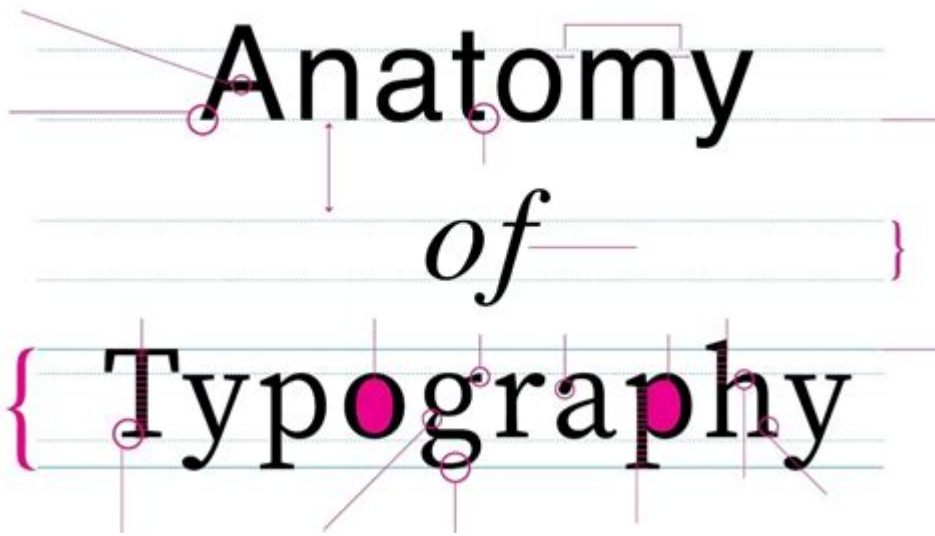


Anatomy Of Typography Worksheet



Anatomy of typography worksheet serves as an essential tool for graphic designers, typographers, and anyone keen on understanding the intricate details of type. Typography is not merely about choosing font styles; it encompasses a vast array of elements that contribute to the overall readability and visual appeal of any text. This article delves into the anatomy of typography, detailing how to create an effective worksheet that can serve as both a learning tool and a reference guide for various typographic elements.

Understanding Typography

Typography is the art and technique of arranging type to make written language legible, readable, and visually appealing. The significance of typography stretches beyond mere aesthetics; it can influence the tone of written content, guide the reader's attention, and enhance the overall communication of a message.

The Importance of Typography

1. Enhances Readability: Good typography ensures that text is easy to read, which is crucial for any written material.
2. Sets the Tone: Different typefaces evoke different feelings and associations. For instance, serif fonts often convey tradition and reliability, while sans-serif fonts might suggest modernity and cleanliness.
3. Creates Hierarchy: Proper use of typography can help establish a visual hierarchy, guiding the reader through the content effortlessly.
4. Brand Identity: Typography plays a vital role in branding, as the typeface can become synonymous with a brand's identity.

Components of Typography

An effective anatomy of typography worksheet should include various components that make up type. Understanding these components is essential for anyone working with text.

1. Typeface

A typeface is a set of characters that share a common design. Each typeface may come in different styles and weights. Some common categories of typefaces include:

- Serif: Features small lines or embellishments at the end of strokes. Examples include Times New Roman and Georgia.
- Sans-Serif: Lacks the small lines, resulting in a cleaner look. Examples include Arial and Helvetica.
- Script: Imitates handwriting and is often used for decorative purposes. Examples include Brush Script and Pacifico.
- Display: Designed for attention-grabbing headlines and often features unique characteristics. Examples include Impact and Lobster.

2. Font Size

Font size refers to the height of the characters in a typeface, typically measured in points (pt). The choice of font size affects readability and the overall impact of the text.

- Body Text: Generally ranges from 10pt to 12pt for comfortable reading.
- Headings: Should be larger than the body text to create a clear hierarchy, often ranging from 14pt to 36pt or more.
- Subheadings: Typically fall between the two, helping to differentiate sections.

3. Line Length

Line length is crucial for readability. The ideal line length for body text is generally between 50-75 characters. Longer lines can lead to reader fatigue, while shorter lines can disrupt the flow of reading.

4. Line Spacing (Leading)

Leading refers to the vertical space between lines of text. Proper leading enhances readability by preventing lines from appearing cramped. A standard guideline is to use 120% to 145% of the font size as leading.

5. Tracking and Kerning

Both tracking and kerning relate to the spacing between characters, but they serve different purposes.

- Tracking: The uniform space between all characters in a word or sentence. Adjusting tracking can affect the overall density of the text.

- Kerning: The adjustment of space between specific character pairs to achieve a visually pleasing result. For example, the letters 'A' and 'V' may need tighter spacing than 'A' and 'L'.

6. Contrast

Contrast refers to the difference between the text and its background. High contrast improves readability, while low contrast can make text difficult to read. Factors influencing contrast include:

- Color: Dark text on a light background or vice versa is typically most readable.
- Weight: Using bold text against a lighter weight can help emphasize specific areas.

Creating an Anatomy of Typography Worksheet

When creating an anatomy of typography worksheet, it is vital to include visual representations of each element alongside explanations. Below is a guide on how to structure your worksheet.

1. Title Section

- Worksheet Title: Clearly state "Anatomy of Typography".
- Purpose: Include a brief description of the worksheet's purpose and how it can be useful.

2. Visual Examples

- Typefaces: Provide samples of various typeface categories, including serif, sans-serif, script, and display.
- Font Sizes: Use a scale to demonstrate different font sizes visually.

- Line Length: Show examples of ideal line lengths with varying text sizes.
- Leading: Provide comparisons of text with different leading values to illustrate readability.
- Tracking and Kerning: Include examples that highlight the difference between well-kerned text and poorly kerned text.

3. Descriptions and Definitions

- Accompany each visual example with a clear, concise definition. This enhances understanding and retention of information.

4. Practical Exercises

To reinforce learning, include practical exercises such as:

- Identify the Typeface: Provide samples and ask users to identify the typeface and its category.
- Adjust the Leading: Present text with various leading options and ask users to choose the most readable version.
- Kerning Practice: Provide poorly kerned text and ask users to adjust the spacing for improved appearance.

5. Summary Section

Conclude the worksheet with a summary of key concepts covered, emphasizing the importance of each typographic element in creating effective text.

Conclusion

The anatomy of typography worksheet is an invaluable resource for anyone looking to deepen their understanding of typography. By breaking down the components of type and providing practical exercises, this worksheet not only educates but also empowers users to apply their knowledge in real-world design scenarios. Mastering typography can significantly enhance the effectiveness of written communication, making it a skill worth honing for designers, marketers, and communicators alike. Whether for personal interest or professional application, a strong grasp of typographic principles can elevate any project to new heights of clarity and appeal.

Frequently Asked Questions

What is the purpose of an anatomy of typography worksheet?

The purpose of an anatomy of typography worksheet is to help designers and students understand the different components of typefaces, such as ascenders, descenders, serifs, and x-heights, improving their typographic skills.

What are the key components typically labeled in an anatomy of typography worksheet?

Key components usually labeled include baseline, cap height, x-height, ascender, descender, stem, counter, bowl, and serif.

How can an anatomy of typography worksheet be useful for graphic designers?

It provides a visual reference that helps graphic designers make informed choices about typeface selection and usage, enhancing the overall design quality.

Are anatomy of typography worksheets suitable for beginners?

Yes, anatomy of typography worksheets are excellent resources for beginners as they offer a clear introduction to typographic terms and concepts.

Can anatomy of typography worksheets be used in educational settings?

Absolutely, they are commonly used in design courses and workshops to teach students about typography fundamentals.

What software can be used to create an anatomy of typography worksheet?

Software like Adobe Illustrator, InDesign, or even free tools like Canva can be used to create custom anatomy of typography worksheets.

What is the difference between serif and sans-serif in typography?

Serif typefaces have small decorative strokes at the ends of their letters, while sans-serif typefaces do not, giving them a cleaner, more modern look.

How do typographic elements affect readability?

Typographic elements, such as font size, spacing, and contrast, significantly impact readability by influencing how easily text can be consumed by the reader.

What role does x-height play in typography?

X-height refers to the height of the lowercase 'x' in a typeface and affects the overall readability and appearance of the font; larger x-heights generally enhance legibility.

Where can I find templates for an anatomy of typography worksheet?

Templates for an anatomy of typography worksheet can be found on design resource websites, educational platforms, or through graphic design software templates.

Find other PDF article:

<https://soc.up.edu.ph/54-tone/pdf?dataid=vKW66-6500&title=skinbetter-science-techno-neck-perfect-ing-cream.pdf>

Anatomy Of Typography Worksheet

1.68 - 52pojie.cn

Apr 24, 2022 · <https://pan ...>

2020 - 52pojie.cn

Mar 24, 2020 · 2020 app v2020.0.73 802M 4.X [hr] 2020 ...

human anatomy atlas - ...

Apr 14, 2020 · human anatomy atlas

52pojie.cn

Jun 2, 2021 · [] []

body Human Anatomy Atlas -

Nov 10, 2018 · visible body Human Anatomy Atlas 3D app

Organon Anatomy -

Jul 25, 2019 · 3D <https://www.52 ...>

Complete Anatomy windows - 52pojie.cn

Apr 2, 2021 · Complete Anatomy windows [] ... » 1 2 / 2

Android - 52pojie.cn

Mar 21, 2016 · PC iPhone

1.68 - 52pojie.cn

Apr 24, 2022 · <https://pan ...>

2020 - 52pojie.cn

Mar 24, 2020 · 2020 app v2020.0.73 802M 4.X [hr] 2020

anatomy of typography worksheet ...

visible body *human anatomy atlas* - 52pojie.cn

Apr 14, 2020 · visible body human anatomy atlas 3D人体解剖学图谱app

visible body *Human Anatomy Atlas* - 52pojie.cn

Jun 2, 2021 · visible body 3D人体解剖学图谱

visible body *Human Anatomy Atlas* - 52pojie.cn

Nov 10, 2018 · visible body Human Anatomy Atlas 3D人体解剖学图谱app

visible body *Organon Anatomy* - 52pojie.cn

Jul 25, 2019 · visible body 3D人体解剖学图谱

[Complete Anatomy windows](#) - 52pojie.cn

Apr 2, 2021 · Complete Anatomy windows 3D人体解剖学图谱 ... 1 2 / 2

Android - visible body - 52pojie.cn

Mar 21, 2016 · visible body PC iPhone

Unlock the secrets of design with our comprehensive anatomy of typography worksheet. Enhance your skills and creativity today! Learn more inside!

[Back to Home](#)