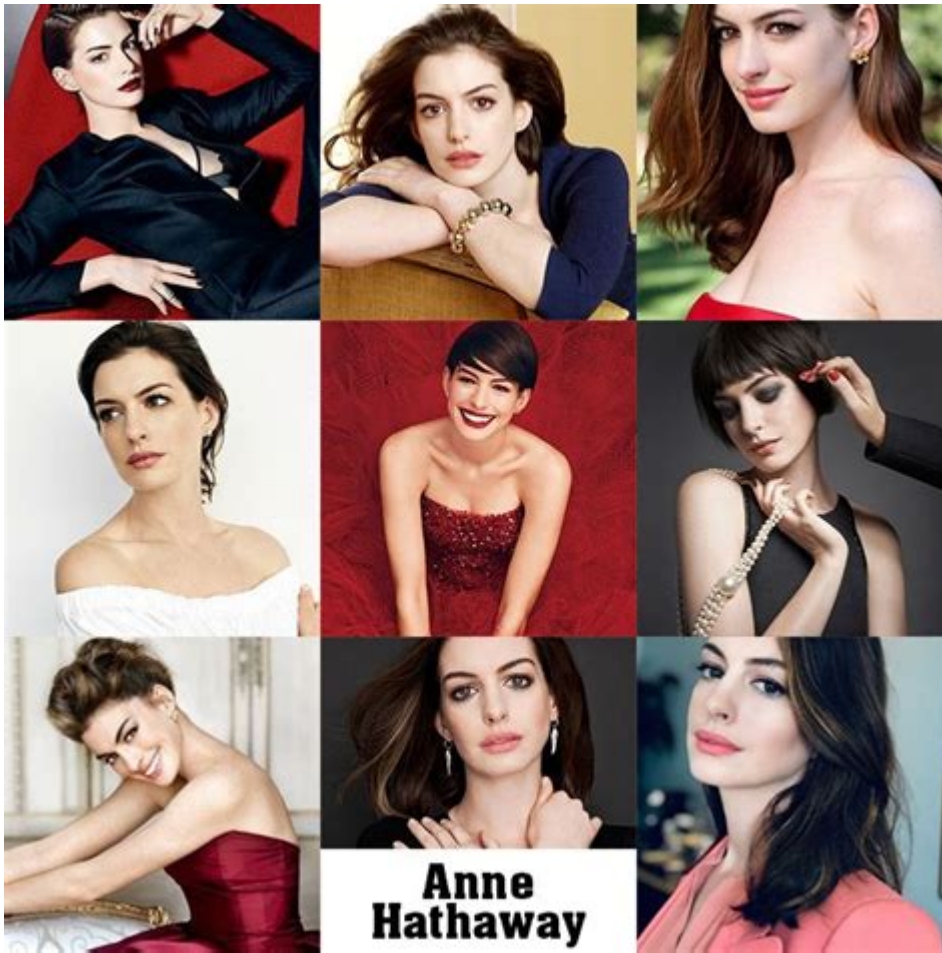


Anne Hathaway Color Analysis



Anne Hathaway color analysis is a fascinating exploration of how colors enhance and complement the features of the celebrated actress. Known for her versatile roles and striking beauty, Hathaway's appearance can provide valuable insights into the power of color in fashion and personal style. This article delves into how color analysis can illuminate her persona, the palettes that suit her best, and how fans can apply these principles to their own wardrobes.

Understanding Color Analysis

Color analysis is a method used to determine which colors best enhance an individual's natural beauty, based on their skin tone, hair color, and eye color. This practice is often categorized into seasonal color palettes: Winter, Spring, Summer, and Autumn. Each season corresponds to specific color characteristics that harmonize with an individual's natural coloring.

The Basics of Color Types

1. Warm vs. Cool Tones:

- Warm tones typically have a yellow, peachy, or golden undertone.
- Cool tones are characterized by blue, pink, or purple undertones.

2. Seasonal Color Palettes:

- Winter: Cool, bold colors like icy blues, emerald greens, and stark whites.
- Summer: Soft, muted colors like lavender, dusty pinks, and soft blues.
- Autumn: Earthy tones such as burnt oranges, deep browns, and olive greens.
- Spring: Bright, warm colors like coral, golden yellows, and light greens.

Anne Hathaway's Natural Features

To perform a Anne Hathaway color analysis, it's essential to consider her distinct features:

- Skin Tone: Hathaway has a fair complexion that often appears neutral, with a slight pink undertone.
- Hair Color: She is known for her dark brown hair, which can sometimes appear almost black, especially when styled in a sleek manner.
- Eye Color: Her large, expressive eyes are a deep brown, which adds warmth to her overall appearance.

Determining Her Color Season

Based on her features, many color analysts categorize Anne Hathaway as a Winter. This classification is primarily due to her cool undertones and the darker shades of her hair. Here's a breakdown of her color season:

- Skin Tone: The cool, fair tone aligns with Winter characteristics.
- Hair: Dark, rich hues are typical of the Winter palette.
- Eyes: Her deep brown eyes provide a striking contrast, further supporting the Winter classification.

Colors That Complement Anne Hathaway

Given her analysis as a Winter, specific colors will accentuate her beauty and enhance her overall look.

Best Colors for Anne Hathaway

1. Bold Jewel Tones:

- Emerald green
- Sapphire blue
- Ruby red

2. Icy Pastels:

- Icy pink
- Light lavender
- Soft mint green

3. True Neutrals:

- Crisp white
- Charcoal gray
- Cool black

4. Vivid Colors:

- Fuchsia
- Electric blue
- Bright teal

These colors not only highlight her natural features but also resonate with her sophisticated and elegant style choices.

Colors to Avoid

Just as some colors enhance Anne Hathaway's appearance, others may detract from it. For a Winter like Hathaway, it's advisable to avoid:

- Earthy Tones: Such as mustard yellow, olive green, and rust.
- Pastel Colors: Soft, muted shades may wash her out.
- Warm Colors: Colors with orange or yellow undertones can clash with her cool skin tone.

Anne Hathaway's Style Evolution

Over the years, Anne Hathaway has transitioned through various fashion phases, showcasing her understanding of color and style.

Red Carpet Appearances

Hathaway's red carpet looks often feature bold colors that align with her color analysis:

- Memorable Outfits:
- 2013 Oscars: A stunning, structured red gown by Prada that accentuated her figure and complemented her Winter palette.
- Les Misérables Premiere: A dramatic black gown that showcased her sophisticated elegance, proving that neutral colors can also shine when styled correctly.

Casual Wear

In her casual attire, Hathaway embraces softer versions of her best colors:

- Incorporating icy pastels and jewel tones into her everyday wardrobe.
- Favoring classic silhouettes that enhance her figure while allowing her to play with color.

Applying Color Analysis to Your Wardrobe

Fans of Anne Hathaway can take inspiration from her style and color analysis to curate their wardrobes.

Steps for Personal Color Analysis

1. Identify Your Undertone:
 - Determine if you have warm or cool undertones by observing the veins on your wrist (blue for cool, green for warm) or how your skin reacts to different colors.
2. Determine Your Season:
 - Using the characteristics outlined earlier, classify yourself into one of the four seasonal palettes.
3. Curate Your Color Palette:
 - Create a list of colors that suit your season. Start incorporating these colors into your wardrobe.

Building a Capsule Wardrobe

A capsule wardrobe is an excellent way to streamline your style. Here's how to build one based on your color analysis:

- Choose Your Base Colors: Select 2-3 neutral colors that work for your season.
- Add Accent Colors: Choose 3-5 colors that will add vibrancy to your

outfits.

- **Select Versatile Pieces:** Invest in classic items like a tailored blazer, a little black dress, and well-fitted jeans.

Conclusion

Anne Hathaway color analysis provides a roadmap for understanding how color can enhance beauty and personal style. By identifying the colors that suit her best, fans of the actress can draw parallels to their own fashion choices. Whether you're inspired by Hathaway's glamorous red carpet looks or her chic casual outfits, understanding the principles of color analysis can lead to a more confident and stylish you. Embrace the colors that resonate with your natural features, and you too can channel the elegance and sophistication that Anne Hathaway exudes.

Frequently Asked Questions

What is color analysis in relation to Anne Hathaway?

Color analysis refers to the study of how different colors complement an individual's natural features, such as skin tone, eye color, and hair color. In relation to Anne Hathaway, it involves assessing which colors enhance her appearance and suit her best.

What seasonal color palette is often associated with Anne Hathaway?

Anne Hathaway is commonly associated with the Winter color palette, which includes bold, vibrant colors like jewel tones, icy shades, and high contrast combinations.

How can fans apply Anne Hathaway's color analysis to their own wardrobe?

Fans can analyze their own features to determine their seasonal color palette and select clothing pieces in colors that enhance their natural appearance, similar to how Hathaway often wears colors that suit her.

What are some signature colors that Anne Hathaway wears frequently?

Anne Hathaway frequently wears deep blues, rich purples, and classic blacks and whites, which align with her Winter color palette.

Are there any specific fashion choices of Anne Hathaway that reflect her color analysis?

Yes, Anne Hathaway often opts for striking gowns in bold colors during red carpet events, showcasing her color analysis by selecting shades that highlight her features.

How does Anne Hathaway's hair color influence her color analysis?

Anne Hathaway's dark brown hair enhances her suitability for deep and rich colors, further confirming her association with the Winter palette, which thrives on contrast.

Can color analysis change over time, as seen with Anne Hathaway?

Yes, color analysis can evolve with changes in hair color, skin tone, or personal style. Anne Hathaway has experimented with various looks, which may influence her color analysis.

What role does lighting play in color analysis for someone like Anne Hathaway?

Lighting can significantly affect how colors appear on an individual. For Anne Hathaway, different lighting conditions can enhance or diminish the vibrancy of colors chosen for her outfits.

Find other PDF article:

<https://soc.up.edu.ph/40-trend/files?dataid=mgt66-8483&title=mechanistic-empirical-pavement-design-guide.pdf>

Anne Hathaway Color Analysis

anne|annie| |

"Anne" | "Annie" | "Anne" | "Annie" |

Anne|Annie -

Anne|Annie | Anne 1 [æ] 2 n. 3 Anne Frank ; ; Anne Boleyn ...

Anne -

Anne 1 [æ] 2 n. 3 Anne Frank ; ; Anne Boleyn ;

· ; · ; Anne Fletcher · ...

Anne -

Anne...AnnAnnie... ~ ...

AnneAnna_

Aug 12, 2010 · AnneAnna,Anne n. 1. 2. ...

NetflixAnne -

NetflixAnne... ..

1800 -

1800CEO996 19... ..

-

(first name), (last name). first namelast name ...

ANNE PRO2? -

60%anne Pro2 ...

“ ” -

“ ”1 "Bonjour" “ ”Bonjour "bon," "

anneannie_

"Anne" "Annie" "Anne" "Annie" ...

AnneAnnie -

AnneAnnie Anne 1 [æn] 2n. 3 Anne Frank · ; · ...

Anne -

Anne 1 [æn] 2n. 3 Anne Frank · ; · ; Anne Boleyn · ; · ...

Anne -

Anne...AnnAnnie... ..

AnneAnna_

Aug 12, 2010 · AnneAnna,Anne n. 1. ...

Discover how Anne Hathaway's color analysis can inspire your wardrobe choices! Uncover the

shades that enhance her beauty and elevate your style. Learn more!

[Back to Home](#)