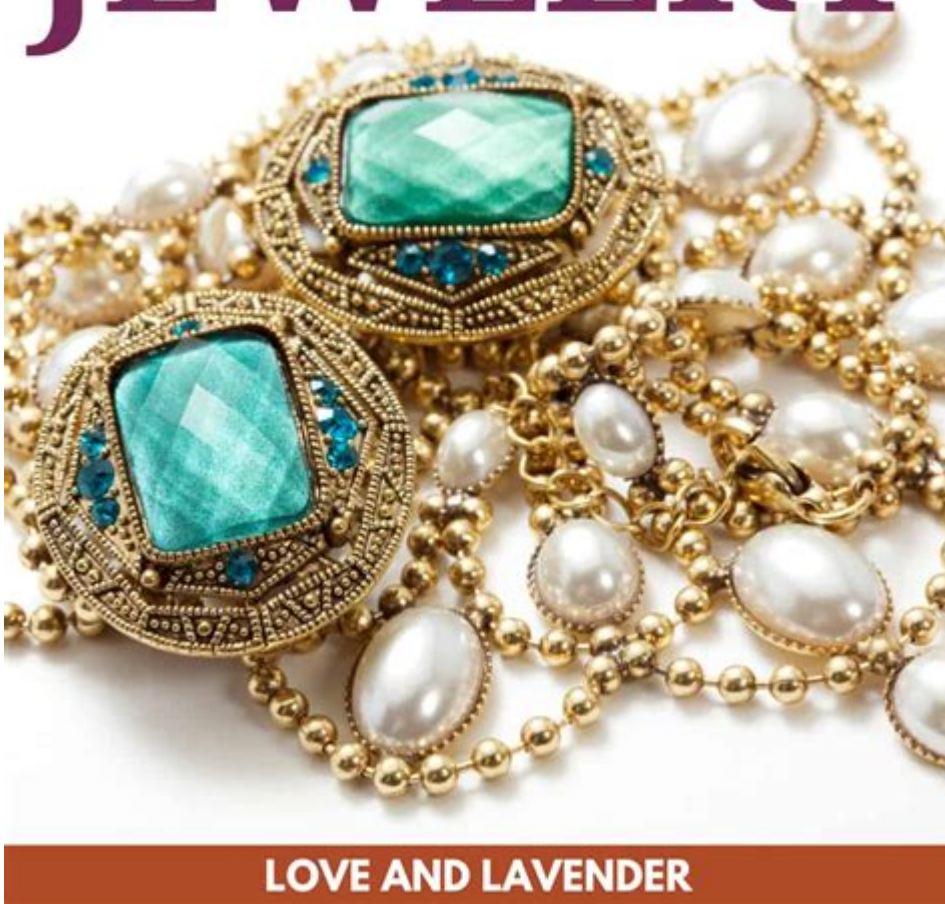


Antique Jewelry Identification Guide

SIMPLE TIPS FOR HOW TO IDENTIFY VINTAGE JEWELRY



LOVE AND LAVENDER

Antique jewelry identification guide is an essential tool for collectors, enthusiasts, and anyone interested in understanding the intricate world of vintage adornments. With the increasing popularity of antique jewelry, recognizing and valuing these treasures has become a vital skill. This guide will provide you with a comprehensive understanding of how to identify various styles, materials, and markings, helping you appreciate the artistry and historical significance of antique jewelry.

The Importance of Antique Jewelry Identification

Antique jewelry identification serves multiple purposes:

- **Value Assessment:** Identifying the age and origin can significantly affect the value of the piece.
- **Historical Context:** Understanding the time period and style provides insight into the cultural and social trends of the era.
- **Authenticity Verification:** Proper identification helps in determining whether a piece is genuine or a reproduction.
- **Preservation and Care:** Knowing the materials and construction allows for appropriate maintenance and restoration.

Key Factors in Identifying Antique Jewelry

When it comes to identifying antique jewelry, several factors come into play. Here are the primary elements to consider:

1. Age and Time Period

Antique jewelry is typically defined as any piece that is at least 100 years old. Understanding the different time periods can help you identify the style and craftsmanship:

- **Georgian (1714-1837):** Characterized by intricate handwork, natural motifs, and the use of materials like gold and silver.
- **Victorian (1837-1901):** Known for romantic and sentimental designs, including the use of gemstones like garnets, opals, and pearls.
- **Edwardian (1901-1910):** Features delicate, lace-like designs often made with platinum and diamonds.
- **Art Nouveau (1890-1910):** Recognized for flowing, organic shapes and the incorporation of enamel and glass.
- **Art Deco (1920-1939):** Defined by geometric shapes, bold colors, and the use of materials like platinum and jade.

2. Materials Used

The materials used in antique jewelry can provide significant clues about its age and origin:

- **Gold:** Look for karat marks (e.g., 10K, 14K, 18K) and different gold colors (yellow, white, rose).
- **Silver:** Sterling silver is usually marked with ".925." Pay attention to the tarnishing, which is common in older pieces.
- **Gemstones:** Natural stones were commonly used, while synthetic stones became popular in the 20th century. Familiarize yourself with the gems of each era.
- **Enamel:** Often used in Art Nouveau and Victorian pieces, it can show signs of wear or chipping that indicate age.

3. Design and Craftsmanship

The design elements and craftsmanship can reveal much about the era and the jeweler:

- **Technique:** Handcrafted pieces will show slight imperfections, while machine-made items will have a more uniform appearance.
- **Style:** Look for motifs and settings typical of certain periods, such as floral designs in Victorian jewelry or angular shapes in Art Deco pieces.

4. Hallmarks and Markings

Hallmarks are essential for identifying the authenticity and origin of antique jewelry:

- **Gold Hallmarks:** Indicate purity (e.g., 14K) and sometimes the country of origin.

- **Silver Hallmarks:** Similar to gold, these marks indicate quality and origin.
- **Designer Marks:** Renowned designers (e.g., Cartier, Tiffany & Co.) often have specific markings that can authenticate a piece.

Steps for Identifying Antique Jewelry

Identifying antique jewelry can be a meticulous process. Here's a step-by-step guide to help you through it:

1. **Research the Piece:** Gather information about the jewelry's history, including any known details about its previous owners or the time period it belongs to.
2. **Check for Hallmarks:** Examine the piece carefully for any markings or signatures. Use a jeweler's loupe for a closer inspection.
3. **Analyze Materials:** Test the materials using appropriate methods (e.g., acid tests for gold) to confirm their authenticity.
4. **Compare Designs:** Look at similar pieces from the same era in books or online resources. Pay attention to details like clasp styles and stone settings.
5. **Seek Professional Help:** If you're uncertain, consider consulting an appraiser or a reputable antique jewelry dealer.

Resources for Further Learning

To deepen your knowledge of antique jewelry identification, explore the following resources:

- **Books:** Consider reading books focused on antique jewelry, which often cover specific periods and styles.
- **Online Forums:** Join antique jewelry forums and online communities to share knowledge and experiences with other enthusiasts.
- **Workshops:** Attend workshops or classes that focus on antique jewelry appraisal and identification.

- **Museums:** Visit museums with jewelry exhibits to see well-preserved examples from various eras.

Conclusion

This **antique jewelry identification guide** serves as a valuable resource for anyone interested in the captivating world of antique adornments. Recognizing the age, materials, design, and markings of these pieces enriches your appreciation for their historical significance and artistic value. Whether you're a seasoned collector or just starting your journey, the skills you acquire through this guide will help you navigate the enchanting realm of antique jewelry with confidence.

Frequently Asked Questions

What are the key characteristics to look for when identifying antique jewelry?

Key characteristics include the type of metal used, the style of craftsmanship, gemstones' cut and settings, and any maker's marks or hallmarks present on the piece.

How can I determine the age of my antique jewelry?

You can determine the age by examining design styles, materials used, and any identifying marks or stamps, as well as consulting historical jewelry guides or experts.

What is the significance of hallmarks in antique jewelry?

Hallmarks provide information about the metal content, the country of origin, and sometimes the maker, helping to authenticate and date the piece.

Are there specific eras of antique jewelry that are more valuable?

Yes, periods such as the Victorian, Edwardian, Art Nouveau, and Art Deco are often more sought after, with styles and materials affecting their value.

How can I tell if my antique jewelry is a

reproduction?

Look for signs like modern materials, lack of wear, and absence of hallmarks or maker's marks that were common in the era of the original pieces.

What role do gemstones play in identifying antique jewelry?

Gemstones can indicate the era and quality; for instance, certain cuts and types of gemstones were popular in specific time periods, which helps in identification.

What resources are available for identifying antique jewelry?

Resources include antique jewelry books, online databases, auction house catalogs, and consulting with professional appraisers or antique dealers.

How can I care for and preserve my antique jewelry?

Store pieces in a cool, dry place, avoid exposure to harsh chemicals, and clean gently with appropriate methods to preserve their condition.

What common mistakes should I avoid when identifying antique jewelry?

Avoid assuming pieces are antique based solely on appearance, neglecting to check for hallmarks, or relying only on online images without expert validation.

Is there a difference between vintage and antique jewelry?

Yes, antique jewelry is typically defined as being at least 100 years old, while vintage jewelry is usually classified as being 20 to 99 years old.

Find other PDF article:

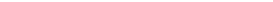
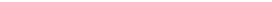
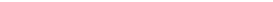
<https://soc.up.edu.ph/43-block/files?docid=xhG48-7215&title=next-step-mcat-exams.pdf>

Antique Jewelry Identification Guide

Antique □ ancient □□□□□□ - □□

Antique□□□□□□antique□□□□□□□□□□antiquus□□□□ante□□□□□□□□□□□□□□□□“Having existed since olden ...

□□□□□□ - □□□□

Aug 5, 2024 ·  RGB  1. Champagne Gold#F7E7CE (RGB) 247,231,206
2. Light ...

: -

Oct 21, 2024 ·  Antique brass color  ...

carved antique...

Oct 28, 2023 · The rays of the morning sun begin to shine through antique carved wooden windows, casting a glow of gold ...

□□□□□□ antique nickel □□□□□ - □□□□□

Jul 26, 2011 · 10 antique nickel 10

Antique □ **ancient** □□□□□□ - □□

Antique antique antiquus ante “Having existed since olden times; of a good old age, venerable” ...

□□□□□□ - □□□□

Aug 5, 2024 · 1. Champagne Gold (RGB) 247,231,206
2. Light Champagne #F5D3B4 (RGB) ...

: [] [] [] [] [] [] [] [] [] [] - [] [] [] []

Oct 21, 2024 · Antique brass color “Antique”
“brass” ...

carved antique ...

Oct 28, 2023 · The rays of the morning sun begin to shine through antique carved wooden windows, casting a glow of gold over the landscape. 〰〰〰〰〰〰〰〰 〰〰〰〰〰〰 ...

□□□□□□ antique nickel □□□□□ - □□□□

Jul 26, 2011 · antique nickel

□□□□□□□□ () - □□□□

黑鎳 (黑鎳) 電鍍
 黑鎳 (黑鎳) Black zinc 藍鎳 Blue zinc 藍白鎳 Blue white zinc 鎳 Nickel 黑鎳 Black nickel 電鍍 electroplating
 暗鎳 dull nickle 鎳 nickel 暗銀 dark silver 古銅 antique ...

ant. silver

ant. silver antique white Antique white / #faebd7 hex
colorn a RGB color space, hex #faebd7 (also known as ...

□□□□□□□□ - □□□□

小麦 青铜; 青铜色的; 古铜色 (人) 皮肤
 ...

□□□□□□□□□□ - □□

drop table 1 Rileyson drop table
2 ...

antique gold 古銅色 - 古銅色

Dec 14, 2016 · antique gold ██████████ ██████████ ██████████ PVC ██████████ ██████████

"Unlock the secrets of your vintage treasures with our comprehensive antique jewelry identification guide. Discover how to value and date your pieces today!"

[Back to Home](#)