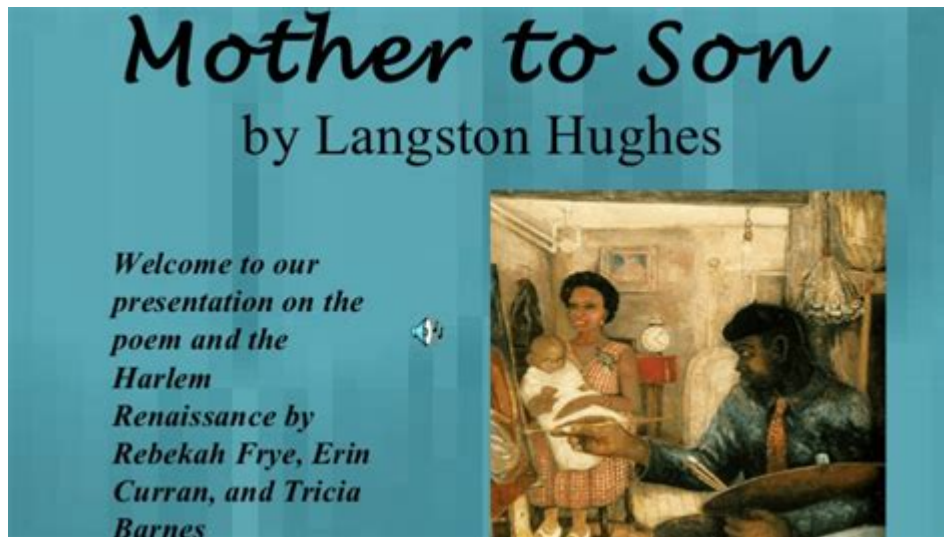


# Analysis Of Mother To Son



**Analysis of "Mother to Son"** is a poignant exploration of the themes of struggle, perseverance, and the unconditional love of a mother. Written by the African American poet Langston Hughes, the poem serves as a metaphorical dialogue between a mother and her son, capturing the essence of the African American experience during a time of racial and social challenges. Through vivid imagery and powerful symbolism, Hughes conveys the message that life is fraught with difficulties, but it is essential to rise above them.

## Background of Langston Hughes

Langston Hughes was a central figure in the Harlem Renaissance, a cultural movement in the 1920s that celebrated African American culture, art, and literature. His work often addressed social issues, particularly those related to race and identity. Hughes's poetry is characterized by its rhythm, use of colloquial language, and deep emotional resonance. "Mother to Son," published in 1922, exemplifies these traits and serves as a powerful testament to the resilience of the human spirit.

## Overview of the Poem

"Mother to Son" is structured as a dramatic monologue, in which a mother speaks directly to her son. The poem begins with the mother asserting that her life has not been a crystal stair, a metaphor for an easy, prosperous life. Instead, she describes her journey as one filled with obstacles, represented by the stairs that are tattered, worn, and full of challenges.

## Key Themes

The poem encapsulates several key themes that resonate deeply within the African American

community and beyond:

- **Struggle and Perseverance:** The mother's life is a testament to the struggles faced by many, emphasizing the importance of perseverance in the face of adversity.
- **Maternal Love:** The mother's voice is filled with love and encouragement, showcasing the unwavering support that mothers provide to their children.
- **Resilience:** The poem emphasizes the idea that despite life's challenges, one must continue to climb and strive for a better future.
- **Hope:** Through her struggles, the mother instills a sense of hope in her son, urging him to continue fighting for his dreams.

## Imagery and Symbolism

One of the most striking aspects of "Mother to Son" is Hughes's use of vivid imagery and symbolism. The metaphor of the staircase serves multiple purposes in the poem:

### The Staircase as a Metaphor

The staircase represents the journey of life, with its ups and downs. The mother's description of the staircase as "tattered" and "bare" symbolizes the hardships she has faced. The imagery evokes a sense of weariness and struggle, yet it also reflects the tenacity required to keep moving forward. The mother's insistence that her son should not turn back or sit down is a powerful call to action, urging him to face his own challenges head-on.

### Use of Colloquial Language

Hughes employs colloquial language to create an authentic voice for the mother. The informal diction, including phrases like "ain't" and "don't you turn back," adds a sense of realism and relatability to the poem. This choice of language not only enhances the emotional impact of the poem but also connects with the spoken word traditions within African American culture.

### Structure and Form

"Mother to Son" is written in free verse, which allows Hughes to maintain a conversational tone that mirrors natural speech. The poem consists of several stanzas of varying lengths, giving it a rhythmic quality that draws the reader in. This structure reinforces the themes of the poem, as the lack of a rigid form symbolizes the unpredictable nature of life.

## Rhyme and Rhythm

Although the poem does not adhere to a strict rhyme scheme, it features rhythmic elements that contribute to its lyrical quality. The repetition of phrases like "Life for me ain't been no crystal stair" creates a musicality that emphasizes the mother's message. The rhythm of the poem evokes the cadence of spoken language, making it feel personal and immediate.

## Character Analysis

The central character of the poem is the mother, who embodies strength, resilience, and unconditional love. Her experiences serve as a microcosm of the broader struggles faced by many individuals, particularly within marginalized communities.

## The Mother's Perspective

The mother's perspective is one of wisdom gained through hardship. Her life experiences have shaped her understanding of struggle, and she uses this knowledge to guide her son. She acknowledges the difficulties of life but also emphasizes the importance of perseverance. Her character is not only a source of encouragement but also a symbol of hope for future generations.

## The Son's Role

While the son is not given a voice in the poem, his presence is felt throughout. The mother's address to him suggests a deep concern for his future and well-being. By sharing her own experiences, she hopes to instill in him the values of resilience and determination. The son represents the younger generation, who must navigate their own challenges in a world that may still be fraught with obstacles.

## Conclusion

In "Mother to Son," Langston Hughes crafts a powerful narrative that speaks to the universal human experience of struggle and resilience. Through the mother's voice, the poem conveys a message of hope and perseverance in the face of adversity. The vivid imagery, use of colloquial language, and free verse structure all contribute to the emotional depth of the poem.

As readers reflect on the themes presented in "Mother to Son," they are reminded of the importance of resilience and the strength that can be found in familial love. The poem serves as an enduring reminder that, despite the challenges life may present, the journey is worth the effort, and one must continue to climb toward their dreams. Hughes's work remains relevant today, as it resonates with individuals facing their own struggles, encouraging them to persevere and rise above.

# Frequently Asked Questions

## What is the main theme of 'Mother to Son' by Langston Hughes?

The main theme of 'Mother to Son' is perseverance and resilience in the face of life's challenges. The mother uses the metaphor of a staircase to illustrate the struggles and hardships she has faced, emphasizing the importance of continuing to climb despite obstacles.

## How does Langston Hughes use symbolism in 'Mother to Son'?

Hughes employs the staircase as a powerful symbol representing life's journey. The mother's description of the staircase as 'not a crystal stair' suggests that life is filled with difficulties, yet she encourages her son to keep moving forward regardless of the struggles.

## What literary devices are prominent in 'Mother to Son'?

Prominent literary devices in 'Mother to Son' include imagery, metaphor, and colloquial language. The use of vivid imagery helps to convey the emotional weight of the mother's experiences, while the metaphor of the staircase serves as a central theme throughout the poem.

## What is the speaker's attitude toward life's challenges in 'Mother to Son'?

The speaker's attitude is one of determination and encouragement. The mother acknowledges the difficulties she has faced but remains resolute and optimistic, urging her son to embrace perseverance and not give up despite the hardships.

## How does the poem 'Mother to Son' reflect the historical context of African American experiences?

The poem reflects the historical context of African American experiences by highlighting the struggles and systemic barriers faced by the community. The mother's advice to her son serves as a testament to the resilience and strength necessary to overcome societal obstacles, capturing the essence of the African American fight for dignity and equality.

## What is the significance of the mother's direct address to her son in the poem?

The direct address creates an intimate and personal tone, emphasizing the maternal bond and the transfer of wisdom from one generation to the next. It illustrates the mother's desire to instill strength and resilience in her son, making the message both personal and universal.

Find other PDF article:

<https://soc.up.edu.ph/24-mark/Book?trackid=Mlb95-4698&title=fundations-level-2-unit-6-answer-key.pdf>

## Analysis Of Mother To Son

analysis analyses □ □ □ □ □ ? - □ □ □ □

```
analysis analyses? analysis analyses
...

```

*analysis* □ *analyses* □□□□□? - □□

With all the analysis considered, analysis analyses

analyse analyze analysis□□□□ □□□□

Dec 14, 2022 · 3.analysis

**pooled analysis** **meta analysis** **?**

May 17, 2024 · pooled analysis meta analysis? Pooled analysis Meta analysis  
...

## analysis□□□□□□□□? - □□□□

analysis (noun) analysis (noun) analyses (noun) ['ænəlaɪz] ['ænəlaɪz] v. analyses (verb) ...

$$COA \rightarrow COA \rightarrow \dots$$

Aug 11, 2024 · COA Certificate of Analysis ...

analysis □□□□□□□□ □□□□

analysis[ə'neɪləsɪs] analyses[ə'neɪləsɪz] n. 分析  
Her criteria defy analysis. ...

**analyse analyze analysis** □□□□ □□□□

analysis /ə'neɪləsɪs/ , analyses /ə'neɪləsɪ:z/. analyse /'æneɪlaɪz/, analyses /'æneɪlaɪzəz/. ( ) analyze □ analyzes □ 2 ...

"analysis on" ≠ "analysis of" □□□□□□ - □□□□

1 The analysis of a problem is the starting point for its solution.

2 Jacobsen based his conclusion on an analysis of the decay of samarium ...

TPAMI -

Dec 15, 2024 · TPAMI · IEEE Transactions on Pattern Analysis and Machine Intelligence ...

*analysis*  $\square$  *analyses*  $\square\square\square\square$ ? -  $\square\square\square\square$

```
analysis[]analyses[]?[]analysis[]analyses[]
[] ...
```

analysis □ analyses □□□□□? - □□

With all the analysis considered, analysis analyses

**analyse analyze analysis**□□□□ □□□□

Dec 14, 2022 · 3.analysis

**pooled analysis** = **meta analysis** = ?

May 17, 2024 · pooled analysis meta analysis? Pooled analysis Meta analysis  
...

## analysis□□□□□□□? - □□□□

analysis [ˈæ.nə.laɪz] analysis (analyses [ˈæ.nə.laɪz] v. analyses [ˈæ.nə.laɪz] ...

COA COA

Aug 11, 2024 · COA Certificate of Analysis

analysis □□□□□□□□ □□□□

analysis[ənəˈlɪsɪs] analyses[əˈnæləsiːz] [əˈnæləsɪz] n. 分析  
Her criteria defy analysis. ...

analyse analyze analysis□□□□ □□□□

analysis /ə'neɪləsɪs/ , analyses /ə'neɪləsɪ:z/. analyse /'æneɪlaɪz/, analyses /'æneɪlaɪzəz/. ( ) analyze , analyzes , 2 ...

"analysis on" □ "analysis of" □ □ □ □ □ □ - □ □ □ □

1 The analysis of a problem is the starting point for its solution.

2 Jacobsen based his conclusion on an analysis of the decay of samarium ...

TPAMI -

Dec 15, 2024 · TPAMI IEEE Transactions on Pattern Analysis and Machine Intelligence ...

Explore our in-depth analysis of "Mother to Son"

[Back to Home](#)