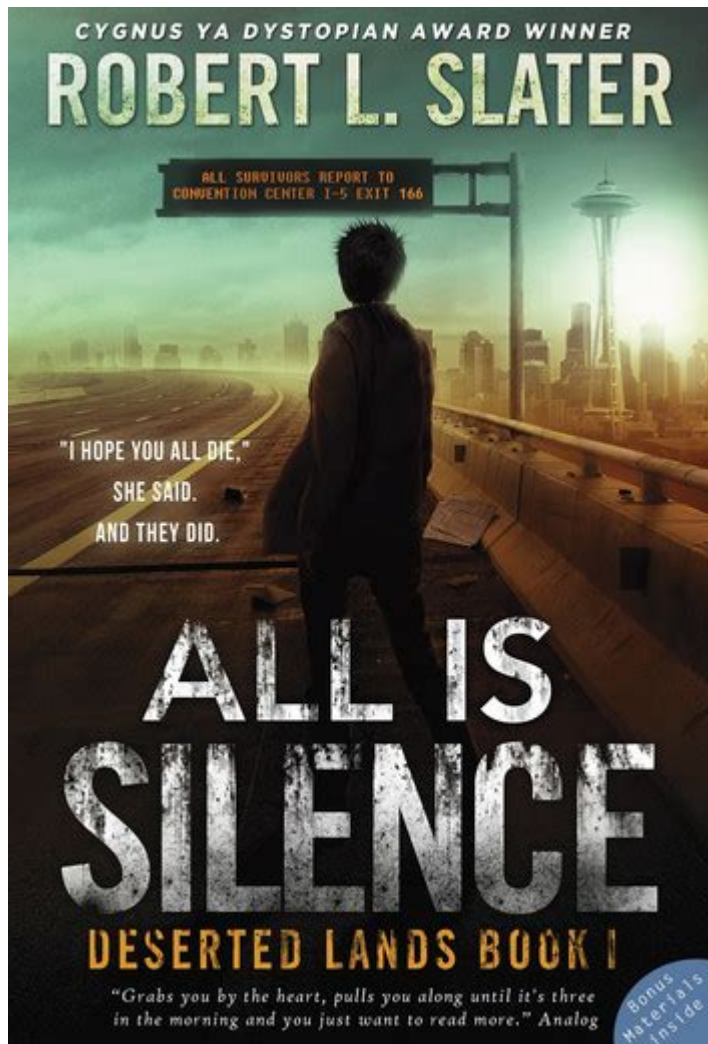


All Is Silence Robert L Slater



All Is Silence Robert L. Slater is a powerful and evocative work that delves into themes of loss, isolation, and the profound impact of silence in human experiences. Robert L. Slater, a writer known for his poignant storytelling and deep psychological insights, crafts a narrative that resonates with readers on multiple levels. This article explores the key themes, character development, and literary techniques employed in "All Is Silence," providing a comprehensive overview of the work and its significance in contemporary literature.

Overview of the Work

Published in the early 21st century, "All Is Silence" captures the challenges of modern existence through the lens of its characters' internal struggles. The title itself suggests a paradox; silence can signify both peace and turmoil, isolation and connection. Slater artfully navigates this duality, creating a rich tapestry of emotions that invites readers to reflect on their own experiences with silence.

Key Themes

In "All Is Silence," several themes emerge that are central to the narrative:

1. The Nature of Silence

Silence is a multifaceted theme in the book. It is portrayed as both a refuge and a source of despair. Characters often retreat into silence to escape the chaos of their lives, but this silence can also lead to loneliness and miscommunication. Slater uses silence to explore:

- Emotional Isolation: Characters may find themselves surrounded by others yet feel profoundly alone. This aspect of silence emphasizes the difficulty of expressing true emotions and the barriers that exist in human relationships.
- Communication Breakdown: The inability or unwillingness to communicate often leads to misunderstandings. Slater illustrates how silence can create chasms between loved ones, highlighting the importance of dialogue in maintaining connections.

2. Loss and Grief

Grief is another prevailing theme in "All Is Silence." The characters grapple with the loss of loved ones, dreams, and even their sense of self. Slater poignantly depicts the stages of grief and how silence permeates each stage:

- Denial: Characters may initially avoid confronting their feelings, choosing silence as a coping mechanism.
- Anger and Bargaining: As characters wrestle with their emotions, they often find themselves in a state of internal conflict, where silence becomes a form of resistance against their pain.
- Acceptance: Ultimately, the journey through grief leads characters to a place of acceptance, where silence transforms from a burden into a form of peace.

3. The Search for Identity

The quest for identity is intricately woven into the narrative. Characters often struggle with their sense of self amidst external pressures and expectations. Slater examines how silence can play a role in this search:

- Self-Reflection: In moments of solitude, characters confront their innermost thoughts, leading to profound revelations about their identities.
- Societal Expectations: The pressure to conform can silence individual voices. Slater explores how characters navigate these expectations while striving to assert their identities.

Character Development

The characters in "All Is Silence" are richly developed, each representing different facets of the human experience. Slater's attention to detail allows readers to connect with these characters on an emotional level.

1. Protagonist's Journey

The protagonist undergoes a transformative journey throughout the narrative. Initially marked by feelings of despair and isolation, the character's evolution is a central focus. Key elements of this journey include:

- Initial Isolation: The protagonist's struggle with silence is evident in their relationships and daily life, creating a sense of detachment from the world.
- Moments of Connection: As the story progresses, the protagonist encounters individuals who challenge their perceptions of silence. These connections serve as catalysts for growth and introspection.
- Culmination of Growth: Ultimately, the protagonist learns to embrace both silence and communication, finding a balance that allows for authentic relationships.

2. Supporting Characters

Supporting characters enrich the narrative by providing diverse perspectives on silence, loss, and identity. Each character's storyline intertwines with the protagonist's journey, creating a complex web of relationships. Notable supporting characters include:

- The Wise Mentor: This character offers guidance and wisdom, helping the protagonist navigate their emotional landscape.
- The Antagonistic Figure: A character who embodies societal pressures, challenging the protagonist's journey towards self-discovery.
- The Love Interest: A character who represents hope and healing, providing a counterpoint to the

protagonist's struggles with silence and isolation.

Literary Techniques

Robert L. Slater employs various literary techniques to enhance the emotional depth of "All Is Silence." These techniques contribute to the overall impact of the narrative:

1. Symbolism

Symbolism plays a crucial role in the novel. Silence itself is a recurring symbol that reflects the characters' emotional states. Additionally, Slater uses other symbols, such as:

- Nature: Natural elements often mirror the characters' internal struggles, with stormy weather representing turmoil and calm landscapes symbolizing peace.
- Objects: Everyday objects can take on symbolic meanings, representing lost connections or memories tied to grief.

2. Imagery

Slater's use of vivid imagery immerses readers in the emotional landscape of the characters. Descriptive passages evoke sensations and emotions, allowing readers to experience the weight of silence alongside the characters. For example:

- Sensory Details: The author often incorporates sensory language to illustrate moments of silence, such as the stillness of a room or the muffled sounds of the outside world.
- Contrasting Imagery: By juxtaposing moments of silence with bursts of noise or chaos, Slater emphasizes the tension between isolation and connection.

3. Stream of Consciousness

Slater's narrative style often employs a stream of consciousness technique, allowing readers to delve into the characters' thoughts and emotions. This technique enhances the theme of silence, as it captures the internal monologues that often go unspoken.

- Inner Conflicts: Characters' struggles with their identities and emotions unfold through their thoughts, providing a raw and honest portrayal of their experiences.
- Temporal Shifts: The fluidity of time in the characters' thoughts reflects the non-linear nature of grief and self-discovery.

Conclusion

In "All Is Silence," Robert L. Slater presents a profound exploration of silence and its implications on human relationships, identity, and grief. Through rich character development and masterful literary techniques, Slater captures the complexities of the human experience. The work encourages readers to reflect on their own encounters with silence and the ways in which it shapes their lives.

Ultimately, "All Is Silence" serves as a poignant reminder of the power of connection—both with oneself and with others. Slater's narrative invites us to confront the silence in our own lives, urging us to find meaning and understanding in the spaces between words. As readers close the final pages, they are left with a sense of hope, recognizing that even in silence, there can be a profound understanding of the human condition.

Frequently Asked Questions

What is the central theme of 'All is Silence' by Robert L. Slater?

The central theme of 'All is Silence' revolves around the complexities of communication and the often unspoken emotions that exist between individuals, highlighting how silence can speak volumes in relationships.

Who are the main characters in 'All is Silence'?

The main characters in 'All is Silence' include a diverse cast that represents different perspectives on silence and communication, with a focus on the protagonist's journey through personal and interpersonal challenges.

What literary style does Robert L. Slater employ in 'All is Silence'?

Robert L. Slater employs a reflective and introspective literary style in 'All is Silence', using rich imagery and metaphor to explore the nuances of silence and its impact on human connections.

How does 'All is Silence' address the concept of mental health?

In 'All is Silence', Slater addresses mental health by illustrating how silence can be both a coping mechanism and a barrier, as characters navigate their internal struggles and the stigma surrounding mental health issues.

What critical reception has 'All is Silence' received since its publication?

Since its publication, 'All is Silence' has received positive critical reception for its poignant exploration of silence and communication, with many reviewers praising Slater's ability to evoke deep emotional responses through his writing.

Find other PDF article:

<https://soc.up.edu.ph/67-blur/pdf?trackid=uOp54-5777&title=world-history-sat-subject-test.pdf>

All Is Silence Robert L Slater

XXXXXXXX@XXXX - XX
XXXXXXXXXXXXXXXXXXXX@XXXXXX

XXXXXXXXNature CommunicationsXXXXXXXXOnlineXXXX ...

all reviewers assigned 20th february editor assigned 7th january manuscript submitted 6th january
XXXXXXXXXXXXXXXX 2nd june review complete 29th may all reviewers assigned 14th may editor assigned
12th may manuscript submitted 12th may XXXXXXXXXXXX 4th july review complete 15th june all
reviewers ...

XXXXipconfigXXXXXXXXXXXXIPXX - XXXX
XXXXipconfigXXXXXXXXXXXXIPXXXXipconfigXXXXIPXXXXXXXXXXXXXXXXXXXX"XXXX"XXXXXXXXXXXXwin+RXXXX"cmd"XXXX"X
X"XXXXXXXXXXXXXXXXXXXXipconfig

XXXXXXXXXXXXXXXXXXXX
XXXXXXXXXXXX M MATX XXXX i ITX XXXX D4 DDR4 XXXX D5 DDR5 XXXX R2.0 XXXXXXX XXX
XXXX II XXXXXXX XXXX WIFI XXXXXXX XXXX OC XXXXXXX XXXX GMZR XXXXXXX XXXX ZAKU XXXXXXX XXXX ...

SCI XXX reject XXXXXXX resubmit XXXXXXX - XX
XXXXXXXXXXXX resubmit XXXXXXX reject XXXXXXXXXXXXXXXXXXXXXXX XXXXXXXXXXXXXXXXXXXXXXXXXXXXXXXXXXXXXXX
XSCI XXXXXXX SCI XXX XXXXXXX SCI XXXXXXXXXXXXXXX XXXXXXX SCI XXXXXXXXXXXXXXXXXXXXXXX ...

sci XXX Declaration of interest XXX? - XX

COI/Declaration of Interest forms from all the authors of an article is required for every submiss...

XXXXXXXXXXXXXXXXXXXX - XX
Oct 14, 2013 · XXXXXXXXXXXXXXXXXXXXXXX CD XXXXXXXXXXXXXXXXXX XXXXXXX...XXXXXXXXXXXX...

XXXXXXXXXXXX XXXXXX@XXX_XXXX

Explore the profound themes in "All is Silence" by Robert L. Slater. Discover how silence shapes identity and experience. Learn more about this impactful work!

[Back to Home](#)