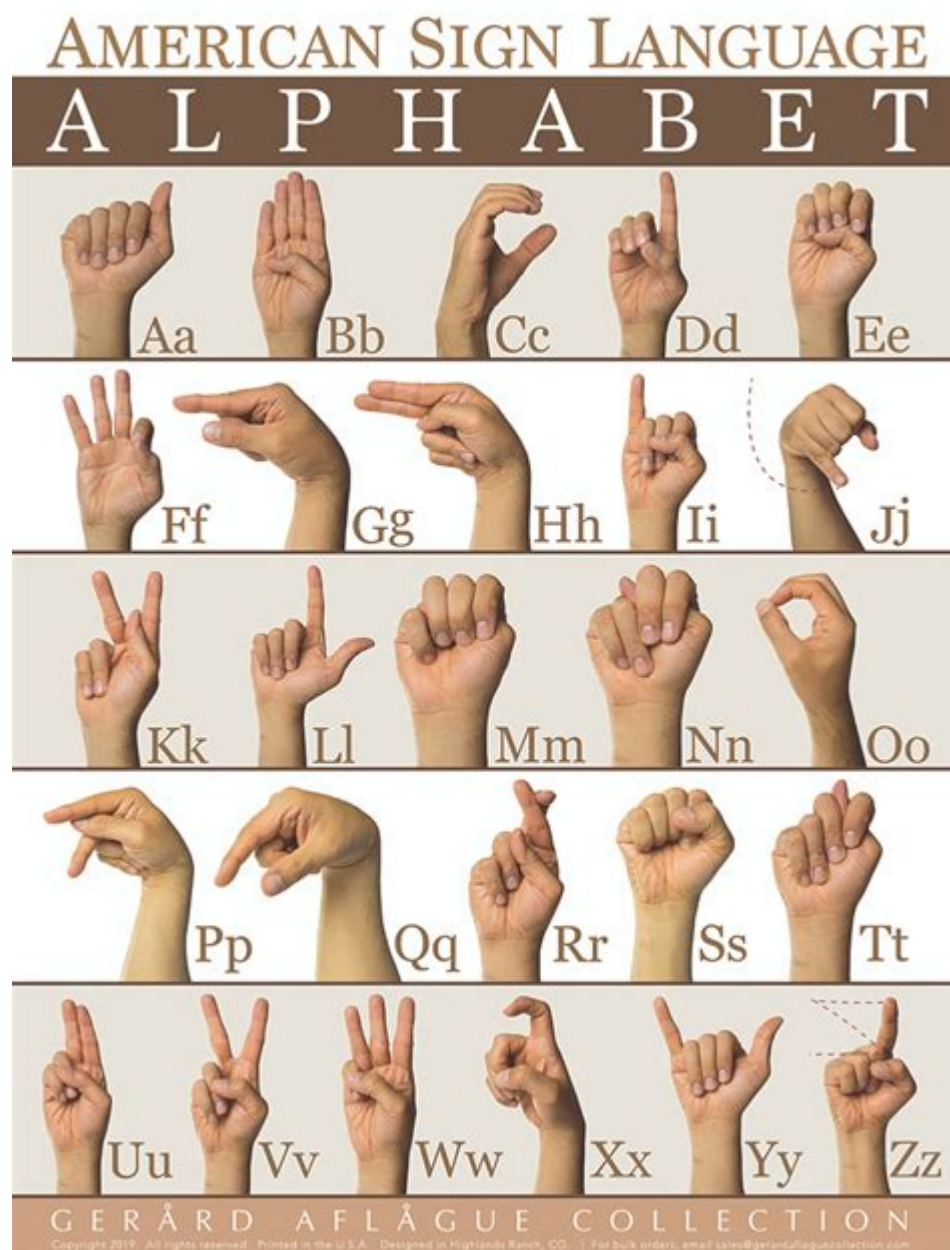


Alphabet Sign Language Chart



Alphabet sign language chart is an essential tool for individuals who wish to communicate using sign language, particularly for those who are deaf or hard of hearing. This chart serves as a visual guide to the manual alphabet, which is a crucial component of sign language systems. The manual alphabet allows users to spell out words and names that do not have a specific sign, thereby enhancing communication options. In this article, we will explore the significance of the alphabet sign language chart, the various sign languages that utilize manual alphabets, and how to effectively learn and use them.

Understanding Sign Language

Sign language is a visual means of communication that uses gestures, facial expressions, and body language. It is not a universal language; rather, there are various sign languages around the world, each with its own syntax and lexicon.

The Importance of the Manual Alphabet

The manual alphabet is a system of hand shapes that correspond to the letters of the alphabet. Here are some key points about its importance:

1. **Facilitates Spelling:** The manual alphabet allows individuals to spell out names, places, and words that may not have specific signs available.
2. **Enhances Vocabulary:** Learning the manual alphabet expands the vocabulary of sign language users, enabling them to communicate more effectively.
3. **Bridges Communication Gaps:** In situations where specific signs may not be known, the manual alphabet serves as a bridge for effective communication.
4. **Cultural Significance:** The manual alphabet is often intertwined with the culture of the deaf community, making it an important aspect of identity for many.

Different Sign Languages and Their Manual Alphabets

Various sign languages around the world have their own manual alphabets. Here's a look at some of the most widely recognized sign languages and their corresponding alphabets:

American Sign Language (ASL)

- **Alphabet:** The ASL manual alphabet consists of 26 handshapes, each representing a letter from A to Z.
- **Usage:** ASL is primarily used in the United States and parts of Canada. It is a distinct language with its own grammar and syntax.

British Sign Language (BSL)

- Alphabet: BSL features a two-handed manual alphabet, which differs from the one-handed ASL alphabet.
- Usage: BSL is used in the United Kingdom and has its own unique signs and grammatical structures.

International Sign (IS)

- Alphabet: IS does not have a standardized manual alphabet but incorporates elements from various sign languages, allowing for international communication among deaf individuals.
- Usage: IS is often used at international deaf events and conferences.

Other Languages

- French Sign Language (LSF): LSF has its own alphabet and is used primarily in France and Francophone countries.
- German Sign Language (DGS): DGS utilizes a one-handed manual alphabet and has distinct signs not found in ASL.
- Spanish Sign Language (LSE): LSE features a unique manual alphabet and is used in Spain.

Learning the Alphabet Sign Language Chart

Learning a manual alphabet is an essential step for anyone interested in mastering sign language. Here are some effective strategies for learning the alphabet sign language chart:

Visual Learning

1. Study Charts: Use visual aids like charts that depict each letter of the alphabet with corresponding hand shapes.
2. Flashcards: Create or purchase flashcards that show the letter and the corresponding hand signal, allowing for quick reference and practice.
3. Video Resources: Online platforms like YouTube have numerous tutorials

demonstrating the manual alphabet in action.

Repetition and Practice

1. **Daily Practice:** Consistency is key. Set aside time each day to practice the manual alphabet.
2. **Spelling Out Words:** Begin with simple words and gradually increase the complexity as you become more comfortable with the alphabet.
3. **Engage with Others:** Practice with friends or fellow learners who are familiar with sign language to enhance your skills.

Immersive Learning

1. **Join Classes:** Consider enrolling in a sign language class where you can learn the manual alphabet along with other aspects of the language.
2. **Attend Deaf Events:** Participating in deaf community events can provide real-world practice and exposure to fluent sign language users.
3. **Use Technology:** There are numerous apps available that can help users practice and learn sign language through games and interactive lessons.

Practical Applications of the Alphabet Sign Language Chart

Understanding the manual alphabet opens up a variety of practical applications:

Everyday Communication

- **Spelling Names:** When meeting someone new, you can spell out their name if you don't know the sign.
- **Ordering at Restaurants:** The manual alphabet is handy for ordering food items that may not have specific signs.
- **Labeling:** Use the manual alphabet to label items around your home or workspace to reinforce learning.

Educational Settings

- Inclusive Education: Teachers can use the manual alphabet to communicate with deaf students, fostering an inclusive learning environment.
- Peer Communication: Students can communicate with their peers, facilitating friendships and social interactions.

Community Engagement

- Volunteering: Many organizations require volunteers who can communicate in sign language, making the manual alphabet a valuable skill.
- Advocacy: Understanding the manual alphabet can help individuals advocate for the deaf community and promote awareness.

Challenges in Learning the Manual Alphabet

While learning the alphabet sign language chart can be rewarding, it comes with its challenges:

1. Physical Coordination: Some individuals may struggle with the physical aspect of forming the letters correctly.
2. Memory Retention: Retaining the shapes and movements of the manual alphabet can be difficult without regular practice.
3. Access to Resources: Not everyone has access to sign language classes or resources, which can hinder learning.

Overcoming Challenges

- Practice Mindfulness: Being mindful during practice can enhance focus and improve coordination.
- Utilize Online Resources: Many free online resources can supplement learning and provide additional practice opportunities.
- Seek Community Support: Joining deaf community groups can provide encouragement and camaraderie during the learning process.

Conclusion

The alphabet sign language chart is more than a mere visual guide; it is a gateway to understanding and participating in the rich and diverse world of sign language. Mastering the manual alphabet not only enhances communication but also fosters inclusion and understanding among individuals. Whether for personal enrichment, professional development, or community engagement, learning the manual alphabet is a valuable skill that opens doors to meaningful connections and interactions. By overcoming challenges and dedicating time to practice, anyone can become proficient in using the manual alphabet, contributing to a more inclusive society.

Frequently Asked Questions

What is an alphabet sign language chart?

An alphabet sign language chart visually represents the hand signs for each letter of the alphabet used in sign languages, helping learners to understand and communicate effectively.

How can I use an alphabet sign language chart to learn?

You can use the chart to practice by associating each letter with its corresponding sign, repeating the signs while focusing on the hand shapes, and incorporating them into words and sentences.

Are there different alphabet sign language charts for various sign languages?

Yes, different sign languages, such as ASL (American Sign Language), BSL (British Sign Language), and others, have their own unique alphabet signs and charts.

Where can I find a reliable alphabet sign language chart?

You can find reliable alphabet sign language charts online through educational websites, libraries, or organizations focused on deaf education, as well as in books about sign language.

Is it important to learn the alphabet in sign language?

Yes, learning the alphabet is crucial as it allows individuals to spell out words, names, and concepts that do not have specific signs, enhancing communication in sign language.

Can I print an alphabet sign language chart for personal use?

Absolutely! Many websites offer free downloadable and printable alphabet sign language charts that you can use at home or in educational settings.

What are some tips for memorizing the signs on an alphabet sign language chart?

Tips include practicing regularly, using flashcards, pairing signs with words, watching videos of sign language users, and practicing with a partner or in a group.

How does learning sign language benefit communication with the deaf community?

Learning sign language, including the alphabet, fosters better communication, promotes inclusivity, and shows respect for the culture and language of the deaf community.

Are there online courses that teach the alphabet in sign language?

Yes, there are numerous online courses, tutorials, and video lessons available that teach the alphabet in various sign languages, often including interactive elements to enhance learning.

Find other PDF article:

<https://soc.up.edu.ph/22-check/files?docid=RhM77-2252&title=financial-derivatives-in-theory-and-practice.pdf>

[Alphabet Sign Language Chart](#)

□□□□□□□□ - □□

1. □□□□□□ □□□□Turing Machine□□□□□1936□□□□ "On Computable Numbers, with an Application to the Entscheidungsproblem"□□□□□□□□□□□□□□□□ ...

Home - Play Safe Pro

Alphabet Soup Similar to Scattergories® but with sexual health content, this game is designed to start sexual health conversations in a fun, easy and non-confrontational way.

□□□□□□□□□□□□□□□□? - □□

□ ICP □ 110745 □ · □ ICP □ 13052560 □ - 1 · □□□□□ 11010802020088 □ · □□□□□□□□□□□□□□11220250001 · □□□ [2022]2674-081 □ · □□□□□□□□□□□□□□□□ ...

papi 00 0000 Kepler00000-452b Alphabet c0000 0000000000000000 000000000000 d0000 000000000000
000000000000 ...

□□□□□ α □□□□ a □□□□ - □□

a Humanist Hand Renaissance Humanists
 Typography Humanist ...

Alphabet - □□

Alphabet 株式会社 “Umbrella Company” Alphabet 株式会社 YouTube 株式会社
株式会社 Alphabet 株式会社 GOOGLE ...

□□□□IPA□□□□□□□□□□□□□□ - □□

Jan 29, 2023 · **한글 발음기호 IKPA** [International Korean phonetic alphabet] **한글 발음기호 IKPA**
한글 발음기호

Alphabet Soup | Play Safe Pro

Games Fun and interactive games and activities to use with young people for education, and to open up conversations with young people around sexual health.

□□□□24□“X”□□□□?□□□“□”□“□”□□□“□”□ - □□

liouperng 𐌆𐌋𐌗𐌄𐌿𐌺𐌽𐌰 𐌲𐌴 𐌲𐌴𐌴Greek Alphabet𐌆𐌋𐌗𐌄𐌿𐌺𐌽𐌰 ch, ph, th𐌆𐌋𐌗𐌄𐌿𐌺𐌽𐌰
𐌆𐌋𐌗𐌄𐌿𐌺𐌽𐌰 ...

A:Alpha B:Bravo C:Charlie ... -

aaaaaa aaa 3 aaaaaaaa ICA International Communications Alphabet aaaa 2021-01-26 01:48 szxw 1 aaaa
aaaa

□□□□□□□□ - □□

1. 图灵 Turing Machine 1936 年 "On Computable Numbers, with an Application to the Entscheidungsproblem" 论文奠定了现代计算机科学的基础。...

Home - Play Safe Pro

Alphabet Soup Similar to Scattergories® but with sexual health content, this game is designed to start sexual health conversations in a fun, easy and non-confrontational way.

[illegible]

ICP 110745 · ICP 13052560 - 1 · 11010802020088 · 11220250001
· [2022]2674-081 · 202200334 · :06591
· 2022 ...

[illegible]

papi 00 000 Kepler0000-452b Alphabet c0000 0000000000000000 0000000000 d0000 0000000000
00 ...

□□□□□□ α □□□□ a □□□□ - □□

a Humanist Renaissance Humanists
 Typography Humanist a Italic Hand Chancery
 Script Font Book ...

