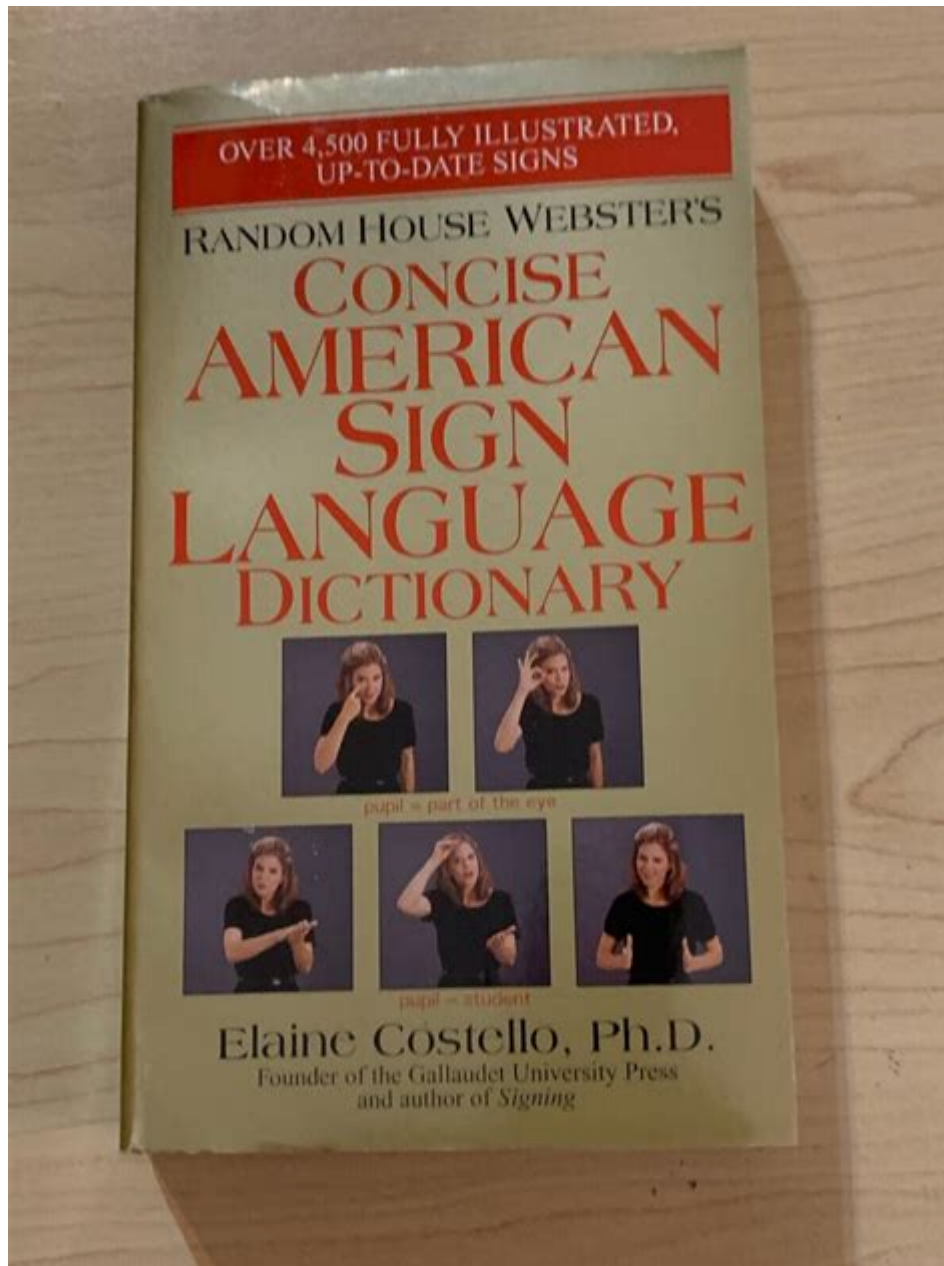


American Sign Language Dictionary Elaine Costello



American Sign Language Dictionary Elaine Costello is a pivotal resource for those interested in learning and understanding American Sign Language (ASL). The dictionary, curated by Elaine Costello, serves as an essential guide for both beginners and advanced signers, providing clarity and depth to the beautiful and complex language of the Deaf community. This article will delve into the significance of the dictionary, its structure, the contributions of Elaine Costello, and its impact on the study of ASL.

Understanding American Sign Language

American Sign Language is a complete, natural language that has its own grammar, syntax, and cultural nuances. It is primarily used by the Deaf and hard-of-hearing communities in the United States and parts of Canada. Unlike spoken languages, ASL utilizes hand shapes, facial expressions, and body movements to convey meaning.

Importance of a Dictionary for ASL

Having a comprehensive dictionary for ASL is crucial for several reasons:

1. **Standardization:** ASL has regional variations, and a dictionary helps to standardize signs across different areas.
2. **Learning Tool:** For learners, a dictionary serves as a vital resource to understand signs and their meanings.
3. **Cultural Preservation:** A dictionary helps preserve the language and culture of the Deaf community, which is essential for fostering understanding and respect.
4. **Resource for Interpreters:** Professional interpreters benefit from dictionaries to ensure accuracy and consistency in their interpretations.

Elaine Costello: A Pioneer in ASL

Elaine Costello is a notable figure in the realm of ASL education and research. She has dedicated her career to the advancement of Deaf education and the promotion of ASL as a legitimate language. Her work has been instrumental in creating resources that help bridge the gap between the hearing and Deaf communities.

Background and Education

Elaine Costello holds a degree in education and has worked extensively with Deaf children and adults. Her experiences in various educational settings have given her a unique perspective on the challenges faced by Deaf individuals, as well as the importance of effective communication.

Contributions to ASL

Costello's most notable contribution is the American Sign Language Dictionary, which she published to provide a comprehensive resource for learners and users of ASL. Some of her significant contributions include:

- **Creating Clear Definitions:** Costello's dictionary offers detailed definitions and contextual usage for each sign.
- **Visual Representation:** The dictionary includes illustrations and photographs, making it easier for learners to understand the signs.
- **Cultural Insights:** Costello emphasizes the cultural significance of ASL, providing users with a deeper understanding of the Deaf community.

The Structure of the American Sign Language Dictionary

The American Sign Language Dictionary by Elaine Costello is organized in a user-friendly manner, designed to facilitate both learning and reference.

Alphabetical Organization

The dictionary is organized alphabetically, allowing users to quickly find the signs they are looking for. Each entry typically includes:

- **Sign Illustration:** A visual representation of the sign, often accompanied by multiple angles to clarify the handshape and movement.
- **Definition:** A clear and concise definition of the sign's meaning.
- **Usage Examples:** Contextual sentences demonstrating how to use the sign in conversation.
- **Related Signs:** Information about similar or related signs, helping learners understand variations in meaning.

Sections of the Dictionary

The dictionary is divided into several sections that enhance its usability:

1. **Basic Signs:** This section covers fundamental signs that are essential for everyday communication.
2. **Conversational Phrases:** Common phrases used in casual conversations are compiled here, aiding learners in practical usage.
3. **Specialized Vocabulary:** Signs related to specific fields, such as medicine or education, provide valuable resources for professionals.
4. **Cultural Notes:** Insights into Deaf culture and community practices are included to enrich users'

understanding.

Impact of the American Sign Language Dictionary

The American Sign Language Dictionary by Elaine Costello has made a significant impact on the education and understanding of ASL.

For Learners

- **Accessibility:** The dictionary makes ASL accessible to a wider audience, enabling more people to learn the language.
- **Enhanced Communication:** By providing clear definitions and visuals, learners can improve their signing skills, leading to more effective communication with Deaf individuals.
- **Cultural Understanding:** The inclusion of cultural notes fosters respect and appreciation for the Deaf community.

For Educators

- **Teaching Resource:** Educators can utilize the dictionary as a teaching tool in classrooms, enhancing their lesson plans and activities.
- **Standardization of Signs:** The dictionary helps teachers ensure that their students learn standardized signs, reducing confusion and promoting consistency.

For the Deaf Community

- **Cultural Preservation:** Costello's work contributes to the preservation of ASL as an essential part of Deaf culture.
- **Promotion of ASL:** The dictionary has helped raise awareness about ASL as a legitimate language, advocating for its recognition in educational institutions.

Challenges and Future Directions

While the American Sign Language Dictionary by Elaine Costello is a significant contribution to ASL education, there are challenges and areas for future development.

Challenges in ASL Education

- **Misconceptions:** Many people still hold misconceptions about ASL being a simple or rudimentary language.
- **Lack of Resources:** There is a need for more comprehensive ASL resources, especially for specialized fields and advanced learners.
- **Technology Integration:** The rise of technology presents both opportunities and challenges for ASL education, necessitating the development of digital resources.

Future Directions

To continue the positive impact of the dictionary, the following areas could be explored:

1. **Digital Versions:** Developing an online platform for the dictionary could enhance accessibility and usability.
2. **Interactive Learning:** Incorporating videos and interactive content could improve engagement for learners.
3. **Community Involvement:** Encouraging contributions from the Deaf community can help keep the dictionary relevant and inclusive.

Conclusion

The American Sign Language Dictionary by Elaine Costello is more than just a reference book; it is a vital tool for bridging communication gaps, preserving culture, and fostering understanding between the hearing and Deaf communities. Through its comprehensive structure and Elaine Costello's dedication, the dictionary has become an indispensable resource for learners, educators, and professionals alike. As the landscape of ASL continues to evolve, the dictionary remains a cornerstone in the ongoing journey of promoting and celebrating the beauty of American Sign Language.

Frequently Asked Questions

Who is Elaine Costello in relation to American Sign Language?

Elaine Costello is a prominent figure in the field of American Sign Language (ASL), known for her work in creating and developing ASL dictionaries and resources.

What is the significance of the 'American Sign Language Dictionary' by Elaine Costello?

The 'American Sign Language Dictionary' by Elaine Costello is significant because it provides a comprehensive resource for learning and understanding ASL, containing thousands of signs with detailed descriptions.

What makes Elaine Costello's ASL dictionary unique?

Elaine Costello's ASL dictionary is unique because it combines visual representations of signs with clear definitions and usage examples, making it accessible for both learners and educators.

How has Elaine Costello contributed to ASL education?

Elaine Costello has contributed to ASL education by authoring resources, producing educational materials, and promoting the importance of ASL as a legitimate language in academic settings.

Is Elaine Costello's ASL dictionary available in digital format?

Yes, Elaine Costello's ASL dictionary is available in various formats, including print and digital, making it easier for users to access and learn from.

What audience is Elaine Costello's ASL dictionary aimed at?

Elaine Costello's ASL dictionary is aimed at a diverse audience, including students, teachers, interpreters, and anyone interested in learning American Sign Language.

Are there any notable features of the ASL dictionary authored by Elaine Costello?

Notable features of Elaine Costello's ASL dictionary include illustrations of signs, contextual examples, and references to cultural nuances within the Deaf community.

How can Elaine Costello's ASL dictionary assist in bridging communication gaps?

Elaine Costello's ASL dictionary can assist in bridging communication gaps by providing essential resources for hearing individuals to learn ASL, thereby fostering better communication with Deaf individuals.

What impact has Elaine Costello had on the perception of ASL?

Elaine Costello has had a positive impact on the perception of ASL by emphasizing its validity as a language and advocating for its inclusion in educational curricula and public awareness initiatives.

<https://soc.up.edu.ph/59-cover/Book?docid=HbB70-6220&title=the-great-stagnation-how-america-at-e-all-low-hanging-fruit-of-modern-history-got-sick-and-will-eventually-feel-better-tyler-cowen.pdf>

“ american megatrends”

□□□□□□□? - □□□□

american megatrends bios - 0000

" " " " " " - " "

US USA America 00000 0000

SCI□□□□□□□□ - □□□□

APA-2000 - 00

American Megatrends □□□□*bios* □□□□

American Megatrends BIOS
F12 BIOS

JACS Angew NC ...

NCJACS Angew NC
...

_____ - _____

·Journal Of The American Mathematical Society 1988 ...
[32] ...

“american megatrends”

Aug 29, 2024 · ["american megatrends"](#)["American Megatrends"](#)[POST](#)
[BIOS](#)[BIOS](#)

□□□□□□□? - □□□□

United States of America
America “” “” “” “” “” “” “” “”
“” “” “” ...

american megatrends bios - 1111

Mar 3, 2025 · American Megatrends BIOS
 DEL F2 F10 ...

“ ” -

1 America the United States 1 America [ə'merikə] [ə'mɛrikə] 2 the United States [di
 ju'natɪd stets] 3 U.S. A. (=the United States of America) 4 ...

US USA America

US[USA]America[1]America[“”]“”[USA]
[US]America[] ...

SCI□□□□□□□□ - □□□□

Aug 20, 2024 · SCI JACS applied materials & interfaces ACS Appl. Mater. Interfaces ACS Catalysis ACS Catal. ACS Applied Nano Materials ...

APA -

Dec 20, 2023 · American Psychological Association 121,000 ...

American Megatrends 1990s

```
American Megatrends []bios[]BIOS[] [] DEL[]F2[]F10 []  
F12[] []BIOS[]
```

JACS Angew NC ...

NC JACS Angew NC
...

□□□□□□□□ - □□

·Journal Of The American Mathematical Society□□□□□□1988□□□□□□□□□□□□□□□□□□□□
□32□□□□□□□□□□ ...

Explore the comprehensive American Sign Language dictionary by Elaine Costello. Enhance your signing skills and understanding today! Learn more now!

[Back to Home](#)