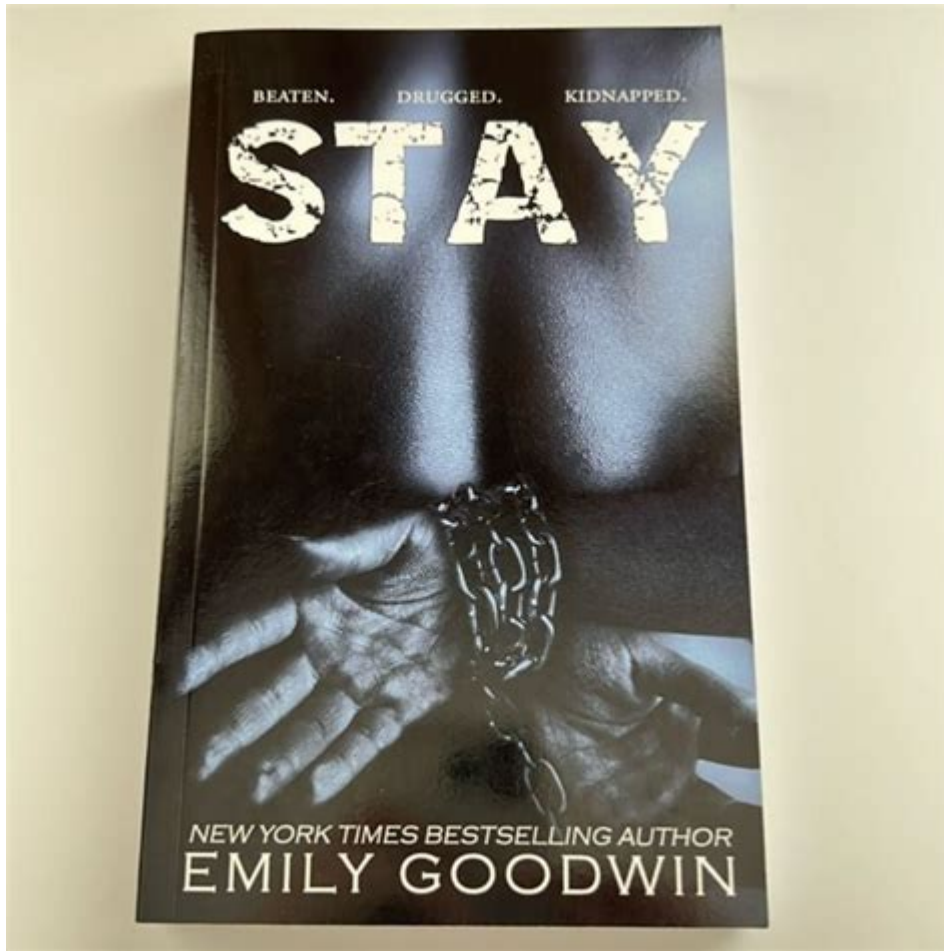


All I Need Stay 2 Emily Goodwin



All I Need Stay 2 Emily Goodwin is a captivating title that has garnered attention among readers of contemporary romance literature. Emily Goodwin is a well-known author who has made a name for herself in the genre, often exploring themes of love, loss, and personal growth. In this article, we will delve into the intricacies of "All I Need Stay 2," examining its characters, themes, and overall impact on readers while highlighting why it stands out in Goodwin's body of work.

Overview of Emily Goodwin's Work

Emily Goodwin is a prolific author whose stories resonate with her readers due to their relatable characters and emotional depth. She has written numerous novels, primarily in the romance genre, but often weaves in elements of suspense and drama. Goodwin's ability to create authentic situations and complex relationships allows her to connect with her audience on a personal level.

Key Features of Goodwin's Writing Style

1. **Character Development:** Goodwin is known for her well-rounded characters. They possess flaws and strengths that make them relatable and realistic.
2. **Emotional Depth:** Her stories often evoke a wide range of emotions, allowing readers to experience joy, sadness, and everything in between.
3. **Engaging Plot Lines:** Goodwin's plots are often filled with twists that keep readers on the edge of their seats, eager to see what will happen next.

Setting the Scene: All I Need Stay 2

"All I Need Stay 2" is a sequel in the "All I Need" series, which follows the lives of the characters introduced in the first book. The sequel builds on the foundation laid by its predecessor, offering a richer exploration of the themes introduced earlier.

Plot Summary

The story picks up where the first book left off. We rejoin the main characters as they navigate the complexities of their relationships and personal lives. This installment delves deeper into their emotional struggles, highlighting the challenges they face while trying to maintain their connection amidst adversity.

Some key events in the plot include:

- **Character Growth:** The characters undergo significant development, learning from their past mistakes and striving to become better versions of themselves.
- **Conflict and Resolution:** Central conflicts emerge that test the bonds between characters, leading to moments of tension and eventual resolution that feel satisfying and earned.
- **Romantic Elements:** As expected from a Goodwin novel, romance plays a crucial role, showcasing the beauty and challenges of love.

Character Analysis

The characters in "All I Need Stay 2" are multifaceted, each bringing unique perspectives and experiences to the table. Here are some key characters:

Main Characters

1. **Protagonist:** The focal character often grapples with personal demons and seeks love and acceptance. Their journey is relatable and resonates with readers who have faced similar struggles.

2. Love Interest: This character embodies the qualities that complement the protagonist, creating a dynamic tension that drives the romantic plot forward.

3. Supporting Characters: Goodwin skillfully crafts supporting characters who add depth to the story. They often serve as foils to the main characters, providing alternative viewpoints and enriching the narrative.

Character Relationships

The relationships between characters are central to the narrative. Goodwin explores various dynamics, including:

- Romantic Relationships: These relationships are often fraught with challenges but ultimately highlight the beauty of love.

- Friendships: The importance of friendship is emphasized, showcasing how these bonds support the main characters throughout their journeys.

- Family Dynamics: Family plays a significant role in shaping the characters' identities and influencing their choices.

Themes Explored in All I Need Stay 2

Goodwin's work often includes several recurring themes that resonate with readers. In "All I Need Stay 2," these themes are explored in depth:

Love and Sacrifice

One of the central themes of the book is the nature of love and the sacrifices that often accompany it. Characters grapple with the notion of what it means to love someone fully, often having to make difficult choices that challenge their commitments.

Personal Growth

The journey of self-discovery is prevalent throughout the narrative. Characters confront their fears, insecurities, and past mistakes, leading to significant growth. This theme mirrors the real-life experiences of many readers, making it relatable and impactful.

Resilience and Forgiveness

Resilience is another key theme, as characters face setbacks and challenges. The ability to

forgive oneself and others is crucial in the narrative, emphasizing the importance of moving forward despite past hurts.

Reader Reception and Impact

"All I Need Stay 2" has received positive feedback from both fans of the series and new readers alike. The emotional depth and relatable characters have resonated with many, leading to discussions and recommendations within the reading community.

Critical Acclaim

- Emotional Resonance: Many readers have praised Goodwin for her ability to evoke strong emotions, making them feel deeply connected to the characters and their journeys.
- Relatable Themes: The themes of love, sacrifice, and personal growth have struck a chord with readers, leading to meaningful reflections on their own lives.
- Character Connections: Readers frequently mention how they feel as though they know the characters personally, further enhancing their enjoyment of the story.

Conclusion

In summary, "All I Need Stay 2" by Emily Goodwin is a powerful continuation of a beloved series that delves into the complexities of love, personal growth, and the importance of relationships. Goodwin's skillful storytelling, well-developed characters, and exploration of relatable themes make this book a must-read for fans of contemporary romance. Through her work, she invites readers to reflect on their experiences while providing an engaging and emotional journey that stays with them long after they've turned the last page. Whether you are a long-time fan of Emily Goodwin or a newcomer to her work, "All I Need Stay 2" promises an enriching reading experience that will leave you eagerly anticipating her next installment.

Frequently Asked Questions

What is the central theme of 'All I Need Stay 2' by Emily Goodwin?

The central theme revolves around love, personal growth, and the complexities of relationships, exploring how characters navigate their emotions and challenges.

Who are the main characters in 'All I Need Stay 2'?

The main characters include the protagonist, who faces various life challenges, and key figures in her life that influence her journey, including friends and romantic interests.

How does 'All I Need Stay 2' connect to the first book?

'All I Need Stay 2' serves as a sequel, building upon the events and character arcs established in the first book, while introducing new conflicts and developments.

What style of writing does Emily Goodwin use in 'All I Need Stay 2'?

Emily Goodwin employs a contemporary, engaging writing style that combines emotional depth with relatable dialogue and vivid descriptions.

Are there any significant plot twists in 'All I Need Stay 2'?

Yes, the book includes several unexpected plot twists that challenge the characters' relationships and force them to confront their pasts.

What audience is 'All I Need Stay 2' intended for?

The book is primarily targeted towards young adult and new adult readers who enjoy romance and emotional drama.

How does the setting influence the story in 'All I Need Stay 2'?

The setting plays a crucial role in shaping the characters' experiences and interactions, often reflecting their inner struggles and growth.

What are some key messages conveyed in 'All I Need Stay 2'?

Key messages include the importance of resilience, the value of true friendship, and the idea that love can overcome obstacles.

Is there a cliffhanger at the end of 'All I Need Stay 2'?

Yes, the ending leaves readers with a cliffhanger that sets the stage for potential future installments, keeping them eager for more.

Find other PDF article:

<https://soc.up.edu.ph/25-style/pdf?ID=sDx14-1080&title=graduate-school-of-business-stanford-university.pdf>

All I Need Stay 2 Emily Goodwin

[illegible]

Open Access **Nature Communications** **Open Access**

all reviewers assigned 20th february editor assigned 7th january manuscript submitted 6th january ☐
☐☐☐☐☐ ...

```
root@kali:~# ipconfig
root@kali:~# IP - 192.168.1.100
root@kali:~# ipconfig
root@kali:~# IP
root@kali:~# ipconfig
root@kali:~# IP
root@kali:~# "root@kali:~# "
root@kali:~# ...
```

XXXXXXXXXXXXXXXXXXXX
XXXXXXXXXX M\MATX XX XXXXi\ITX XX D4\DDR4 XXXX D5\DDR5 ...

SCI reject resubmit -
 resubmit reject

██████@█████ - █████
██@██████

Nature Communications Online ...

all reviewers assigned 20th february editor assigned 7th january manuscript submitted 6th january
 2nd june review complete 29th may all reviewers assigned 14th may editor assigned
 12th may manuscript submitted 12th may 4th july review complete 15th june all
 reviewers ...

ipconfig - **IP**

ipconfig **IP** **ipconfig** **IP** " " win+R "cmd" "

" **ipconfig**

□□□□□□□□□□□□□□□□
 □□□□□□□□□□ □□□□M□MATX□□ □□□□i□ITX□□ □□D4□DDR4□□□□ □□D5□DDR5□□□□ □□R2.0□□□□□□ □□
 □□□□□ II□□□□□ □□WIFI□□□□□□ □□OC□□□□□□ □□GMZR□□□□□□□□ □□ZAKU□□□□□□□□ □□ ...

SCIrejectresubmit -
 resubmitreject
 SCI SCI SCI SCI ...

sci Declaration of interest - COI/Declaration of Interest forms from all the authors of an article is required for every submiss...

Oct 14, 2013 · CD XXX ...

[illegible]

Required Reviews Completed

Jun 12, 2022 · 4

-

2011 1

Discover the captivating journey in "All I Need Stay 2" by Emily Goodwin. Uncover the twists and turns of this thrilling tale. Learn more now!

[Back to Home](#)