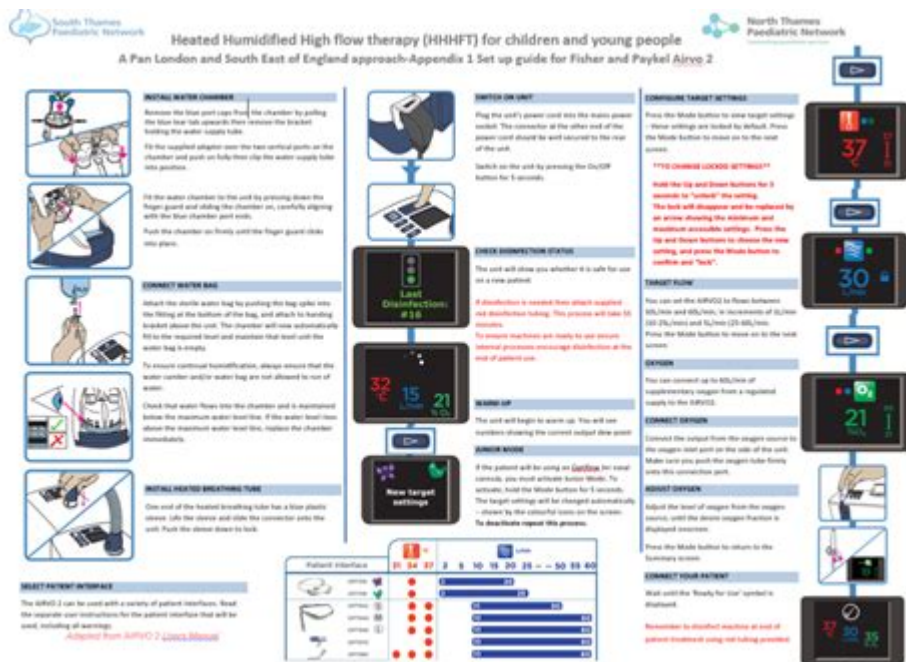


Airvo 2 Error Codes



Airvo 2 error codes are critical for healthcare professionals who utilize the Airvo 2 device for delivering high-flow nasal oxygen therapy. Understanding these error codes is essential for troubleshooting and ensuring the device operates effectively. The Airvo 2 is designed to provide precise and comfortable respiratory support, and when it encounters issues, the error codes serve as indicators for necessary actions. This article delves into common error codes associated with the Airvo 2, their meanings, troubleshooting steps, and preventive measures to ensure optimal device performance.

Understanding Airvo 2 and Its Functionality

The Airvo 2 is a sophisticated medical device that delivers heated and humidified high-flow nasal oxygen therapy. It is widely used in hospitals and home care settings to treat patients with respiratory distress, such as those suffering from chronic obstructive pulmonary disease (COPD), pneumonia, or COVID-19. The device combines a flow generator with a humidification system and nasal cannula to ensure that patients receive the necessary oxygen in a comfortable and effective manner.

Key Features of Airvo 2

- High-Flow Therapy: Capable of delivering up to 60 liters per minute of oxygen.

- Heated and Humidified Gas: Provides warmth and moisture to the air, improving patient comfort.
- Integrated Sensor: Monitors flow and temperature for optimal delivery of therapy.
- User-Friendly Interface: Simple screen navigation for quick adjustments.

Common Airvo 2 Error Codes

Understanding the various error codes can empower clinicians to respond appropriately when the device malfunctions. Here are some of the most common Airvo 2 error codes:

Error Code 100: Low Power

- Meaning: This error indicates that the device is not receiving adequate power supply.
- Troubleshooting Steps:
 1. Check the power connection to ensure it is securely plugged in.
 2. Inspect the power outlet for functionality by plugging in another device.
 3. Verify the power cord for any visible damage.

Error Code 101: Over Temperature

- Meaning: The device has detected an overheating condition.
- Troubleshooting Steps:
 1. Ensure that the device is placed in a well-ventilated area.
 2. Check for blockages in the air intake or exhaust vents.
 3. If the error persists, allow the device to cool down before restarting.

Error Code 102: Humidifier Not Detected

- Meaning: The device cannot detect the humidifier unit.
- Troubleshooting Steps:
 1. Ensure that the humidifier is properly attached to the Airvo 2.
 2. Check for any obstructions or debris in the connection points.
 3. Replace the humidifier if it appears damaged or non-functional.

Error Code 103: Flow Sensor Error

- Meaning: An issue with the flow sensor has been detected.
- Troubleshooting Steps:

1. Inspect the flow sensor for any blockages or damage.
2. Clean the sensor area according to the manufacturer's guidelines.
3. Restart the device to see if the error resolves.

Error Code 104: Water Level Low

- Meaning: The water reservoir is below the minimum required level.
- Troubleshooting Steps:
 1. Check the water level in the humidifier chamber.
 2. Refill with distilled water if necessary.
 3. Ensure that the humidifier is correctly seated in the device.

Error Code 105: External Temperature Sensor Error

- Meaning: The external temperature sensor is not functioning correctly.
- Troubleshooting Steps:
 1. Check the sensor for any visible damage or disconnection.
 2. Ensure the device is not exposed to extreme temperatures.
 3. Contact technical support if the issue persists.

Responding to Error Codes

When an error code appears on the Airvo 2, it is crucial to respond promptly to avoid interruptions in patient care. Here's a systematic approach to responding to these error codes:

1. Stay Calm: Maintain composure to ensure clear thinking and effective action.
2. Identify the Error Code: Take note of the error code displayed on the device.
3. Refer to the Manual: Consult the user manual for specific troubleshooting steps associated with the error code.
4. Take Action: Follow the recommended troubleshooting steps outlined for that error.
5. Document the Incident: Record the error code, actions taken, and any communications with technical support.
6. Monitor Patient: Ensure that the patient's needs are met during the troubleshooting process.

Preventive Measures for Airvo 2

Preventing errors from occurring in the first place can save time and improve patient safety. Here are some preventive measures that can be implemented:

Regular Maintenance

- Routine Checks: Schedule regular inspections of the device to check for wear and tear.
- Cleaning Protocols: Establish a cleaning schedule for the humidifier, flow sensor, and other components.
- Firmware Updates: Stay updated on firmware releases that may enhance device performance.

Training and Education

- Staff Training: Ensure that all healthcare staff are trained in the proper use and troubleshooting of the Airvo 2.
- Emergency Protocols: Develop clear protocols for responding to error codes and device malfunctions.
- Simulation Drills: Conduct drills to prepare staff for potential equipment failures in a clinical setting.

Environmental Considerations

- Device Location: Place the device in an area with good ventilation and away from extreme temperatures.
- Power Supply: Use surge protectors to prevent power-related issues.

Conclusion

In conclusion, understanding Airvo 2 error codes is vital for healthcare providers who rely on this device for effective patient management. Familiarity with the error codes, their meanings, and corresponding troubleshooting steps can significantly enhance the quality of care delivered. By implementing preventive measures and ensuring proper training, healthcare facilities can minimize the occurrence of errors and optimize the functionality of the Airvo 2 device. Regular communication with technical support and adherence to manufacturer guidelines will further ensure patient safety and device reliability.

Frequently Asked Questions

What does error code E1 mean on the Airvo 2 device?

Error code E1 typically indicates a problem with the temperature sensor. It may require checking the device for proper sensor function or calibration.

How can I resolve error code E2 on my Airvo 2?

Error code E2 suggests an issue with the device's humidity sensor. To resolve this, ensure that the sensor is clean and free from obstructions.

What should I do if I encounter error code E3?

Error code E3 refers to a flow sensor failure. Check the flow sensor connections and ensure there are no blockages in the tubing or interface.

Is there a common fix for error code E4 on the Airvo 2?

Error code E4 indicates a problem with the device's internal fan. Ensure the fan is not obstructed and that the device has good ventilation.

What does error code E5 signify and how can it be fixed?

Error code E5 usually points to a power supply issue. Check the power cord, connections, and ensure the device is plugged into a functional outlet.

How often should I check for error codes on the Airvo 2?

It's advisable to regularly monitor the Airvo 2 for any error codes during use, especially during critical care situations, to ensure proper function.

Where can I find a complete list of Airvo 2 error codes and their meanings?

A complete list of Airvo 2 error codes and their meanings can typically be found in the user manual or technical documentation provided by the manufacturer.

Find other PDF article:

<https://soc.up.edu.ph/64-frame/pdf?dataid=cmF28-3132&title=vehicle-gps-tracker-wiring-diagram.pdf>

Airvo 2 Error Codes

Arrastar e soltar arquivos no WhatsApp não funciona. - Microsoft ...

Arrastar e soltar arquivos no WhatsApp não funciona. Boa tarde, Estou com um problema no arrastar e soltar para o aplicativo WhatsApp para Windows, atualmente uso a versão 23H2 ...

Como reabrir o whatsapp web - Fórum TechTudo

Não consigo reabrir a página do whatsapp web pois aparece uma página verde do whatsapp e não o espelho do outro whatsapp, alguém sabe informar?

WhatsApp web sumiu do aplicativo; como WhatsApp no ...

O WhatsApp web não aparece mais desde uma atualização do WhatsApp, vocês sabem como resolver isso?? Eu uso Android e aquele menu lá em cima pra conectar o WhatsApp web não ...

Saifuddin's Whatsapp kena hack - Lowyat.NET

May 27, 2025 · Outline · [Standard] · Linear+ Saifuddin's Whatsapp kena hack 9.2k views ... « Next Oldest · Kopitiam · Next Newest »

Não recebo notificações do navegador Microsoft Edge na Área de ...

Desde que migrei do chrome para o microsoft edge novo não recebo notificações na area de trabalho de todos os sites, basicamente só do whatsapp web. Já chequei se estão ativas e ...

WhatsApp Web: como entrar sem o QR code ou sem câmera?

Galera, como usar o WhatsApp Web no PC sem o QR Code ou sem câmera? Meu celular quebrou e não liga mais. Como não consigo ligar, não tenho como pegar o código.

Why i cant change my font after copy paste? - Microsoft Community

Sep 12, 2024 · Hi, i have some issues which when i try to copy from whatsapp web which is arabic words and paste in words, It seems i cant change the font, and the paste options are ...

Whatsapp web nao mostra imagens enviadas ou recebidas.

Galera, to com um problema estranho. No Whastapp web acessando pelo google chrome, nao consigo visualizar as imagens sejam elas enviadas ou recebidas numa conversa, vejam ...

Conversa não sincroniza no WhatsApp para Windows: o que fazer?

Bom dia a todos! Estou com um problema muito estranho. No Whatsapp Web, somente uma conversa nao sincroniza. Inclusive, ela não aparece na última hora que uma mensagem foi ...

Whatsapp Web não carrega as mensagens; o que fazer?

O WhatsApp Web pode apresentar alguns erros de conectividade com o aplicativo para celular, e, assim, apresentar lentidão ao carregar as mensagens. A primeira sugestão que damos é ...

Download CurseForge App - Mods, Addons and CC Manager

Discover the world's largest mod repository on CurseForge, serving popular games and communities like Minecraft, WoW, The Sims 4, and more.

CurseForge - Desktop App on Overwolf

Explore, download and manage your favourite addons and mods from CurseForge's massive index of user-created projects.

Download Curseforge (free) for Windows, macOS and Linux

Jul 22, 2025 · Power up your favorite games with CurseForge—a free platform to discover, install, and manage mods and modpacks easily, all from a clean and trusted interface. For Windows, ...

CurseForge Download (2025 Latest) - FileHorse

Oct 29, 2024 · To install CurseForge Client, visit the official website or FileHorse, download the installer for your operating system, and run it. Follow the on-screen instructions to complete ...

CurseForge | Download for Free - Epic Games Store

Download CurseForge for FREE at the Epic Games Store. Check for platform availability and play today!

CurseForge Mods and Addons | Overwolf.com

Welcome to the CurseForge community! Build, manage and download mods and addons for your favorite games.

CurseForge - Mods & Addons Leading Community

Discover the world's largest mod repository on CurseForge, serving popular games and communities like Minecraft, WoW, The Sims 4, and more.

🔍 - CurseForge 🔍

🔍🔍🔍 🔍🔍🔍🔍CurseForge🔍🔍🔍🔍🔍

How to Download and Install CurseForge Launcher (2025)

Learn how to install and use the CurseForge Launcher in 2025 to customize Minecraft and other games with ease with this step-by-step article.

App Release Notes - 1.271 - blog.curseforge.com

Feb 4, 2025 · A new warning notification will be shown if there's an attempt to close CurseForge while there are active downloads. Added support for YouTube videos in mods' gallery section.

"Struggling with Airvo 2 error codes? Our comprehensive guide explains common issues and troubleshooting tips. Learn more to keep your device running smoothly!"

[Back to Home](#)