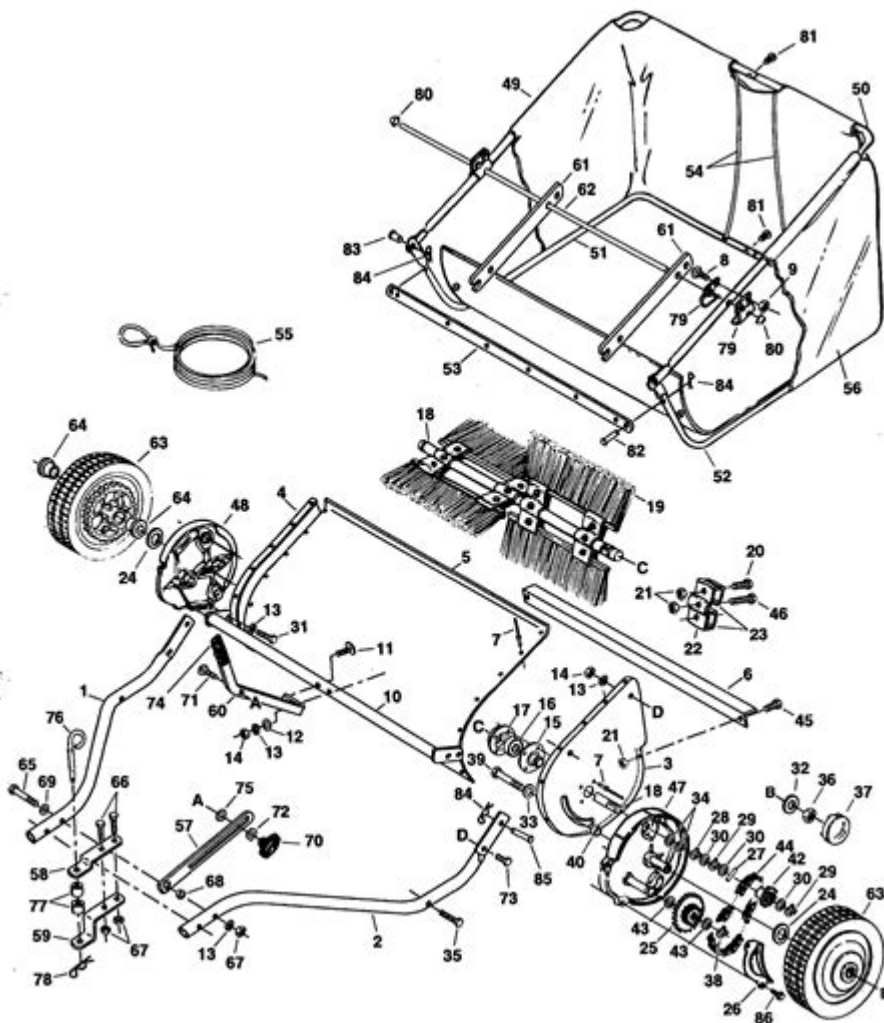


# Agri Fab Lawn Sweeper Parts Diagram



**Agri Fab lawn sweeper parts diagram** is an essential reference for anyone looking to maintain or repair their Agri Fab lawn sweeper. Understanding the various components of your sweeper can enhance its efficiency and prolong its lifespan. This article will provide a comprehensive overview of the Agri Fab lawn sweeper parts diagram, including explanations of each component, common maintenance tips, and how to troubleshoot problems effectively.

## Understanding the Agri Fab Lawn Sweeper

Before diving into the parts diagram, it's important to understand what an Agri Fab lawn sweeper is and how it functions. An Agri Fab lawn sweeper is a landscaping tool designed to collect leaves, grass clippings, and other debris from your lawn. It uses a rotating brush system that sweeps debris into a collection bag, making yard maintenance more manageable and efficient.

# Key Components of the Agri Fab Lawn Sweeper

The efficiency and performance of the lawn sweeper depend on various components. Here's a breakdown of the key parts found in the Agri Fab lawn sweeper:

- **Brush Assembly:** This is the heart of the lawn sweeper, consisting of rotating brushes that gather debris as you push or tow the sweeper across your lawn.
- **Collection Bag:** This bag collects the debris swept up by the brush assembly. It is crucial for keeping your lawn tidy.
- **Tow Bar:** This component allows the lawn sweeper to be attached to a tractor or riding mower, facilitating easy towing across larger areas.
- **Wheels:** The wheels enable the sweeper to move smoothly over the ground. They may be adjustable to accommodate different heights and terrain types.
- **Height Adjustment Lever:** This lever allows you to adjust the height of the brush assembly to optimize the sweeper's performance based on the type of debris and lawn conditions.
- **Frame:** The frame provides structural support and stability to the entire sweeper, ensuring that all parts work together efficiently.
- **Safety Guard:** This part protects the user from the rotating brushes, ensuring safe operation while using the sweeper.

## The Agri Fab Lawn Sweeper Parts Diagram

A parts diagram is a visual representation that illustrates the various components of the Agri Fab lawn sweeper. It is invaluable for understanding how the parts fit together and for troubleshooting issues that may arise during operation.

### Reading the Parts Diagram

When looking at the Agri Fab lawn sweeper parts diagram, you will notice that each component is labeled clearly. Here's how to interpret the diagram:

1. **Identify Components:** Each part will be marked with a number or letter

corresponding to a list of parts. Familiarize yourself with the names and functions of each part.

2. Understand Assembly: The diagram shows how each part connects. This is crucial for reassembly after maintenance or repairs.

3. Locate Common Issues: If you experience problems with your sweeper, refer to the diagram to identify which parts may be malfunctioning or need replacement.

## Common Maintenance Tips for Your Lawn Sweeper

Proper maintenance is key to ensuring the longevity and performance of your Agri Fab lawn sweeper. Here are some tips to keep in mind:

- **Regular Cleaning:** After each use, clean the brush assembly and collection bag to prevent clogging and ensure optimal performance.
- **Inspect the Brushes:** Check the condition of the brushes regularly. If they are worn down or damaged, replace them to maintain effective sweeping action.
- **Check for Loose Parts:** Periodically inspect the frame and other components for loose bolts or screws. Tighten them as necessary to avoid operational issues.
- **Lubricate Moving Parts:** Regularly lubricate moving parts, such as the wheels and brush bearings, to minimize friction and wear.
- **Store Properly:** When not in use, store the sweeper in a dry place to prevent rust and corrosion.

## Troubleshooting Common Issues with Agri Fab Lawn Sweepers

Even with proper maintenance, you may encounter issues with your lawn sweeper. Here are some common problems and how to troubleshoot them:

### Problem: Sweeper Not Collecting Debris

- **Check Brush Height:** Ensure that the brush height is appropriately adjusted for the type of debris and lawn condition.
- **Inspect the Brushes:** Look for worn or damaged brushes that may need replacement.

- Examine the Collection Bag: Ensure the collection bag is not full or clogged, as this will impede collection.

## **Problem: Uneven Sweeping**

- Adjust Wheel Height: Ensure that the wheels are set at the correct height for your lawn.
- Check for Damage: Inspect the frame and brush assembly for any damage that may hinder performance.

## **Problem: Sweeper Difficult to Tow**

- Examine the Tow Bar: Ensure the tow bar is securely attached and not damaged.
- Check Wheel Bearings: Lubricate or replace wheel bearings if they are stiff or damaged.

## **Where to Find Replacement Parts**

If you need to replace any parts for your Agri Fab lawn sweeper, you can find them at various sources:

1. Official Agri Fab Website: The manufacturer's website is often the best place to find authentic replacement parts.
2. Local Garden Supply Stores: Many local retailers carry parts for popular lawn equipment brands, including Agri Fab.
3. Online Retailers: Websites like Amazon or eBay may have a variety of parts available for purchase.

## **Conclusion**

In conclusion, understanding the **Agri Fab lawn sweeper parts diagram** is crucial for maintaining your lawn sweeper and ensuring it operates efficiently. By familiarizing yourself with the key components, performing regular maintenance, and knowing how to troubleshoot common issues, you can keep your lawn looking pristine. Whether you're a DIY enthusiast or someone who prefers to leave repairs to the professionals, a solid grasp of your lawn sweeper's parts will serve you well in your landscaping endeavors.

## **Frequently Asked Questions**

## **What is an Agri-Fab lawn sweeper parts diagram?**

An Agri-Fab lawn sweeper parts diagram is a visual representation that shows the various components of an Agri-Fab lawn sweeper, detailing how each part fits together and functions.

## **Where can I find an Agri-Fab lawn sweeper parts diagram?**

You can find an Agri-Fab lawn sweeper parts diagram on the official Agri-Fab website, in user manuals, or by contacting customer service for assistance.

## **Why is it important to have a parts diagram for lawn sweepers?**

A parts diagram is important for identifying components when performing maintenance, repairs, or replacements, ensuring that the right parts are used and installed correctly.

## **How do I read an Agri-Fab lawn sweeper parts diagram?**

To read an Agri-Fab lawn sweeper parts diagram, familiarize yourself with the key that explains the symbols and numbers used, then match them with the corresponding parts listed.

## **What common parts are typically included in an Agri-Fab lawn sweeper parts diagram?**

Common parts include the hopper, brushes, wheels, frame, axle, and tow hitch, among others.

## **Can I order replacement parts using the Agri-Fab lawn sweeper parts diagram?**

Yes, you can use the parts diagram to identify the specific components you need and order them through the Agri-Fab website or authorized dealers.

## **Is the Agri-Fab lawn sweeper parts diagram the same for all models?**

No, the parts diagram may vary by model. It's important to ensure you are looking at the diagram for your specific Agri-Fab lawn sweeper model.

## **What should I do if a part is missing from my Agri-Fab lawn sweeper?**

If a part is missing, refer to the parts diagram to identify the missing component and contact Agri-Fab or a local dealer to order a replacement.

## Are there online resources available for Agri-Fab lawn sweeper parts diagrams?

Yes, there are various online resources, including forums, repair websites, and instructional videos that can provide guidance and access to parts diagrams.

Find other PDF article:

<https://soc.up.edu.ph/03-page/files?dataid=snC69-2162&title=a-to-z-list-of-careers.pdf>

## [Agri Fab Lawn Sweeper Parts Diagram](#)

### **11 Hotel Terbaik di Dekat Stasiun Kereta Tugu - Agoda**

Stasiun Kereta Tugu bukan hanya tempat transit kereta api, namun juga menjadi tempat transit bus dan taksi. Dari stasiun ini, Anda dapat dengan mudah menuju ke berbagai tempat wisata ...

### **Hotel & Penginapan dekat Stasiun Tugu Yogyakarta - Diskon ...**

Booking hotel terbaik di dekat Stasiun Tugu Yogyakarta, Yogyakarta terlengkap, Harga diskon s.d 30%, Review Asli dan Free Cancellation di Traveloka

### Hotels near Yogyakarta Train Station, Indonesia.

Find hotels near Yogyakarta Train Station, Indonesia online. Good availability and great rates. Book online, pay at the hotel. No reservation costs.

### *Hotel dekat Stasiun Kereta Tugu, Yogyakarta - Trip.com Group*

Temukan hotel terbaik di dekat Stasiun Kereta Tugu di Yogyakarta dengan ulasan, foto, dan peta asli. Pesan melalui Trip.com untuk mendapatkan harga terbaik dan tanpa biaya reservasi.

### 10 Penginapan Dekat Stasiun Tugu Jogja, Dekat dan Murah Loh!

1. Hotel Sakura Yogyakarta Penginapan Dekat Stasiun Tugu Jogja yang pertama adalah Hotel Sakura. Penginapan ini hanya berjarak hanya sekitar 700 meter dari stasiun, sehingga ...

### Hotel Dekat stasiun yogyakarta (yk) - Harga Promo Terbaru

Hotel Horaios Malioboro berlokasi sekitar 300 meter dari Stasiun Kereta Api Tugu, Yogyakarta. Hotel bintang 3 ini menyediakan akomodasi yang modern untuk tujuan bisnis maupun liburan. ...

### 10 Hotel Dekat Stasiun Tugu Yogyakarta dengan Harga Bervariasi

May 8, 2023 · TEMPO.CO, Jakarta - Stasiun Tugu merupakan tempat pemberhentian kereta api utama di Yogyakarta. Banyak wisatawan memilih untuk turun di Stasiun Tugu ketika ...

### *10 Places to Stay Near Tugu Railway Station | Book Hotels*

Looking for a hotel near Tugu Railway Station with 24/7 customer support? Book with Agoda, and get top deals on accommodations in Yogyakarta.

### **Hotel di dekat Stasiun Kereta Tugu di Yogyakarta**

Kami menemukan 710 hotel di dekat Stasiun Kereta Tugu, Yogyakarta mulai Rp 20.649 per malam. Bandingkan penawaran dari ratusan vendor dan dapatkan harga menarik hari ini.

#### **40 Best Hotel near Yogyakarta Tugu Station Disc. up to 30%!**

Find best hotel near Yogyakarta Tugu Station with real review and get great discount on your hotel reservation. Booking hotel online with Traveloka!

#### **Hotel Terbaik Sekitar Stasiun Tugu Yogyakarta**

May 26, 2025 · Hotel sekitar stasiun tugu jogja – Mencari penginapan nyaman di dekat Stasiun Tugu Yogyakarta? Jangan khawatir, pilihan hotel di sekitar stasiun ini sangat beragam, mulai ...

#### **Hotel di dekat Stasiun Yogyakarta / Stasiun Tugu, Indonesia.**

Cari hotel di dekat Stasiun Yogyakarta / Stasiun Tugu, Indonesia secara online. Ketersediaan dan harga yang bagus. Pesan secara online, bayar di hotel. Tanpa biaya pemesanan.

#### Daniel Kellum, Sr., DO, Family Medicine - WellMed

Oct 30, 2024 · Daniel Kellum, Sr., DO is affiliated with WellMed and specializes in Family Medicine in San Antonio, TX

#### Dr. Daniel Kellum, DO, Family Medicine | San Antonio, TX | We...

Dr. Daniel Kellum, DO, is a Family Medicine specialist practicing in San Antonio, TX with 52 years of experience. This provider currently accepts 68 insurance plans ...

#### About Us - Kellum Medical Group

Dr. Daniel H. Kellum, Sr., D.O., F.A.A.F.P received his Medical degree from Kansas City University of Medicine and Biosciences in 1973. He also has a Bachelor of Science ...

#### **DANIEL H KELLUM SR. DO - NPI 1174518625 - Family Medicine in S...**

Sep 12, 2005 · This page provides the complete NPI Profile along with additional information for Daniel Kellum, a primary care provider established in San Antonio, Texas ...

#### Dr. Daniel Kellum, MD - Family Medicine Physician in San Antoni...

Dr. Daniel Kellum, MD is a family medicine physician in San Antonio, TX and has over 50 years of experience in the medical field. He graduated from Kansas City University ...

Explore our comprehensive agri fab lawn sweeper parts diagram to enhance your lawn care. Learn more about each component and keep your equipment running smoothly!

[Back to Home](#)