

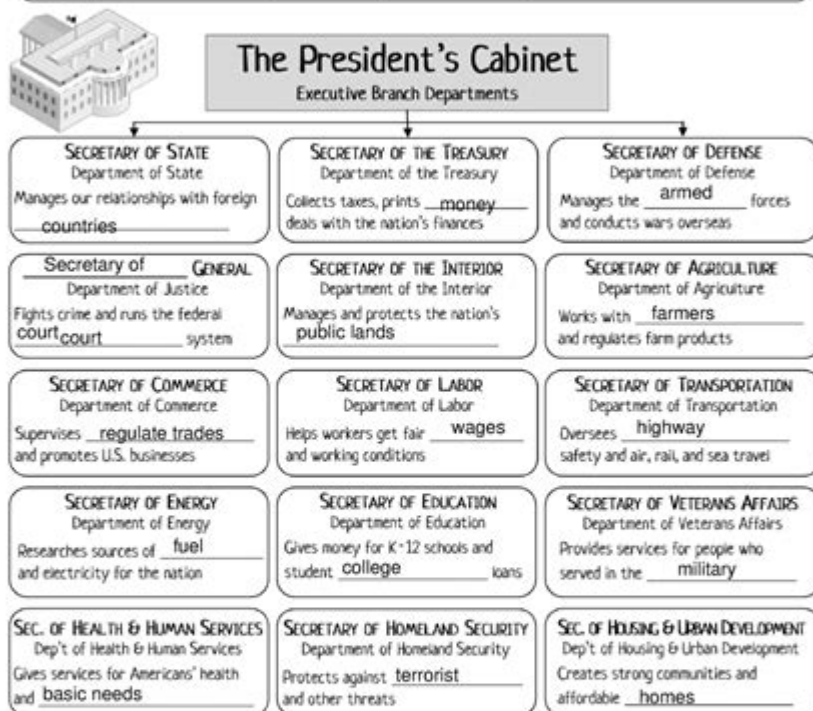
# A Very Big Branch Worksheet

## A Very Big Branch

Name: Anthony G

**A. Cabinet Departments.** Use the word bank to fill in the missing words from the graphic organizer:

Attorney armed basic needs college highway countries farmers  
military homes money fuel public lands wages terrorists trade court



**B. Who Said That?** Identify which secretary might give the following advice or information:

- |                                                                            |                                  |
|----------------------------------------------------------------------------|----------------------------------|
| 1) "Mr. President, we need to invest in more solar electricity."           | Sec. of <u>energy</u>            |
| 2) "Mr. President, we saw a decrease in highway deaths this year."         | Sec. of <u>transportation</u>    |
| 3) "Mr. President, agents intercepted a terrorist threat this morning."    | Sec. of <u>homeland security</u> |
| 4) "Mr. President, it's time to take the penny out of circulation."        | Sec. of <u>treasury</u>          |
| 5) "Mr. President, we need to combat bark beetles in the national forest." | Sec. of <u>interior</u>          |

A very big branch worksheet serves as an essential tool for educators, students, and professionals alike to explore complex concepts and organize information systematically. In the realm of education, worksheets help reinforce learning through practice and application. A particularly comprehensive worksheet, termed as a "very big branch worksheet," is characterized by its extensive scope and depth, offering a multifaceted approach to a topic. This article delves into the structure, benefits, and applications of a very big branch worksheet, providing guidance on how to create and utilize one effectively.

# Understanding the Concept of a Very Big Branch Worksheet

A very big branch worksheet is a detailed and expansive document designed to cover a wide range of subtopics related to a central theme. It typically includes various sections that allow for in-depth exploration of the subject matter. These worksheets can be utilized across different educational levels and subjects, making them versatile tools in both classroom and individual learning settings.

## Key Characteristics

1. **Comprehensive Coverage:** The worksheet encompasses multiple aspects of a topic, ensuring that no critical element is overlooked.
2. **Structured Format:** The organization of content is logical, often breaking down complex ideas into manageable sections.
3. **Interactive Elements:** Many worksheets provide spaces for responses, reflections, and exercises that engage the user actively.
4. **Visual Aids:** Diagrams, charts, and illustrations may be included to enhance understanding and retention of information.

## The Importance of a Very Big Branch Worksheet

Utilizing a very big branch worksheet offers several advantages for learners and educators alike. The depth and breadth of information facilitate a better understanding of complex topics, making them invaluable in educational settings.

## Benefits for Students

- Enhanced Learning: By breaking down information into smaller components, students can grasp intricate subjects more effectively.
- Encouragement of Critical Thinking: The structured nature of the worksheet prompts students to analyze and synthesize information, fostering higher-order thinking skills.
- Improved Retention: Engaging with content through various activities boosts memory retention and recall abilities.
- Self-Paced Learning: Students can work through the worksheet at their own pace, allowing for personalized learning experiences.

## **Benefits for Educators**

- Assessment Tool: Educators can assess students' understanding of a topic based on their responses and engagement with the worksheet.
- Resource for Differentiation: The extensive nature of the worksheet allows educators to tailor learning experiences for students with varying abilities.
- Facilitator of Discussions: Worksheets can serve as a basis for group discussions or collaborative learning, enhancing classroom dynamics.

## **Components of a Very Big Branch Worksheet**

A well-structured very big branch worksheet typically consists of several key components, each serving a specific purpose in facilitating learning.

### **1. Title and Objective**

At the top of the worksheet, a clear title and objective statement should outline the central topic and the goals of the worksheet. This sets the stage for what students can expect to learn and accomplish.

## 2. Main Topic and Subtopics

The core of the worksheet revolves around a main topic, which is then divided into several subtopics. Each subtopic should be clearly labeled and provide a brief description or context.

Example format:

- Main Topic: Renewable Energy
- Subtopic 1: Solar Energy
- Subtopic 2: Wind Energy
- Subtopic 3: Hydropower

## 3. Questions and Exercises

Following the subtopics, a series of questions and exercises should be presented. These can include multiple-choice questions, short answer prompts, or more complex problem-solving tasks that encourage deeper engagement with the material.

## 4. Visual Representations

Incorporating visual aids such as charts, graphs, and diagrams can significantly enhance comprehension. These elements should complement the text and provide additional insights into the subject matter.

## 5. Reflection Section

A dedicated space for students to reflect on what they have learned is crucial. Prompts can guide

them to think critically about the information and its implications in real-world contexts.

## **6. Summary and Conclusion**

The worksheet should conclude with a summary that encapsulates the key points addressed in the document. This reinforces learning and aids in retention.

## **Creating a Very Big Branch Worksheet**

Developing a very big branch worksheet requires careful planning and consideration. Here are some steps to create an effective worksheet:

### **1. Choose a Central Topic**

Select a broad topic that can be subdivided into various subtopics. Ensure that the topic aligns with educational standards and goals.

### **2. Research Subtopics**

Conduct thorough research on the identified subtopics. Gather relevant information, data, and examples that will enrich the content.

### **3. Organize Information**

Structure the information logically. Use headings and bullet points to create a clear and concise layout that is easy to navigate.

## **4. Design Engaging Activities**

Incorporate a variety of activities that cater to different learning styles. Include visual elements, interactive questions, and collaborative tasks to keep students engaged.

## **5. Review and Revise**

Before finalizing the worksheet, review it for clarity, accuracy, and relevance. Seek feedback from colleagues or peers to ensure that it meets educational objectives.

# **Applications of a Very Big Branch Worksheet**

Very big branch worksheets can be applied in various educational contexts, making them versatile tools for learning.

## **1. Classroom Settings**

In a classroom, teachers can utilize these worksheets for group activities, homework assignments, or as part of assessment strategies. They promote collaborative learning and facilitate discussions among students.

## 2. Homeschooling

For homeschooling parents, a very big branch worksheet can serve as a comprehensive resource to guide their children's learning. It helps structure lessons and provides a variety of activities to reinforce understanding.

## 3. Professional Development

In professional settings, these worksheets can be used for training sessions, workshops, or team-building exercises. They allow participants to explore complex topics and develop critical skills collaboratively.

## Conclusion

A very big branch worksheet is a powerful educational tool that enhances learning through comprehensive coverage of topics, structured formats, and interactive elements. By providing a systematic approach to exploring complex subjects, these worksheets facilitate critical thinking, improve retention, and cater to diverse learning styles. Whether in classrooms, homeschooling environments, or professional development settings, the implementation of a very big branch worksheet can lead to enriched learning experiences and greater understanding of intricate concepts. As educators and learners alike embrace this comprehensive approach, the potential for knowledge acquisition and application expands significantly, paving the way for deeper intellectual engagement and mastery of subjects.

## Frequently Asked Questions

## **What is a 'very big branch worksheet' and what is its purpose?**

A 'very big branch worksheet' is a comprehensive educational tool used to organize and visualize information about a specific topic or subject. Its purpose is to help students break down complex concepts into manageable parts, facilitating better understanding and retention.

## **How can educators effectively implement a 'very big branch worksheet' in their lessons?**

Educators can implement a 'very big branch worksheet' by introducing it during discussions of a new topic, allowing students to collaboratively fill it out, and using it as a reference point for projects or assessments. This interactive approach encourages engagement and critical thinking.

## **What subjects are best suited for using a 'very big branch worksheet'?**

Subjects that benefit from a 'very big branch worksheet' include science, history, literature, and any topic that involves categorization or complex relationships. It's especially useful for visual learners who thrive on organizing information graphically.

## **Are there any digital tools available for creating 'very big branch worksheets'?**

Yes, there are several digital tools available, such as MindMeister, Lucidchart, and Canva, which allow users to create visually appealing 'very big branch worksheets'. These platforms often offer templates and collaborative features to enhance the learning experience.

## **What are some benefits of using a 'very big branch worksheet' for students?**

Benefits include improved organization of thoughts, enhanced visual learning, better retention of information, and the ability to see connections between concepts. This worksheet also promotes collaborative learning and discussion among students.



## Can 'very big branch worksheets' be used for group projects?

Absolutely! 'Very big branch worksheets' are ideal for group projects as they promote teamwork, enable students to share ideas, and help in organizing collective research or findings in a coherent manner, making it easier to present their work.

Find other PDF article:

<https://soc.up.edu.ph/61-page/pdf?trackid=oig88-2502&title=the-science-of-golf.pdf>

## [A Very Big Branch Worksheet](#)

### **Quant ELSS Tax Saver Fund Direct-Growth - ET Money**

4 days ago · Quant ELSS Tax Saver Fund: Check latest NAV, expense ratio, SIP & lumpsum returns, portfolio details, and peer comparison. Invest easily via ET Money.

#### *Quant ELSS Tax Saver Fund, Current NAV, Ratings and ...*

4 days ago · Quant ELSS Tax Saver Fund – check current NAV, performance, historical returns, SIP options, and ratings. Get the latest insights and start investing today!

#### *Quant ELSS Tax Saver Fund-Growth - The Economic Times*

4 days ago · Quant ELSS Tax Saver Fund: Get latest details for Quant ELSS Tax Saver Fund including key performance data, NAV, AUM, portfolio holdings, and fund highlights. Stay updated ...

#### *Quant ELSS Tax Saver Fund Growth - NAV, Review, Portfolio, Exit ...*

Jul 15, 2025 · Invest in Quant ELSS Tax Saver Fund Growth - Get latest NAV, Returns, Fund Overview, Review, Expert Ratings, Portfolio Analysis, Peer Comparison, Exit Load at Choice.

#### Quant ELSS Tax Saver Fund - Growth - Direct Plan

Quant ELSS Tax Saver Fund Growth Direct Plan - Analysis enables you to decide, if it is a right Fund for you based on the Fund Performance, Portfolio, Rolling Returns, Latest NAV ₹410.27, Expense ...

### **Quant Elss Tax Saver Fund NAV, Returns & Ratings [18-Jul-25]**

Jul 18, 2025 · The quant Elss Tax Saver Fund has delivered a mixed performance across various time horizons, showcasing both strengths and challenges when compared to its ELSS (Tax ...

### **Quant ELSS Tax Saver Fund Direct Growth**

Quant ELSS Tax Saver Fund Direct Growth - Get latest NAV, SIP Returns & Rankings, Ratings, Fund Performance, Portfolio, Expense Ratio, Holding Analysis, and Peers.

#### *Quant ELSS Tax Saver Growth Option Direct Plan - ClearTax*

Jul 20, 2025 · Detailed analysis & complete track record of Quant ELSS Tax Saver Growth Option Direct Plan. Get latest updates on, Dividends, Returns, Risks, Portfolio & Exit Load of this Hybrid ...

### *Quant ELSS Tax Saver Fund - Growth - Moneycontrol*

These mutual funds maintain portfolio largely in the stocks. However you cannot sell these units for 3 years from purchase date. You can save taxes by showing investment as deduction under 80c.

### Quant ELSS Tax Saver Fund Direct Growth - INDmoney

4 days ago · Quant ELSS Tax Saver Fund – Get latest NAV, returns, benchmark performance, fund rank, peer analysis, AUM changes, key insights & top holdings. Invest at zero commission with ...

### *pharmacy services - Meijer*

Walk in, no appointments needed. Click here if you want to schedule an appointment. Meijer Pharmacists and technicians can administer a wide range of CDC-recommended vaccines for your family and bill your insurance company directly. Let Meijer help keep your family healthy.

### **Meijer Rx Home**

Manage your prescriptions and access Meijer Pharmacy services online.

### **Meijer Pharmacy**

Manage your prescriptions, refills, and health services conveniently at Meijer Pharmacy.

### **Refill Request - rx.meijer.com**

Request prescription refills easily online with Meijer Pharmacy.

### Pharmacy - Meijer

Meijer pharmacy now offers Nutrition by Meijer. With one-on-one, virtual consultations, we can help your family with food recommendations, meal planning, dietary restrictions, chronic health conditions and much more.

### **Fail page - rx.meijer.com**

Something Went Wrong We weren't able to process your request. Please try again later or contact your Meijer Pharmacy. We'll take you back to the main page in 5 seconds.

### **Store Locator - Meijer**

See all offer details. Restrictions apply. Pricing, promotions and availability may vary by location and on Meijer.com

### *ExpressCheckout - Meijer*

Access ExpressCheckout at Meijer for convenient and secure pharmacy services, including prescription management and more.

### Patient Lookup - rx.meijer.com

Access patient information and manage prescriptions online with Meijer Pharmacy.

### **SmartRefill - rx.meijer.com**

SmartRefill - rx.meijer.com ... SmartRefill

Explore our 'A Very Big Branch Worksheet' designed for engaging learning! Perfect for educators and students alike. Discover how to enhance your lessons today!

[Back to Home](#)