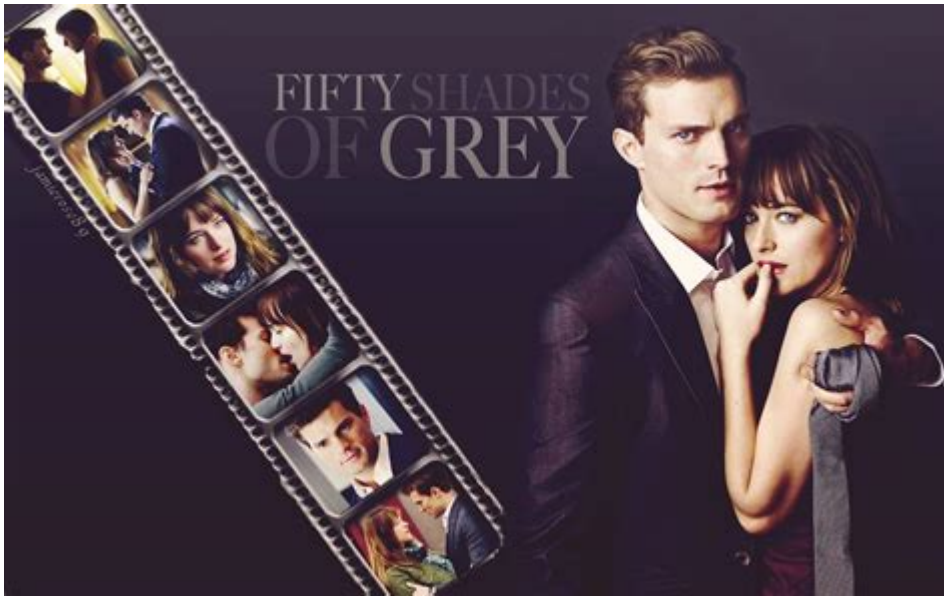


A Page From 50 Shades Of Grey



50 Shades of Grey has captivated readers around the world with its intricate narrative and compelling characters. The book, penned by E.L. James, explores themes of love, desire, and the complexities of human relationships. One particular page from this provocative novel vividly illustrates the intensity of the protagonist's emotions and the dynamic between the leading characters, Anastasia Steele and Christian Grey. This article delves into the significance of that page, analyzing its themes, character development, and the broader implications in the context of the story.

The Context of 50 Shades of Grey

Before we dissect a particular page, it's essential to understand the context of the novel. "50 Shades of Grey" follows the journey of Anastasia Steele, a college graduate who becomes involved with the enigmatic billionaire Christian Grey. Their relationship is characterized by a blend of romance and BDSM, raising questions about consent, power dynamics, and emotional vulnerability.

The Setting and Tone

The setting of "50 Shades of Grey" plays a crucial role in shaping the narrative. The book is predominantly set in Seattle, Washington, where the lush landscapes and urban environment serve as a backdrop for the characters' emotional struggles. The tone oscillates between romantic and tense, mirroring the complexities of Anastasia and Christian's relationship.

Character Dynamics

- Anastasia Steele: A naive yet strong-willed protagonist who is drawn into a world of passion and control. Her character evolves significantly throughout the story, demonstrating resilience and a quest for self-discovery.
- Christian Grey: A charismatic and wealthy businessman with a troubled past. His character embodies the conflict between desire and emotional repression, making him both alluring and intimidating.

The Significance of a Key Page

One of the most poignant pages in "50 Shades of Grey" encapsulates the emotional turmoil experienced by Anastasia as she navigates her feelings for Christian. This page serves as a turning point in the narrative, revealing vulnerabilities and deepening the reader's understanding of both characters.

Emotional Complexity

On this particular page, Anastasia grapples with her conflicting feelings towards Christian. The text is rich with emotional nuance, showcasing her internal struggle as she tries to reconcile her attraction to him with the fear of his controlling behavior.

- Vulnerability: The page highlights Anastasia's vulnerability, as she reflects on her insecurities and the intensity of her feelings. This moment resonates with readers who have experienced similar dilemmas in their own relationships.
- Desire vs. Fear: The tension between desire and fear is palpable, illustrating the complexities of their bond. This duality is a recurring theme throughout the novel, inviting readers to explore the nature of passion and its potential consequences.

Symbolism and Imagery

The language used on this page is rich in symbolism and imagery, enhancing the emotional resonance of the scene.

- Metaphors: E.L. James employs metaphors that evoke the intensity of desire, likening Anastasia's feelings to a fire that is both comforting and dangerous.
- Imagery: The imagery creates vivid mental pictures that allow readers to immerse themselves in the moment. The descriptions of physical sensations and surroundings contribute to the overall mood, drawing readers deeper into the narrative.

Thematic Exploration

The themes explored on this key page are representative of the larger motifs present throughout "50 Shades of Grey."

Consent and Control

At the heart of the narrative lies a complex exploration of consent and control. Christian's dominant personality often leads to moments where the boundaries of consent are tested. This page

encapsulates that struggle, as Anastasia contemplates the implications of entering a relationship that challenges her understanding of autonomy.

Self-Discovery

Anastasia's journey is one of self-discovery, and this page represents a critical moment in her evolution. As she confronts her feelings for Christian, she begins to understand her desires and limits. This theme of self-discovery is central to the narrative, encouraging readers to reflect on their own journeys of personal growth.

The Impact of 50 Shades of Grey on Popular Culture

The release of "50 Shades of Grey" sparked widespread discussion about its themes, characters, and portrayal of BDSM culture. The book has had a profound impact on popular culture, leading to:

- Increased Conversations about BDSM: The novel introduced many readers to the complexities of BDSM relationships, prompting discussions about consent, safety, and mutual respect.
- A New Wave of Romance Novels: Following its success, a surge of romance novels featuring similar themes emerged, showcasing the influence of E.L. James's writing on the genre.
- Film Adaptation and Beyond: The book's popularity led to a film adaptation that brought the story to a broader audience, further embedding it in contemporary culture.

Conclusion

The page we explored from "50 Shades of Grey" serves as a microcosm of the book's broader themes and character dynamics. Through vivid imagery and emotional depth, E.L. James invites readers to engage with the complexities of love, desire, and self-discovery. As we reflect on this pivotal moment,

it becomes evident that "50 Shades of Grey" is more than just a love story; it is a nuanced exploration of human relationships that continues to resonate with audiences today. The novel's impact on popular culture underscores its significance, making it a timeless piece that encourages ongoing dialogue about the nature of intimacy and connection.

Frequently Asked Questions

What are the main themes explored in 'Fifty Shades of Grey'?

The main themes include BDSM relationships, power dynamics, love and intimacy, consent, and personal growth.

How does the character of Anastasia Steele evolve throughout the book?

Anastasia evolves from a naive college student to a more confident individual who explores her desires and learns about her own boundaries.

What role does consent play in the relationship between Christian Grey and Anastasia Steele?

Consent is a critical theme, as the characters navigate their boundaries and establish safe words, emphasizing the importance of mutual agreement in BDSM practices.

How does the writing style of 'Fifty Shades of Grey' contribute to its popularity?

The writing style is accessible and engaging, with a first-person perspective that allows readers to connect intimately with Anastasia's thoughts and feelings.

What impact did 'Fifty Shades of Grey' have on the portrayal of sexuality in popular culture?

The book sparked conversations about sexuality, BDSM, and women's desires, challenging societal norms and leading to a broader acceptance of diverse sexual relationships in media.

Find other PDF article:

<https://soc.up.edu.ph/56-quote/pdf?trackid=ZBM49-3783&title=study-guide-section-1-bacteria-answers.pdf>

A Page From 50 Shades Of Grey

Reset password - Google Help

Go to the password assistance page. Enter your Google Account email address Type the the words in the distorted picture. Choose how to get back into your account. In order to keep your account secure, you can't change your password to a ...

Download Chrome - Google Help

On your iPhone or iPad, open App Store. In the search bar, enter Chrome. Tap Get. To install, follow the on-screen instructions. If prompted, enter your Apple ID password. To start browsing, tap Open. To open Chrome from your Home screen, tap Chrome .

Use Google Drive for desktop - Google Drive Help

To easily manage and share content across all of your devices and the cloud, use Google's desktop sync client: Drive for desktop. If you edit, delete or move a file on the Cloud, the same change happens on your computer and devices, and vice versa. In this way, your files are always up to date and can be accessed from any device. Open files stored on the Cloud directly on ...

Create a Google Account - Computer - Google Account Help

Important: When you create a Google Account for your business, you can turn business personalization on. A business account also makes it easier to set up Google Business Profile, which helps improve your business visibility and manage your online information. When you create a Google Account, we ask for some personal info. By providing accurate info, you can ...

Se connecter à Gmail - Ordinateur - Aide Gmail - Google Help

Se connecter à Gmail Conseil : Si vous vous connectez à un ordinateur public, pensez à vous déconnecter avant de quitter l'ordinateur. Découvrez comment vous connecter sur un appareil qui n'est pas le vôtre.

Sign in to Gmail - Computer - Gmail Help - Google Help

On your computer, go to Gmail. Enter your Google Account email or phone number and password. If information is already filled in and you have to sign in to a different account, click Use another

account. If you get a page that describes Gmail instead of the sign-in page, at the top right of the page, click Sign in.

Install and manage extensions - Chrome Web Store Help

For additional protection when you install a new extension from the Chrome Web Store, you can use Safe Browsing's Enhanced protection. If you enable Enhanced protection in Chrome, it warns you when an extension you want to install isn't trusted. Extensions are considered trusted when they're built by a developer who follows the Chrome Web Store Developer Program Policies. ...

Download and install Google Chrome

How to install Chrome Important: Before you download, you can check if Chrome supports your operating system and other system requirements.

Make Google your default search engine - Google Search Help

To get results from Google each time you search, you can make Google your default search engine. Set Google as your default on your browser If your browser isn't listed below, check its help resource

Create a Gmail account - Gmail Help - Google Help

Important: Before you set up a new Gmail account, make sure to sign out of your current Gmail account. Learn how to sign out of Gmail. From your device, go to the Google Account sign in page. Click Create account. In the drop down, select if the account is for your: Personal use Child Work or business To set up your account, follow the steps on the screen.

Reset password - Google Help

Go to the password assistance page. Enter your Google Account email address Type the the words in the distorted picture. Choose how to get back into your account. In order to keep your ...

Download Chrome - Google Help

On your iPhone or iPad, open App Store. In the search bar, enter Chrome. Tap Get. To install, follow the on-screen instructions. If prompted, enter your Apple ID password. To start ...

Use Google Drive for desktop - Google Drive Help

To easily manage and share content across all of your devices and the cloud, use Google's desktop sync client: Drive for desktop. If you edit, delete or move a file on the Cloud, the same ...

Create a Google Account - Computer - Google Account Help

Important: When you create a Google Account for your business, you can turn business personalization on. A business account also makes it easier to set up Google Business Profile, ...

Se connecter à Gmail - Ordinateur - Aide Gmail - Google Help

Se connecter à Gmail Conseil : Si vous vous connectez à un ordinateur public, pensez à vous déconnecter avant de quitter l'ordinateur. Découvrez comment vous connecter sur un appareil ...

Sign in to Gmail - Computer - Gmail Help - Google Help

On your computer, go to Gmail. Enter your Google Account email or phone number and password. If information is already filled in and you have to sign in to a different account, click ...

Install and manage extensions - Chrome Web Store Help

For additional protection when you install a new extension from the Chrome Web Store, you can use Safe Browsing's Enhanced protection. If you enable Enhanced protection in Chrome, it ...

Download and install Google Chrome

How to install Chrome Important: Before you download, you can check if Chrome supports your operating system and other system requirements.

Make Google your default search engine - Google Search Help

To get results from Google each time you search, you can make Google your default search engine. Set Google as your default on your browser If your browser isn't listed below, check its ...

Create a Gmail account - Gmail Help - Google Help

Important: Before you set up a new Gmail account, make sure to sign out of your current Gmail account. Learn how to sign out of Gmail. From your device, go to the Google Account sign in ...

Dive into a captivating analysis of a page from 50 Shades of Grey

[Back to Home](#)