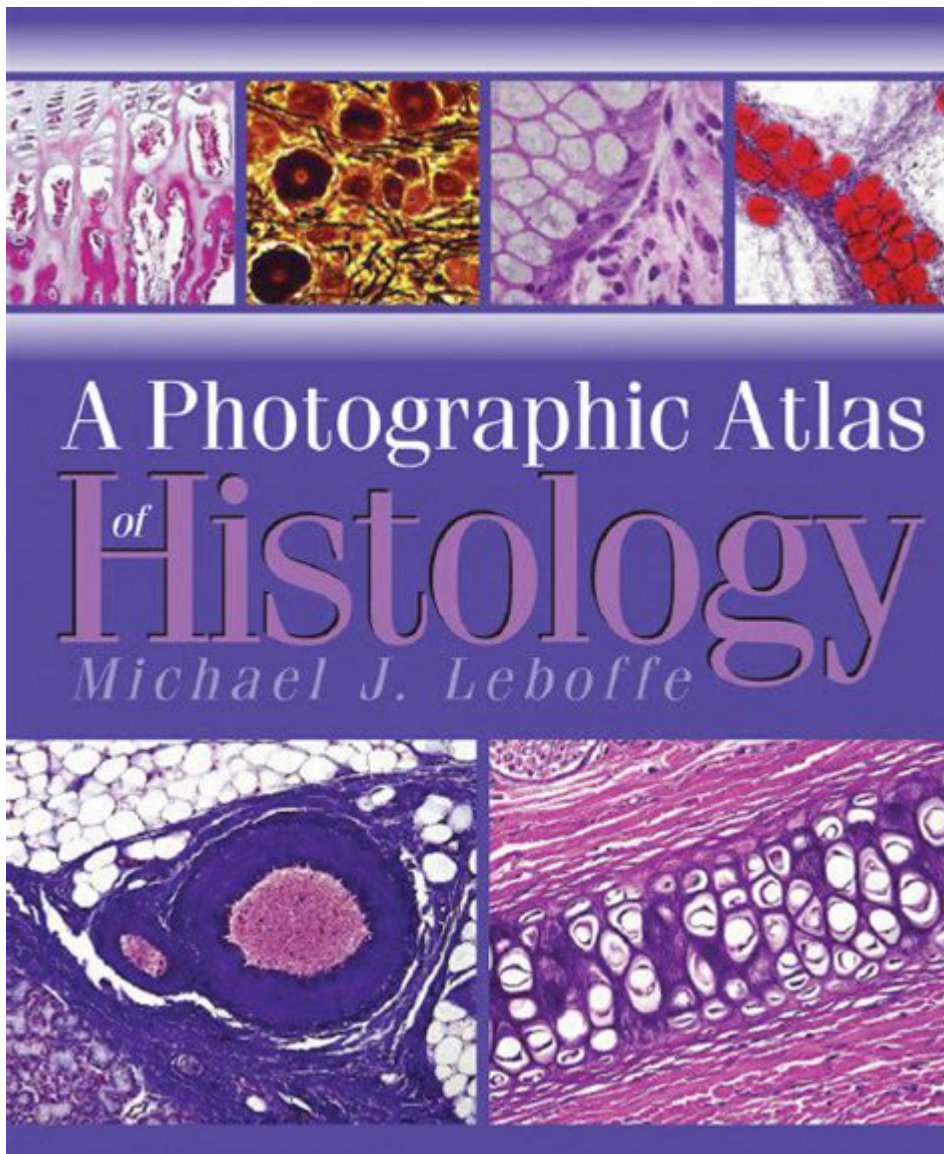


# A Photographic Atlas Of Histology



A photographic atlas of histology serves as a crucial resource for students, educators, and professionals in the biological and medical sciences. Histology, the microscopic study of tissue structures and their functions, is essential for understanding the complex organization of organisms. A comprehensive photographic atlas of histology provides high-quality images that facilitate learning and comprehension of tissue morphology, pathology, and the relationships between structure and function. This article delves into the significance of a photographic atlas of histology, its components, applications, and advantages.

## The Importance of a Photographic Atlas of Histology

Histology is foundational for several scientific disciplines, including medicine, biology, and veterinary science. A photographic atlas is an invaluable tool for:

1. Visual Learning: Many students and professionals are visual learners. High-quality photographs

help in retaining knowledge about tissue structures.

2. **Diagnostic Applications:** In pathology, accurate identification of tissue samples is critical for diagnosing diseases. A photographic atlas aids pathologists in recognizing normal versus abnormal tissue.

3. **Research:** Histological studies often support research in cancer biology, developmental biology, and neurobiology. A photographic atlas can assist researchers in comparing samples.

4. **Educational Aid:** For educators, a photographic atlas provides a visual reference that enhances lecture materials, making complex concepts more accessible.

## **Components of a Photographic Atlas of Histology**

A well-structured photographic atlas of histology typically includes several key components that enhance its educational utility:

### **1. High-Quality Images**

The cornerstone of any photographic atlas is its images. These should be:

- **Microscopically Accurate:** Images must be taken with high-resolution microscopes to provide clear and detailed views of tissues.
- **Variety of Stains:** Different staining techniques (e.g., Hematoxylin and Eosin, Masson's Trichrome, Immunohistochemistry) highlight various tissue components, making it easier to differentiate structures.
- **Annotated:** Labels and descriptions enhance understanding. Annotated images can point out specific cells, structures, and their functions.

### **2. Tissue Classification**

A comprehensive atlas often organizes tissues into categories based on their function and type:

- **Epithelial Tissue:** Covers surfaces and lines cavities. Includes subtypes like simple squamous, cuboidal, and columnar epithelium.
- **Connective Tissue:** Provides support and structure. Includes bone, blood, adipose tissue, and cartilage.
- **Muscle Tissue:** Responsible for movement. Includes skeletal, cardiac, and smooth muscle.
- **Nervous Tissue:** Composed of neurons and glial cells, this tissue is vital for signal transmission.

### **3. Pathological Examples**

In addition to normal histology, a photographic atlas often includes pathological images to illustrate diseases:

- **Cancerous Tissues:** Features of malignancy, such as altered cell morphology and increased mitotic

activity.

- Inflammatory Conditions: Examples of tissues affected by inflammation, such as chronic gastritis or rheumatoid arthritis.
- Degenerative Diseases: Images demonstrating changes in tissues due to degenerative processes, like Alzheimer's disease in nervous tissue.

## **Applications of a Photographic Atlas of Histology**

The applications of a photographic atlas of histology are diverse and extend across various fields:

### **1. Education**

In educational settings, a photographic atlas is an essential tool for:

- Medical and Dental Schools: Used in histology courses to help students identify tissue types and understand their functions.
- Biology Courses: Emphasizes the structure-function relationship in organisms.
- Veterinary Programs: Assists in the study of animal histology, which is crucial for veterinary pathology.

### **2. Clinical Pathology**

In clinical pathology, a photographic atlas aids:

- Pathologists: By providing a reference for diagnosing diseases through tissue examination.
- Surgeons: To understand the normal histological architecture of tissues they may encounter during procedures.

### **3. Research and Development**

Researchers utilize photographic atlases for:

- Comparative Studies: To contrast normal and pathological samples in their research.
- Histological Techniques: Understanding different staining methods and their applications in research.

### **4. Public Health and Epidemiology**

Histology plays a critical role in public health studies, and photographic atlases can help with:

- Identifying Disease Patterns: Through the examination of tissue samples from populations.

- Training Public Health Professionals: In recognizing histological features associated with diseases in epidemiological studies.

## **Advantages of Using a Photographic Atlas of Histology**

There are numerous advantages to utilizing a photographic atlas of histology:

### **1. Accessibility**

- Easy Reference: High-quality photographic atlases provide quick access to a wide range of histological images and information.
- Digital Availability: Many atlases are now available online, making them accessible to students and professionals worldwide.

### **2. Enhanced Understanding**

- Visual Context: Photographs provide context that textual descriptions often lack, aiding in the retention of complex information.
- Integration of Concepts: By visually linking structure and function, learners can better understand the material.

### **3. Comprehensive Learning Tool**

- Supplemental Resource: A photographic atlas complements textbooks and lectures, providing additional visual aids that enhance the learning experience.
- Diverse Learning Styles: It caters to various learning preferences, making histology education more inclusive.

## **Conclusion**

A photographic atlas of histology is an essential resource that significantly enhances the learning and understanding of tissue structures and their functions. By providing high-quality images, organized classifications, and pathological examples, it serves as a critical educational tool for students, educators, and professionals alike. Its applications span across education, clinical pathology, research, and public health, proving its versatility and importance in the biological sciences. As technology advances, the integration of digital resources will further enrich the experience of learning histology, making it even more accessible and effective for future generations.

# Frequently Asked Questions

## What is a photographic atlas of histology?

A photographic atlas of histology is a visual reference book that contains high-quality images of various tissue types and cellular structures, aiding in the study and understanding of microscopic anatomy.

## How can a photographic atlas of histology be beneficial for students?

It helps students visualize and better understand complex histological structures, enhances their ability to identify tissues under a microscope, and serves as a comprehensive study tool for courses in biology and medicine.

## What types of tissues are commonly included in a photographic atlas of histology?

Commonly included tissues are epithelial, connective, muscle, and nervous tissues, along with various organs such as the heart, liver, and lungs, showcasing their unique cellular architecture.

## Are there digital versions of photographic atlases of histology available?

Yes, many photographic atlases of histology are now available in digital formats, offering interactive features, searchable content, and the ability to zoom in on high-resolution images.

## How does a photographic atlas of histology compare to traditional textbooks?

While traditional textbooks provide detailed descriptions and explanations, a photographic atlas focuses on visual representation, making it easier for learners to correlate text with images and understand histological concepts.

## What should one look for when choosing a photographic atlas of histology?

Look for an atlas with high-resolution images, clear labeling, comprehensive coverage of tissues and organs, and additional resources like descriptions or quizzes to enhance the learning experience.

Find other PDF article:

<https://soc.up.edu.ph/51-grid/Book?docid=RKm85-1673&title=riddle-school-transfer-2-walkthrough.pdf>

# [A Photographic Atlas Of Histology](#)

## **THE 10 BEST Restaurants in Seattle (Updated July 2025)**

Restaurants ranked according to page views, reviews and individual attributes such as price range, cuisine and location, as well as aggregated Tripadvisor data comparing user interactions with all ...

### *The 20 Best Restaurants In Seattle According To Locals*

Jan 12, 2024 · Seattleites know where to eat. Here are the 20 best restaurants in Seattle according to the people who live here.

## **The 38 Best Restaurants in Seattle**

Jul 8, 2025 · Some of the main factors to consider are the type of food, price point, neighborhood, and occasion. That's why Eater's map of the 38 best restaurants in Seattle exists.

### THE BEST 10 RESTAURANTS in SEATTLE, WA - Updated 2025

Best Restaurants in Seattle, WA - The Pink Door, Bangrak Market, Ludi's Restaurant & Lounge, Toulouse Petit Kitchen & Lounge, Biscuit Bitch, Biang Biang Noodles, Von's 1000 Spirits, Kedai ...

## **50 Best Restaurants in Seattle**

Oct 23, 2024 · This is the definitive list of the best restaurants in Seattle. From seafood to steakhouses, the list of the best is here.

### 20 Best Restaurants in Seattle, From Takeout to Tasting Menus

Jan 8, 2024 · Our top recommendations for the best restaurants in Seattle, Washington, with pictures, reviews, and details.

### The best restaurants in Seattle / Eastern Washington

Jul 8, 2011 · Find the best and most fabulous restaurants in Seattle / Eastern Washington. Explore 8,460 top-rated options, read reviews, view photos, and book your table with OpenTable today.

### Best Restaurants in Seattle, Washington - Mapquest

Find the best restaurants around Seattle, Washington and get detailed driving directions with road conditions, live traffic updates, and reviews.

## **11 Best Restaurants in Seattle to Check Out Right Now**

May 1, 2025 · From top-rated establishments near Pike Place Market to favorite neighborhood gems, nothing is off-limits. I'm a Seattle transplant who has traveled the world for over a decade ...

### 20 Best Restaurants in Seattle, WA [2025 Updated]

Nov 27, 2022 · Seattle is known as one of the best foodie cities in the United States. And, although Seattle is well known for its impeccable seafood, the city has an abundance of other cuisines that ...

## **Pregnancy symptoms and early signs of pregnancy in weeks 1-8**

May 6, 2025 · Some early signs of pregnancy may show up around the time you've missed a period – or a week or two before or after. Pregnancy symptoms are different for every woman, and they can even be different from one pregnancy to the next.

## **Your Pregnancy Symptoms Week by Week - Parents**

Aug 22, 2024 · Check out this week-by-week pregnancy symptom timeline so you know what to

expect while carrying a baby.

### **Early Pregnancy Symptoms: 15 Signs and Timeline - Healthline**

Nov 25, 2024 · Though it may sound odd, your first week of pregnancy is based on the date of your last menstrual period. Your last menstrual period is considered week 1 of pregnancy, ...

### *10 Early Signs of Pregnancy - Johns Hopkins Medicine*

When do pregnancy symptoms start? For most people, the four- to six-week mark, or one to two weeks after the first missed period, is when someone might begin to experience early symptoms associated with pregnancy.

### *When do pregnancy symptoms start? Expert thoughts on morning sickness*

May 20, 2025 · Pregnancy (or "morning sickness") symptoms can begin to show within four to eight weeks, experts say. Symptoms including nausea, fatigue, moodiness, breast tenderness, light bleeding and mild...

Explore the essential guide to 'A Photographic Atlas of Histology.' Enhance your understanding of tissue structures—learn more about this vital resource today!

[Back to Home](#)