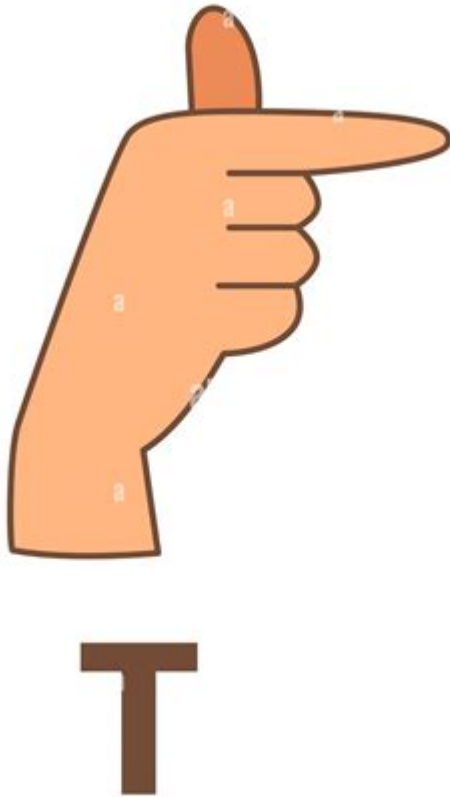


A T In Sign Language



alamy

Image ID: 2PND548
www.alamy.com

A T in Sign Language plays a crucial role in communication for the deaf and hard of hearing communities. Sign language is a visual language that uses hand shapes, facial expressions, and body movements to convey messages. Each letter of the alphabet has a corresponding sign, and understanding these signs is essential for effective communication. In this article, we will explore the significance of the letter "T" in American Sign Language (ASL), its formation, variations, and its role in broader communication.

Understanding American Sign Language (ASL)

American Sign Language is a complete, natural language that has its own grammar and syntax. It is not merely a signed version of English but rather a unique language with its own structure. ASL is primarily used in the United States and parts of Canada, and it has its own set of signs for words, phrases, and letters.

The Importance of Fingerspelling

Fingerspelling is an integral part of ASL, used to represent individual letters of the alphabet. It is particularly useful for spelling out names, technical terms, or words that do not have a specific sign. Each letter in ASL has a distinct handshape, and the letter "T" has its own unique form.

The Sign for "T"

The sign for "T" in ASL is straightforward yet essential for fingerspelling and building vocabulary. To create the sign for "T," follow these steps:

1. Handshape: Start with your dominant hand.
2. Position: Make a fist with your hand.
3. Thumb Placement: Tuck your thumb in front of your index finger, resting it against the side of the index finger.
4. Orientation: Hold your hand upright, with the palm facing outward, so that the letter "T" is clearly visible to the person you are communicating with.

This simple handshape is the foundation for constructing words that begin with the letter "T" as well as for fingerspelling names and other words.

Practical Application of "T" in Communication

The letter "T" is often used in various contexts, and knowing how to sign it can enhance communication. Here are some practical applications:

- Fingerspelling Names: When introducing someone whose name starts with "T," fingerspelling is essential. For example, "Tina" would be spelled out as "T-I-N-A."
- Technical Terms: In various fields such as science, technology, and medicine, many technical terms begin with "T." Understanding the sign helps in academic or professional discussions.
- Everyday Vocabulary: Numerous everyday words start with "T," such as "table," "tree," or "time." Knowing the sign for "T" aids in constructing these words.

Variations of the Sign for "T"

While the sign for "T" is relatively consistent in ASL, there may be slight variations depending on regional dialects or the individual signer's style. However, the fundamental handshape remains the same.

Regional Dialects

Just as spoken languages have dialects, so does ASL. Certain regions may have their variations for signing "T," but the core concept remains intact. It is essential to be aware of these differences if you are communicating with a diverse group of signers.

Learning ASL and the Letter "T"

To effectively learn ASL and the sign for "T," it is beneficial to immerse yourself in the language through various methods.

Resources for Learning ASL

1. Online Courses: Websites such as ASL University and other platforms offer comprehensive courses.
2. YouTube Channels: Many educators post tutorials and lessons on signing different letters and words.
3. Community Classes: Local community centers often hold ASL classes. Engaging with others can enhance the learning process.
4. Books: There are many books available that focus on teaching ASL, including dictionaries that detail signs for each letter.

Practice Techniques

- Pair Practice: Find a partner to practice fingerspelling and signing together.
- Flashcards: Create flashcards with letters on one side and the corresponding signs on the other.
- Group Classes: Join ASL study groups to practice with others and learn in a social environment.

The Role of "T" in Broader Communication

The letter "T" is not only important in its standalone form but also plays a significant role in constructing words and phrases. Understanding how to use "T" in different contexts can enhance overall communication.

Words Starting with "T"

Here are some common words that start with the letter "T" and their significance in daily conversation:

- Time: Discussing schedules and appointments.
- Talk: Engaging in conversation.
- Tea: Referring to beverages and social gatherings.
- Travel: Discussing trips and experiences.

Knowing how to sign these words can facilitate smoother conversations in various settings, from casual chats to professional discussions.

Building Sentences with "T"

Once you are familiar with the letter "T" and common words, you can start forming simple sentences. For example:

- "Tina is my friend."
- "I love to travel."
- "What time is it?"

Using the sign for "T" in these sentences helps convey messages more clearly.

Conclusion

In summary, the letter "T" in sign language is a fundamental component of American Sign Language that enhances communication. Learning how to sign "T" and its application in fingerspelling and vocabulary is crucial for effective interaction within the deaf and hard of hearing communities. Through various resources and practice techniques, anyone can master the art of signing and contribute to a more inclusive communication environment. Understanding the significance of each letter, particularly "T," not only enriches language skills but also fosters deeper connections with others. Whether you are a beginner or looking to refine your skills, embracing the world of ASL opens up new pathways for communication and understanding.

Frequently Asked Questions

What does the letter 'A' look like in sign language?

In American Sign Language (ASL), the letter 'A' is represented by making a fist with your thumb resting along the side of your index finger.

How is 'T' represented in sign language?

In ASL, the letter 'T' is shown by making a fist with your thumb placed between your index and middle fingers.

What are some tips for learning the letter 'T' in sign language?

Practice the handshape in front of a mirror, and pair it with words that start with 'T' to reinforce memory.

Are there different signs for 'T' in other sign languages?

Yes, different sign languages have their own unique signs for letters, including 'T'. For example, in British Sign Language (BSL), 'T' is also a fist with the thumb between the fingers.

How do I practice fingerspelling the letter 'T'?

You can practice fingerspelling by writing out words that contain the letter 'T' and signing them repeatedly.

Is fingerspelling the same in all sign languages?

No, fingerspelling varies between different sign languages; each has its own system for representing letters.

What resources can help me learn ASL fingerspelling, including 'T'?

Online courses, ASL apps, and video tutorials can provide visual demonstrations and practice exercises for learning fingerspelling.

Can I use the letter 'T' in everyday conversation in sign language?

Yes, fingerspelling is commonly used in ASL to spell out names, places, and words that do not have a specific sign.

Find other PDF article:

<https://soc.up.edu.ph/49-flash/Book?docid=INm43-1269&title=quadratic-formula-worksheet-with-answers.pdf>

A T In Sign Language

bigbang

Aug 15, 2014 · bigbang빅뱅의정신 BigBang 빅뱅의정신 Ye the ...

TPAMI -

Dec 15, 2024 · TPAMI IEEE Transactions on Pattern ...

T 000-000000 - 00

T □□□□ □□□ t □□□□□□□□ t □□□□□□□□□□ □□□□□□□□ t □ t □□ x 1□ x 2□□□□□□□□□□ s 2□□□ ...

ОПТ Н _____

O P T H PTH ...

□□□□□□ - □□□□

□□A□□□□□□□□□□□□□□□□B□□□□C□□□□D□□□□E□□□□F□□□□G□□□□H□□□□J□□□□K□□□□L□□ ...

bigbang

Aug 15, 2014 · bigbang이제야 I realize that I'm nothing without you I ... BigBang 이제야 I realize that I'm nothing without you I ... Ye the finally I realize that I'm nothing without you I ...

TPAMI - 11

Dec 15, 2024 · TPAMI IEEE Transactions on Pattern Analysis and Machine Intelligence ...

T --- - - -

T $\alpha_1 \alpha_2 \dots \alpha_n$ $t_1 t_2 \dots t_n$ $x_1 x_2 \dots x_n$ $s_1 s_2 \dots s_n$ $n_1 n_2 \dots n_n$...

O P T H

0PPT H PTH0

_____ - _____

A B C D E F G H J K L M N P
 Q ...

Discover how to sign the letter 'A T' in sign language with our easy-to-follow guide. Enhance your communication skills today! Learn more now!

[Back to Home](#)