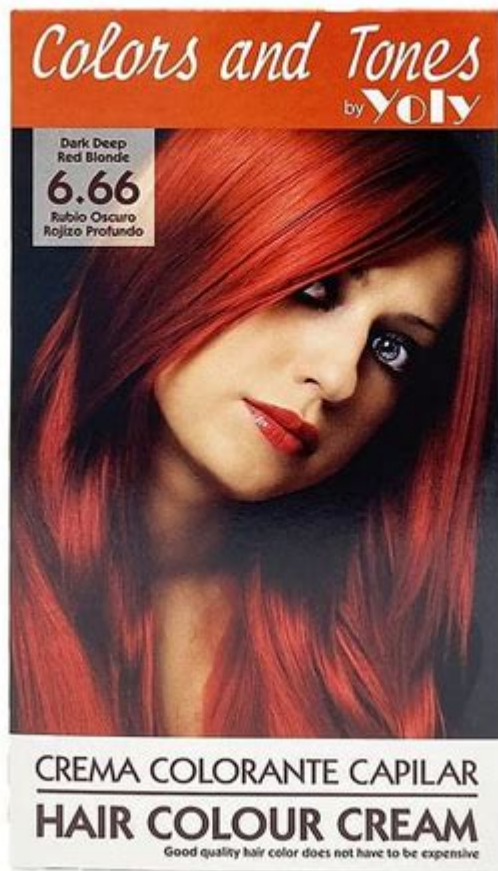


A Shade Of Red Entertainment



A Shade of Red Entertainment has emerged as a dynamic force in the entertainment industry, captivating audiences with its unique blend of creativity, innovation, and a commitment to storytelling. Founded by a group of passionate artists and entrepreneurs, this company seeks to redefine the entertainment landscape by celebrating diverse voices and crafting narratives that resonate with a global audience. In this article, we delve deep into the various aspects of A Shade of Red Entertainment, exploring its mission, the types of projects it undertakes, and its impact on the industry.

Mission and Vision

At the heart of A Shade of Red Entertainment lies a mission to create compelling content that reflects the complexity of human experiences. The company envisions a world where stories transcend boundaries and connect people from different walks of life.

Core Values

The core values that guide the operations of A Shade of Red Entertainment include:

1. Diversity and Inclusion: Emphasizing the importance of representing varied perspectives in storytelling.
2. Creativity and Innovation: Encouraging out-of-the-box thinking and the exploration of new ideas.
3. Quality and Excellence: Commitment to producing high-quality content that engages and entertains.
4. Collaboration: Fostering a spirit of teamwork among artists, writers, and producers.
5. Social Responsibility: Acknowledging the role of entertainment in society and striving to make a positive impact.

Types of Projects

A Shade of Red Entertainment spans a wide array of projects, making it a versatile player in the entertainment industry. The company engages in various formats, including:

- Film Production: Producing feature films that cover a range of genres, from drama to comedy and action.
- Television Series: Developing original series that tackle important social issues while entertaining audiences.
- Theatre Productions: Reviving classic plays and creating new works that reflect contemporary themes.
- Digital Content: Producing web series, podcasts, and other forms of digital media that cater to modern consumption habits.

Film Production

Film production is one of the cornerstones of A Shade of Red Entertainment. The company prides itself on creating films that not only entertain but also provoke thought and discussion.

Key Film Projects:

- "Crimson Chronicles": A drama that explores the complexities of family relationships against a backdrop of societal change.
- "Reds in the City": A romantic comedy that captures the vibrant culture of urban life, focusing on love and friendship.
- "Shades of Revolution": A historical drama that narrates the untold stories of activists who fought for change.

Television Series

The television division of A Shade of Red Entertainment focuses on creating series that resonate with viewers while addressing timely issues.

Notable Series:

- "Voices Unheard": A docuseries highlighting marginalized communities and their struggles for recognition.
- "The Color of Us": A fictional series that delves into the lives of diverse characters navigating the complexities of identity and belonging.

Theatre Productions

The theatre arm of A Shade of Red Entertainment seeks to bring powerful stories to life on stage. By collaborating with talented playwrights and directors, the company aims to create thought-provoking performances.

Upcoming Productions:

- "Scarlet Dreams": A play that explores the intersections of ambition and morality in a fast-paced world.
- "Redemption": A contemporary retelling of a classic story, focusing on themes of forgiveness and second chances.

Impact on the Industry

A Shade of Red Entertainment is not just another player in the entertainment field; it is a catalyst for change. By prioritizing diversity and inclusion, the company is paving the way for underrepresented voices to be heard.

Breaking Barriers

The company actively seeks to break barriers in the industry by:

- Supporting Emerging Talent: A Shade of Red Entertainment offers mentorship programs for up-and-coming artists in various fields.
- Collaborations with Diverse Creators: By partnering with creators from different backgrounds, the company ensures a range of perspectives in its projects.
- Advocating for Social Issues: Many of the company's projects tackle pressing social issues, encouraging

dialogue and awareness among audiences.

Community Engagement

A Shade of Red Entertainment understands the importance of community and actively engages with its audience through:

- Workshops and Panels: Hosting events that educate and inspire aspiring artists.
- Charitable Initiatives: Partnering with organizations that support social causes, contributing a portion of profits to local charities.
- Interactive Campaigns: Creating online platforms for viewers to share their stories and experiences related to the themes of the projects.

Future Directions

Looking ahead, A Shade of Red Entertainment aims to expand its reach and continue pushing the boundaries of storytelling.

Innovative Technologies

The rise of technology presents exciting opportunities for the company to explore:

- Virtual Reality Experiences: Developing immersive storytelling experiences that transport audiences into the narratives.
- Interactive Content: Creating content that allows viewers to make choices and influence the storyline.

Global Expansion

As part of its growth strategy, A Shade of Red Entertainment is exploring international markets:

- Collaborations with Foreign Filmmakers: Partnering with creators from different countries to produce cross-cultural projects.
- Subtitling and Dubbing: Making its content accessible to non-English speaking audiences, thereby increasing its global footprint.

Conclusion

A Shade of Red Entertainment represents a bold vision for the future of storytelling in the entertainment industry. With its commitment to diversity, innovation, and social responsibility, the company is not just creating content; it is shaping culture and fostering connections among people from all walks of life. As it continues to grow and evolve, A Shade of Red Entertainment remains dedicated to its mission of telling stories that matter, ensuring that every shade of red in its palette resonates with audiences around the world.

In a world where entertainment often reflects societal values, A Shade of Red Entertainment stands as a beacon of hope, creativity, and inclusivity, inviting everyone to join in the celebration of diverse narratives that enrich our collective experience.

Frequently Asked Questions

What is 'A Shade of Red Entertainment' known for?

'A Shade of Red Entertainment' is known for producing diverse and engaging content that focuses on themes of empowerment, identity, and cultural representation.

How does 'A Shade of Red Entertainment' support emerging artists?

The company actively seeks to collaborate with and mentor emerging artists by providing platforms for their work and facilitating networking opportunities.

What types of projects does 'A Shade of Red Entertainment' typically produce?

'A Shade of Red Entertainment' typically produces films, web series, and live performances that explore various social issues through a creative lens.

Has 'A Shade of Red Entertainment' won any awards?

Yes, 'A Shade of Red Entertainment' has received several accolades for its innovative storytelling and contributions to the arts, including awards at film festivals.

What is the mission statement of 'A Shade of Red Entertainment'?

The mission of 'A Shade of Red Entertainment' is to amplify underrepresented voices and create impactful narratives that resonate with a global audience.

How can audiences get involved with 'A Shade of Red Entertainment'?

Audiences can get involved by attending events, participating in workshops, or supporting crowdfunding campaigns for new projects.

What impact has 'A Shade of Red Entertainment' had on the industry?

'A Shade of Red Entertainment' has had a significant impact by challenging stereotypes and promoting inclusivity in the entertainment industry, inspiring other creators to follow suit.

Find other PDF article:

<https://soc.up.edu.ph/48-shade/pdf?docid=XFm55-1618&title=printable-dog-training-plan-template.pdf>

[A Shade Of Red Entertainment](#)

Home [reshade.me]

ReShade is a generic post-processing injector for games and video software developed by crosire. Imagine your favorite game with ...

HowTo: Uninstall Reshade - ReShade Forum

Jun 28, 2018 · Re Uninstall Re-Shade NOT WORKING. I have followed the instructions above & deleted just two files plus the ...

Changing keybiding to start tutorial - ReShade Forum

Jul 28, 2019 · 5 years 11 months ago #2 by Duran.te Replied by Duran.te on topic Changing keybiding to start tutorial

Reshade New Version Issues [Ganossa Motion Focus Edit]

Jun 19, 2025 · 1 month 3 days ago - 1 month 3 days ago #1 by Sh1nRa358 Reshade New Version Issues [Ganossa Motion Focus ...

ReShade

ReShade is a generic post-processing injector for games and video software developed by crosire. Imagine your favorite game with ...

Home [reshade.me]

ReShade is a generic post-processing injector for games and video software developed by crosire. Imagine your favorite game with ambient occlusion, real depth of field effects, color correction and more ... ReShade exposes an automated and generic way to access both frame color and depth information (latter is automatically disabled during multiplayer to prevent ...

[HowTo: Uninstall Reshade - ReShade Forum](#)

Jun 28, 2018 · Re Uninstall Re-Shade NOT WORKING. I have followed the instructions above & deleted just two files plus the ReShade Folder. But I still get a message advising of a ReShade

update every time I start my Lockheed Martin P3D flight simulator. When I press SHIFT+F2 I still get the ReShade menu though none of the links work. I really do not wish to uninstall/reInstall ...

Changing keybiding to start tutorial - ReShade Forum

Jul 28, 2019 · 5 years 11 months ago #2 by Duran.te Replied by Duran.te on topic Changing keybiding to start tutorial

Reshade New Version Issues [Ganossa Motion Focus Edit]

Jun 19, 2025 · 1 month 3 days ago - 1 month 3 days ago #1 by Sh1nRa358 Reshade New Version Issues [Ganossa Motion Focus Edit] was created by Sh1nRa358

ReShade

ReShade is a generic post-processing injector for games and video software developed by crosire. Imagine your favorite game with ambient occlusion, real depth of field effects, color correction and more ... ReShade exposes an automated and generic way to access both frame color and depth information (latter is automatically disabled during multiplayer to prevent ...

6.5 - ReShade Forum

May 29, 2025 · 1 month 3 weeks ago - 1 month 1 week ago #1 by crosire 6.5 was created by crosire

[SOLVED] Reshade + DLSS FG = crash on startup

6 months 3 weeks ago #1 by kizoku187 Reshade + DLSS FG = crash on startup was created by kizoku187

3.0 - ReShade Forum

Sep 29, 2016 · After months of work it's finally finished. ReShade 3.0 is a major rewrite of the project, featuring an in-game GUI and so much more. Change values on-the-fly,...

Tutorial (for users) - ReShade Forum

Mar 28, 2015 · Dear users, Since you came to this thread, it seems you want to get familiar with how to use the ReShade Framework. In the following, you can find a basic introduction to its structure and explanations on how to apply and adjust existing effects to your liking. 1. ReShade Framework Structure (basic) To better explain the structure, we split it into two levels. Level 1 ...

6.4 - ReShade Forum

Feb 19, 2025 · Changelog 6.4.0: Features: Added input blocking in games using "Get*Key*State", "GetRawInputBuffer", Windows hooks or DirectInput 8 for input Added basic HDR10/scRGB screenshot support using HDR PNG (thanks to Kaldaien) Added option to Generic Depth add-on to change draw stats heuristic Added button widget for boolean uniform variables (set to true for ...

Explore the vibrant world of A Shade of Red Entertainment! Discover unique experiences

[Back to Home](#)