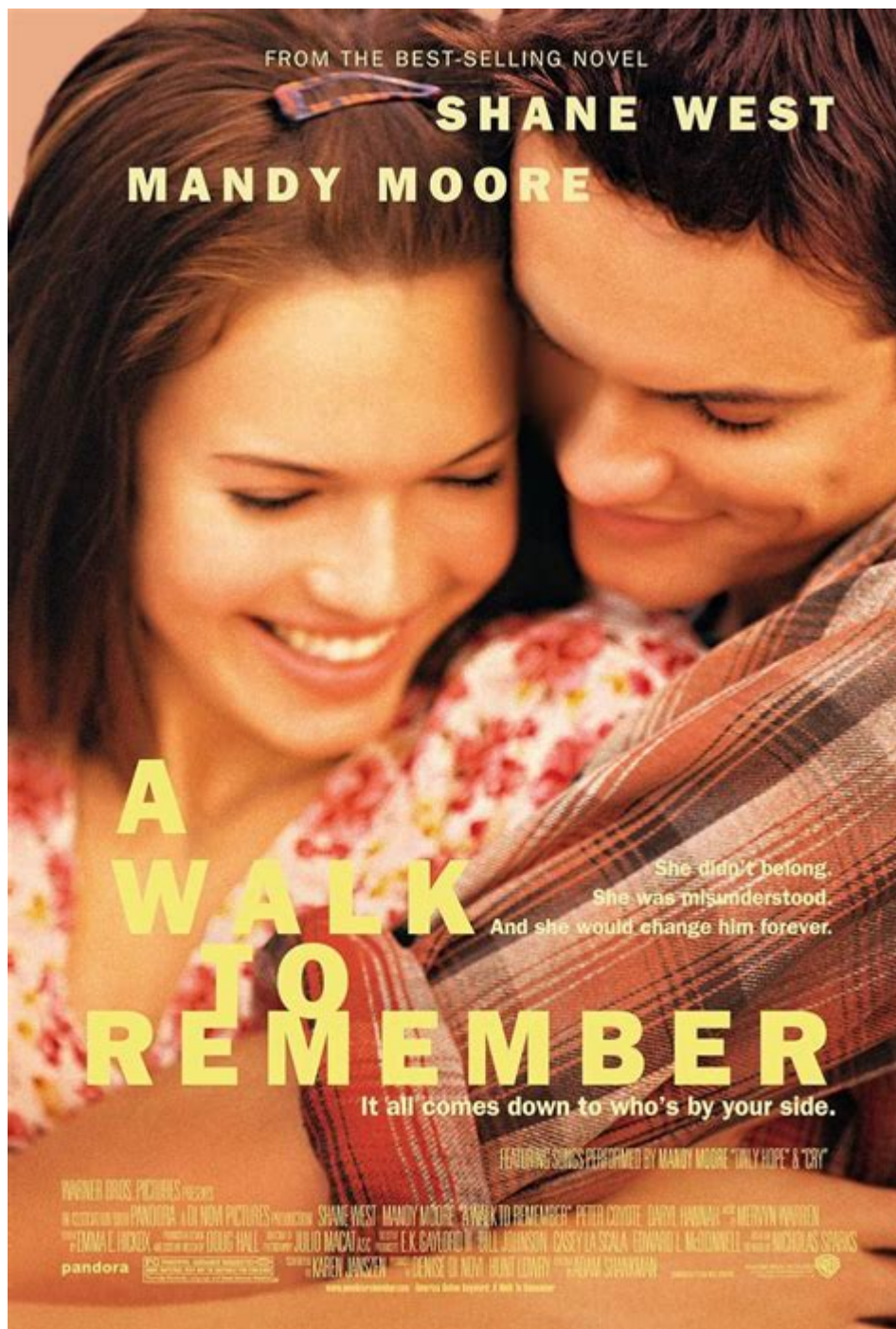


A Walk To Remember Plot



A Walk to Remember: An Overview of the Plot

A Walk to Remember is a poignant romantic drama that has captured the hearts of audiences since its release in 2002. Adapted from the novel by Nicholas Sparks, the film tells a touching story of love, transformation, and the impact of life's choices. Set in the small town of Beaufort, North Carolina, the narrative revolves around two high school students, Landon Carter and Jamie Sullivan, whose lives intertwine in unexpected ways. This article delves into the plot of "A Walk to

Remember," exploring its central themes, character development, and the emotional journey that defines this unforgettable tale.

Plot Summary

The film begins with Landon Carter (played by Shane West), a popular and somewhat reckless high school senior. He is part of the "in-crowd" at his school and is known for his charm and carefree attitude. However, after a prank goes wrong, Landon finds himself facing serious consequences. His punishment for the incident includes participating in the school play, which leads him to interact with Jamie Sullivan (played by Mandy Moore), the quiet and shy daughter of the town's Baptist minister.

Character Introduction

1. Landon Carter: A self-absorbed teenager who learns valuable life lessons throughout the film.
2. Jamie Sullivan: A kind-hearted and devout girl, who is often bullied but remains strong in her faith and beliefs.
3. Harlan Sullivan: Jamie's father, a strict but caring minister who plays a significant role in Jamie's life.
4. Landon's Friends: They represent the typical high school hierarchy, often highlighting Landon's internal struggle between fitting in and being true to himself.

Initial Conflict and Development

Initially, Landon is reluctant to participate in the school play, but he cannot escape the consequences of his actions. Through the rehearsals, he starts to get to know Jamie, who is unlike anyone he has ever met. Jamie's unwavering faith and selflessness begin to intrigue Landon, leading him to discover a side of himself he never knew existed.

As they spend time together, Landon and Jamie develop a deep bond that defies the social barriers of their high school. Landon starts to change, becoming more considerate and genuine, and he begins to fall in love with Jamie. This transformation marks a significant turning point in the story, showcasing the powerful influence love can have on personal growth.

Key Themes Explored

The plot of "A Walk to Remember" touches on several key themes:

- Redemption and Transformation: Landon's journey from a self-centered teenager to a caring individual illustrates the potential for personal growth.
- Faith and Belief: Jamie's strong faith serves as a guiding force throughout the film, emphasizing the importance of belief in oneself and in others.
- Love and Loss: The film poignantly explores how love can bring joy and sorrow, showing that true

love often involves sacrifice.

Climactic Moments

As the relationship between Landon and Jamie blossoms, they face a significant obstacle: Jamie reveals that she has leukemia. This revelation changes the course of their relationship as Landon grapples with the reality of Jamie's illness. The film explores how they cope with this devastating news, showcasing Jamie's courage and Landon's determination to support her.

In light of Jamie's condition, Landon commits himself to making her happy. He goes to great lengths to fulfill her dreams, including building her the perfect starry night sky for their date, a moment that encapsulates the essence of their love.

Life Lessons

Through their experiences, the film presents several important life lessons:

- Cherish Every Moment: The fleeting nature of life is emphasized, urging viewers to appreciate each moment.
- The Power of Love: Love is portrayed as a transformative force, capable of bringing out the best in people.
- Facing Challenges Together: Jamie and Landon's relationship demonstrates the importance of support and companionship in overcoming difficulties.

Resolution and Emotional Impact

As the story progresses, Jamie's health deteriorates, leading to an emotional climax that resonates deeply with the audience. The film culminates in a heart-wrenching farewell, where Landon learns to embrace life and love in the face of loss. Jamie's passing leaves a lasting impact on Landon, shaping him into a better person and inspiring him to live a life that honors her memory.

The resolution of "A Walk to Remember" serves as a bittersweet reminder of the fragility of life and the enduring power of love. It concludes with Landon reflecting on their time together, signaling that even in death, Jamie's spirit continues to guide him.

Legacy of the Film

"A Walk to Remember" has left an indelible mark on popular culture and continues to be a beloved film for many. Its themes of love, faith, and personal growth resonate with viewers, making it a timeless classic. The performances of Shane West and Mandy Moore have been widely praised, bringing authenticity and depth to their characters.

The film's impact is further amplified through its memorable soundtrack, which features poignant

songs that complement the emotional beats of the narrative. Songs like "Only Hope" and "Cry" underscore the film's themes and enhance the viewing experience.

Conclusion

In conclusion, "A Walk to Remember" is more than just a romantic drama; it is a heartfelt exploration of love, loss, and the journey of self-discovery. The plot intricately weaves together the lives of Landon and Jamie, showcasing the profound impact they have on each other. Through their experiences, viewers are reminded of the importance of love, faith, and the courage to face life's challenges. This film remains an enduring testament to the power of love and the lessons we learn through the relationships we cherish. Whether revisiting it for the first time or watching it again, "A Walk to Remember" continues to inspire and evoke deep emotions, ensuring its place in the hearts of many.

Frequently Asked Questions

What is the main premise of 'A Walk to Remember'?

The story revolves around the transformative relationship between two teenagers, Landon Carter and Jamie Sullivan, in the small town of Beaufort, North Carolina.

How does Landon Carter's character change throughout the story?

Landon begins as a rebellious and self-centered teenager but evolves into a more thoughtful and compassionate person through his love for Jamie.

What illness does Jamie Sullivan suffer from in 'A Walk to Remember'?

Jamie is diagnosed with leukemia, which plays a crucial role in the emotional depth of the story.

What is the significance of Jamie's list of wishes?

Jamie's list symbolizes her dreams and desires, reflecting her hope and determination to live life fully despite her illness.

How does the setting of Beaufort, North Carolina, enhance the story?

The picturesque small-town setting creates a backdrop that emphasizes the themes of love, community, and personal growth.

What role does faith play in 'A Walk to Remember'?

Faith is a central theme, particularly through Jamie's character, who deeply believes in God and seeks to inspire others through her kindness and strength.

What message does 'A Walk to Remember' convey about love?

The story conveys that true love transcends superficial differences and can lead to profound personal change and growth.

What is the climax of 'A Walk to Remember'?

The climax occurs when Jamie's health deteriorates, leading to a heart-wrenching realization for Landon about the fragility of life and the depth of his love for her.

Find other PDF article:

<https://soc.up.edu.ph/61-page/files?ID=QPD36-5073&title=the-practice-of-public-relations.pdf>

A Walk To Remember Plot

About Get Help - Microsoft Support

About Get Help The Windows Get Help app is a centralized hub for accessing a wide range of resources, including tutorials, FAQs, community forums, and direct assistance from Microsoft support personnel.

How to get help in Windows - Microsoft Support

Here are a few different ways to find help for Windows Search for help - Enter a question or keywords in the search box on the taskbar to find apps, files, settings, and get help from the web.

Windows help and learning - support.microsoft.com

Find help and how-to articles for Windows operating systems. Get support for Windows and learn about installation, updates, privacy, security and more.

Meet Windows 11: The Basics - Microsoft Support

Welcome to Windows 11! Whether you're new to Windows or upgrading from a previous version, this article will help you understand the basics of Windows 11. We'll cover the essential components of the desktop, File Explorer, and Microsoft Edge, providing you with a solid foundation to navigate and use Windows 11 effectively. User experience Windows 11 is the ...

Running troubleshooters in Get Help - Microsoft Support

How to run the various troubleshooters within the Windows Get Help app.

[] [] [] [] [] [] [] [] [] [] [] [] [] [] []

Microsoft

Getting ready for the Windows 11 upgrade - Microsoft Support

Learn how to get ready for the Windows 11 upgrade, from making sure your device can run Windows 11 to backing up your files and installing Windows 11.

[Fix sound or audio problems in Windows - Microsoft Support](#)

Run the Windows audio troubleshooter If you are using a Windows 11 device, start by running the automated audio troubleshooter in the Get Help app. It will automatically run diagnostics and attempt to fix most audio problems. If you are using an older version of Windows or a mobile device, please skip to General troubleshooting steps.

Windows 11 - support.microsoft.com

Windows 11 - [Windows 11 - support.microsoft.com](#)

Ways to install Windows 11 - Microsoft Support

Feb 4, 2025 · Learn how to install Windows 11, including the recommended option of using the Windows Update page in Settings.

What Does Bed Bugs Shedding Look Like | The Exterminators

It is not always possible to spot live bed bugs until the infestation has grown out of control, so early warning signs such as bed bug shedding are a reliable indicator that you have a pest problem. You, of course, need to know what to look out for since the shedding is easy to miss. Remember that a fully-grown female is capable of laying up to 500 eggs in her lifetime so it is imperative that ...

[Bed Bug Shells, Casings, and Skins \(Identification and What to Do\)](#)

Jun 21, 2023 · The first sign of a bed bug infestation will often be their shells or casings. But what do the shells look like? And what should you do?

Bed Bug Shells: What Do They Look Like? (with Real Photos)

What do bed bug shells look like? It's important to realize that a bed bug shell looks precisely like a bed bug in size and shape.

Identifying Bed Bug Shells: Shedding Visuals Explained

Learn to identify bed bug shells and shedding to detect infestations early, including tips for inspection and prevention.

Bed Bug Casings, Shells and Skin: Everything you Need to Know

Jul 29, 2021 · Bed Bug Bites – Bed bug bites look like welts and do not have a red spot at the center, unlike other insect bites such as spiders and fleas. Bed bugs tend to hide in groups or near each other. This is typically in undisturbed areas around your bedroom or other parts of your home. They tend to hide near their host to make feeding as easy as ...

Bed Bug Shells, Cast Skin & Exoskeleton - Pestbugs

What do bed bug shells look like Bed bug shells appear as clear exoskeletons which are empty. Bed bug shed skin is found in clusters and since the shells do not decompose at the same time, they may start to build up. The skin that bed bugs shed resembles a live bed bug and the two are at times confused. The shed skin looks like the bed bug's full suit that has been taken off. Nevertheless ...

18 Signs of Bedbugs: What They Look Like & How to Get Rid of ...

What Do Bedbugs Look Like? There are several signs of a bedbug infestation, which include bedbugs in the folds of mattresses and sheets, bed bug exoskeletons after molting, bedbug eggs, pinhead-sized white ovals, rust-colored blood spots on bedding or furniture, a sweet/musty odor, fecal spots, and others.

Bed Bug Shells, Skins & Casings: Complete Visual Guide - PestSeek

Dec 29, 2020 · What Do Bed Bug Shells Look Like? Many people wonder what a bed bug shell looks like and in most cases, it looks just like the bed bug but without the body on the inside.

What Does Bed Bug Shedding Look Like?

Jun 6, 2024 · You might find these sheddings in areas where bed bugs hide and nest, such as mattress seams, crevices in bed frames, or behind baseboards. They can be indicators of a bed bug infestation, along with other signs like blood spots on bedding, molted skins, or actual sightings of the bugs themselves.

Bed Bug Shells: What You Need To Know | Outdoor Pests

May 7, 2023 · These casings can indicate a bed bug infestation, and understanding their appearance and location can help identify the growth stage of the bed bugs. This article will provide essential information about dead bed bug shells, skins, and casings, including where to find them, what they look like, and what to do if you identify them.

Explore the heartwarming plot of 'A Walk to Remember' as love transforms lives. Discover how this poignant story unfolds and its lasting impact. Learn more!

[Back to Home](#)