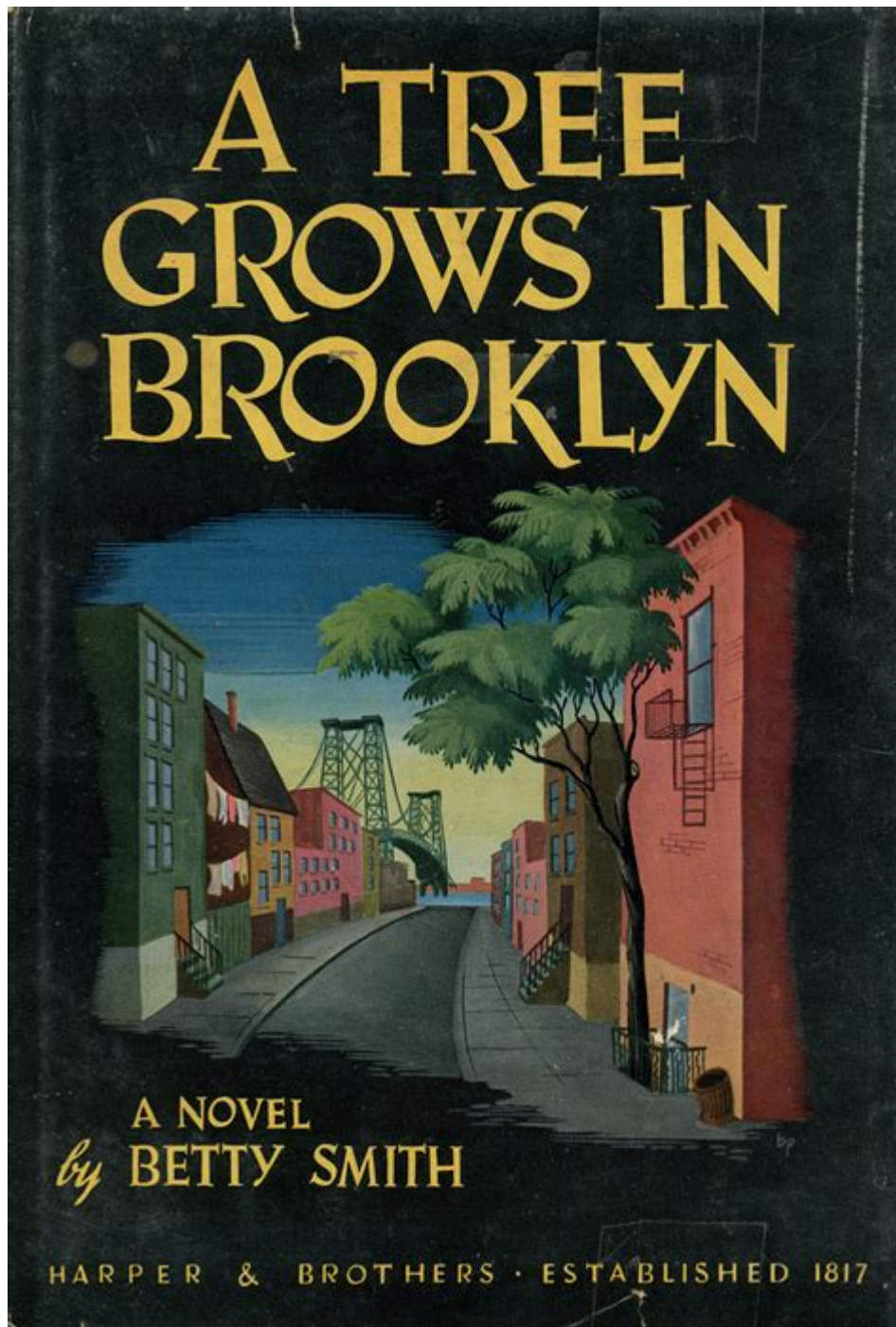


# A Tree Grows In Brooklyn By Betty Smith



**A TREE GROWS IN BROOKLYN** IS A POIGNANT COMING-OF-AGE NOVEL WRITTEN BY BETTY SMITH, FIRST PUBLISHED IN 1943. THE NARRATIVE IS SET IN THE EARLY 20TH CENTURY AND REVOLVES AROUND THE LIFE OF A YOUNG GIRL NAMED FRANCIE NOLAN, WHO GROWS UP IN THE IMPOVERISHED NEIGHBORHOOD OF WILLIAMSBURG, BROOKLYN. THROUGH ITS VIVID DESCRIPTIONS AND RELATABLE CHARACTERS, THE NOVEL EXPLORES THEMES OF POVERTY, RESILIENCE, EDUCATION, AND THE COMPLEXITIES OF FAMILY DYNAMICS. IT HAS BECOME A CLASSIC IN AMERICAN LITERATURE, RESONATING WITH READERS FOR ITS AUTHENTICITY AND EMOTIONAL DEPTH.

# BACKGROUND OF BETTY SMITH AND THE NOVEL

## AUTHOR'S LIFE

BETTY SMITH, BORN IN 1896 IN BROOKLYN, WAS THE DAUGHTER OF LITHUANIAN IMMIGRANTS. HER EXPERIENCES GROWING UP IN A POOR NEIGHBORHOOD GREATLY INFLUENCED HER WRITING. SMITH'S FAMILY FACED MANY HARDSHIPS, INCLUDING FINANCIAL STRUGGLES AND THE CHALLENGES POSED BY THEIR IMMIGRANT STATUS. THESE EXPERIENCES ARE REFLECTED IN THE STRUGGLES OF FRANCIE NOLAN, THE PROTAGONIST OF HER MOST FAMOUS WORK.

## PUBLICATION AND RECEPTION

WHEN "A TREE GROWS IN BROOKLYN" WAS PUBLISHED, IT QUICKLY GARNERED ATTENTION FOR ITS HONEST PORTRAYAL OF LIFE IN A WORKING-CLASS NEIGHBORHOOD. CRITICS Praised SMITH'S ABILITY TO CAPTURE THE ESSENCE OF CHILDHOOD AND THE INTRICACIES OF FAMILY LIFE. THE NOVEL BECAME A BESTSELLER AND HAS SINCE BEEN ADAPTED INTO A FILM AND A STAGE PLAY. OVER THE DECADES, IT HAS REMAINED RELEVANT, OFTEN INCLUDED IN SCHOOL CURRICULA AND Praised FOR ITS EXPLORATION OF THEMES THAT RESONATE ACROSS GENERATIONS.

## PLOT OVERVIEW

THE STORY FOLLOWS FRANCIE NOLAN, A SENSITIVE AND INTELLIGENT YOUNG GIRL, AS SHE NAVIGATES THE CHALLENGES OF GROWING UP IN A POOR BROOKLYN NEIGHBORHOOD. THE NOVEL SPANS SEVERAL YEARS, ALLOWING READERS TO WITNESS FRANCIE'S GROWTH FROM A CHILD INTO A YOUNG WOMAN.

## MAIN CHARACTERS

- FRANCIE NOLAN: THE PROTAGONIST, WHOSE DREAMS AND ASPIRATIONS DRIVE THE STORY.
- KATIE NOLAN: FRANCIE'S HARDWORKING MOTHER, WHO STRIVES TO PROVIDE FOR HER FAMILY DESPITE THEIR ECONOMIC STRUGGLES.
- JOHNNY NOLAN: FRANCIE'S CHARMING BUT ALCOHOLIC FATHER, WHOSE INABILITY TO SUSTAIN A STEADY JOB AFFECTS THE FAMILY.
- AUNT SISSY: FRANCIE'S LIVELY AND UNCONVENTIONAL AUNT WHO ADDS COLOR TO THE FAMILY'S LIFE.
- NEELY NOLAN: FRANCIE'S YOUNGER BROTHER, WHO ALSO EXPERIENCES THE UPS AND DOWNS OF THEIR LIFE IN BROOKLYN.

## KEY EVENTS

1. CHILDHOOD STRUGGLES: THE STORY BEGINS WITH FRANCIE'S EARLY CHILDHOOD, WHERE SHE EXPERIENCES THE HARSH REALITIES OF POVERTY.
2. EDUCATION AND DREAMS: DESPITE HER CIRCUMSTANCES, FRANCIE IS DETERMINED TO RECEIVE AN EDUCATION AND PURSUE HER DREAMS OF BECOMING A WRITER.
3. FAMILY DYNAMICS: THE COMPLEXITIES OF THE NOLAN FAMILY ARE EXPLORED, PARTICULARLY THE IMPACT OF JOHNNY'S ALCOHOLISM AND KATIE'S RESILIENCE.
4. LOSS AND GROWTH: AS FRANCIE MATURES, SHE FACES NUMEROUS LOSSES THAT SHAPE HER PERSPECTIVE ON LIFE AND HER ASPIRATIONS.

# THEMATIC EXPLORATION

"A TREE GROWS IN BROOKLYN" DELVES INTO SEVERAL SIGNIFICANT THEMES THAT CONTINUE TO RESONATE WITH READERS.

## POVERTY AND RESILIENCE

THE NOVEL PAINTS A STARK PICTURE OF POVERTY IN EARLY 20TH-CENTURY AMERICA. FRANCIE AND HER FAMILY STRUGGLE TO MAKE ENDS MEET, OFTEN GOING WITHOUT BASIC NECESSITIES. HOWEVER, SMITH ALSO EMPHASIZES RESILIENCE. DESPITE THEIR HARDSHIPS, THE NOLANS FIND JOY IN SMALL MOMENTS AND HOLD ONTO THEIR DREAMS.

- EXAMPLES OF RESILIENCE:
- FRANCIE'S DETERMINATION TO EXCEL IN SCHOOL.
- KATIE'S RELENTLESS WORK ETHIC TO PROVIDE FOR HER CHILDREN.
- THE FAMILY'S ABILITY TO FIND HAPPINESS IN SIMPLE PLEASURES, LIKE STORYTELLING AND COMMUNITY.

## EDUCATION AND ASPIRATION

EDUCATION PLAYS A CENTRAL ROLE IN FRANCIE'S LIFE. IT REPRESENTS HOPE AND THE POSSIBILITY OF A BETTER FUTURE. FRANCIE'S LOVE FOR READING AND HER DESIRE TO WRITE BECOME SYMBOLS OF HER ASPIRATIONS.

- KEY POINTS REGARDING EDUCATION:
- FRANCIE'S STRUGGLES IN SCHOOL MIRROR HER PERSONAL CHALLENGES.
- THE IMPORTANCE OF BOOKS AS A MEANS OF ESCAPE AND INSPIRATION.
- THE CONTRAST BETWEEN FRANCIE'S ASPIRATIONS AND THE LIMITATIONS IMPOSED BY HER ENVIRONMENT.

## FAMILY DYNAMICS

THE NOLAN FAMILY IS COMPLEX AND MULTI-DIMENSIONAL. BETTY SMITH ILLUSTRATES THE LOVE AND CONFLICT THAT EXISTS WITHIN THE FAMILY UNIT.

- FAMILY RELATIONSHIPS:
- THE BOND BETWEEN FRANCIE AND HER MOTHER, WHICH IS BOTH SUPPORTIVE AND STRAINED.
- THE INFLUENCE OF JOHNNY'S CHARACTER ON THE FAMILY, PARTICULARLY HIS IMPACT ON FRANCIE'S VIEW OF MEN AND RELATIONSHIPS.
- AUNT SISSY'S ROLE AS A NON-TRADITIONAL FIGURE WHO CHALLENGES SOCIETAL NORMS.

## SYMBOLISM IN THE NOVEL

SMITH EMPLOYS VARIOUS SYMBOLS THROUGHOUT "A TREE GROWS IN BROOKLYN," ENRICHING THE NARRATIVE AND DEEPENING ITS MEANING.

## THE TREE

THE TREE THAT GROWS IN BROOKLYN SERVES AS A POWERFUL SYMBOL OF RESILIENCE AND HOPE. IT THRIVES IN HARSH CONDITIONS, MUCH LIKE FRANCIE'S SPIRIT AMID ADVERSITY. THE TREE REPRESENTS THE POSSIBILITY OF GROWTH AND SURVIVAL, DESPITE THE CHALLENGES ONE FACES.

## BOOKS AND WRITING

BOOKS SYMBOLIZE KNOWLEDGE, ESCAPE, AND THE ASPIRATION FOR A BETTER LIFE. FOR FRANCIE, READING IS A REFUGE FROM HER STRUGGLES, AND HER DESIRE TO WRITE ENCAPSULATES HER HOPES AND DREAMS.

## IMPACT AND LEGACY

"A TREE GROWS IN BROOKLYN" HAS LEFT A LASTING LEGACY IN AMERICAN LITERATURE. ITS EXPLORATION OF UNIVERSAL THEMES SUCH AS POVERTY, FAMILY, AND RESILIENCE RESONATES WITH READERS OF ALL AGES. THE NOVEL HAS INSPIRED COUNTLESS INDIVIDUALS TO PURSUE THEIR DREAMS DESPITE OBSTACLES, AND IT CONTINUES TO BE CELEBRATED FOR ITS AUTHENTIC PORTRAYAL OF LIFE.

## ADAPTATIONS

THE NOVEL'S POPULARITY HAS LED TO SEVERAL ADAPTATIONS, INCLUDING:

- FILM ADAPTATION (1945): DIRECTED BY ELIA KAZAN, THE FILM BROUGHT THE STORY TO A WIDER AUDIENCE, ALTHOUGH IT MADE SOME CHANGES TO THE SOURCE MATERIAL.
- STAGE ADAPTATION: THE NOVEL HAS BEEN ADAPTED INTO STAGE PRODUCTIONS, SHOWCASING ITS THEMES AND CHARACTERS THROUGH LIVE PERFORMANCE.

## INFLUENCE ON LITERATURE AND EDUCATION

THE NOVEL IS OFTEN INCLUDED IN HIGH SCHOOL AND UNIVERSITY CURRICULA, SERVING AS A TOOL FOR DISCUSSING THEMES OF SOCIAL JUSTICE, GENDER ROLES, AND THE IMMIGRANT EXPERIENCE. ITS ENDURING RELEVANCE SPEAKS TO THE POWER OF STORYTELLING TO REFLECT AND SHAPE SOCIETAL ISSUES.

## CONCLUSION

IN CONCLUSION, "A TREE GROWS IN BROOKLYN" IS MORE THAN JUST A STORY OF A GIRL GROWING UP IN A TOUGH ENVIRONMENT; IT IS A TESTAMENT TO THE HUMAN SPIRIT'S RESILIENCE. BETTY SMITH'S RICH STORYTELLING AND DEEP CHARACTER DEVELOPMENT ALLOW READERS TO CONNECT WITH FRANCIE'S JOURNEY ON MANY LEVELS. THE NOVEL'S EXPLORATION OF POVERTY, EDUCATION, AND FAMILIAL COMPLEXITY OFFERS VALUABLE INSIGHTS THAT REMAIN PERTINENT TODAY. ITS LEGACY CONTINUES TO INSPIRE AND CHALLENGE READERS TO RECOGNIZE THE BEAUTY AND STRENGTH THAT CAN EMERGE FROM ADVERSITY.

## FREQUENTLY ASKED QUESTIONS

### WHAT ARE THE MAIN THEMES EXPLORED IN 'A TREE GROWS IN BROOKLYN'?

THE MAIN THEMES INCLUDE THE STRUGGLES OF POVERTY, THE IMPORTANCE OF EDUCATION, THE RESILIENCE OF THE HUMAN SPIRIT, AND THE COMPLEXITY OF FAMILY DYNAMICS.

### HOW DOES THE SETTING OF BROOKLYN IN THE EARLY 20TH CENTURY INFLUENCE THE

## CHARACTERS IN THE NOVEL?

THE SETTING REFLECTS THE SOCIO-ECONOMIC CHALLENGES AND CULTURAL DIVERSITY OF THE TIME, SHAPING THE CHARACTERS' EXPERIENCES AND ASPIRATIONS AS THEY NAVIGATE LIFE IN A WORKING-CLASS ENVIRONMENT.

## WHAT ROLE DOES THE CHARACTER OF FRANCIE NOLAN PLAY IN 'A TREE GROWS IN BROOKLYN'?

FRANCIE NOLAN SERVES AS THE PROTAGONIST WHOSE COMING-OF-AGE JOURNEY ILLUSTRATES THEMES OF HOPE, DETERMINATION, AND THE QUEST FOR A BETTER LIFE AMIDST ADVERSITY.

## HOW DOES BETTY SMITH USE SYMBOLISM IN THE NOVEL, PARTICULARLY WITH THE TREE?

THE TREE SYMBOLIZES RESILIENCE AND THE ABILITY TO THRIVE DESPITE DIFFICULT CIRCUMSTANCES, REPRESENTING FRANCIE'S GROWTH AND ASPIRATIONS AS SHE SEEKS TO RISE ABOVE HER IMPOVERISHED SURROUNDINGS.

## WHAT IMPACT HAS 'A TREE GROWS IN BROOKLYN' HAD ON AMERICAN LITERATURE AND CULTURE?

THE NOVEL HAS HAD A LASTING IMPACT AS A CLASSIC AMERICAN COMING-OF-AGE STORY, INFLUENCING DISCUSSIONS AROUND SOCIAL ISSUES, GENDER ROLES, AND THE IMMIGRANT EXPERIENCE, AND CONTINUES TO RESONATE WITH READERS TODAY.

Find other PDF article:

<https://soc.up.edu.ph/34-flow/Book?dataid=dom83-1854&title=jeep-cherokee-wagoneer-comanche-1984-2001-haynes-repair-manual.pdf>

## A Tree Grows In Brooklyn By Betty Smith

TREE 3 -

TREE (3) FGH hydra TREE (3) ...

AI IDE—Trae chui -

AI Trae AI MarsCode ...

tree 3 -

TREE (3) n n 3 tree (1)=2 tree (2)=5 tree (3) ...

-

2011 1 ...

TREE 3? -

TREE 3 TREE 3 TREE 3 TREE 3

∞ ...

*TREE*3 -  
TREE (3)FGHhydra TREE  
(3) ...

AIIDE—Trae chui -  
AITrae AIMarsCode  
...

tree3 -  
TREE (3)n3 tree (1)=2 tree  
(2)=5 tree (3) ...

-  
2011 1  
...

TREE3?  
TREE3TREE3TREE3  
∞ ...

TREE4TREE3 -  
Feb 15, 2024 · "TREE (4)" "TREE (3)"  
TREE ...

fdd?  
klxdzh View->Windows->Object Tree, Result View  
2024-09-23 18:16 2

5G (0)TREE (2) -  
TREE2 =3 Rayo BB BB Rayo  
7 2025-01 ...

tree (3)  
TREE (3)TREE (3)TREE (3)TREE3  
...

Tree (3)1 ...  
Tree (3)1 @ - Something about  
Everything - ...

Explore the heartfelt journey in "A Tree Grows in Brooklyn" by Betty Smith. Discover themes of resilience and hope in this timeless classic. Learn more!

[Back to Home](#)