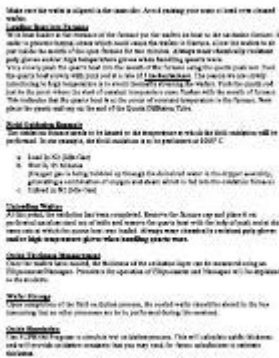


3486 Safe Loading Assessment V2 Answers



3486 safe loading assessment v2 answers is an essential topic for those involved in the safe loading and transport of goods, especially in industries such as logistics, shipping, and freight management. Understanding safe loading procedures and the associated assessments is vital for ensuring the safety of personnel, equipment, and cargo. This article delves into the importance of safe loading assessments, the specifics of version 2 of the assessment, and some commonly encountered questions and answers to aid in comprehension and compliance.

Understanding Safe Loading Assessments

Safe loading assessments are systematic evaluations conducted to determine the safety and compliance of loading practices in various transportation settings. These assessments help to minimize the risks associated with cargo loading, ensuring that loads are secured properly, that weight limits are adhered to, and that the vehicle is capable of safely transporting the cargo.

The Importance of Safe Loading Assessments

1. **Safety of Personnel:** Ensuring that loading practices are safe protects workers from accidents and injuries related to improperly loaded cargo.
2. **Protection of Cargo:** Proper loading practices help prevent damage to goods during transit, which can lead to financial losses and customer dissatisfaction.
3. **Regulatory Compliance:** Many industries are governed by strict regulations regarding load limits and safe transportation practices. Compliance is essential to avoid legal penalties.
4. **Vehicle Stability:** Properly loaded vehicles are less likely to experience tipping or loss of control, which can lead to serious accidents.
5. **Operational Efficiency:** Safe loading practices can optimize load distribution, enhancing fuel efficiency and reducing wear and tear on vehicles.

Overview of 3486 Safe Loading Assessment V2

Version 2 of the 3486 safe loading assessment introduces updated guidelines and standards for evaluating loading practices. These updates reflect changes in industry standards, technological advancements, and best practices based on recent research.

Key Features of Version 2

- **Enhanced Criteria:** Version 2 includes more rigorous criteria for evaluating loading practices, ensuring that assessments are comprehensive.
- **Integration of Technology:** The updated version incorporates technological tools to facilitate the assessment process, allowing for more accurate measurements and evaluations.
- **Focus on Training:** There is an increased emphasis on the training and education of personnel involved in loading and unloading activities.
- **Feedback Mechanisms:** Version 2 encourages operators to provide feedback on the assessment process to continually improve the guidelines.

Common Questions and Answers Related to 3486 Safe Loading Assessment V2

To better illustrate the concepts behind the 3486 safe loading assessment v2 answers, here are some frequently asked questions along with their answers:

1. What are the main objectives of the 3486 safe loading assessment?

The main objectives of the assessment include:

- Evaluating the safety of loading practices.
- Ensuring compliance with regulatory requirements.
- Reducing the risk of accidents and cargo damage.
- Improving overall operational efficiency in loading processes.

2. Who is responsible for conducting the safe loading assessment?

Typically, the responsibility for conducting safe loading assessments falls to trained loading supervisors, safety officers, or designated personnel within a logistics or transport organization. These individuals must have a thorough understanding of safe loading principles and practices.

3. How often should safe loading assessments be conducted?

The frequency of conducting safe loading assessments can vary based on organizational policies, industry standards, and regulatory requirements. However, it is generally recommended to conduct assessments:

- Before a new loading process is implemented.
- Following any significant changes to loading equipment or procedures.
- Periodically (e.g., annually) to ensure ongoing compliance and safety.

4. What are some common mistakes made during loading that the assessment aims to identify?

Some common mistakes that safe loading assessments aim to identify include:

- Overloading the vehicle beyond its weight capacity.
- Uneven weight distribution, leading to instability.
- Inadequate securing of cargo, increasing the risk of shifting during transit.
- Failure to account for the specific requirements of different types of cargo.

5. What role does technology play in the 3486 safe loading assessment v2?

Technology plays a significant role in enhancing the assessment process by providing tools for:

- Accurate measurement of load weight and distribution.
- Monitoring vehicle performance and stability during loading.
- Utilizing software applications for documentation and compliance tracking.
- Training personnel through interactive modules and simulations.

6. Are there specific training requirements for personnel involved in loading operations?

Yes, personnel involved in loading operations should undergo specific training that covers:

- Safe loading practices and principles.
- Understanding vehicle specifications and weight limits.
- Techniques for securing various types of cargo.
- Emergency procedures in case of accidents or cargo failure.

Best Practices for Safe Loading

To complement the insights gained from the 3486 safe loading assessment v2 answers, here are some best practices for ensuring safe loading operations:

- **Conduct a Pre-Loading Inspection:** Ensure that both the vehicle and the cargo are in good condition before loading begins.
- **Use Proper Equipment:** Utilize the correct tools and equipment for loading and securing cargo, such as straps, nets, and pallets.
- **Load Strategically:** Place heavier items at the bottom and center of the load to maintain vehicle stability.
- **Secure the Load:** Ensure that all cargo is appropriately secured using methods that prevent shifting during transit.
- **Follow Regulatory Guidelines:** Familiarize yourself with and adhere to all relevant laws and regulations regarding load limits and securing cargo.
- **Maintain Clear Communication:** Ensure that all team members are aware of their roles and responsibilities during the loading process.

Conclusion

The **3486 safe loading assessment v2 answers** provide valuable insights into the practices and principles necessary for ensuring safe loading operations. By understanding the importance of these assessments, adhering to best practices, and continually training personnel, organizations can enhance safety, protect cargo, and comply with regulatory standards. As industries evolve, staying informed about updates to safe loading assessments and integrating technology will be crucial for maintaining safety and efficiency in the transport of goods.

Frequently Asked Questions

What is the purpose of the 3486 safe loading assessment v2?

The 3486 safe loading assessment v2 is designed to evaluate the safety and compliance of loading operations to prevent accidents and ensure the safe transport of goods.

Who is responsible for conducting the 3486 safe loading assessment?

The assessment should be conducted by qualified personnel, typically including safety

officers or load planners, who have the necessary training and experience in loading operations.

What are the key components of the 3486 safe loading assessment v2?

Key components include assessment of load distribution, securing methods, vehicle specifications, and adherence to regulatory guidelines.

How often should the 3486 safe loading assessment be performed?

The assessment should be performed regularly, especially before major loading operations or when there are changes in load types, vehicle specifications, or regulations.

What are common mistakes to avoid during the 3486 safe loading assessment?

Common mistakes include neglecting to check load distribution, failing to secure loads properly, and not considering vehicle capacity and specifications.

How can technology aid in the 3486 safe loading assessment?

Technology can aid by providing software solutions for load planning, real-time monitoring of load conditions, and ensuring compliance with safety regulations.

What impact does the 3486 safe loading assessment have on operational efficiency?

A thorough assessment can improve operational efficiency by reducing the risk of accidents, minimizing delays, and ensuring compliance with safety standards, ultimately leading to smoother loading operations.

Where can I find the latest version of the 3486 safe loading assessment guidance?

The latest version can typically be found on industry regulatory websites, safety organizations, or through training providers that specialize in loading safety assessments.

Find other PDF article:

<https://soc.up.edu.ph/06-link/files?ID=KJe74-4406&title=answers-to-my-spanish-lab-homework.pdf>

3486 Safe Loading Assessment V2 Answers

Buy Trees, Shrubs & Perennials Online | Nature Hills Nursery

America's trusted online nursery for trees, shrubs, fruit plants & perennials. 2,000+ varieties, zone-matched advice, live-plant guarantee—shop Nature Hills.

Buy Trees Online With Free Shipping | The Tree Center™

Choose from hundreds of varieties of trees and shrubs not available at your local nursery - all from the comfort of your couch. Skip the trip and plan your landscape like it's 2025!

TN Nursery | Online Plant Nursery | Tree Nursery

Shop TN Nursery for native trees, shrubs, perennials, ferns and grasses—field-grown, expertly packed, and shipped fast nationwide for garden success. Shop now!

Bare Root Trees: Seedlings & Saplings | Chief River Nursery

Our trusted bare root tree nursery offers a wide range of bare root saplings and tree seedlings for sale. Our plants are carefully cultivated for their adaptability and ability to thrive, ensuring ...

Spring Hill Nurseries | Find your Inspiration- Online Nursery

Our online nursery offers plants, trees, bulbs, & tips for managing it all. Since 1849, Spring Hill has been trusted by gardeners for our quality products.

Trees for Sale at the Arbor Day Tree Nursery - Arbor Day ...

Buy trees online in the tree nursery at arborday.org. We offer quality bare root trees for low prices. Members save even more. We offer over 150 shade, nut, fruit, ornamental, and evergreen ...

Order Fruit Trees Online | Mail Order Nursery - Raintree Nursery

Raintree Nursery offers quality nursery products. Order trees, plants, and supplies online now. Order now for fast growing, rare fruiting plant varieties.

PlantingTree

Shop our online nursery and have plants delivered to your home. From mature trees for sale to premium plants for sale, we have the largest selection of plants and trees available online.

Online Tree Nursery | Plant Me Green

At PlantMeGreen.com, we ship trees and plants straight to your front door. We make your world happier, healthier, and more beautiful—one tree at a time.

Buy plants and trees online from Wilson Bros Gardens

With our safe shipping, low prices, larger plants and expert planting advice you'll be growing our plants like the pros...

DBI, Placeholders, and a nested query : r/perl - Reddit

Nov 2, 2022 · DBI, Placeholders, and a nested query Edit: Solution found and described below. Hello all, I'm attempting to insert/update into an MSSQL database. The source of the data is ...

SQLite - can I use placeholder for table names? - Reddit

Sep 10, 2020 · SQLite - can I use placeholder for table names? I'm looping and with each loop I manipulate data and then save it to different CSV file. Now I'm trying to do the same with ...

Reddit - Dive into anything

Reddit is a network of communities where people can dive into their interests, hobbies and passions. There's a community for whatever you're interested in on Reddit.

Url submission : r/duckduckgo - Reddit

Jan 12, 2020 · Url submission When I submitting url in bang submission in duck duck go it saying this - Please add a query placeholder like { { {s}}} in the URL. Please help me

Using named placeholders in queries and PSQL's :alnum: at the

Apr 4, 2022 · Executing this yields the error: ActiveRecord::PreparedStatementInvalid (missing value for :alnum in SELECT) In other words, Rails thinks that :alnum is a named placeholder. ...

Is this good/safe to use placeholder like this - Reddit

Aug 2, 2022 · I'm trying to take one input parameter which is username or email for sign in purposes. This is submitted to a single input which gonna accept email or username. The ...

Polls when I add new participants to the group : r/whatsapp

Oct 31, 2023 · Polls when I add new participants to the group I created a poll on a group, some people voted, but then I added new members. How can I make them see the poll to vote?

Tricks to searching on Facebook Marketplace - Reddit

Tricks to searching on Facebook Marketplace - Sort by date, newest, and more (Desktop)

So I Found This Website. Can You Help Me Decode It?

May 1, 2018 · Posted by u/[Deleted Account] - 2 votes and 1 comment

Can you add an array as an SQLite query placeholder? : r/node

Jan 3, 2021 · Posted by u/VeryKnave - 1 vote and 4 comments

Unlock the secrets to the 3486 safe loading assessment v2 answers! Get clear insights and expert tips to excel. Learn more now for success!

[Back to Home](#)