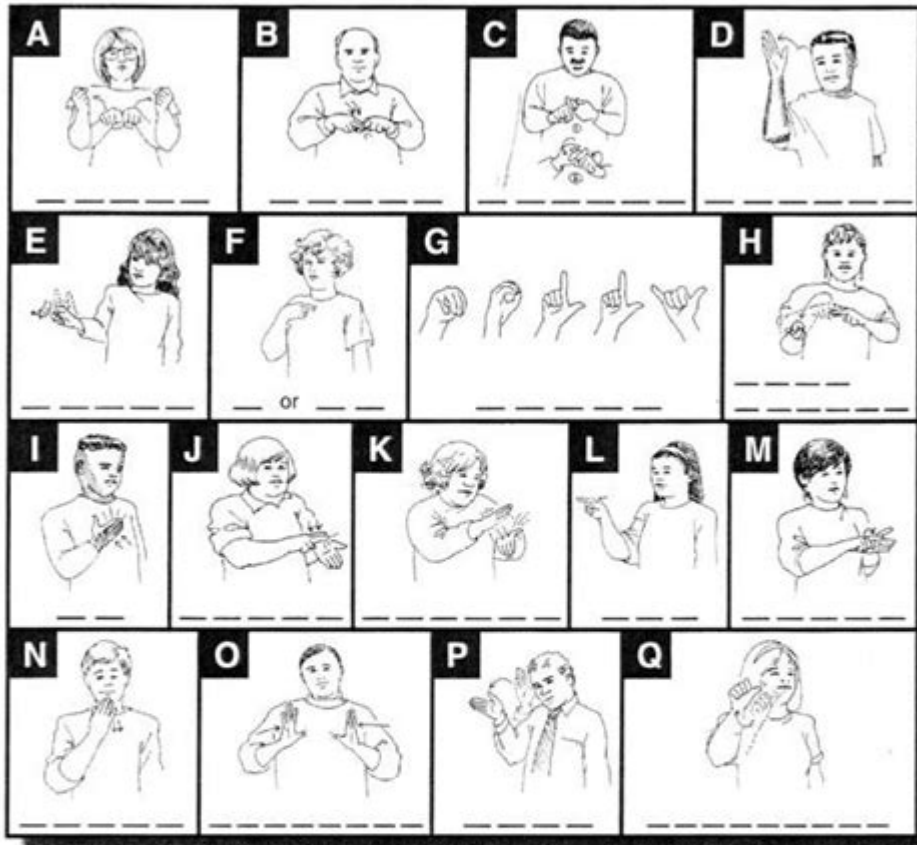


34 Worksheet Part 2 Asl

D18 Sentence-Building Puzzle

Write the English gloss for each sign inside its box. Then look at the English sentences below the signs and write the sentences again in ASL sentence order. Some of the signs will be used more than once.



1. The chair is green.

2. My friend is a nurse.

3. Molly is sweet.

4. In the future I will lose weight.

5. I broke the chair at school.

6. School vacation started yesterday.

34 worksheet part 2 asl is a resource that delves into American Sign Language (ASL) education, providing learners with practical exercises and activities to improve their signing skills. This article will explore the significance of ASL worksheets, the components of the 34 worksheet part 2, and effective strategies for mastering ASL through structured practice. We will also discuss the benefits of learning ASL and how worksheets can enhance the learning experience.

Understanding ASL and Its Importance

American Sign Language is a visual language that uses hand shapes, facial expressions, and body movements to convey meaning. Learning ASL is not only important for communication with the Deaf and hard-of-hearing community but also enriches understanding of cultural diversity.

Benefits of Learning ASL

1. **Communication Accessibility:** ASL allows individuals to communicate with Deaf and hard-of-hearing individuals effectively.
2. **Cultural Awareness:** Engaging with ASL fosters a deeper appreciation of Deaf culture and history.
3. **Cognitive Benefits:** Learning a new language, including ASL, can improve cognitive function and enhance memory.
4. **Career Opportunities:** Proficiency in ASL can open doors in various fields, such as education, healthcare, and social work.

The Structure of 34 Worksheet Part 2 ASL

The 34 worksheet part 2 ASL is designed to build on foundational skills established in part 1. This section provides various activities that focus on vocabulary expansion, grammar, and conversational skills.

Components of the Worksheet

1. **Vocabulary Lists:** Each worksheet typically includes a list of new signs to learn, often categorized by themes (e.g., food, emotions, family).
2. **Practice Exercises:** These may include fill-in-the-blank sentences, matching exercises, and translation tasks from English to ASL and vice versa.
3. **Visual Aids:** Illustrations demonstrating signs can enhance understanding and retention.
4. **Cultural Notes:** Many worksheets provide insights into Deaf culture, which is crucial for contextual understanding of the language.
5. **Review Sections:** At the end of the worksheet, review sections help reinforce what has been learned.

Effective Strategies for Using 34 Worksheet Part 2 ASL

To maximize learning with the 34 worksheet part 2 ASL, consider the following strategies:

1. Set Clear Learning Goals

- Define what you want to achieve with each worksheet. This could be mastering a certain number of signs or improving your ability to construct sentences in ASL.
- Break down larger goals into smaller, manageable tasks to keep motivation high.

2. Engage with Visual Learning

- ASL is inherently visual, so utilize videos or in-person demonstrations when practicing signs.
- Pair the vocabulary lists with videos from reputable ASL resources to see the signs in action.

3. Practice Regularly with a Partner

- Find a study buddy or join a conversation group focused on ASL. Practicing with others can help reinforce learning.
- Use the vocabulary from the worksheets in real conversations to enhance retention and confidence.

4. Incorporate Technology

- Use apps and online platforms that focus on ASL learning to complement the worksheets.
- Record yourself signing to track progress and improve your technique.

5. Reflect on Cultural Context

- Whenever you encounter cultural notes in the worksheets, take time to research further. Understanding the cultural context can deepen your appreciation for the language.
- Attend Deaf community events or workshops to immerse yourself in the culture.

Activities to Enhance ASL Learning

In addition to the structured exercises found in the 34 worksheet part 2 ASL, incorporating diverse activities can significantly enhance the learning experience.

1. Role-Playing Scenarios

- Create role-playing scenarios where you and your partner must use ASL to communicate. This mimics real-life conversations and challenges you to think on your feet.
- Examples of scenarios include ordering at a restaurant, asking for directions, or discussing hobbies.

2. Storytelling in ASL

- Choose a short story or create an original narrative and practice telling it in ASL. This exercise enhances fluency and narrative skills.
- Focus on using facial expressions and body language to convey emotions and actions effectively.

3. ASL Games

- Engage in games like charades using ASL signs, where players must guess the sign being acted out.
- Use flashcards with ASL signs and have a quick recall challenge with a partner to enhance vocabulary retention.

4. Watching ASL Interpreted Videos

- Find videos that include ASL interpretation, such as music videos or educational content, and watch them to observe how signs are used in context.
- Try to sign along with the interpreter to practice fluidity and speed.

Assessing Your Progress

As you work through the 34 worksheet part 2 ASL, it's important to assess your progress regularly.

1. Self-Evaluation

- After completing each worksheet, take a moment to evaluate what you learned. Identify areas where you feel confident and areas that may require additional practice.
- Keep a journal of your learning journey, noting new signs and concepts you've mastered.

2. Seek Feedback

- If possible, obtain feedback from a fluent ASL user or instructor. They can provide insights into your signing technique and areas for improvement.
- Participate in ASL meetups or online forums to connect with other learners and share experiences.

3. Set New Challenges

- As you become more comfortable with your skills, challenge yourself with more complex sentences and conversations.
- Continuously seek new materials, such as advanced worksheets or literature in ASL, to keep your learning dynamic.

Conclusion

The 34 worksheet part 2 ASL is a vital tool for those looking to enhance their skills in American Sign Language. By utilizing structured exercises, engaging in cultural learning, and regularly practicing with peers, learners can foster a deeper understanding of ASL and its significance. The journey of learning ASL is not just about acquiring a new language; it's about connecting with a community, celebrating diversity, and promoting inclusivity. As you continue on this path, remember that practice, patience, and persistence are key to mastering this beautiful and expressive language.

Frequently Asked Questions

What is '34 worksheet part 2' in the context of ASL?

'34 worksheet part 2' typically refers to an educational resource or assignment related to American Sign Language (ASL) that focuses on specific vocabulary, grammar, or cultural aspects.

How can I access the '34 worksheet part 2' for ASL?

The '34 worksheet part 2' can often be found on educational websites, ASL learning platforms, or through instructors in ASL courses. Check with your teacher or search for resources online.

What topics might be covered in '34 worksheet part 2' for ASL?

Topics may include vocabulary building, sentence structure, fingerspelling practice, cultural insights, and interpreting exercises related to ASL.

Is '34 worksheet part 2' suitable for beginners in ASL?

Yes, '34 worksheet part 2' is often designed to cater to different skill levels, including beginners, and may provide foundational knowledge and practice opportunities.

How can I effectively use '34 worksheet part 2' to improve my ASL skills?

To improve your ASL skills using '34 worksheet part 2', practice regularly, engage with the material actively, and consider pairing the worksheets with video resources for visual learning.

Are there any online communities where I can discuss '34 worksheet part 2' ASL?

Yes, online communities such as Facebook groups, Reddit forums, or ASL learning platforms often have spaces for discussion where you can share insights and ask questions about worksheets and ASL learning.

Can '34 worksheet part 2' be used for group learning in ASL?

'34 worksheet part 2' is ideal for group learning, as it can facilitate collaborative exercises, discussions, and practice sessions among peers learning ASL together.

Find other PDF article:

<https://soc.up.edu.ph/61-page/files?trackid=YxL34-7117&title=the-science-of-happiness.pdf>

[34 Worksheet Part 2 Asl](#)

File Explorer in Windows - Microsoft Support

File Explorer in Windows 11 helps you get the files you need quickly and easily. To check it out in Windows 11, select it on the taskbar or the Start menu, or press the Windows logo key + E on ...

Explorer unter Windows - Microsoft-Support

Schnellzugriffs Ab Windows 11 Version 22H2 sind die bekannten Windows-Ordner – Desktop, Dokumente, Downloads, Bilder, Musik und Videos – standardmäßig als angeheftete Ordner im ...

Esplora file in Windows - Supporto tecnico Microsoft

Esplora file in Windows 11 consente di ottenere rapidamente e facilmente i file necessari. Per scoprirlo in Windows 11, selezionalo sulla barra delle applicazioni o nel menu Start oppure ...

Fix File Explorer if it won't open or start - Microsoft Support

To open File Explorer in Windows 11, select File Explorer on the taskbar or press the Windows logo key + E on your keyboard. Here are some things to try if File Explorer won't open.

Zip and unzip files - Microsoft Support

Zipped (compressed) files take up less storage space and can be transferred to other computers more quickly than uncompressed files. In Windows, you work with zipped files and folders in ...

File Explorer di Windows - Dukungan Microsoft

Temukan dan buka File Explorer di Windows, serta kustomisasi Akses cepat dengan menyematkan dan menghapus file dan folder.

Change Folder Sort by View in Windows 11 File Explorer

Sep 8, 2021 · In Windows 11, you can change the sort by view of a folder in File Explorer to have all items in the folder sorted by the name, date, date modified, size, type, and more file detail ...

Search in Windows 11 File Explorer

Jan 21, 2024 · As you type in the Search Box, Windows Search will automatically start a simple search through the index by default to match your typed text with folder names, files names, ...

Delete a file - Microsoft Support

The best way to delete your files is to use the Windows File Explorer. Delete a file by using File Explorer Open a File Explorer window. Tip: A quick way to get to File Explorer is to press ...

Find your files in Windows - Microsoft Support

Search File Explorer: Open File Explorer from the taskbar or select and hold the Start menu (or right-click), select File Explorer , then select a search location: To quickly find relevant files ...

Credit Card, Mortgage, Banking, Auto | Chase Online | Chase.com

Chase online lets you manage your Chase accounts, view statements, monitor activity, pay bills or transfer funds securely from one central place. To learn more, visit the Banking Education Center.

Browse Your Offers | Chase

Sign in to browse current offers for Chase products and services available specifically to you.

Log In - Chase

Log In Login Name Password LOGIN Remember My Login Forgot password? Forgot Token Pin? Forgot Username?

Online Bill Pay | Personal Banking | Chase

Sign in to Chase Online or the Chase Mobile ® app and choose “Pay bills” then “Schedule payment” in the navigation menu. Choose your payee, enter the amount, “Pay from” account and ...

Chase Secure Banking | Checking Account With No Overdraft Fees | Chase.com

Enroll in Chase Online SM or on the Chase Mobile app. Deposits made through the Chase Mobile app are subject to deposit limits and funds are typically available by next business day.

Sign In - Chase

JPMorgan Chase & Co. Authentication is required Please login with your desktop password to continue Sign in

online-banking - Chase.com

Sign in to your chase.com account and choose the account that you would like to see. The Account Activity page displays your payment and deposit information with your present and available ...

Chase Online | Chase for Business

However, you can enroll in Chase Online through chase.com or the Chase Mobile ® app. You can use the ATM & branch locator, as well as access Chase contact information, without being ...

Cardholder Portal - Chase

Securely log in to manage your Chase cardholder account online with ease and convenience.

Enroll in Chase Online Banking | Chase

Chase online lets you manage your Chase accounts, view statements, monitor activity, pay bills or transfer funds securely from one central place. To learn more, visit the Banking Education Center.

Explore our comprehensive guide on the 34 worksheet part 2 ASL

[Back to Home](#)