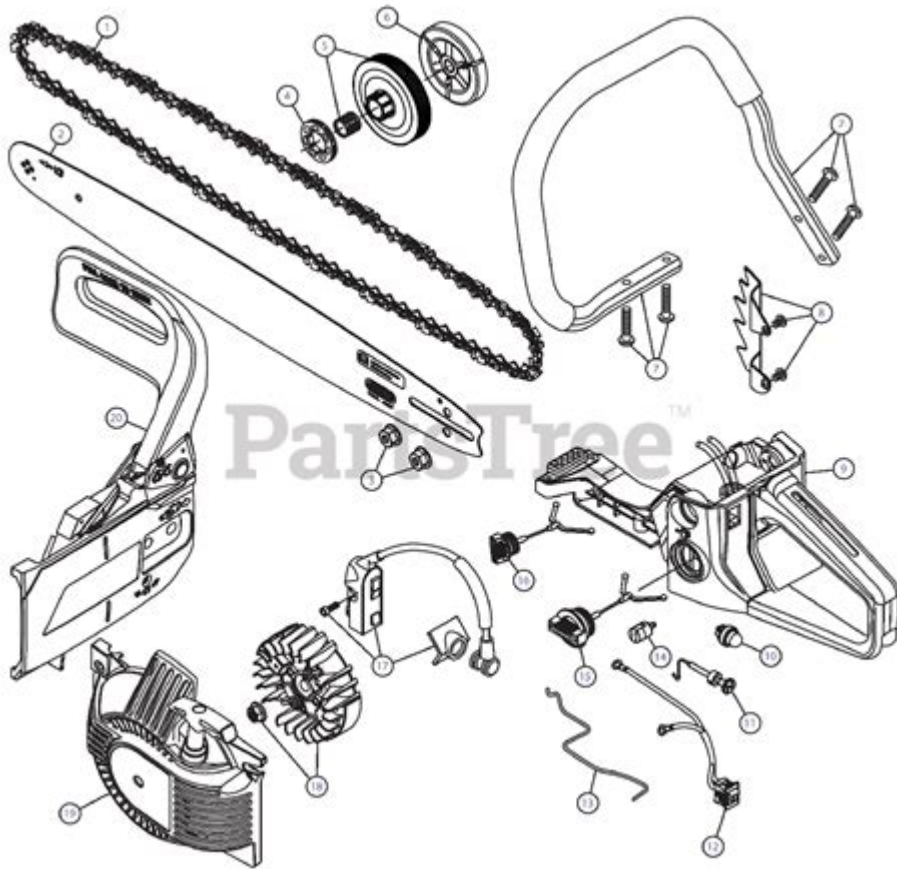


42cc Craftsman Chainsaw Parts Diagram



42cc Craftsman Chainsaw Parts Diagram is essential for anyone looking to understand the inner workings of their chainsaw, troubleshoot issues, or perform maintenance. A well-functioning chainsaw is a crucial tool for homeowners and professionals alike, and knowing the parts and how they fit together can greatly enhance your ability to keep it running smoothly. In this article, we will delve into the components of the 42cc Craftsman chainsaw, provide a comprehensive parts diagram, and discuss maintenance tips to ensure longevity and efficiency.

Understanding the 42cc Craftsman Chainsaw

The 42cc Craftsman chainsaw is a popular model known for its reliability and power. It is designed for a variety of cutting tasks, from tree trimming to firewood cutting. Understanding the parts of this chainsaw is vital for effective use and maintenance.

Key Components of the 42cc Craftsman Chainsaw

The primary components of a chainsaw include the engine, bar, chain, ignition system, and various other parts that work in unison to make the tool effective. Below, we will outline these essential parts:

- **Engine:** The 42cc engine is the heart of the chainsaw, providing the necessary power to drive the chain.
- **Guide Bar:** This is the long metal bar that holds the chain in place and guides it during cutting.
- **Chain:** The sharpened links that cut through wood when the chainsaw is in operation.
- **Fuel Tank:** Holds the fuel mixture needed for the engine to operate.
- **Oil Tank:** Contains the bar and chain oil that lubricates the chain and guide bar.
- **Air Filter:** Prevents dirt and debris from entering the engine, ensuring optimal performance.
- **Ignition System:** Responsible for igniting the fuel-air mixture, usually comprising a spark plug and ignition coil.
- **Starter Mechanism:** The pull-start system that engages the engine to start it.

42cc Craftsman Chainsaw Parts Diagram

Understanding the parts diagram of the 42cc Craftsman chainsaw is crucial for maintenance and repairs. The diagram visually represents each component, making it easier to identify parts when performing assembly, disassembly, or replacement.

Where to Find the Parts Diagram

You can find the parts diagram for the 42cc Craftsman chainsaw in several places:

1. **Owner's Manual:** The manual that comes with your chainsaw typically includes a parts diagram.
2. **Manufacturer's Website:** Craftsman's official website often provides downloadable parts diagrams and manuals.
3. **Online Retailers:** Websites that sell chainsaw parts may also host diagrams for reference.
4. **Repair Shops:** Many local repair shops have access to parts diagrams and can provide assistance.

Common Parts and Their Functions

Here are some of the most common parts you will encounter in the 42cc Craftsman chainsaw, along with their functions:

- **Chain Brake:** A safety feature that stops the chain in case of kickback.
- **Clutch:** Engages and disengages the chain from the engine, allowing for idle operation without the chain moving.
- **Throttle Trigger:** Controls the engine speed and chain rotation speed.
- **Choke Lever:** Helps start the engine by restricting airflow, making it easier to start in cold conditions.
- **Fuel Filter:** Prevents debris from entering the fuel system, ensuring clean fuel reaches the engine.

Maintenance Tips for Your 42cc Craftsman Chainsaw

Proper maintenance is crucial for the longevity and performance of your 42cc Craftsman chainsaw. Here are some tips to keep it in top shape:

Regular Cleaning

Make it a habit to clean your chainsaw after each use. Focus on the following areas:

- Bar and Chain: Remove sawdust and debris.
- Air Filter: Clean or replace as necessary.
- Fuel System: Ensure that there are no leaks or blockages.

Chain Maintenance

The chain is one of the most critical components of your chainsaw. Regularly inspect it for the following:

- Sharpness: A dull chain can strain the engine. Sharpen it regularly.
- Tension: The chain should be snug but not overly tight.
- Lubrication: Ensure the oil tank is filled with quality bar and chain oil to keep it lubricated.

Inspect and Replace Worn Parts

Over time, certain parts will wear out and need replacement. Regularly check the following:

- Spark Plug: Replace if worn or fouled.
- Fuel Filter: Clean or replace to ensure proper fuel flow.
- Air Filter: Change if dirty or damaged.

Conclusion

Understanding the **42cc Craftsman chainsaw parts diagram** is vital for any chainsaw owner. Familiarity with the major components, their functions, and how to maintain them can significantly enhance your chainsaw's performance and lifespan. Regular maintenance, combined with knowledge of your chainsaw's part anatomy, will ensure that your tool remains a reliable asset for all your cutting needs. Whether you're a seasoned professional or a weekend warrior, taking the time to understand your equipment is a worthy investment.

Frequently Asked Questions

What is the purpose of the parts diagram for a 42cc Craftsman chainsaw?

The parts diagram helps users identify and locate different components of the chainsaw for maintenance, repairs, and replacement.

Where can I find the parts diagram for my 42cc Craftsman chainsaw?

You can find the parts diagram on the official Craftsman website, in the user manual, or through authorized dealers and repair shops.

What common parts are included in the 42cc Craftsman chainsaw parts diagram?

Common parts include the chain, bar, engine components, air filter, spark plug, and housing parts.

How can I use the parts diagram to troubleshoot my 42cc Craftsman chainsaw?

By referencing the parts diagram, you can pinpoint which components may be malfunctioning or need replacement based on the symptoms you're experiencing.

Are there any online resources for purchasing parts for a 42cc Craftsman chainsaw?

Yes, websites like eBay, Amazon, and specialty tool retailers often sell replacement parts, and they may also provide access to parts diagrams.

Can I repair my 42cc Craftsman chainsaw using the parts diagram even if I'm not a mechanic?

Yes, the parts diagram can be a helpful guide for DIY repairs, but it's important to follow safety guidelines and consult additional resources if needed.

Find other PDF article:

<https://soc.up.edu.ph/63-zoom/pdf?ID=kOM84-2721&title=trouble-at-the-dinosaur-cafe.pdf>

[42cc Craftsman Chainsaw Parts Diagram](#)

YouTube

Enjoy the videos and music you love, upload original content, and share it all with friends, family, and the world on YouTube.

YouTube Help - Google Help

Official YouTube Help Center where you can find tips and tutorials on using YouTube and other answers to frequently asked questions.

YouTube - Apps on Google Play

Enjoy your favorite videos and channels with the official YouTube app.

Music

Visit the YouTube Music Channel to find today's top talent, featured artists, and playlists. Subscribe to see the latest in the music world. This channel was generated automatically by...

YouTube

About Press Copyright Contact us Creators Advertise Developers Terms Privacy Policy & Safety How YouTube works Test new features NFL Sunday Ticket © 2025 Google LLC

Trending - YouTube

The pulse of what's trending on YouTube. Check out the latest music videos, trailers, comedy clips, and everything else that people are watching right now.

YouTube - Wikipedia

YouTube is an American social media and online video sharing platform owned by Google. YouTube was founded on February 14, 2005, [7] by Chad Hurley, Jawed Karim, and Steve ...

YouTube Kids - An App Created for Kids to Explore Content

YouTube Kids was created to give kids a more contained environment that makes it simpler and more fun for them to explore on their own, and easier for parents and caregivers to guide their...

YouTube Music

With the YouTube Music app, enjoy over 100 million songs at your fingertips, plus albums, playlists, remixes, music videos, live performances, covers, and hard-to-find music you can't get...

YouTube - App on Amazon Appstore

Supports multiple accounts - Everyone at home can sign into YouTube with a Google account to see recommendations, subscriptions, and playlists. Play YouTube videos from your phone on ...

Twitch Studio Beta hohe CP...

Mar 29, 2021 · Ich streame also seit einem Monat mit ...

So könnt ihr ein Backup von e...

Oct 22, 2024 · Sucht den Ordner obs-studio raus und ...

Probleme mit Sichtbarkeit i...

Feb 9, 2023 · Bei Twitch Studio gibt es so gesehen 2 ...

OBS..... ...

OBS.....“..... ...

[BRAUCHE HILFE] Kein In...

May 7, 2021 · Hallo zusammen, ich hoffe ihr könnt uns ...

Explore the 42cc Craftsman chainsaw parts diagram for easy identification and replacement of components. Discover how to maintain your chainsaw effectively!

[Back to Home](#)