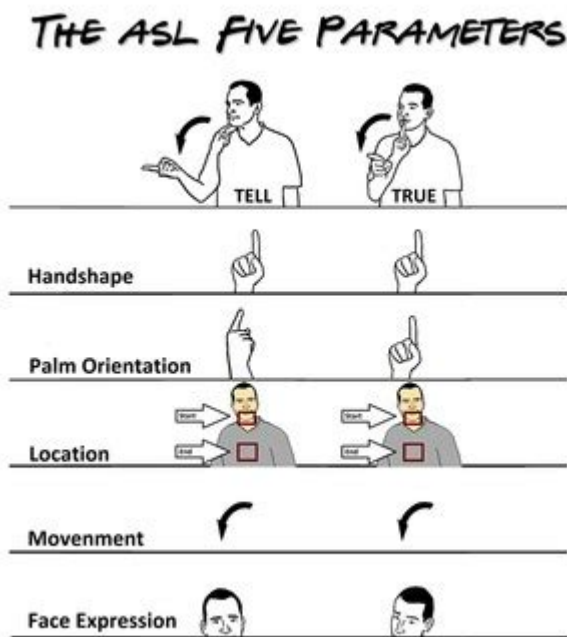


5 Parameters Of Sign Language



Sign language is a visual means of communication that employs hand shapes, movements, facial expressions, and body language to convey meaning. It is a vital language for the deaf and hard-of-hearing community, allowing them to express thoughts, emotions, and information effectively. Understanding the parameters of sign language is essential for both learners and users, as these parameters form the foundation of how signs are structured and understood. This article explores the five primary parameters of sign language, providing insight into their significance and application.

1. Handshape

Handshape is one of the most fundamental parameters in sign language. It refers to the specific configuration of the fingers and the palm when creating a sign. Different languages and dialects of sign language may utilize a variety of handshapes to represent different words and concepts.

Types of Handshapes

In sign languages, handshapes can range from simple to complex. Some common types of handshapes include:

- Flat hand: Often used for signs related to surfaces or flat objects.
- Fist: Frequently used for signs that involve actions like hitting or punching.
- Open hand: Common in signs that indicate direction or location.

- Claw hand: Used in signs representing animals or specific actions.

Each handshape can also have different meanings depending on its context within a sign. For instance, the same handshape might signify different words based on accompanying movements or facial expressions.

2. Location

The location is another critical parameter that refers to where a sign is produced in relation to the signer's body. The placement of signs can drastically change their meaning and is often determined by the context of the conversation.

Understanding Location

The location of a sign can be categorized into the following:

- Neutral space: The area in front of the signer where most signs are produced.
- Body signs: Signs that are produced on or near the body, often indicating personal actions or feelings.
- Spatial referencing: The use of location to refer to people or objects in a signed conversation, allowing for clarity in storytelling and dialogue.

The significance of location in sign language cannot be overstated, as it helps convey relationships between different characters or objects within a narrative.

3. Movement

Movement is a dynamic parameter that involves the motion of the hands and arms while signing. It not only contributes to the meaning of a sign but can also indicate tense, aspect, or the intensity of an action.

Types of Movements

Movement in sign language can be classified into several types:

- Straight movement: A direct path from one point to another, often used in directional signs.
- Circular movement: A motion that describes a circular path, which can indicate ongoing actions or repetitive tasks.
- Repeated movement: The act of repeating a sign in succession to emphasize an idea or concept.

Understanding how movement works in conjunction with other parameters is crucial for

proficient sign language communication. Incorrect movement can lead to misunderstandings or completely different meanings from what was intended.

4. Palm Orientation

Palm orientation refers to the direction in which the palm faces during the production of a sign. This parameter can significantly alter the meaning of a sign and is essential for distinguishing between similar signs that differ only in palm orientation.

Common Orientations

Palm orientations can include:

- Palm up: Typically used when the sign involves offering or presenting something.
- Palm down: Often used in signs related to actions or commands.
- Palm sideways: Can indicate specific relationships or actions that involve lateral movements.

Correctly interpreting palm orientation is vital for effective communication. For example, the sign for "thank you" in American Sign Language (ASL) involves a forward palm orientation, while a sign for "sorry" may involve a palm-down orientation.

5. Non-manual Signals

Non-manual signals (NMS) encompass facial expressions, head movements, and other body language cues that accompany signs. These signals play a critical role in adding nuance and emotion to signed communication, akin to intonation in spoken language.

Functions of Non-manual Signals

Non-manual signals serve multiple functions, including:

- Facial expressions: Conveying emotions such as happiness, sadness, anger, or surprise, which can change the meaning of a sign.
- Head movements: Indicating affirmation or negation, often by nodding or shaking the head while signing.
- Body posture: The positioning of the body can affect the context or intensity of the message being conveyed.

Mastering non-manual signals is essential for achieving fluency in sign language. They contribute to the richness of the language and help to convey subtleties that may not be captured by the signs alone.

Conclusion

In summary, the five parameters of sign language—handshape, location, movement, palm orientation, and non-manual signals—are integral components that work together to form meaningful communication. Each parameter plays a distinct role, and understanding how they interact is crucial for anyone looking to become proficient in sign language.

As sign language continues to gain recognition and acceptance in various societies, it is important to acknowledge the complexity and beauty of this visual language. By appreciating the intricacies of the five parameters, learners and users alike can enhance their communication skills and foster deeper connections within the deaf and hard-of-hearing community. Sign language is not just a means of communication; it is a vibrant language that reflects culture, identity, and human connection.

Frequently Asked Questions

What are the five parameters of sign language?

The five parameters of sign language are handshape, location, movement, palm orientation, and facial expressions.

How does handshape influence sign language?

Handshape refers to the specific configuration of the hands used in signs, which can change the meaning of a sign significantly.

What role does location play in sign language?

Location refers to where the sign is made in relation to the body, and it can alter the meaning of the sign or indicate different grammatical aspects.

Can you explain the importance of movement in sign language?

Movement in sign language involves the motion of the hands and arms, which conveys meaning and can indicate tense or questions.

What is palm orientation and why is it important?

Palm orientation describes the direction the palm faces during a sign; it is crucial as it can change the meaning of the sign.

How do facial expressions contribute to sign language?

Facial expressions add emotional context, grammatical information, and help convey questions or negations in sign language.

Are the parameters of sign language the same across all sign languages?

While the five parameters are common in many sign languages, specific signs and their meanings can vary significantly between different sign languages.

How can understanding the five parameters improve sign language skills?

Understanding the five parameters helps learners create clearer, more accurate signs and enhances their ability to communicate effectively in sign language.

What challenges might arise when learning the five parameters of sign language?

Challenges may include mastering the subtle differences in handshapes, movements, and facial expressions, as well as retaining the unique grammatical structures of sign language.

Find other PDF article:

<https://soc.up.edu.ph/62-type/pdf?docid=TaK05-0538&title=tiny-boobs-big-tits-history.pdf>

5 Parameters Of Sign Language

-

Aug 19, 2024 · 1 5 5 2 2 1000 800 80% 2 ...

2025 7월 RTX 5060

Jun 30, 2025 · 1080P/2K/4K RTX 5060 25

□□□□“●”□□□□□ - □□□□□

Dec 27, 2022 · Word“•”WordWPSWordWPS ...

[illegible]

Aug 15, 2014 · bigbang[bigbang] BigBang [bigbang] Ye the finally I realize that I'm nothing without you I was so ...

2025年CPU7月

Jul 1, 2025 · 2025년 CPU 점유율 CPU 점유율 CPU 점유율 CPU 점유율 CPU 점유율
CPU 점유율 CPU 점유율

2025 Gopro 13 Canon 5 Pro Insta360 ...

Jan 14, 2025 · [Gopro Insta360](#) ...

☐☐aEb ☐☐ aeb (☐ ...

Explore the 5 parameters of sign language that shape effective communication. Enhance your skills and understanding—learn more about these essential components!

[Back to Home](#)