

1 4 Study Guide And Intervention

NAME _____ DATE _____ PERIOD _____

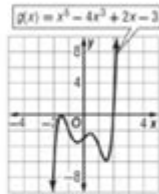
1-4 Study Guide and Intervention Extrema and Average Rates of Change

Increasing and Decreasing Behavior Functions can increase, decrease, or remain constant over a given interval. The points at which a function changes its increasing or decreasing behavior are called critical points. A critical point can be a **relative minimum**, **absolute minimum**, **relative maximum**, or **absolute maximum**. The general term for minimum or maximum is **extremum** or **extrema**.

Example: Estimate to the nearest 0.5 unit and classify the extrema for the graph of $f(x)$. Support the answers numerically.

Analyze Graphically

It appears that $f(x)$ has a relative maximum of 0 at $x = -1.5$, a relative minimum of -3.5 at $x = -0.5$, a relative maximum of -2.5 at $x = 0.5$, and a relative minimum of -6 at $x = 1.5$. It also appears that $\lim_{x \rightarrow -\infty} f(x) = -\infty$ and $\lim_{x \rightarrow \infty} f(x) = \infty$, so there appears to be no absolute extrema.



Support Numerically

Choose x -values in half-unit intervals on either side of the estimated x -value for each extremum, as well as one very small and one very large value for x .

x	-100	-2	-1.5	-1	-0.5	0	0.5	1	1.5	2	100
$f(x)$	-1×10^{10}	-7	-0.09	-2	-3.5	-3	-2.47	-4	-5.91	1	1×10^{10}

Because $f(-1.5) > f(-2)$ and $f(-1.5) > f(-1)$, there is a relative maximum in the interval $(-2, -1)$ near -1.5 .

Because $f(-0.5) < f(-1)$ and $f(-0.5) < f(0)$, there is a relative minimum in the interval $(-1, 0)$ near -0.5 .

Because $f(0.5) > f(0)$ and $f(0.5) > f(1)$, there is a relative maximum in the interval $(0, 1)$ near 0.5 .

Because $f(1.5) < f(1)$ and $f(1.5) < f(2)$, there is a relative minimum in the interval $(1, 2)$ near 1.5 .

$f(-100) < f(-1.5)$ and $f(100) > f(1.5)$, which supports the conjecture that f has no absolute extrema.

Exercises

Use a graphing calculator to approximate to the nearest hundredth the relative or absolute extrema of each function. State the x -value(s) where they occur.

1. $f(x) = 2x^6 + 2x^4 - 9x^2$

abs. min. of -5.03 at $x = -0.97$ and
at $x = 0.97$; rel. max. of 0 at $x = 0$

2. $f(x) = x^3 + 9x^2$

rel. min. of 0 at $x = 0$;
rel. max. of 108 at $x = -6$

1 4 STUDY GUIDE AND INTERVENTION IS A CRUCIAL RESOURCE FOR STUDENTS AND EDUCATORS ALIKE, PARTICULARLY IN THE REALM OF MATHEMATICS. THIS GUIDE SERVES AS AN ESSENTIAL TOOL FOR UNDERSTANDING AND MASTERING VARIOUS MATHEMATICAL CONCEPTS, RANGING FROM BASIC ARITHMETIC TO ADVANCED ALGEBRA. WITH THE INCREASING EMPHASIS ON STANDARDIZED TESTING AND ACADEMIC PERFORMANCE, UTILIZING A STRUCTURED STUDY GUIDE CAN SIGNIFICANTLY ENHANCE A STUDENT'S LEARNING EXPERIENCE. THIS ARTICLE WILL DELVE INTO THE IMPORTANCE OF STUDY GUIDES, THE COMPONENTS OF THE 1 4 STUDY GUIDE AND INTERVENTION, EFFECTIVE STUDY TECHNIQUES, AND TIPS FOR MAXIMIZING ITS BENEFITS.

UNDERSTANDING THE 1 4 STUDY GUIDE AND INTERVENTION

THE 1 4 STUDY GUIDE AND INTERVENTION IS DESIGNED TO COMPLEMENT CLASSROOM INSTRUCTION AND PROVIDE ADDITIONAL RESOURCES FOR STUDENTS STRUGGLING WITH SPECIFIC TOPICS. IT TYPICALLY ALIGNS WITH EDUCATIONAL STANDARDS AND CURRICULUM, ENSURING THAT STUDENTS HAVE ACCESS TO MATERIALS THAT REINFORCE WHAT THEY LEARN IN CLASS.

COMPONENTS OF THE 1 4 STUDY GUIDE AND INTERVENTION

THE GUIDE GENERALLY INCLUDES SEVERAL KEY COMPONENTS:

- **CONCEPT REVIEWS:** SUMMARIES OF FUNDAMENTAL CONCEPTS THAT SERVE AS FOUNDATIONAL KNOWLEDGE.
- **PRACTICE PROBLEMS:** A VARIETY OF PROBLEMS THAT ALLOW STUDENTS TO APPLY WHAT THEY HAVE LEARNED.
- **STEP-BY-STEP SOLUTIONS:** DETAILED EXPLANATIONS OF HOW TO SOLVE PROBLEMS, WHICH HELP STUDENTS UNDERSTAND THE PROCESS.
- **VISUAL AIDS:** DIAGRAMS, CHARTS, AND GRAPHS THAT ILLUSTRATE CONCEPTS VISUALLY, CATERING TO DIFFERENT LEARNING STYLES.
- **ASSESSMENT TOOLS:** QUIZZES AND TESTS THAT ALLOW STUDENTS TO EVALUATE THEIR UNDERSTANDING AND READINESS.

THE IMPORTANCE OF STUDY GUIDES IN EDUCATION

STUDY GUIDES PLAY A VITAL ROLE IN THE EDUCATIONAL PROCESS. HERE ARE SOME REASONS WHY THEY ARE IMPORTANT:

- **STRUCTURED LEARNING:** THEY PROVIDE A STRUCTURED APPROACH TO STUDYING, MAKING IT EASIER FOR STUDENTS TO FOLLOW ALONG AND RETAIN INFORMATION.
- **FOCUSED REVIEW:** GUIDES HELP STUDENTS FOCUS ON KEY CONCEPTS, ENABLING THEM TO PRIORITIZE THEIR STUDY TIME EFFECTIVELY.
- **SELF-PACED LEARNING:** STUDENTS CAN STUDY AT THEIR OWN PACE, ALLOWING THEM TO SPEND MORE TIME ON CHALLENGING AREAS.
- **BOOSTS CONFIDENCE:** FAMILIARITY WITH CONTENT THROUGH PRACTICE AND REVIEW CAN INCREASE A STUDENT'S CONFIDENCE IN THEIR ABILITIES.
- **PREPARATION FOR EXAMS:** THEY SERVE AS EXCELLENT PREPARATION TOOLS FOR QUIZZES, TESTS, AND STANDARDIZED ASSESSMENTS.

EFFECTIVE STUDY TECHNIQUES USING THE 1 4 STUDY GUIDE AND INTERVENTION

TO GET THE MOST OUT OF THE 1 4 STUDY GUIDE AND INTERVENTION, STUDENTS SHOULD EMPLOY EFFECTIVE STUDY TECHNIQUES. HERE ARE SOME STRATEGIES:

1. CREATE A STUDY SCHEDULE

ESTABLISH A CONSISTENT STUDY ROUTINE THAT DEDICATES SPECIFIC TIMES FOR WORKING WITH THE STUDY GUIDE. THIS HELPS

IN BUILDING DISCIPLINE AND ENSURES THAT STUDENTS COVER ALL NECESSARY TOPICS BEFORE EXAMS.

2. BREAK DOWN THE MATERIAL

INSTEAD OF TRYING TO STUDY EVERYTHING AT ONCE, BREAK DOWN THE MATERIAL INTO MANAGEABLE SECTIONS. FOCUS ON ONE SECTION AT A TIME AND ENSURE A THOROUGH UNDERSTANDING BEFORE MOVING ON.

3. UTILIZE PRACTICE PROBLEMS

MAKE USE OF THE PRACTICE PROBLEMS PROVIDED IN THE STUDY GUIDE. ATTEMPT TO SOLVE THEM WITHOUT LOOKING AT THE SOLUTIONS FIRST. THIS WILL REINFORCE LEARNING AND HIGHLIGHT AREAS THAT NEED FURTHER REVIEW.

4. FORM STUDY GROUPS

COLLABORATING WITH PEERS CAN ENHANCE UNDERSTANDING. DISCUSSING PROBLEMS AND CONCEPTS CAN PROVIDE NEW PERSPECTIVES AND CLARIFY DOUBTS.

5. TEACH WHAT YOU LEARN

TEACHING CONCEPTS TO SOMEONE ELSE IS AN EFFECTIVE WAY TO REINFORCE YOUR UNDERSTANDING. IT FORCES YOU TO ARTICULATE YOUR THOUGHTS AND IDENTIFY GAPS IN YOUR KNOWLEDGE.

MAXIMIZING THE BENEFITS OF THE 1 4 STUDY GUIDE AND INTERVENTION

TO TRULY BENEFIT FROM THE 1 4 STUDY GUIDE, STUDENTS SHOULD INCORPORATE THE FOLLOWING TIPS INTO THEIR STUDY HABITS:

1. STAY ORGANIZED

KEEP YOUR STUDY MATERIALS ORGANIZED. USE FOLDERS OR BINDERS TO SEPARATE DIFFERENT SECTIONS OF THE GUIDE, MAKING IT EASY TO FIND AND REVIEW SPECIFIC TOPICS.

2. TAKE NOTES

WHILE USING THE STUDY GUIDE, TAKE NOTES ON KEY CONCEPTS, FORMULAS, AND PROBLEM-SOLVING TECHNIQUES. WRITING DOWN INFORMATION CAN ENHANCE RETENTION.

3. PRACTICE REGULARLY

REGULAR PRACTICE IS ESSENTIAL FOR MASTERING MATHEMATICAL CONCEPTS. SCHEDULE TIME EACH WEEK TO WORK ON PROBLEMS AND REVIEW WHAT YOU HAVE LEARNED.

4. SEEK HELP WHEN NEEDED

IF YOU ENCOUNTER DIFFICULTIES WITH CERTAIN TOPICS, DON'T HESITATE TO SEEK HELP. THIS COULD BE FROM A TEACHER, TUTOR, OR EVEN ONLINE RESOURCES.

5. REVIEW AND REVISE

MAKE IT A HABIT TO REVIEW PREVIOUS TOPICS REGULARLY. REVISING HELPS TO REINFORCE KNOWLEDGE AND ENSURES THAT YOU RETAIN INFORMATION OVER THE LONG TERM.

CONCLUSION

IN CONCLUSION, THE **'1 4 STUDY GUIDE AND INTERVENTION'** IS AN INVALUABLE RESOURCE THAT CAN HELP STUDENTS ENHANCE THEIR UNDERSTANDING OF MATHEMATICAL CONCEPTS. BY UTILIZING ITS STRUCTURED APPROACH, ENGAGING WITH THE MATERIAL THROUGH PRACTICE, AND EMPLOYING EFFECTIVE STUDY TECHNIQUES, STUDENTS CAN IMPROVE THEIR ACADEMIC PERFORMANCE AND BUILD CONFIDENCE IN THEIR ABILITIES. WHETHER PREPARING FOR AN EXAM OR SEEKING TO STRENGTHEN THEIR KNOWLEDGE, THE STUDY GUIDE SERVES AS A COMPREHENSIVE TOOL THAT CAN MAKE A SIGNIFICANT DIFFERENCE IN A STUDENT'S EDUCATIONAL JOURNEY.

FREQUENTLY ASKED QUESTIONS

WHAT IS THE PURPOSE OF THE '1 4 STUDY GUIDE AND INTERVENTION'?

THE '1 4 STUDY GUIDE AND INTERVENTION' IS DESIGNED TO HELP STUDENTS UNDERSTAND AND APPLY KEY CONCEPTS IN MATHEMATICS, PROVIDING ADDITIONAL PRACTICE AND INTERVENTION STRATEGIES TO REINFORCE LEARNING.

WHAT TOPICS ARE TYPICALLY COVERED IN THE '1 4 STUDY GUIDE AND INTERVENTION'?

THE GUIDE OFTEN COVERS TOPICS SUCH AS ALGEBRAIC EXPRESSIONS, EQUATIONS, FUNCTIONS, AND PROBLEM-SOLVING TECHNIQUES RELEVANT TO THE CURRICULUM.

HOW CAN STUDENTS EFFECTIVELY USE THE '1 4 STUDY GUIDE AND INTERVENTION' FOR EXAM PREPARATION?

STUDENTS CAN USE THE GUIDE BY REVIEWING KEY CONCEPTS, WORKING THROUGH PRACTICE PROBLEMS, AND UTILIZING INTERVENTION STRATEGIES TO ADDRESS AREAS WHERE THEY MAY STRUGGLE.

ARE THERE ANY ONLINE RESOURCES AVAILABLE FOR THE '1 4 STUDY GUIDE AND INTERVENTION'?

YES, MANY EDUCATIONAL WEBSITES AND PLATFORMS OFFER SUPPLEMENTAL MATERIALS, PRACTICE QUIZZES, AND INTERACTIVE EXERCISES THAT ALIGN WITH THE CONCEPTS IN THE '1 4 STUDY GUIDE AND INTERVENTION'.

CAN TEACHERS USE THE '1 4 STUDY GUIDE AND INTERVENTION' TO SUPPORT THEIR INSTRUCTION?

ABSOLUTELY! TEACHERS CAN INTEGRATE THE GUIDE INTO THEIR LESSON PLANS AS A RESOURCE FOR ADDITIONAL PRACTICE, HOMEWORK ASSIGNMENTS, OR TARGETED INTERVENTIONS FOR STUDENTS NEEDING EXTRA HELP.

Oct 3, 2024 · 1. [minecraft/gamemode survival](#) 2. [minecraft/gamemode creative](#) minecraft minecraft minecraft minecraft minecraft ...

1/8, 1/4, 1/2, 3/4, 7/8, 1, 5/8, 3/4, 7/8, 1, 9/8, 5/4, 7/4, 5/2, 3, 7/2, 5, 11/2, 7, 15/2, 9, 19/2, 11, 23/2, 13, 27/2, 15, 31/2, 17, 35/2, 19, 39/2, 21, 43/2, 23, 47/2, 25, 51/2, 27, 55/2, 29, 59/2, 31, 63/2, 33, 67/2, 35, 71/2, 37, 75/2, 39, 79/2, 41, 83/2, 43, 87/2, 45, 91/2, 47, 95/2, 49, 99/2, 51, 103/2, 53, 107/2, 55, 111/2, 57, 115/2, 59, 119/2, 61, 123/2, 63, 127/2, 65, 131/2, 67, 135/2, 69, 139/2, 71, 143/2, 73, 147/2, 75, 151/2, 77, 155/2, 79, 159/2, 81, 163/2, 83, 167/2, 85, 171/2, 87, 175/2, 89, 179/2, 91, 183/2, 93, 187/2, 95, 191/2, 97, 195/2, 99, 199/2, 101, 203/2, 103, 207/2, 105, 211/2, 107, 215/2, 109, 219/2, 111, 223/2, 113, 227/2, 115, 231/2, 117, 235/2, 119, 239/2, 121, 243/2, 123, 247/2, 125, 251/2, 127, 255/2, 129, 259/2, 131, 263/2, 133, 267/2, 135, 271/2, 137, 275/2, 139, 279/2, 141, 283/2, 143, 287/2, 145, 291/2, 147, 295/2, 149, 299/2, 151, 303/2, 153, 307/2, 155, 311/2, 157, 315/2, 159, 319/2, 161, 323/2, 163, 327/2, 165, 331/2, 167, 335/2, 169, 339/2, 171, 343/2, 173, 347/2, 175, 351/2, 177, 355/2, 179, 359/2, 181, 363/2, 183, 367/2, 185, 371/2, 187, 375/2, 189, 379/2, 191, 383/2, 193, 387/2, 195, 391/2, 197, 395/2, 199, 399/2, 201, 403/2, 203, 407/2, 205, 411/2, 207, 415/2, 209, 419/2, 211, 423/2, 213, 427/2, 215, 431/2, 217, 435/2, 219, 439/2, 221, 443/2, 223, 447/2, 225, 451/2, 227, 455/2, 229, 459/2, 231, 463/2, 233, 467/2, 235, 471/2, 237, 475/2, 239, 479/2, 241, 483/2, 243, 487/2, 245, 491/2, 247, 495/2, 249, 499/2, 251, 503/2, 253, 507/2, 255, 511/2, 257, 515/2, 259, 519/2, 261, 523/2, 263, 527/2, 265, 531/2, 267, 535/2, 269, 539/2, 271, 543/2, 273, 547/2, 275, 551/2, 277, 555/2, 279, 559/2, 281, 563/2, 283, 567/2, 285, 571/2, 287, 575/2, 289, 579/2, 291, 583/2, 293, 587/2, 295, 591/2, 297, 595/2, 299, 599/2, 301, 603/2, 303, 607/2, 305, 611/2, 307, 615/2, 309, 619/2, 311, 623/2, 313, 627/2, 315, 631/2, 317, 635/2, 319, 639/2, 321, 643/2, 323, 647/2, 325, 651/2, 327, 655/2, 329, 659/2, 331, 663/2, 333, 667/2, 335, 671/2, 337, 675/2, 339, 679/2, 341, 683/2, 343, 687/2, 345, 691/2, 347, 695/2, 349, 699/2, 351, 703/2, 353, 707/2, 355, 711/2, 357, 715/2, 359, 719/2, 361, 723/2, 363, 727/2, 365, 731/2, 367, 735/2, 369, 739/2, 371, 743/2, 373, 747/2, 375, 751/2, 377, 755/2, 379, 759/2, 381, 763/2, 383, 767/2, 385, 771/2, 387, 775/2, 389, 779/2, 391, 783/2, 393, 787/2, 395, 791/2, 397, 795/2, 399, 799/2, 401, 803/2, 403, 807/2, 405, 811/2, 407, 815/2, 409, 819/2, 411, 823/2, 413, 827/2, 415, 831/2, 417, 835/2, 419, 839/2, 421, 843/2, 423, 847/2, 425, 851/2, 427, 855/2, 429, 859/2, 431, 863/2, 433, 867/2, 435, 871/2, 437, 875/2, 439, 879/2, 441, 883/2, 443, 887/2, 445, 891/2, 447, 895/2, 449, 899/2, 451, 903/2, 453, 907/2, 455, 911/2, 457, 915/2, 459, 919/2, 461, 923/2, 463, 927/2, 465, 931/2, 467, 935/2, 469, 939/2, 471, 943/2, 473, 947/2, 475, 951/2, 477, 955/2, 479, 959/2, 481, 963/2, 483, 967/2, 485, 971/2, 487, 975/2, 489, 979/2, 491, 983/2, 493, 987/2, 495, 991/2, 497, 995/2, 499, 1000/2, 501, 1005/2, 503, 1010/2, 505, 1015/2, 507, 1020/2, 509, 1025/2, 511, 1030/2, 513, 1035/2, 515, 1040/2, 517, 1045/2, 519, 1050/2, 521, 1055/2, 523, 1060/2, 525, 1065/2, 527, 1070/2, 529, 1075/2, 531, 1080/2, 533, 1085/2, 535, 1090/2, 537, 1095/2, 539, 1100/2, 541, 1105/2, 543, 1110/2, 545, 1115/2, 547, 1120/2, 549, 1125/2, 551, 1130/2, 553, 1135/2, 555, 1140/2, 557, 1145/2, 559, 1150/2, 561, 1155/2, 563, 1160/2, 565, 1165/2, 567, 1170/2, 569, 1175/2, 571, 1180/2, 573, 1185/2, 575, 1190/2, 577, 1195/2, 579, 1200/2, 581, 1205/2, 583, 1210/2, 585, 1215/2, 587, 1220/2, 589, 1225/2, 591, 1230/2, 593, 1235/2, 595, 1240/2, 597, 1245/2, 599, 1250/2, 601, 1255/2, 603, 1260/2, 605, 1265/2, 607, 1270/2, 609, 1275/2, 611, 1280/2, 613, 1285/2, 615, 1290/2, 617, 1295/2, 619, 1300/2, 621, 1305/2, 623, 1310/2, 625, 1315/2, 627, 1320/2, 629, 1325/2, 631, 1330/2, 633, 1335/2, 635, 1340/2, 637, 1345/2, 639, 1350/2, 641, 1355/2, 643, 1360/2, 645, 1365/2, 647, 1370/2, 649, 1375/2, 651, 1380/2, 653, 1385/2, 655, 1390/2, 657, 1395/2, 659, 1400/2, 661, 1405/2, 663, 1410/2, 665, 1415/2, 667, 1420/2, 669, 1425/2, 671, 1430/

[illegible]

一月份 - 一月
 二月份 - 二月
 三月份 - 三月
 四月份 - 四月
 五月份 - 五月
 六月份 - 六月
 七月份 - 七月
 八月份 - 八月
 九月份 - 九月
 十月份 - 十月
 ...

[\[0\] \[1\] \[2\] \[3\] \[4\] \[5\] \[6\] \[7\] \[8\] \[9\]](#)

Oct 3, 2024 · 1. [\[0\] \[1\] \[2\] \[3\] \[4\] \[5\] \[6\] \[7\] \[8\] \[9\]](#)/gamemode survival 2. [\[0\] \[1\] \[2\] \[3\] \[4\] \[5\] \[6\] \[7\] \[8\] \[9\]](#)/gamemode creative 3. [\[0\] \[1\] \[2\] \[3\] \[4\] \[5\] \[6\] \[7\] \[8\] \[9\]](#) [\[0\] \[1\] \[2\] \[3\] \[4\] \[5\] \[6\] \[7\] \[8\] \[9\]](#) [\[0\] \[1\] \[2\] \[3\] \[4\] \[5\] \[6\] \[7\] \[8\] \[9\]](#) ...

1/8, 1/4, 1/2, 3/4, 7/8 □ □ □ □ □ □ □ □ ? - □ □

□ 1 □ □ □ 8 □ □: 1/8 1/4 3/8 1/2 5/8 3/4 7/8 □ □ □ This is an arithmetic sequence since there is a common difference between each term. In this case, adding 18 to the previous term in the ...

2025年7月...
2025年7月... 2.1 7792 1.4

Unlock your understanding with our comprehensive 1 4 study guide and intervention. Master key concepts and excel in your studies. Learn more now!

[Back to Home](#)