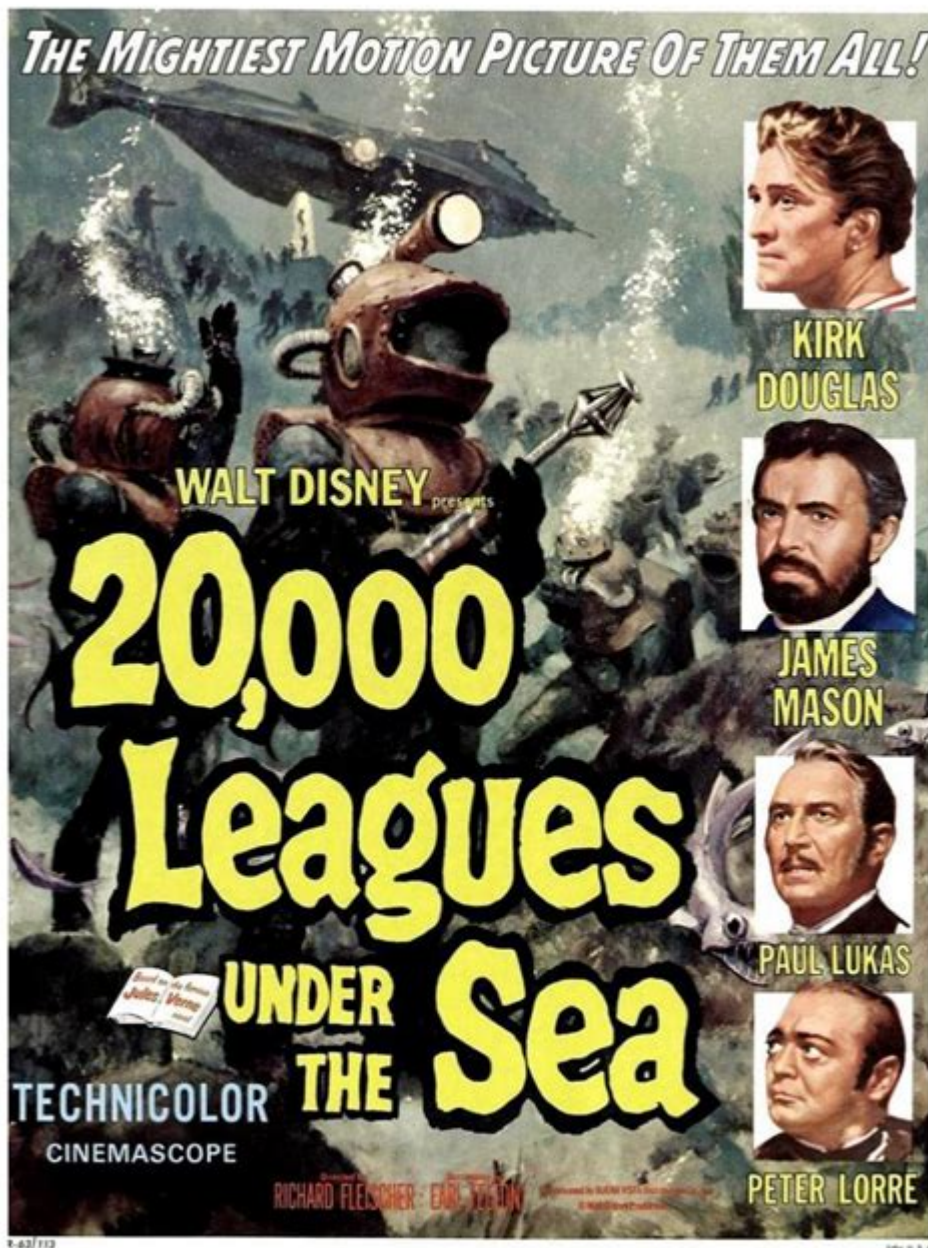


20 000 Leagues Under The Sea



20 000 Leagues Under the Sea is a timeless classic that has captivated readers since its publication in 1870. Written by the illustrious Jules Verne, this science fiction novel delves into the wonders and dangers of the deep sea, exploring themes of adventure, exploration, and the intricate relationship between humanity and nature. The narrative follows Professor Aronnax, his servant Conseil, and Canadian whaler Ned Land as they embark on a thrilling journey aboard the submarine Nautilus, commanded by the enigmatic Captain Nemo. This article will explore the key themes, characters, and impact of this literary masterpiece, as well as its adaptations and relevance in contemporary culture.

Overview of the Plot

In **20 000 Leagues Under the Sea**, the story begins with a series of mysterious sea creature sightings that instigate panic across the globe. The United States government decides to send a ship, the Abraham Lincoln, to investigate these reports. Professor Aronnax, a marine biologist, joins the expedition along with his servant Conseil and the brash whaler Ned Land.

After a series of encounters, the crew discovers that the creature is not a mere giant squid but a sophisticated submarine, the Nautilus. The trio is taken captive by Captain Nemo, a complex character who shuns the surface world and opts for life beneath the waves. Throughout their journey, they explore the ocean's depths, encounter a myriad of marine life, and witness both the beauty and terror of the underwater realm.

Key Themes

The novel is rich with themes that resonate deeply with readers, making it not just an adventure story but a profound commentary on human existence and the natural world.

1. Exploration and Discovery

At its core, **20 000 Leagues Under the Sea** is about the spirit of exploration. The ocean represents the unknown, a vast expanse that beckons humanity to learn more about it. Verne's detailed descriptions of underwater landscapes, marine species, and phenomena reflect a deep curiosity about the natural world.

2. The Duality of Humanity

Captain Nemo embodies the conflict between civilization and nature. He is a brilliant inventor and explorer yet harbors a deep resentment towards society due to personal tragedy. This duality raises questions about the impact of human actions on the environment and how one can be both a creator and destroyer.

3. Isolation and Freedom

Nemo's submarine is both a sanctuary and a prison. While it offers freedom from the constraints of society, it also isolates its inhabitants from human contact. This theme of isolation is further explored through the characters' interactions and their longing for connection.

Main Characters

The novel features a compelling cast of characters who each represent different facets of humanity and its relationship with nature.

1. Professor Pierre Aronnax

As the narrator, Professor Aronnax provides a scientific perspective on the adventure. His curiosity and intellect drive much of the exploration and allow readers to engage with the novel's themes of discovery and knowledge.

2. Captain Nemo

A complex figure, Captain Nemo is both a hero and a villain. His genius and passion for the ocean contrast sharply with his disdain for society. He symbolizes the struggle between the desire for freedom and the burdens of the past.

3. Conseil

Conseil, Aronnax's loyal servant, represents unwavering loyalty and dedication. His character adds depth to the story, showcasing the human capacity for friendship and support in the face of adversity.

4. Ned Land

The brash Canadian whaler, Ned Land, serves as a foil to Aronnax and Nemo. His adventurous spirit and practical skills highlight the human desire for exploration and adventure, while also providing a grounded perspective on the nautical journey.

Literary Significance

20 000 Leagues Under the Sea is not only a pioneer of the science fiction genre but also a significant work in literary history. It has inspired countless authors, filmmakers, and scientists.

1. Science Fiction Pioneer

Verne's work is often credited with laying the groundwork for modern science fiction. His

ability to blend scientific accuracy with imaginative storytelling set the stage for future writers in the genre.

2. Technological Innovations

The novel features many technological innovations that were ahead of its time, including the concept of submarines and underwater exploration. Verne's predictions have inspired real-world inventions and explorations, demonstrating the impact of literature on scientific advancement.

3. Cultural Impact

The story of the Nautilus and Captain Nemo has permeated popular culture, inspiring adaptations in film, theater, and even theme parks. Its themes continue to resonate, reflecting ongoing concerns about environmentalism, technology, and the human condition.

Adaptations of 20 000 Leagues Under the Sea

The novel has been adapted numerous times across various media, each interpretation offering a unique perspective on Verne's classic tale.

1. Film

- 1954 Disney Adaptation: This version is one of the most famous adaptations, featuring groundbreaking special effects and a memorable performance by James Mason as Captain Nemo.
- 1997 TV Miniseries: A more recent adaptation that aimed to remain faithful to Verne's original text, presenting a more nuanced portrayal of the characters and themes.

2. Animation

- 20,000 Leagues Under the Sea (1970): This animated film captures the spirit of adventure and introduces the story to younger audiences while maintaining the essence of the original narrative.

3. Stage Productions

- Various theatrical adaptations have also emerged, showcasing the timelessness of Verne's themes and characters. These productions often highlight the dramatic elements of the

story, focusing on the internal conflicts faced by Nemo and Aronnax.

Conclusion

20 000 Leagues Under the Sea remains a monumental work that transcends time, offering readers a glimpse into the depths of human curiosity and the mysteries of the ocean. Jules Verne's ability to weave adventure with profound themes continues to inspire generations, making this novel a cornerstone of both literature and science fiction. As we delve deeper into our oceans and explore the unknown, Verne's insights serve as a reminder of the delicate balance between humanity and nature, urging us to respect and protect the world beneath the waves.

Frequently Asked Questions

What is the primary theme of '20,000 Leagues Under the Sea'?

The primary theme of '20,000 Leagues Under the Sea' is the conflict between humanity and nature, exploring the wonders and dangers of the ocean while highlighting the pursuit of knowledge and the consequences of scientific exploration.

Who is the captain of the Nautilus and what is his significance in the story?

Captain Nemo is the enigmatic leader of the Nautilus. His character represents a complex blend of genius and bitterness, driven by his desire for freedom from oppressive societies and showcasing the duality of man's relationship with technology and nature.

How does Jules Verne use technology in '20,000 Leagues Under the Sea'?

Jules Verne incorporates advanced technology in the novel, particularly through the submarine Nautilus. This representation of futuristic innovations reflects the optimism of the Industrial Revolution while also serving as a cautionary tale about the potential dangers of unchecked technological advancement.

What role does the ocean play in the narrative of '20,000 Leagues Under the Sea'?

The ocean serves as both a setting and a character in '20,000 Leagues Under the Sea'. It symbolizes the unknown and the adventure of exploration, while also representing the beauty and peril of nature, challenging the characters' perceptions and philosophies throughout their journey.

How has '20,000 Leagues Under the Sea' influenced modern science fiction?

'20,000 Leagues Under the Sea' has significantly influenced modern science fiction by introducing themes of exploration, advanced technology, and complex characters. Its imaginative portrayal of underwater travel and the mysteries of the sea has inspired countless adaptations and works within the genre, cementing its place as a foundational text.

Find other PDF article:

<https://soc.up.edu.ph/65-proof/files?dataid=bTf93-8802&title=waste-management-interview-questions.pdf>

20 000 Leagues Under The Sea

URL encoding the space character: + or %20? - Stack Overflow

Oct 27, 2009 · As the aforementioned RFC does not include any reference of encoding spaces as +, I guess using %20 is the way to go today. For example, "%20" is the percent-encoding for ...

A html space is showing as %2520 instead of %20 - Stack Overflow

Apr 18, 2013 · A bit of explaining as to what that %2520 is : The common space character is encoded as %20 as you noted yourself. The % character is encoded as %25. The way you get ...

□ □ □ □ □ □ □ □ □ □ □ □ □ □ □ □ □ □ _ □ □ □ □

Oct 3, 2024 · [\[REDACTED\]](#) [\[REDACTED\]](#) 1. [\[REDACTED\]/gamemode survival](#) 2. [\[REDACTED\]](#)
[/gamemode creative](#) [\[REDACTED\]](#) ...

Dec 16, 2023 · 1 ...

□-20□□□□□□□□□□□□□□□□ - □□

2019年11月18日“ ” ...

□□□□□□□□□□□□□□? - □□

1984年“ ” 1993年 17.3—11.3Kpa (130—85mmHg)
 17.3—18.6Kpa (130—139mmHg) ...

2025 7 RTX 5060

Jun 30, 2025 · 1080P/2K/4K RTX 5060 25

[illegible]

Oct 2, 2024 · [REDACTED] [REDACTED]
[REDACTED] ...

[Back to Home](#)