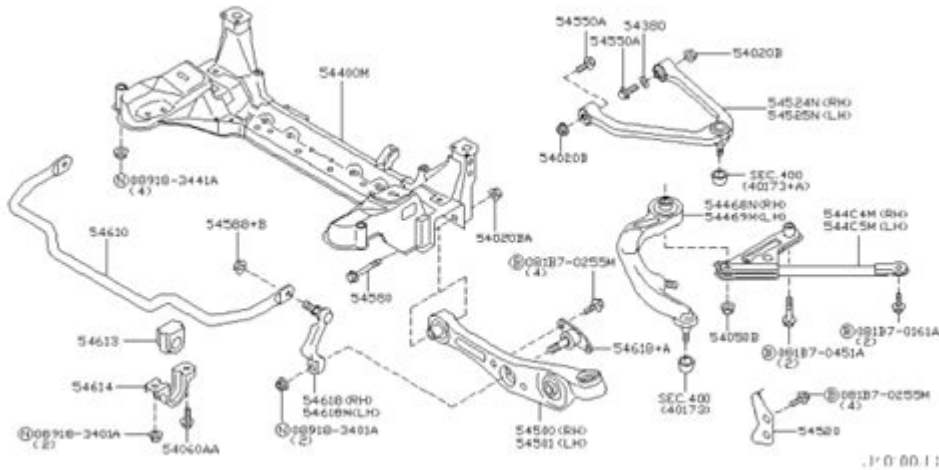


2004 Infiniti G35 Sedan Front Suspension Diagram



2004 Infiniti G35 sedan front suspension diagram is an essential resource for anyone looking to understand the intricacies of their vehicle's suspension system. The 2004 Infiniti G35 sedan, known for its sporty performance and luxurious features, boasts a sophisticated suspension design that contributes to its exceptional handling and ride comfort. Understanding the front suspension diagram can help both car enthusiasts and DIY mechanics diagnose issues, perform maintenance, or upgrade components effectively. In this article, we will explore the key components of the front suspension system, discuss its importance, and provide a detailed look at the front suspension diagram specific to the 2004 Infiniti G35 sedan.

Overview of the Front Suspension System

The front suspension system of the 2004 Infiniti G35 sedan plays a crucial role in ensuring a smooth and stable ride. It is responsible for supporting the vehicle's weight, absorbing shocks from the road, and maintaining tire contact with the pavement. The main components of the front suspension system include:

- Struts
- Control arms
- Ball joints
- Sway bar (stabilizer bar)
- Springs
- Tie rods

- Wheel hub assembly

Understanding how these components work together is vital for diagnosing issues and performing repairs.

Key Components of the Front Suspension System

1. Struts

Struts are a critical part of the suspension system, combining shock absorption and structural support. They help maintain the alignment of the wheels while providing cushioning for the vehicle. The 2004 Infiniti G35 sedan uses MacPherson struts in the front suspension, which allows for a compact design and efficient space usage.

2. Control Arms

Control arms connect the vehicle's chassis to the wheels, allowing for controlled movement during suspension travel. The G35 sedan features upper and lower control arms, which not only support the weight of the vehicle but also help maintain proper wheel alignment.

3. Ball Joints

Ball joints serve as pivot points for the control arms and the wheel hub assembly. They allow for smooth movement and flexibility while also maintaining stability. Regular inspection is essential, as worn ball joints can lead to alignment issues and uneven tire wear.

4. Sway Bar

The sway bar, or stabilizer bar, helps reduce body roll during cornering. It connects the left and right sides of the suspension system, ensuring that when one wheel rises or falls, the other side is affected, promoting balance and stability.

5. Springs

Coil springs in the front suspension help absorb shocks and maintain ride height. They compress and expand as the vehicle encounters bumps and dips, providing a smoother ride for occupants.

6. Tie Rods

Tie rods connect the steering mechanism to the wheel assembly, allowing for precise steering control. They play a significant role in ensuring proper alignment and handling of the vehicle.

7. Wheel Hub Assembly

The wheel hub assembly houses the wheel bearings and provides a mounting point for the wheels. It is essential for ensuring smooth wheel rotation and supporting the weight of the vehicle.

Importance of the Front Suspension Diagram

The front suspension diagram for the 2004 Infiniti G35 sedan is a valuable tool for various reasons:

- **Visual Reference:** The diagram provides a clear visual representation of how all components are connected, making it easier to understand the overall system.
- **Diagnostic Aid:** When issues arise, the diagram can help identify which components may be causing problems, facilitating efficient troubleshooting.
- **Repair Guidance:** For DIY mechanics, the diagram offers guidance during repairs and replacements, ensuring that parts are correctly installed.
- **Upgrade Planning:** Car enthusiasts looking to upgrade their suspension can use the diagram to understand compatibility and installation requirements.

Common Suspension Issues in the 2004 Infiniti G35 Sedan

Like any vehicle, the 2004 Infiniti G35 sedan may experience suspension-related issues over time. Some common problems include:

- **Worn Struts:** A common issue that can lead to a bouncy ride and poor handling.
- **Loose Ball Joints:** Worn ball joints can cause clunking noises and affect steering responsiveness.
- **Broken Springs:** A broken coil spring may cause uneven ride height and poor shock absorption.

- **Worn Tie Rods:** This can lead to alignment issues and a wandering steering feel.
- **Corroded Sway Bar Links:** Corrosion can weaken sway bar links, leading to increased body roll during turns.

Regular maintenance and inspections can help mitigate these issues and extend the lifespan of the suspension system.

How to Read the Front Suspension Diagram

Understanding how to read the front suspension diagram is crucial for effective maintenance and repairs. Here are some tips:

1. **Identify Components:** Familiarize yourself with the names and functions of each component in the diagram.
2. **Check Connections:** Pay attention to how each part connects to others; this can help identify potential problem areas.
3. **Look for Signs of Wear:** Use the diagram to locate components that may show signs of wear or damage.
4. **Follow Manufacturer Guidelines:** Always refer to the specific guidelines from Infiniti to ensure proper installation and maintenance.

Conclusion

In summary, the **2004 Infiniti G35 sedan front suspension diagram** serves as an invaluable resource for understanding and maintaining the vehicle's suspension system. By familiarizing yourself with the key components, their functions, and how they interact, you can diagnose issues more effectively and perform repairs with confidence. Whether you're a car enthusiast looking to enhance your vehicle's performance or a DIY mechanic handling routine maintenance, having a clear understanding of the front suspension diagram will undoubtedly benefit your efforts. Regular inspection and timely repairs will help ensure that your G35 sedan continues to provide a smooth and enjoyable driving experience for years to come.

Frequently Asked Questions

What components are included in the front suspension diagram of a 2004 Infiniti G35 sedan?

The front suspension diagram typically includes components such as the upper control arm, lower control arm, coil spring, shock absorber, sway bar, and steering knuckle.

How can I obtain a detailed front suspension diagram for my 2004 Infiniti G35 sedan?

You can obtain a detailed front suspension diagram by referring to the vehicle's service manual, visiting online automotive forums, or checking websites that specialize in repair manuals like Chilton or Haynes.

What common issues can arise with the front suspension of a 2004 Infiniti G35 sedan?

Common issues include worn-out bushings, damaged shock absorbers, misaligned components, and broken sway bar links, which can lead to poor handling and increased tire wear.

How do I interpret the front suspension diagram for maintenance on a 2004 Infiniti G35 sedan?

To interpret the front suspension diagram, identify each component labeled on the diagram, understand their functions, and follow the maintenance procedures for inspection and replacement as needed.

Is it necessary to replace the entire front suspension if one component fails in a 2004 Infiniti G35 sedan?

It is not always necessary to replace the entire front suspension; typically, only the failed component needs to be replaced, but it's important to inspect adjacent parts for wear and ensure proper alignment afterward.

Find other PDF article:

<https://soc.up.edu.ph/49-flash/Book?trackid=xkl47-1475&title=purpose-driven-life-worksheets.pdf>

[2004 Infiniti G35 Sedan Front Suspension Diagram](#)

Infiniti G35 Sedan Front Suspension Diagram - PDF

Infiniti G35 Sedan Front Suspension Diagram PDF 2020 Infiniti G35 Sedan Front Suspension Diagram 1946-2021 Infiniti G35 Sedan Front Suspension Diagram ...

08 Infiniti G35 Sedan Front Suspension Diagram? - PDF

Infiniti G35 Sedan Front Suspension Diagram PDF PC+ Infiniti G35 Sedan Front Suspension Diagram Win98 Infiniti G35 Sedan Front Suspension Diagram ...

Infiniti G35 Sedan Front Suspension Diagram - PDF

Infiniti G35 Sedan Front Suspension Diagram Infiniti G35 Sedan Front Suspension Diagram Infiniti G35 Sedan Front Suspension Diagram Infiniti G35 Sedan Front Suspension Diagram ...

Infiniti G35 Sedan Front Suspension Diagram pdf Infiniti G35 Sedan Front Suspension Diagram - PDF

□ □ □ □ ...

win10????2004? - ??

Mar 30, 2020 · win10“win+i” “” “Windows”
 ...

Microsoft Excel 97-2004 worksheet - Microsoft Community

Feb 3, 2018 · i'm trying to open Microsoft Excel 97-2004 worksheet on my Apple ipad Air2 what do i have to do Please.

Explore the detailed 2004 Infiniti G35 sedan front suspension diagram. Gain insights into its components and functionality. Learn more for expert tips and guidance!

[Back to Home](#)