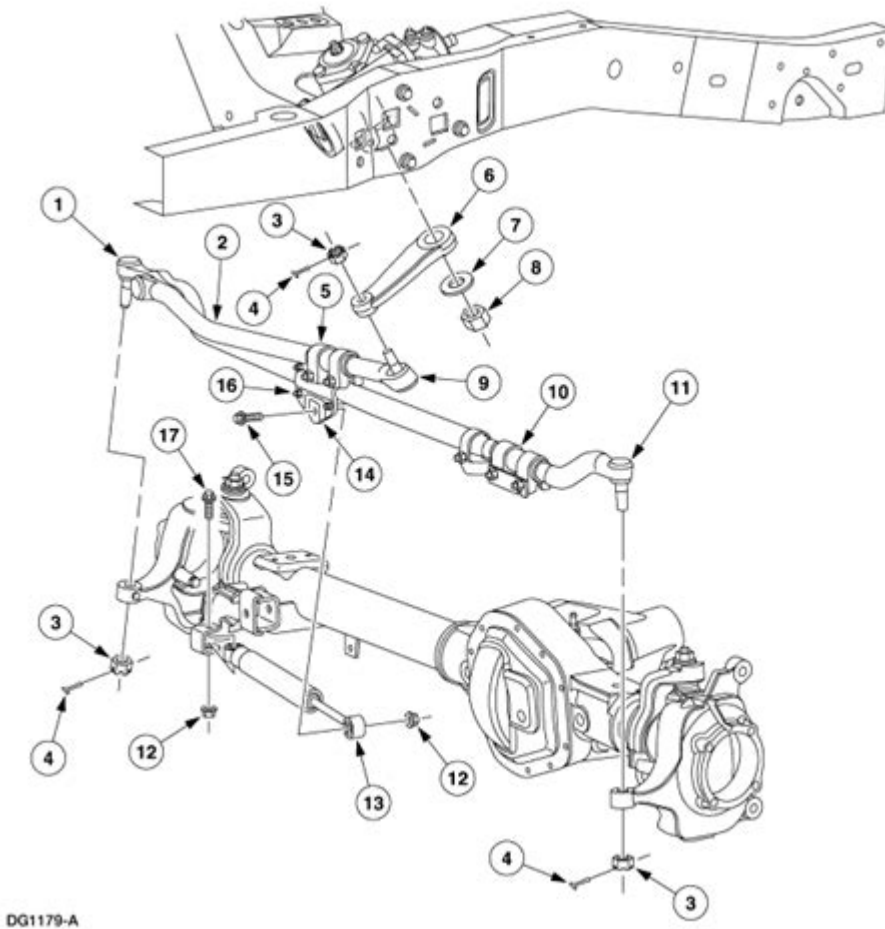


# 2012 Ford F250 Front End Parts Diagram



2012 Ford F250 front end parts diagram provides an essential reference for understanding the components that make up the front end of this popular heavy-duty truck. The Ford F250, part of the Super Duty lineup, is renowned for its robust design and outstanding performance capabilities, making it a favorite among truck enthusiasts and professionals alike. A clear understanding of the front end parts is crucial for maintenance, repairs, or upgrades, ensuring that the vehicle remains in optimal condition. In this article, we will delve into the various components, their functions, and how they fit into the overall structure of the 2012 Ford F250.

## Overview of the Front End Components

The front end of the 2012 Ford F250 is comprised of several key components that work together to ensure the vehicle operates smoothly and efficiently. Understanding these parts helps in diagnosing issues, performing repairs, or even customizing the truck for specific needs. The major components include:

1. **Bumper:** The first line of defense in a collision, the bumper is designed to absorb impact and protect the vehicle's frame.

2. Grille: This part allows airflow to the engine while providing an aesthetic appeal to the truck's front end.
3. Headlights: Essential for visibility, these lights also contribute to the overall appearance of the truck.
4. Fenders: These are located on the sides of the front end and protect the wheels while enhancing the truck's aerodynamics.
5. Hood: The hood covers the engine compartment and is crucial for engine access during maintenance.
6. Radiator Support: This component holds the radiator in place and supports the front end structure.
7. Suspension Components: This includes parts like control arms, struts, and sway bars that affect ride quality and handling.

## Detailed Breakdown of Front End Parts

### Bumper

The bumper on the 2012 Ford F250 is built to withstand substantial forces and protect the truck's frame from damage. It is typically made from high-strength steel or a composite material.

- Components of the Bumper:
- Bumper Cover: The outer part that provides aesthetic appeal.
- Bumper Reinforcement: The inner structure that absorbs impacts.
- Brackets: These secure the bumper to the frame.

### Grille

The grille serves both functional and aesthetic purposes. It allows air to flow into the engine compartment, aiding in cooling, while also contributing to the truck's rugged look.

- Components of the Grille:
- Grille Frame: The outer structure that holds the grille in place.
- Grille Inserts: These can be designed for improved airflow or style.
- Emblem: The Ford logo, typically located in the center of the grille.

### Headlights

The headlights on the F250 are crucial for visibility during nighttime driving and inclement weather. They come with various features, including halogen or LED lighting options.

- Types of Headlights:
- Standard Halogen: Provides adequate lighting but may require more frequent replacement.
- HID (High-Intensity Discharge): Offers brighter light but can be more expensive.
- LED: Energy-efficient and long-lasting, they are increasingly popular among truck owners.

## **Fenders**

Fenders protect the wheels and the vehicle's body from mud, debris, and water. They also contribute to the truck's overall design.

- Fender Types:
- Front Fenders: Located on either side of the front end.
- Fender Liners: Inner liners that provide additional protection and insulation.

## **Hood**

The hood is more than just a cover; it provides access to the engine for maintenance and repairs. The design of the hood can also affect the aerodynamics of the truck.

- Hood Features:
- Hood Insulation: Reduces noise and protects the paint from engine heat.
- Struts or Hinges: Allow for easy opening and closing of the hood.

## **Radiator Support**

The radiator support is a crucial component that holds the radiator and other front-end parts in place. It is designed to withstand the weight of these components while allowing for proper airflow.

- Key Functions:
- Structural Support: Maintains the integrity of the front end.
- Airflow Management: Helps direct air through the radiator for cooling.

## **Suspension Components**

The front suspension system of the F250 is essential for maintaining ride quality and handling. It includes various parts that work together to absorb shocks and provide stability.

- Major Suspension Parts:
- Control Arms: These connect the wheel hub to the chassis and allow for up-and-down movement.
- Struts: Provide support for the vehicle's weight and absorb bumps.
- Sway Bars: Help prevent body roll during cornering.

## Understanding the Parts Diagram

The 2012 Ford F250 front end parts diagram is a visual representation that illustrates the location and relationship of each component. Typically, the diagram includes labels for each part, making it easier to identify and reference them during repairs or upgrades.

- How to Use the Diagram:
  1. Locate the specific part you are interested in.
  2. Refer to the corresponding section in the manual for detailed instructions on installation or replacement.
  3. Use the diagram to understand how different components interact with each other.

## Common Issues and Maintenance Tips

Understanding the front end components also involves recognizing potential issues that may arise and how to maintain them effectively.

### Common Front End Issues

1. Worn Suspension Parts: Signs include a rough ride or uneven tire wear.
2. Damaged Bumper or Grille: Look for cracks or dents that may compromise structural integrity.
3. Headlight Failure: Check for burnt-out bulbs or electrical issues if headlights flicker or fail to operate.

### Maintenance Tips

- Regular Inspections: Frequently check for loose parts or signs of wear and tear.
- Proper Alignment: Ensure the wheels are aligned to avoid uneven tire wear and improve handling.
- Cleaning Components: Keep the grille and headlights clean to maintain visibility and airflow.

## Conclusion

A comprehensive understanding of the 2012 Ford F250 front end parts diagram is invaluable for anyone looking to maintain or modify their truck. By familiarizing yourself with the various components, their functions, and how they interconnect, you can ensure that your vehicle remains in top condition. Whether you are a DIY enthusiast or a professional mechanic, this knowledge will serve you well in keeping your F250 running smoothly and efficiently.

## Frequently Asked Questions

### **What are the main components of the front end of a 2012 Ford F250?**

The main components include the front bumper, grille, headlights, fenders, radiator support, and suspension parts such as control arms and ball joints.

### **Where can I find a detailed parts diagram for a 2012 Ford F250 front end?**

You can find a detailed parts diagram in the vehicle's service manual, online auto parts retailers, or websites like Ford's official site and forums dedicated to Ford trucks.

### **Are there common issues with the front end parts of the 2012 Ford F250?**

Common issues include worn ball joints, damaged control arms, and problems with the steering components, which may lead to steering instability.

### **How do I identify the front end parts in a diagram for a 2012 Ford F250?**

Parts are usually labeled with numbers or letters that correspond to a legend or key within the diagram, indicating each part's name and function.

### **Can I replace front end parts on a 2012 Ford F250 myself?**

Yes, many front end parts can be replaced by a DIY enthusiast with basic tools and mechanical knowledge, but it's important to follow safety precautions and consult a repair manual.

### **What tools do I need to work on the front end parts of a 2012 Ford F250?**

You'll typically need a socket set, wrenches, a torque wrench, a jack and jack stands, and possibly specialized tools like a ball joint separator.

## How often should I inspect the front end parts of my 2012 Ford F250?

It's recommended to inspect front end parts during regular maintenance checks, typically every 5,000 to 10,000 miles, or if you notice any handling issues.

## What is the cost range for replacing front end parts on a 2012 Ford F250?

The cost can vary significantly based on the specific part and labor costs, but you might expect to pay anywhere from \$100 to \$1,500 depending on the part and repair shop.

## Are there aftermarket parts available for the front end of a 2012 Ford F250?

Yes, there are many aftermarket parts available for the front end of a 2012 Ford F250, which can sometimes provide cost savings or performance enhancements.

Find other PDF article:

<https://soc.up.edu.ph/52-snap/pdf?trackid=JNi06-0751&title=science-materials-and-their-properties.pdf>

## [2012 Ford F250 Front End Parts Diagram](#)

2012 -

2012 2009

2012 ...

2012

IP -

ip windows "cmd windows Power shell ipconfig

-

...

CAD -

Oct 10, 2023 · cad2004 2007 2012 cad2000 3d, cad2012-2014 (win7 3d) inventor, cad2016 (win10)

ipad, iPad

Oct 20, 2024 · iPad 4 2012 A6X Lightning iPad2017 A9 9.7 Air ...

PDF2020-1946-2021 ...

endnote {#} - word1 1 2 2 endnote ...

2012-2022 2012 13 ...

Excel 2. Excel “” -> “” ...

2012 2012 ### 2009 2012 ...

2012 2012 ...

IP ip windows “” cmd windows Power shell ipconfig IP ...

ip inventor, cad2016 (win10) ...

CAD Oct 10, 2023 · cad2004 2007 2012 cad2000 3d, cad2012-2014 (win7 3d) inventor, cad2016 (win10) ...

ipad,iPad iPad Oct 20, 2024 · iPad 4 2012 A6X Lightning iPad2017 A9 9.7 Air ...

PDF2020-1946-2021 ...

endnote {#} - word1 1 2 2 endnote ...

2012-2022

2012 13

Excel

2. Excel " " -> " " ...

Explore our detailed 2012 Ford F250 front end parts diagram to enhance your truck's performance. Discover how each component works! Learn more now.

[Back to Home](#)