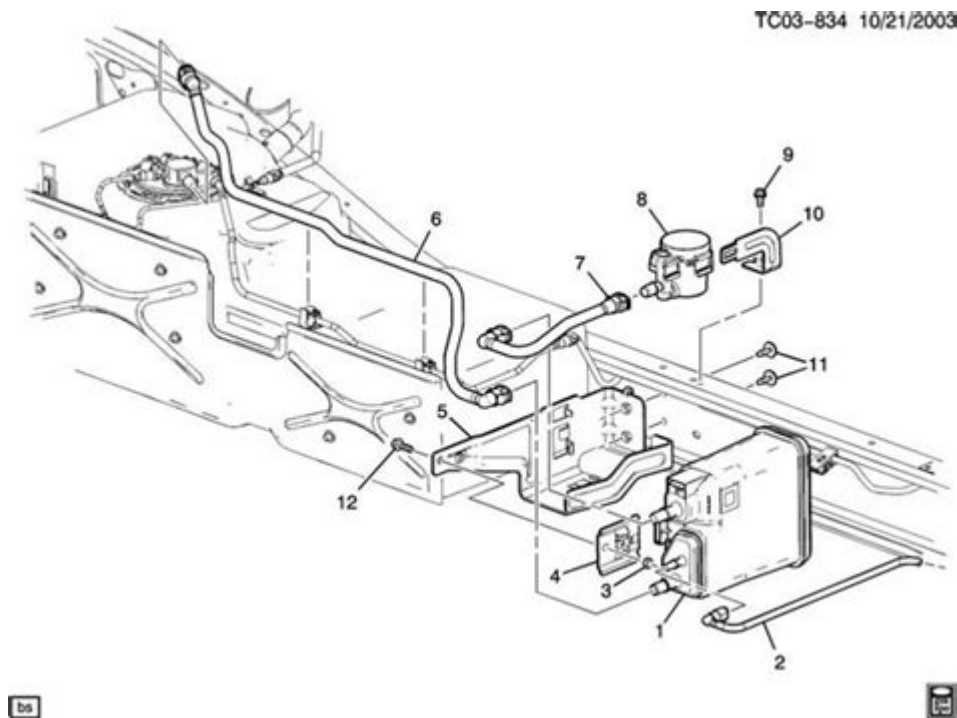


# 2005 Chevy Tahoe Evap System Diagram



2005 Chevy Tahoe Evap System Diagram: Understanding the evaporative emissions control system in your 2005 Chevy Tahoe is crucial for ensuring your vehicle runs efficiently and remains compliant with environmental regulations. This article will delve into the specifics of the evap system, including its components, function, and maintenance tips, as well as providing a detailed diagram for better visualization.

## What is the Evaporative Emissions Control System?

The Evaporative Emissions Control (EVAP) system is designed to prevent fuel vapors from escaping into the atmosphere. In the 2005 Chevy Tahoe, this system captures and stores fuel vapors from the fuel tank and delivers them to the engine to be burned, thus reducing harmful emissions.

## Key Components of the EVAP System

Understanding the components of the EVAP system is essential for troubleshooting and maintenance. Below are the key parts involved in the 2005 Chevy Tahoe EVAP system:

1. Fuel Tank: The starting point of the EVAP system where fuel vapors are generated.
2. Vapor Lines: These lines transport vapors from the fuel tank to various other components in the system.
3. Charcoal Canister: A crucial component that captures and stores fuel vapors until they

can be purged into the engine.

4. Purge Valve: Controls the flow of vapors from the charcoal canister to the engine.
5. Vent Valve: Allows outside air into the system, preventing vacuum buildup.
6. Fuel Cap: Seals the fuel tank to minimize vapor escape.
7. Pressure Sensor: Monitors the system's pressure to ensure it is functioning properly.

## Functionality of the EVAP System

The EVAP system operates through a series of steps designed to minimize fuel vapor emissions. Here's how it works:

1. Vapor Generation: When fuel is placed in the tank, some fuel evaporates into vapors. These vapors accumulate in the fuel tank.
2. Vapor Capture: The vapors are routed through vapor lines to the charcoal canister. The carbon within the canister absorbs these vapors.
3. Purge Process: When the engine is running, the Engine Control Module (ECM) opens the purge valve, allowing the captured vapors to flow from the charcoal canister to the intake manifold.
4. Combustion: The engine burns the vapors as part of the combustion process, minimizing emissions released into the atmosphere.
5. Ventilation: The vent valve opens to allow fresh air into the system, ensuring proper pressure levels.

## Diagram of the EVAP System

A visual representation can significantly enhance your understanding of the EVAP system. Here's a simplified breakdown of the 2005 Chevy Tahoe EVAP system diagram:

- Fuel Tank (1)
- Connects to:
- Vapor Lines (2)
- Leading to:
- Charcoal Canister (3)
- Connected to:
- Purge Valve (4)
- Which opens to:
- Intake Manifold (5)
- Also connected to:
- Vent Valve (6)
- Pressure Sensor (7) monitors the entire system.

This diagram is simplified for clarity; for more detailed schematics, consult the factory service manual or a professional mechanic.

# Common Issues with the EVAP System

The EVAP system can encounter several common issues that affect its performance. Recognizing these problems can help you address them proactively:

1. **Faulty Fuel Cap:** A loose or damaged fuel cap can lead to increased emissions and trigger the Check Engine light.
2. **Clogged Charcoal Canister:** Over time, the charcoal canister can become saturated or clogged, preventing it from capturing vapors effectively.
3. **Leaking Vapor Lines:** Cracks or damage in vapor lines can result in vapor loss and reduced system efficiency.
4. **Malfunctioning Purge Valve:** If the purge valve fails to open or close correctly, it can hinder the purging process, leading to poor engine performance.
5. **Faulty Pressure Sensor:** A malfunctioning sensor can lead to incorrect readings and cause the Check Engine light to illuminate.

## Signs of EVAP System Problems

Keep an eye out for these signs that may indicate a problem with your EVAP system:

- **Check Engine Light:** This may illuminate due to issues within the EVAP system.
- **Fuel Smell:** A strong smell of gasoline can signal a leak in the system.
- **Poor Fuel Economy:** If your Tahoe suddenly starts consuming more fuel than usual, it could be related to the EVAP system.
- **Failed Emissions Test:** A malfunctioning EVAP system can cause your vehicle to fail emissions testing.

## Maintenance Tips for the EVAP System

Regular maintenance of the EVAP system can help prevent issues and ensure optimal performance. Here are some tips:

1. **Inspect the Fuel Cap:** Regularly check that the fuel cap is tight and in good condition. Replace it if damaged.
2. **Check for Leaks:** Periodically inspect the vapor lines for cracks or damage.
3. **Test the Purge Valve:** Ensure the purge valve operates correctly by checking for any leaks around it.
4. **Replace the Charcoal Canister:** If you suspect that the canister is clogged or saturated, consider replacing it as a preventive measure.
5. **Run Diagnostic Tests:** If the Check Engine light is on, use an OBD-II scanner to diagnose the issue promptly.

# Conclusion

Understanding the 2005 Chevy Tahoe EVAP system diagram and its components is vital for maintaining your vehicle's efficiency and compliance with environmental standards. By familiarizing yourself with the system's functionality, common issues, and maintenance practices, you can ensure that your Chevy Tahoe runs smoothly and efficiently. Regular inspections and prompt attention to any issues can save you from more significant repairs down the line, making your driving experience safer and more enjoyable. Always consult your vehicle's service manual or a professional mechanic for specific advice tailored to your situation.

## Frequently Asked Questions

### **What is the purpose of the EVAP system in a 2005 Chevy Tahoe?**

The EVAP system in a 2005 Chevy Tahoe is designed to prevent fuel vapors from escaping into the atmosphere, capturing them and directing them back to the engine for combustion.

### **Where can I find the EVAP system diagram for a 2005 Chevy Tahoe?**

The EVAP system diagram for a 2005 Chevy Tahoe can typically be found in the vehicle's service manual, online automotive forums, or websites dedicated to repair manuals.

### **What components are included in the EVAP system of a 2005 Chevy Tahoe?**

The EVAP system of a 2005 Chevy Tahoe includes components such as the charcoal canister, vent valve, purge valve, fuel tank, and various hoses and connections.

### **How can I diagnose issues with the EVAP system in my 2005 Chevy Tahoe?**

To diagnose EVAP system issues, you can perform a visual inspection for leaks, use an OBD-II scanner to check for error codes, and test the functionality of the purge and vent valves.

### **What are common symptoms of a faulty EVAP system in a 2005 Chevy Tahoe?**

Common symptoms of a faulty EVAP system include the check engine light being illuminated, poor fuel economy, a strong smell of fuel, and failed emissions tests.

## **Can I repair the EVAP system myself on a 2005 Chevy Tahoe?**

Yes, many EVAP system repairs can be done at home if you have the right tools and knowledge, such as replacing hoses or valves, but you should consult a repair manual for guidance.

## **What should I do if my 2005 Chevy Tahoe has an EVAP-related check engine light?**

If your check engine light is related to the EVAP system, you should first retrieve the trouble codes using an OBD-II scanner, then inspect the system for leaks or damaged components before making repairs.

## **How do I reset the check engine light after fixing the EVAP system in a 2005 Chevy Tahoe?**

To reset the check engine light after fixing the EVAP system, you can disconnect the battery for a few minutes, use an OBD-II scanner to clear the codes, or drive the vehicle to allow the system to reset automatically.

## **Is the EVAP system of a 2005 Chevy Tahoe covered under warranty?**

The EVAP system may be covered under warranty if the vehicle is still under the manufacturer's warranty, but for older vehicles, it likely depends on the specific warranty coverage at the time of purchase.

## **What is the location of the charcoal canister in the EVAP system of a 2005 Chevy Tahoe?**

The charcoal canister in the EVAP system of a 2005 Chevy Tahoe is usually located near the fuel tank, often mounted on the frame or under the vehicle, depending on the specific model.

Find other PDF article:

<https://soc.up.edu.ph/32-blog/pdf?docid=sJS17-5043&title=i-want-to-become-a-chef.pdf>

## **2005 Chevy Tahoe Evap System Diagram**

PDF - PDF

PDF 2020 PDF 1946-2021 ...

問題の答えは? - 問題

問題の答えは? - 問題 08 問題の答えは? - 問題 ...

問題の答えは? - 問題 pdf - 問題

問題の答えは? - 問題 pdf - 問題

問題の答えは? - 問題 2005 - 問題

問題の答えは? - 問題 2005 問題の答えは? - 問題 2005 問題の答えは? - 問題 6 問題の答えは? - 問題

問題の答えは? - 問題

問題の答えは? - 問題 問題の答えは? - 問題 問題の答えは? - 問題 問題の答えは? - 問題 問題の答えは? - 問題 ...

問題の答えは? - 問題

問題の答えは? - 問題 2005 問題の答えは? - 問題 13 問題の答えは? - 問題 2006 問題の答えは? - 問題 13 問題の答えは? - 問題 2007 問題の答えは? - 問題 13 問題の答えは? - 問題 2008 問題の答えは? - 問題 ...

問題の答えは? - 問題

問題の答えは? - 問題 問題の答えは? - 問題 XXX 問題の答えは? - 问题 XXX 問題の答えは? - 问题 ...

endnote 問題の答えは? - 问题 {#} 問題の答えは? - 问题

endnote 問題の答えは? - 问题 endnote 問題の答えは? - 问题 word 1 問題の答えは? - 问题 1 問題の答えは? - 问题 2 問題の答えは? - 问题 2 問題の答えは? - 问题 endnote ...

問題の答えは? - 问题

問題の答えは? - 问题 U tility Patents 問題の答えは? - 问题 (問題の答えは? - 问题 Patent Applications 問題の答えは? - 问题 Design Patents 問題の答えは? - 问题 Plant Patent 問題の答えは? - 问题 Reexamination Certificate 問題の答えは? - 问题 (B) ...

問題の答えは? - 问题 ...

問題の答えは? - 问题 2005 12 8 問題の答えは? - 问题 ...

問題の答えは? - 问题

問題の答えは? - 问题 問題の答えは? - 问题 PDF 問題の答えは? - 问题 2020 問題の答えは? - 问题 1946-2021 問題の答えは? - 问题 ...

問題の答えは? - 问题

問題の答えは? - 问题 08 問題の答えは? - 问题 1 問題の答えは? - 问题

問題の答えは? - 问题 pdf - 问题

問題の答えは? - 问题 pdf - 问题

問題の答えは? - 问题 2005 - 问题

問題の答えは? - 问题 2005 問題の答えは? - 问题 2005 問題の答えは? - 问题 6 問題の答えは? - 问题

問題の答えは? - 问题

問題の答えは? - 问题 問題の答えは? - 问题 問題の答えは? - 问题 問題の答えは? - 问题 問題の答えは? - 问题 ...

XXXXXXXXXXXXXXXXXXXX - XX

XXXX 2005XXXXXXXX13XXXXXXXXXXXXXXXX 2006XXXXXXXX13XXXXXXXXXXXXXXXX 2007XXXXXXXX13XXXXXXXXXXXXXXXX  
XX 2008XXXXXXXX13XXXXXXXXXXXXXXXX 2009XXXXXXXXXXXXXXXX

XXXXXXXXXXXXXXXXXXXX - XX

XX XXX XX XXXXXXXXXXXXXXXXXXXXXXXXXXXXXXXXXXXXXXX XX XXXX  
XXXXGB2015XXBXXB.1XXXXXXXXXXXXXXXXXXXXXXXXXXXXEB XX XXXXXXXXXXXGB2015XXBXXB.2X ...

**endnote**XXXXXXXX {X#}XXXXXXXXXXXX - XX

XXXXXXXXXXXXXXXXXXXX XXXXXXXXXXXXXXXendnoteXXXXwordXX1XXXXXXXX XXXXXXXXXXXXXXX1XXXXXX2XXXX XXXXXXXXXXX2XXXX  
XendnoteXXXXXXXXXXXXXXXXXXXXXXXXXXXXXXXXXXXX XXXXXXXXXXXXXXX2XendnoteXXXXXXXXXXXXXX XX ...

XXXXXXXXXXXXXXXXXXXX - XX

XXXXXXXXXXXXXX U tility Patents XXXX (XXXXXX Patent Applications XXXXXXXX Design Patents XXXXXXXX Plant  
Patent XXXX Reexamination Certificate XXXXXXXX (B) Reissue Patent XXXXXXXXX (Re) Defensive  
Publication XXXXXXXX (T)1985 XXXX Statutory Invention Registration XSIRXXXXXXXXXX ...

XX ...

XXXXXXXXXXXXXXXXXXXX2005X12X8X XXX...

Explore our detailed guide on the 2005 Chevy Tahoe evap system diagram. Understand its components and functionality. Learn more for expert tips and insights!

[Back to Home](#)