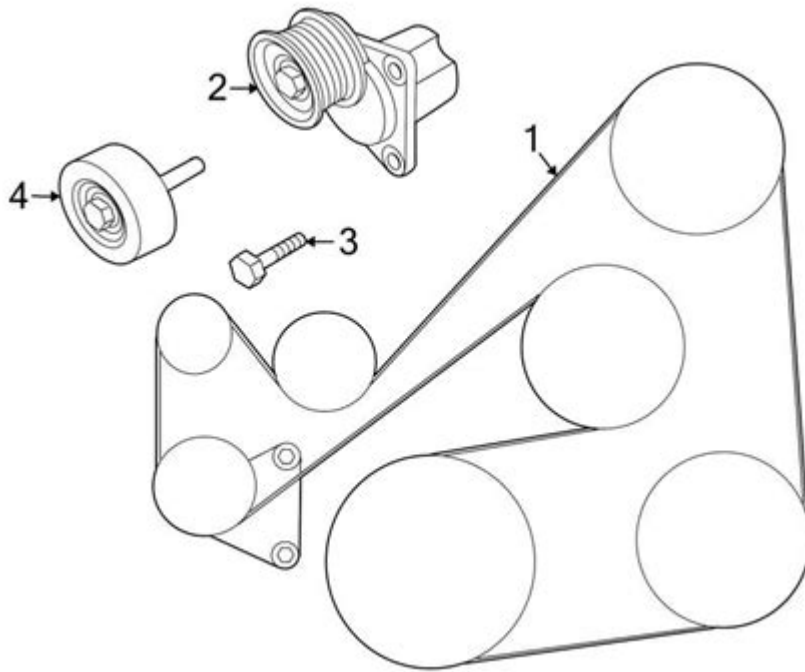


2008 Mazda 3 Serpentine Belt Diagram



2008 mazda 3 serpentine belt diagram is a crucial element for any Mazda 3 owner or mechanic when it comes to understanding the vehicle's engine system. The serpentine belt plays a vital role in driving various engine components such as the alternator, power steering pump, air conditioning compressor, and water pump. Knowing how this belt is routed and what it looks like can help in maintenance and troubleshooting issues related to engine performance. In this article, we will explore the serpentine belt diagram for the 2008 Mazda 3, its components, the importance of regular inspection, and replacement tips.

Understanding the Serpentine Belt

The serpentine belt is a single continuous belt that wraps around multiple pulleys in an engine. Unlike older vehicles that often used multiple belts, the serpentine belt simplifies the system, making it more efficient and easier to maintain.

Key Functions of the Serpentine Belt

The serpentine belt serves several essential functions, including:

- **Power Generation:** It drives the alternator, which generates electricity to power the vehicle's electrical systems.
- **Steering Assistance:** The belt powers the power steering pump, providing ease of steering.

- **Climate Control:** It drives the air conditioning compressor, helping to regulate cabin temperatures.
- **Cooling System:** The belt is also connected to the water pump, which circulates coolant throughout the engine.

2008 Mazda 3 Serpentine Belt Diagram

The serpentine belt diagram for the 2008 Mazda 3 is a visual representation of how the belt is routed around the various pulleys. It is essential for anyone performing maintenance or repairs on the vehicle. Understanding the diagram can prevent improper installation and ensure the belt functions correctly.

Key Components of the Serpentine Belt System

Before diving into the diagram, it's important to familiarize yourself with the key components involved:

1. **Alternator Pulley:** This pulley is responsible for charging the battery and powering the electrical systems.
2. **Power Steering Pump Pulley:** This component assists in steering the vehicle and requires power from the serpentine belt.
3. **Air Conditioning Compressor Pulley:** Connected to the air conditioning system, it helps cool the cabin.
4. **Water Pump Pulley:** Integral to the cooling system, it circulates coolant throughout the engine.
5. **Tensioner Pulley:** This maintains the correct tension on the serpentine belt, preventing slippage.
6. **Idler Pulley:** Helps guide the belt around the engine components.

Visual Representation of the 2008 Mazda 3 Serpentine Belt Diagram

Here is a simplified description of the serpentine belt routing for the 2008 Mazda 3:

1. **Start at the crankshaft pulley:** The belt loops around this component first.
2. **Route to the alternator pulley:** Move from the crankshaft to the alternator.
3. **Continue to the power steering pump pulley:** The belt then goes to the power steering pump.
4. **Next, route to the air conditioning compressor pulley:** Follow the path to the AC compressor.
5. **Then to the water pump pulley:** The belt continues to the water pump.
6. **Finally, return to the tensioner pulley:** The belt ends back at the tensioner.

For a detailed visual, refer to a service manual or online resources that provide diagrams specific to the 2008 Mazda 3.

Importance of Regular Inspection

Regular inspection of the serpentine belt is essential for maintaining the overall health of your vehicle. Here are some reasons why you should routinely check your serpentine belt:

Signs of Wear and Tear

Look for the following symptoms during your inspection:

- Cracks: Any visible cracks on the surface of the belt can indicate it's time for a replacement.
- Fraying: The edges of the belt may start to fray, which can lead to belt failure.
- Glazing: A shiny appearance on the belt surface suggests it's slipping and may not grip the pulleys effectively.
- Squealing Noises: Unusual noises while the engine is running can indicate that the belt is worn or misaligned.

Recommended Inspection Frequency

- Every Oil Change: Check the serpentine belt during each oil change, at least every 5,000 to 7,500 miles.
- Before Long Trips: Always inspect the belt before embarking on long trips to prevent breakdowns.
- Annually: A thorough inspection should be performed at least once a year.

Replacement Tips for the 2008 Mazda 3 Serpentine Belt

If you find that your serpentine belt shows signs of wear, it's essential to replace it promptly. Here are some tips for replacing the serpentine belt on a 2008 Mazda 3:

Tools You'll Need

- Socket set: Usually, a ratchet with a socket will be needed.
- Wrench: A wrench may be required to release the tension on the belt.
- New serpentine belt: Ensure you purchase the correct size for your Mazda 3.

Steps to Replace the Serpentine Belt

1. Disconnect the battery: Always disconnect the negative terminal to prevent electrical issues.
2. Locate the tensioner pulley: Use a wrench or socket to relieve tension on the belt by turning the tensioner.

3. Remove the old belt: Carefully slide it off the pulleys. Take note of the routing to assist with installing the new belt.
4. Install the new belt: Route the new belt according to the diagram, ensuring it sits correctly on all pulleys.
5. Reapply tension: Release the tensioner to apply tension to the new belt.
6. Reconnect the battery: Reconnect the negative terminal and check the belt's operation by starting the engine.

Conclusion

Understanding the **2008 mazda 3 serpentine belt diagram** is essential for any Mazda 3 owner. Regular inspection and timely replacement of the serpentine belt can save you from costly repairs and keep your vehicle running smoothly. By familiarizing yourself with the components and following proper maintenance practices, you can ensure the longevity of your vehicle's engine system. Always refer to your vehicle's service manual for specific details and instructions, and consult a professional mechanic if you are unsure about performing any of the tasks mentioned.

Frequently Asked Questions

What is a serpentine belt in a 2008 Mazda 3?

The serpentine belt in a 2008 Mazda 3 is a long, single belt that drives multiple peripheral devices such as the alternator, power steering pump, and air conditioning compressor.

Where can I find the serpentine belt diagram for a 2008 Mazda 3?

The serpentine belt diagram for a 2008 Mazda 3 can typically be found in the owner's manual, on a sticker under the hood, or through online automotive resources.

What are the symptoms of a failing serpentine belt in a 2008 Mazda 3?

Symptoms of a failing serpentine belt include squeaking or squealing noises, loss of power steering, overheating engine, and malfunctioning accessories like the alternator or air conditioning.

How often should the serpentine belt be replaced in a 2008 Mazda 3?

It is generally recommended to inspect the serpentine belt every 60,000 to 100,000 miles and replace it if signs of wear, such as cracks or fraying, are present.

Can I replace the serpentine belt myself on a 2008 Mazda 3?

Yes, replacing the serpentine belt on a 2008 Mazda 3 can be done by a DIYer with basic mechanical skills, though it's important to follow the correct procedures and use the serpentine belt diagram.

Dec 21, 2022 · 1. 2. 3. 4. ...

00000000000000000000 - 0000

00000000000000000000100001921070230031002000019220701600230030000192306012002000400
00192501011002200500 ...

000000000000000000000000 - 00

000000000000000000000000 00 000000000000PDF0000002020000000000 0000-0000000000001946-20210 00
00000 ...

000000 **2008** 00000000000000000000 ...

Jun 11, 2025 · 000000 2008 000000000000000000000000 000000000000 00000000000000000000000000
000

"Need a 2008 Mazda 3 serpentine belt diagram? Find detailed visuals and step-by-step guidance to help you replace or inspect your belt. Learn more!"

[Back to Home](#)