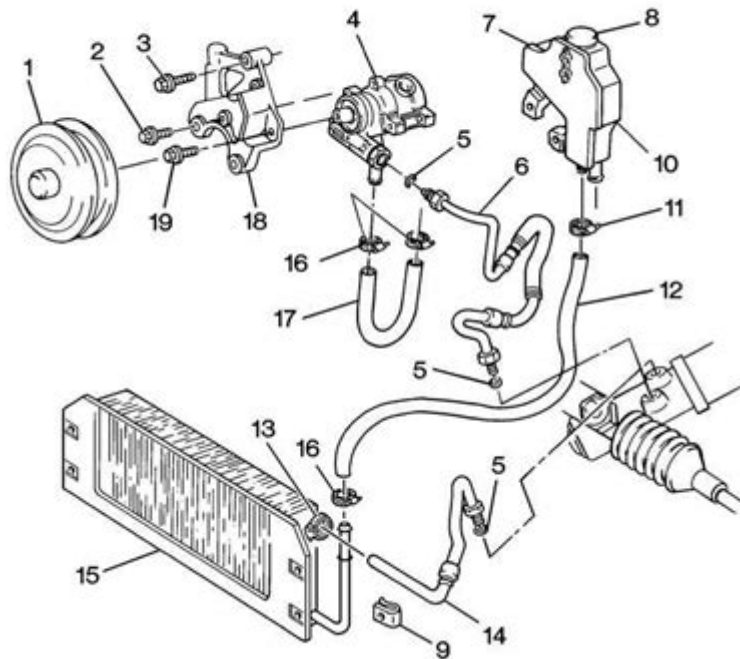


2001 Chevy Silverado Power Steering Hose Diagram

1Y06-030 08/17/2001



2001 Chevy Silverado power steering hose diagram is an essential tool for any Chevrolet Silverado owner or mechanic looking to diagnose and repair issues related to the power steering system. The power steering system in your Silverado plays a crucial role in ensuring your vehicle handles smoothly while providing the driver with the necessary control and comfort. Understanding the layout and functionality of the power steering hoses is vital for maintaining the system's efficiency and performance. In this article, we will delve into the components of the power steering system, the importance of the power steering hose, and provide a detailed overview of the 2001 Chevy Silverado power steering hose diagram.

Understanding the Power Steering System

The power steering system in a 2001 Chevy Silverado is designed to make steering easier by using hydraulic force. This system consists of several key components:

Key Components of the Power Steering System

1. **Power Steering Pump:** This pump is driven by the engine and is responsible for generating the hydraulic pressure needed to assist in steering.
2. **Power Steering Fluid Reservoir:** This container holds the power steering fluid, which is crucial for the hydraulic system to function.
3. **Power Steering Hoses:** These hoses transport the power steering fluid between the pump, steering gear, and the reservoir.
4. **Steering Gear:** The steering gear converts the rotational motion from the steering wheel into linear motion, allowing the wheels to turn.
5. **Steering Rack and Pinion:** This is a more modern design that converts the rotational motion from the steering wheel into the linear motion needed for steering.

The Role of Power Steering Hoses

Power steering hoses are vital components of the power steering system. They serve several essential functions:

- **Fluid Transport:** The primary purpose of the power steering hoses is to transport fluid between the power steering pump, the steering gear, and the reservoir.
- **Pressure Maintenance:** These hoses are designed to withstand high pressure generated by the pump, ensuring that fluid flows smoothly without leaks.
- **Durability:** Made from resilient materials, power steering hoses are built to endure the harsh conditions of the engine compartment, including heat and vibration.

Types of Power Steering Hoses

There are typically two types of power steering hoses in a 2001 Chevy Silverado:

1. **High-Pressure Hose:** This hose connects the power steering pump to the steering gear. It carries the fluid under high pressure.
2. **Return Hose:** This hose sends the fluid back from the steering gear to the reservoir after it has assisted in steering.

Understanding the distinction between these two types is essential for proper diagnosis and repair.

Importance of the Power Steering Hose Diagram

The 2001 Chevy Silverado power steering hose diagram is crucial for several reasons:

- **Troubleshooting:** When diagnosing power steering issues, the diagram can

help identify which hose may be leaking or malfunctioning.

- Replacement: Knowing the layout of the hoses can assist in the replacement process, making it easier to remove and install new hoses.
- Maintenance: Regular inspection of the power steering hoses can prevent future issues. The diagram provides a reference for checking the condition of the hoses.

Common Issues with Power Steering Hoses

Power steering hoses can develop several common issues over time:

1. Leaks: Over time, hoses may crack or become damaged, leading to fluid leaks. This can result in a loss of power steering assist.
2. Wear and Tear: Constant exposure to heat, oil, and vibration can cause hoses to wear out, leading to potential failure.
3. Kinks or Bends: Hoses can develop kinks or bends that restrict fluid flow, compromising the performance of the power steering system.

If you experience difficulty in steering or notice fluid under your vehicle, it may indicate a problem with the power steering hoses.

How to Read the Power Steering Hose Diagram

Understanding how to read the 2001 Chevy Silverado power steering hose diagram can significantly aid in repairs and maintenance. Here are some tips:

- Identify Components: Familiarize yourself with the various components represented in the diagram, such as the pump, reservoir, and steering gear.
- Trace Fluid Path: Follow the lines in the diagram to understand how fluid flows through the system, from the pump to the steering gear and back to the reservoir.
- Look for Labels: Most diagrams include labels indicating high-pressure and return hoses, making it easier to identify which hose requires attention.

Visual Representation of the Diagram

While this article cannot provide a visual representation, you can find the power steering hose diagram for the 2001 Chevy Silverado in several places:

1. Service Manuals: Official Chevrolet service manuals often include detailed diagrams.
2. Online Forums: Automotive forums and communities frequently share diagrams and troubleshooting tips.
3. Repair Websites: Websites that specialize in vehicle repair may provide access to diagrams and additional resources.

Steps to Replace Power Steering Hoses

If you find that your power steering hoses need replacement, follow these steps:

1. **Gather Tools and Materials:** You will need new hoses, power steering fluid, a wrench set, and possibly a hose clamp tool.
2. **Safety First:** Ensure the vehicle is on a level surface, and the engine is turned off. Allow the engine to cool if it was recently running.
3. **Locate the Hoses:** Refer to your power steering hose diagram to locate the high-pressure and return hoses.
4. **Drain Power Steering Fluid:** Place a catch pan under the power steering reservoir and remove the cap to drain the fluid.
5. **Remove Old Hoses:** Loosen and remove the clamps holding the hoses in place and carefully detach them from the connections.
6. **Install New Hoses:** Attach the new hoses in the same configuration as the old ones, ensuring that they are securely fastened.
7. **Refill Power Steering Fluid:** Fill the reservoir with new power steering fluid, following the manufacturer's specifications.
8. **Test the System:** Start the engine and turn the steering wheel from lock to lock to circulate the fluid and check for leaks.

Maintenance Tips for Power Steering Hoses

To prolong the life of your power steering hoses, consider the following maintenance tips:

- **Regular Inspections:** Check the hoses regularly for signs of wear, leaks, or cracks.
- **Fluid Level Checks:** Ensure that the power steering fluid is at the correct level, as low fluid can lead to hose damage.
- **Avoiding Heat Sources:** Keep hoses away from direct heat sources to prevent degradation.

By understanding the importance of the 2001 Chevy Silverado power steering hose diagram and maintaining your power steering system, you can ensure a smoother driving experience and extend the life of your vehicle. Regular maintenance and prompt repairs can save you time and money in the long run, allowing you to enjoy your Chevy Silverado to its fullest.

Frequently Asked Questions

What is the purpose of the power steering hose in a

2001 Chevy Silverado?

The power steering hose delivers hydraulic fluid from the power steering pump to the steering gear, allowing for easier steering.

Where can I find a power steering hose diagram for a 2001 Chevy Silverado?

You can find a power steering hose diagram in the vehicle's service manual, online automotive forums, or websites that specialize in repair guides.

What are the common symptoms of a failing power steering hose in a 2001 Chevy Silverado?

Common symptoms include difficulty steering, whining noises when turning the wheel, and visible leaks around the hose.

How can I tell if my 2001 Chevy Silverado power steering hose needs to be replaced?

Inspect the hose for cracks, leaks, or bulges. If you notice any signs of damage or if the steering feels stiff, it may need replacement.

What tools are needed to replace the power steering hose on a 2001 Chevy Silverado?

You'll typically need a socket set, wrenches, a power steering fluid catch pan, and possibly pliers for hose clamps.

Can I drive my 2001 Chevy Silverado with a damaged power steering hose?

It's not advisable to drive with a damaged power steering hose, as it can lead to steering failure and pose a safety risk.

Is there a specific torque specification for the power steering hose fittings on a 2001 Chevy Silverado?

Yes, the torque specifications can be found in the vehicle's service manual; typically, it's around 15-20 ft-lbs, but always refer to the manual for exact figures.

What type of power steering fluid is recommended for a 2001 Chevy Silverado?

The 2001 Chevy Silverado typically requires GM Power Steering Fluid or an equivalent, but it's best to check the owner's manual for specifications.

Find other PDF article:

<https://soc.up.edu.ph/60-flick/Book?ID=iCi37-3714&title=the-masque-of-the-red-death-edgar-allan-poe.pdf>

[2001 Chevy Silverado Power Steering Hose Diagram](#)

2001 Chevrolet Silverado - PDF

2001 Chevrolet Silverado Power Steering Hose Diagram "PDF"
Discovery One ...

2001 Chevrolet Silverado - PDF

2001 Chevrolet Silverado Power Steering Hose Diagram "PDF" 2001 Chevrolet Silverado Power Steering Hose Diagram ...

2001 Chevrolet Silverado (2001) Power Steering Hose Diagram

2001 Chevrolet Silverado (2001) Power Steering Hose Diagram 2001 Chevrolet Silverado Power Steering Hose Diagram 11 ...

2001 Chevrolet Silverado (2001) Power Steering Hose Diagram

May 11, 2025 · 2001 Chevrolet Silverado (2001) Power Steering Hose Diagram 21 ...

2001 Chevrolet Silverado 2001: A Space Odyssey (1968) Power Steering Hose Diagram ...

May 16, 2025 · 2001 Chevrolet Silverado 2001: A Space Odyssey (1968) Power Steering Hose Diagram 2001 Chevrolet Silverado Power Steering Hose Diagram ...

2001 Chevrolet Silverado ~2024 Power Steering Hose Diagram

Nov 13, 2024 · 2001 Chevrolet Silverado ~2024 Power Steering Hose Diagram 2001 Chevrolet Silverado Power Steering Hose Diagram ...

2001 Chevrolet Silverado - PDF

2001 Chevrolet Silverado Power Steering Hose Diagram 2001 Chevrolet Silverado Power Steering Hose Diagram 2001 Chevrolet Silverado Power Steering Hose Diagram ...

2001 Chevrolet Silverado Black Hawk Down (2001) Power Steering Hose Diagram

May 18, 2025 · 2001 Chevrolet Silverado Black Hawk Down (2001) Power Steering Hose Diagram 1 ...

2000 Chevrolet Silverado 2001 Chevrolet Silverado 2002 Chevrolet Silverado ...

2000 Chevrolet Silverado 2001 Chevrolet Silverado 2002 Chevrolet Silverado ... 1 ...

2001 Chevrolet Silverado - PDF

2001 Chevrolet Silverado Power Steering Hose Diagram 2001 Chevrolet Silverado Power Steering Hose Diagram 2001 Chevrolet Silverado Power Steering Hose Diagram ...

2001 Chevrolet Silverado - PDF

2001 Chevrolet Silverado Power Steering Hose Diagram "PDF"

Discovery One

2001 -
2001 “” 2001
...

(2001)
(2001) 11
...

(2001)
May 11, 2025 · (2001) 21
...

2001: A Space Odyssey (1968)
May 16, 2025 · 2001: A Space Odyssey (1968)
...

2001~2024 -
Nov 13, 2024 · 2001~2024
...

-
...

Black Hawk Down (2001)
May 18, 2025 · Black Hawk Down (2001) 1

200020012002.....
200020012002..... 1
...

2001 -
2001 2001 2001
...

Discover the essential 2001 Chevy Silverado power steering hose diagram for easy repairs. Get detailed insights and tips to ensure smooth steering. Learn more!

[Back to Home](#)