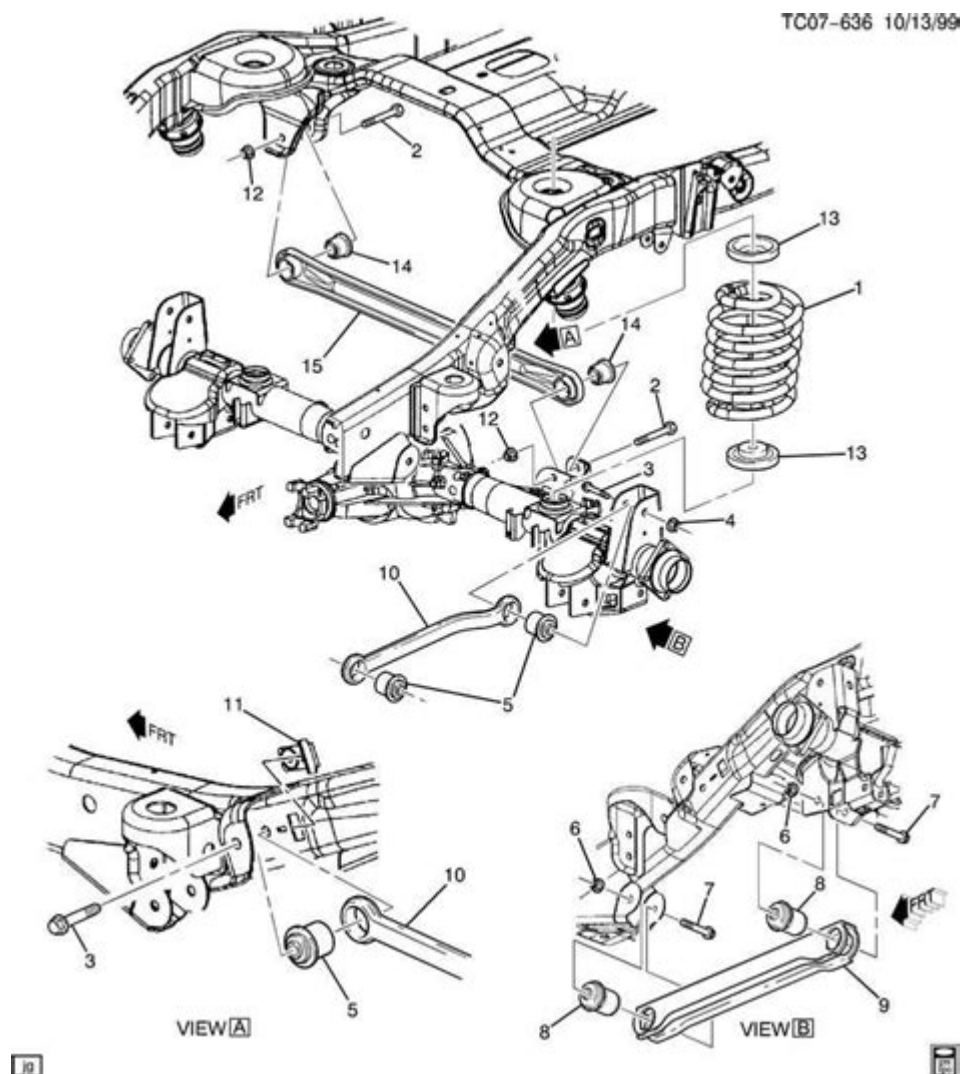


2005 Chevy Tahoe Front Suspension Diagram



2005 CHEVY TAHOE FRONT SUSPENSION DIAGRAM IS AN ESSENTIAL REFERENCE FOR BOTH DIY ENTHUSIASTS AND PROFESSIONAL MECHANICS. UNDERSTANDING THE LAYOUT AND COMPONENTS OF THE FRONT SUSPENSION SYSTEM CAN SIGNIFICANTLY AID IN DIAGNOSING ISSUES, PERFORMING MAINTENANCE, AND MAKING UPGRADES. IN THIS ARTICLE, WE WILL DELVE INTO THE INTRICACIES OF THE 2005 CHEVY TAHOE FRONT SUSPENSION, PROVIDING A COMPREHENSIVE OVERVIEW OF ITS COMPONENTS, FUNCTIONS, AND MAINTENANCE TIPS, ALONG WITH A DETAILED EXPLANATION OF THE SUSPENSION DIAGRAM.

OVERVIEW OF THE 2005 CHEVY TAHOE FRONT SUSPENSION SYSTEM

THE FRONT SUSPENSION SYSTEM OF THE 2005 CHEVY TAHOE PLAYS A CRUCIAL ROLE IN ENSURING A SMOOTH RIDE AND STABLE HANDLING. IT ABSORBS SHOCKS FROM THE ROAD, MAINTAINS TIRE CONTACT, AND SUPPORTS THE VEHICLE'S WEIGHT. THE SUSPENSION SYSTEM IS PRIMARILY COMPOSED OF VARIOUS COMPONENTS THAT WORK TOGETHER TO ACHIEVE THESE FUNCTIONS.

KEY COMPONENTS OF THE FRONT SUSPENSION

THE FRONT SUSPENSION OF THE 2005 CHEVY TAHOE IS DESIGNED WITH SEVERAL KEY COMPONENTS:

- **CONTROL ARMS:** THESE ARE PIVOTAL IN CONNECTING THE VEHICLE'S FRAME TO THE WHEEL ASSEMBLY. THEY ALLOW FOR VERTICAL MOVEMENT WHILE MAINTAINING LATERAL STABILITY.
- **BALL JOINTS:** SERVING AS THE CONNECTION POINT BETWEEN THE CONTROL ARMS AND THE STEERING KNUCKLES, BALL JOINTS FACILITATE MOVEMENT AND ENSURE A SMOOTH STEERING RESPONSE.
- **STRUTS/SHOCKS:** THESE COMPONENTS ABSORB THE IMPACT FROM THE ROAD AND CONTROL THE BOUNCE OF THE VEHICLE, CONTRIBUTING TO RIDE QUALITY AND HANDLING.
- **SWAY BAR:** ALSO KNOWN AS AN ANTI-ROLL BAR, THIS COMPONENT HELPS REDUCE BODY ROLL DURING CORNERING, ENHANCING STABILITY.
- **SPINDLE:** THE SPINDLE IS THE PART THAT CONNECTS THE WHEEL HUB TO THE SUSPENSION, ALLOWING FOR ROTATION AND MOVEMENT.
- **WHEEL HUB:** THE HUB HOUSES THE WHEEL BEARINGS AND ATTACHES THE WHEEL TO THE VEHICLE, PLAYING A VITAL ROLE IN WHEEL ALIGNMENT AND ROTATION.

UNDERSTANDING THE FRONT SUSPENSION DIAGRAM

THE FRONT SUSPENSION DIAGRAM IS A VISUAL REPRESENTATION OF THE COMPONENTS AND THEIR ARRANGEMENT. IT SERVES AS A VALUABLE TOOL FOR UNDERSTANDING HOW EACH PART INTERACTS WITHIN THE SYSTEM. THE DIAGRAM TYPICALLY INCLUDES LABELED COMPONENTS, SHOWING HOW THEY ARE CONNECTED AND THEIR RELATIVE POSITIONS.

COMPONENTS LABELED IN THE DIAGRAM

WHEN STUDYING THE 2005 CHEVY TAHOE FRONT SUSPENSION DIAGRAM, YOU WILL NOTICE SEVERAL CRITICAL COMPONENTS LABELED. HERE'S A BREAKDOWN OF WHAT TO LOOK FOR:

1. **UPPER CONTROL ARM:** LOCATED AT THE TOP OF THE WHEEL ASSEMBLY, IT CONNECTS THE WHEEL TO THE CHASSIS.
2. **LOWER CONTROL ARM:** SITUATED BELOW THE UPPER CONTROL ARM, IT PROVIDES STABILITY AND SUPPORT FOR THE WHEEL.
3. **BALL JOINT:** FOUND AT THE END OF BOTH CONTROL ARMS, IT ALLOWS FOR MOVEMENT IN MULTIPLE DIRECTIONS.
4. **STRUT ASSEMBLY:** THE STRUT ASSEMBLY, WHICH CONSISTS OF A SHOCK ABSORBER AND A COIL SPRING, IS CRUCIAL FOR ABSORBING ROAD IMPACTS.
5. **SWAY BAR LINK:** THESE LINKS CONNECT THE SWAY BAR TO THE CONTROL ARMS, HELPING TO CONTROL BODY ROLL.
6. **STEERING KNUCKLE:** THIS COMPONENT HOUSES THE BALL JOINT AND CONNECTS TO THE WHEEL HUB, ALLOWING FOR WHEEL MOVEMENT DURING STEERING.

IMPORTANCE OF REGULAR MAINTENANCE

MAINTAINING THE FRONT SUSPENSION SYSTEM IS CRUCIAL FOR THE OVERALL PERFORMANCE AND SAFETY OF THE 2005 CHEVY TAHOE. REGULAR INSPECTIONS CAN HELP IDENTIFY POTENTIAL ISSUES BEFORE THEY ESCALATE INTO COSTLY REPAIRS.

SIGNS OF SUSPENSION PROBLEMS

PAY ATTENTION TO THE FOLLOWING SIGNS, WHICH MAY INDICATE THAT YOUR FRONT SUSPENSION REQUIRES MAINTENANCE:

- UNEVEN TIRE WEAR, WHICH MAY SUGGEST ALIGNMENT ISSUES.
- EXCESSIVE BOUNCING OR SWAYING DURING DRIVING, INDICATING WORN SHOCKS OR STRUTS.
- CLUNKING NOISES WHEN DRIVING OVER BUMPS, OFTEN A SIGN OF WORN OR DAMAGED CONTROL ARMS OR BALL JOINTS.
- DIFFICULTY IN STEERING, WHICH MAY POINT TO ISSUES WITH THE STEERING KNUCKLE OR BALL JOINTS.
- VIBRATIONS IN THE STEERING WHEEL, INDICATING POSSIBLE ALIGNMENT ISSUES OR WORN COMPONENTS.

MAINTENANCE TIPS FOR THE FRONT SUSPENSION

TO ENSURE THE LONGEVITY AND FUNCTIONALITY OF THE FRONT SUSPENSION SYSTEM, CONSIDER THE FOLLOWING MAINTENANCE TIPS:

1. **REGULAR INSPECTIONS:** PERFORM VISUAL INSPECTIONS OF THE SUSPENSION COMPONENTS FOR SIGNS OF WEAR OR DAMAGE.
2. **CHECK ALIGNMENTS:** ENSURE THE VEHICLE IS PROPERLY ALIGNED TO PREVENT UNEVEN TIRE WEAR AND INSTABILITY.
3. **REPLACE WORN COMPONENTS:** ADDRESS ANY WORN OR DAMAGED PARTS PROMPTLY TO MAINTAIN OPTIMAL PERFORMANCE.
4. **FLUSH AND REPLACE FLUIDS:** KEEP THE STRUTS AND SHOCKS IN GOOD CONDITION BY FLUSHING AND REPLACING FLUIDS AS RECOMMENDED.
5. **ROTATE TIRES:** REGULAR TIRE ROTATION CAN HELP ENSURE EVEN WEAR, CONTRIBUTING TO BETTER SUSPENSION PERFORMANCE.

UPGRADING THE SUSPENSION SYSTEM

MANY TAHOE OWNERS CHOOSE TO UPGRADE THEIR SUSPENSION SYSTEMS FOR ENHANCED PERFORMANCE OR OFF-ROAD CAPABILITIES. UNDERSTANDING THE FRONT SUSPENSION DIAGRAM CAN HELP IN MAKING INFORMED DECISIONS ABOUT UPGRADES.

COMMON SUSPENSION UPGRADES

CONSIDER THE FOLLOWING UPGRADES IF YOU ARE LOOKING TO ENHANCE YOUR 2005 CHEVY TAHOE'S FRONT SUSPENSION:

- **PERFORMANCE SHOCKS AND STRUTS:** UPGRADE TO HIGH-PERFORMANCE SHOCKS AND STRUTS CAN IMPROVE RIDE QUALITY AND HANDLING.

- **AFTERMARKET CONTROL ARMS:** AFTERMARKET OPTIONS CAN PROVIDE BETTER MATERIALS AND DESIGNS FOR IMPROVED DURABILITY AND PERFORMANCE.
- **UPGRADED SWAY BARS:** THICKER SWAY BARS CAN SIGNIFICANTLY REDUCE BODY ROLL DURING CORNERING.
- **LIFT KITS:** IF YOU WANT TO ENHANCE OFF-ROAD CAPABILITIES, CONSIDER A LIFT KIT TO INCREASE GROUND CLEARANCE.

CONCLUSION

THE **2005 CHEVY TAHOE FRONT SUSPENSION DIAGRAM** IS A VITAL RESOURCE FOR UNDERSTANDING THE COMPLEX SYSTEM THAT CONTRIBUTES TO RIDE QUALITY AND VEHICLE STABILITY. BY FAMILIARIZING YOURSELF WITH THE COMPONENTS, FUNCTIONS, AND MAINTENANCE PRACTICES, YOU CAN ENSURE YOUR TAHOE REMAINS IN TOP CONDITION. WHETHER YOU'RE PERFORMING ROUTINE MAINTENANCE OR CONSIDERING UPGRADES, UNDERSTANDING THE FRONT SUSPENSION WILL HELP YOU MAKE INFORMED DECISIONS AND ENSURE A SAFER DRIVING EXPERIENCE.

FREQUENTLY ASKED QUESTIONS

WHAT IS THE PURPOSE OF THE FRONT SUSPENSION IN A 2005 CHEVY TAHOE?

THE FRONT SUSPENSION IN A 2005 CHEVY TAHOE IS DESIGNED TO SUPPORT THE VEHICLE'S WEIGHT, ABSORB SHOCKS FROM THE ROAD, AND MAINTAIN PROPER WHEEL ALIGNMENT FOR BETTER HANDLING AND STABILITY.

WHERE CAN I FIND A DETAILED FRONT SUSPENSION DIAGRAM FOR A 2005 CHEVY TAHOE?

A DETAILED FRONT SUSPENSION DIAGRAM FOR A 2005 CHEVY TAHOE CAN USUALLY BE FOUND IN THE VEHICLE'S SERVICE MANUAL, ONLINE AUTOMOTIVE REPAIR DATABASES, OR FORUMS DEDICATED TO CHEVY TAHOE ENTHUSIASTS.

WHAT COMPONENTS ARE TYPICALLY INCLUDED IN THE FRONT SUSPENSION DIAGRAM OF A 2005 CHEVY TAHOE?

THE FRONT SUSPENSION DIAGRAM OF A 2005 CHEVY TAHOE TYPICALLY INCLUDES COMPONENTS SUCH AS THE CONTROL ARMS, BALL JOINTS, STRUTS, SWAY BAR, AND TIE RODS.

HOW DO I READ THE FRONT SUSPENSION DIAGRAM FOR MY 2005 CHEVY TAHOE?

TO READ THE FRONT SUSPENSION DIAGRAM, FAMILIARIZE YOURSELF WITH THE SYMBOLS USED FOR EACH COMPONENT, AND FOLLOW THE LINES THAT REPRESENT CONNECTIONS AND RELATIONSHIPS BETWEEN THE PARTS.

WHAT ARE COMMON ISSUES WITH THE FRONT SUSPENSION OF A 2005 CHEVY TAHOE?

COMMON ISSUES WITH THE FRONT SUSPENSION OF A 2005 CHEVY TAHOE INCLUDE WORN-OUT BALL JOINTS, FAILING STRUTS OR SHOCKS, AND DAMAGED CONTROL ARMS, WHICH CAN LEAD TO POOR HANDLING AND INCREASED TIRE WEAR.

CAN I PERFORM FRONT SUSPENSION REPAIRS ON A 2005 CHEVY TAHOE MYSELF?

YES, MANY FRONT SUSPENSION REPAIRS ON A 2005 CHEVY TAHOE CAN BE PERFORMED BY A DIY MECHANIC WITH THE RIGHT TOOLS AND KNOWLEDGE, BUT IT'S IMPORTANT TO FOLLOW SAFETY GUIDELINES AND ENSURE YOU HAVE A PROPER UNDERSTANDING OF THE SUSPENSION SYSTEM.

WHAT TOOLS DO I NEED TO WORK ON THE FRONT SUSPENSION OF A 2005 CHEVY TAHOE?

TO WORK ON THE FRONT SUSPENSION OF A 2005 CHEVY TAHOE, YOU'LL TYPICALLY NEED BASIC HAND TOOLS SUCH AS WRENCHES, SOCKETS, A JACK, JACK STANDS, AND POSSIBLY SPECIALIZED TOOLS LIKE A BALL JOINT SEPARATOR OR A TORQUE WRENCH.

Find other PDF article:

<https://soc.up.edu.ph/42-scope/files?trackid=gCM23-0222&title=my-cousin-vinny-worksheet-answer-key.pdf>

2005 Chevy Tahoe Front Suspension Diagram

Download 2005 Chevy Tahoe Front Suspension Diagram - PDF

2005 Chevy Tahoe Front Suspension Diagram PDF Download 2020 2005 Chevy Tahoe Front Suspension Diagram 1946-2021 2005 Chevy Tahoe Front Suspension Diagram ...

2005 Chevy Tahoe Front Suspension Diagram? - PDF

2005 Chevy Tahoe Front Suspension Diagram PDF Download 2020 2005 Chevy Tahoe Front Suspension Diagram 1946-2021 2005 Chevy Tahoe Front Suspension Diagram ...

2005 Chevy Tahoe Front Suspension Diagram pdf Download - PDF

2005 Chevy Tahoe Front Suspension Diagram pdf Download 2020 2005 Chevy Tahoe Front Suspension Diagram 1946-2021 2005 Chevy Tahoe Front Suspension Diagram ...

2005 Chevy Tahoe Front Suspension Diagram - PDF

2005 Chevy Tahoe Front Suspension Diagram PDF Download 2020 2005 Chevy Tahoe Front Suspension Diagram 1946-2021 2005 Chevy Tahoe Front Suspension Diagram ...

2005 Chevy Tahoe Front Suspension Diagram - PDF

2005 Chevy Tahoe Front Suspension Diagram PDF Download 2020 2005 Chevy Tahoe Front Suspension Diagram 1946-2021 2005 Chevy Tahoe Front Suspension Diagram ...

2005 Chevy Tahoe Front Suspension Diagram - PDF

2005 Chevy Tahoe Front Suspension Diagram PDF Download 2020 2005 Chevy Tahoe Front Suspension Diagram 1946-2021 2005 Chevy Tahoe Front Suspension Diagram ...

2005 Chevy Tahoe Front Suspension Diagram - PDF

2005 Chevy Tahoe Front Suspension Diagram PDF Download 2020 2005 Chevy Tahoe Front Suspension Diagram 1946-2021 2005 Chevy Tahoe Front Suspension Diagram ...

endnote {#} 2005 Chevy Tahoe Front Suspension Diagram - PDF

2005 Chevy Tahoe Front Suspension Diagram PDF Download 2020 2005 Chevy Tahoe Front Suspension Diagram 1946-2021 2005 Chevy Tahoe Front Suspension Diagram ...

2005 Chevy Tahoe Front Suspension Diagram - PDF

2005 Chevy Tahoe Front Suspension Diagram PDF Download 2020 2005 Chevy Tahoe Front Suspension Diagram 1946-2021 2005 Chevy Tahoe Front Suspension Diagram ...

.....

2005128 ...

-

PDF2020 -1946-2021 ...

? -

08 ...

pdf -

2005 -

2005 20056

-

...

-

200513 200613 200713
2008 ...

-

XXXXXX ...

endnote{#} -

endnoteword1 122
endnote ...

-

U tility Patents (Patent Applications Design Patents Plant
Patent Reexamination Certificate (B) ...

...

2005128 ...

Explore our detailed 2005 Chevy Tahoe front suspension diagram to understand its components and functionality. Learn more about maintenance and repairs today!

[Back to Home](#)