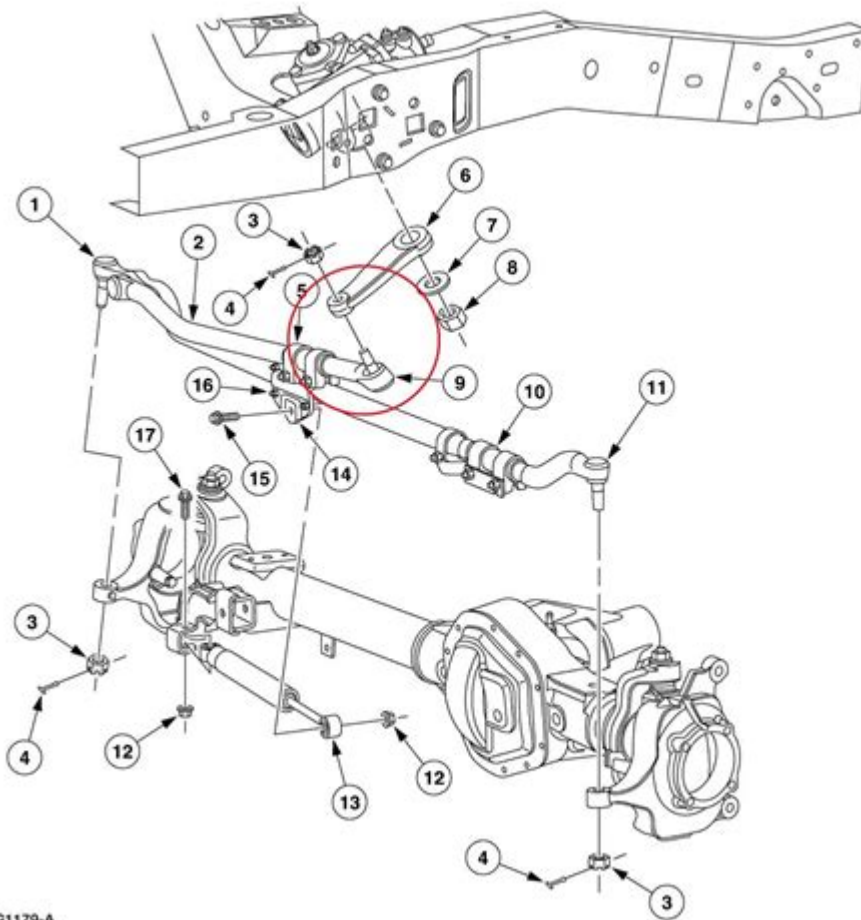


2008 Ford F250 Front End Parts Diagram



2008 Ford F250 front end parts diagram is an essential component for anyone looking to understand, repair, or customize their truck. The Ford F250, part of the Super Duty lineup, is renowned for its durability and capability, making it a popular choice among truck enthusiasts and professionals alike. Understanding the front end parts is crucial for maintenance, repairs, and modifications. This article aims to provide an in-depth look at the front end components of the 2008 Ford F250, their functions, and how to interpret the parts diagram.

Overview of the 2008 Ford F250 Front End

The front end of the 2008 Ford F250 is designed for both performance and safety. It consists of various components that work together to ensure a smooth ride, reliable handling, and effective braking. Key components include:

- Front axle
- Steering system
- Suspension components
- Braking system
- Body parts

Understanding how these parts interact can help in diagnosing issues and performing maintenance.

Key Components of the 2008 Ford F250 Front End

To effectively read and utilize the front end parts diagram, it is essential to recognize the main components involved. Below is a detailed description of each key part:

1. Front Axle

The front axle is crucial for distributing weight and providing stability. It connects the left and right wheels and allows them to rotate. The 2008 Ford F250 typically has a solid front axle, enhancing its off-road capability and load-bearing capacity.

2. Steering System

The steering system of the F250 includes several components that work together to ensure precise control of the vehicle. Important parts include:

- Steering gear
- Pitman arm
- Idler arm
- Tie rod ends

Each of these components plays a critical role in translating driver input into wheel movement.

3. Suspension Components

The suspension system is vital for providing a smooth ride and maintaining tire contact with the road. Key components include:

- Shocks and struts
- Control arms
- Springs
- Ball joints

These parts absorb road shocks, stabilize the vehicle, and allow for proper wheel alignment.

4. Braking System

The braking system consists of several components that work together to stop the vehicle efficiently. Important parts include:

- Brake calipers
- Brake pads
- Rotors
- Brake lines

In the F250, the braking system is designed to handle heavy loads, making it essential for safety.

5. Body Parts

The front end body parts of the F250 not only enhance its aesthetic appeal but also protect internal components from debris and damage. Key body parts include:

- Front bumper
- Fenders
- Grille
- Hood

These components must be maintained properly to ensure both functionality and appearance.

Understanding the 2008 Ford F250 Front End Parts Diagram

The front end parts diagram serves as a visual representation of all the components discussed above. Here's how to read it effectively:

- **Component Labels:** Each part is labeled clearly, allowing you to identify components quickly.
- **Connections:** Arrows and lines often depict how different parts connect or relate to one another.
- **Reference Numbers:** Many diagrams include reference numbers that correspond to a parts list, making it easier to find replacement parts.

Common Issues Associated with Front End Parts

Understanding common issues that can arise with front end components is crucial for any F250 owner. Some frequent problems include:

1. **Worn Ball Joints:** Ball joints can wear out over time, leading to steering issues and uneven tire wear.

2. **Loose Steering Components:** A loose steering gear or tie rod can make steering feel vague and unresponsive.
3. **Brake Wear:** Regularly checking brake pads and rotors is essential, especially if you frequently tow heavy loads.
4. **Suspension Issues:** Worn shocks or struts can lead to a rough ride and decreased handling performance.

Maintenance Tips for the Front End Components

Proper maintenance of the front end parts can prolong the life of your 2008 Ford F250 and ensure optimal performance. Here are some tips:

- **Regular Inspections:** Check for signs of wear or damage in all front end components at least once a year.
- **Lubrication:** Ensure that all moving parts, such as ball joints and tie rods, are adequately lubricated to prevent premature wear.
- **Tire Rotation:** Regularly rotate your tires to promote even wear and maintain proper alignment.
- **Brake Checks:** Inspect brake pads, rotors, and fluid levels regularly to ensure effective braking performance.

Finding Replacement Parts

When it comes time to replace worn or damaged components, knowing where to find quality parts is essential. Here are some options:

1. **OEM Parts:** Original Equipment Manufacturer (OEM) parts are designed specifically for your vehicle and often come with a warranty.
2. **Aftermarket Parts:** Many companies produce aftermarket parts that can be more affordable. Ensure you choose reputable brands.
3. **Auto Parts Stores:** Local auto parts stores often carry a range of parts for the F250, including both OEM and aftermarket options.
4. **Online Retailers:** Websites like Amazon, eBay, and specialized auto parts retailers can provide

a vast selection of parts, often at competitive prices.

Conclusion

The **2008 Ford F250 front end parts diagram** is a vital tool for understanding the truck's complex front end system. By familiarizing yourself with the key components, common issues, and maintenance tips, you can ensure that your F250 remains reliable and performs well for years to come. Whether you are a DIY enthusiast or simply want to know more about your vehicle, a solid understanding of your truck's front end is invaluable. Regular maintenance and timely repairs will save you time and money in the long run, enhancing your driving experience.

Frequently Asked Questions

What are the key components shown in the front end parts diagram of a 2008 Ford F250?

The key components include the front bumper, grille, headlights, radiator support, fenders, and various brackets and mounts.

Where can I find a detailed front end parts diagram for a 2008 Ford F250?

You can find a detailed front end parts diagram in the vehicle's service manual, online auto parts retailers, or automotive forums.

How do I interpret the front end parts diagram for my 2008 Ford F250?

To interpret the diagram, identify the labeled components, understand their connections, and refer to the accompanying legend for additional details.

Are there common issues related to the front end parts on a 2008 Ford F250?

Common issues include wear on suspension components, damage to the front bumper, and issues with headlight alignment.

What tools do I need to replace front end parts on a 2008 Ford F250?

You will typically need wrenches, sockets, screwdrivers, and possibly a jack and jack stands for lifting the vehicle.

Can I upgrade front end parts on my 2008 Ford F250 using aftermarket components?

Yes, many owners choose to upgrade to aftermarket parts for improved performance, aesthetics, or durability, but ensure compatibility with your model.

How often should I inspect the front end components of my 2008 Ford F250?

It's recommended to inspect the front end components at least every 6,000 miles or during regular maintenance checks.

What is the average cost of replacing front end parts on a 2008 Ford F250?

The average cost can vary widely, typically ranging from \$500 to \$2,000 depending on the specific parts and labor involved.

Is it necessary to refer to a professional for front end repairs on a 2008 Ford F250?

While some repairs can be DIY, it's advisable to consult a professional for complex issues or if you're unsure about the repair process.

Find other PDF article:

<https://soc.up.edu.ph/60-flick/Book?dataid=wmL08-3126&title=the-mimic-chapter-3-walkthrough.pdf>

[2008 Ford F250 Front End Parts Diagram](#)

Can I upgrade front end parts on my 2008 Ford F250 using aftermarket components?

Yes, many owners choose to upgrade to aftermarket parts for improved performance, aesthetics, or durability, but ensure compatibility with your model.

...

How often should I inspect the front end components of my 2008 Ford F250?

It's recommended to inspect the front end components at least every 6,000 miles or during regular maintenance checks.

...

What is the average cost of replacing front end parts on a 2008 Ford F250?

The average cost can vary widely, typically ranging from \$500 to \$2,000 depending on the specific parts and labor involved.

...

Is it necessary to refer to a professional for front end repairs on a 2008 Ford F250?

While some repairs can be DIY, it's advisable to consult a professional for complex issues or if you're unsure about the repair process.

“4”“” ...

-

Mar 22, 2024 · 1 2001 ...

Microsoft Visual C++

vc 2008 ...

-

Dec 15, 2023 · 1. ...

-

1921723312192271623319236122041925111225 ...

-

PDF 2020 1946-2021 ...

2008 ...

Jun 11, 2025 · 2008 ...

? -

08 1 ...

(2008) ...

May 13, 2025 · (2008) 1945 ...

-

...

-

Dec 21, 2022 · “” 2 “” 3 “” 4 “” 5 ...

-

Mar 22, 2024 · 1 2001 2 3 ...

Microsoft Visual C++

vc 2008 2005 vc ...

-

Dec 15, 2023 · [\[Title\]](#) [\[Link\]](#) 1. [\[Link\]](#)
[\[Link\]](#) 2. [\[Link\]](#) ...

[\[Title\]](#) - [\[Link\]](#)

[\[Link\]](#)192172331219227162331923612204
[\[Link\]](#)19251122519274275961928

[\[Title\]](#) - [\[Link\]](#)

[\[Link\]](#) PDF[\[Link\]](#)2020 [\[Link\]](#)1946-2021 [\[Link\]](#) ...

[\[Title\]](#) 2008 [\[Link\]](#) ...

Jun 11, 2025 · [\[Title\]](#) 2008 [\[Link\]](#) [\[Link\]](#)

Explore our comprehensive 2008 Ford F250 front end parts diagram! Gain insights into parts and maintenance. Learn more to keep your truck running smoothly!

[Back to Home](#)