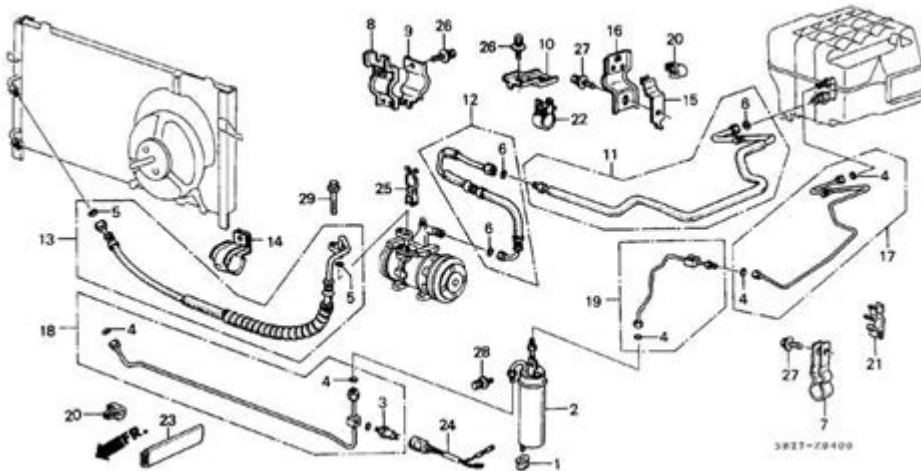


# 2007 Honda Crv Power Steering Diagram



2007 Honda CRV power steering diagram is a critical component for understanding how the power steering system operates in this popular vehicle. The power steering system significantly enhances the driver's ability to steer the vehicle by reducing the amount of effort required to turn the steering wheel. This article will provide a comprehensive overview of the power steering system in the 2007 Honda CRV, including a detailed examination of its components, the power steering diagram, common issues, and maintenance tips.

## Overview of the Power Steering System

The power steering system in the 2007 Honda CRV is designed to assist the driver with steering the vehicle. The system includes various components that work together to provide a smooth and responsive steering experience. Understanding these components is essential for diagnosing problems and performing maintenance.

## Components of the Power Steering System

Here are the primary components of the power steering system in the 2007 Honda CRV:

1. **Power Steering Pump:** This pump is responsible for generating hydraulic pressure that assists in steering. It is usually driven by the engine via a serpentine belt.
2. **Power Steering Fluid Reservoir:** This reservoir holds the hydraulic fluid necessary for the operation of the power steering system. It helps to ensure that there is enough fluid for the pump to create pressure.

3. **Power Steering Hoses:** These hoses transport the hydraulic fluid between the pump and the steering gear. They are designed to withstand high pressure and are often reinforced.
4. **Steering Gear:** The steering gear converts the rotational motion of the steering wheel into lateral movement of the wheels. In the 2007 CRV, this is typically a rack-and-pinion system.
5. **Steering Column:** The steering column connects the steering wheel to the steering gear. It houses the ignition switch and may include additional features like airbag systems.
6. **Steering Rack:** This component contains the gears that facilitate the movement of the vehicle's wheels. It is directly connected to the tie rods, which influence the wheel's angle.
7. **Tie Rods:** These rods connect the steering rack to the wheels and are crucial for transmitting the movement from the steering gear to the wheels.
8. **Power Steering Fluid:** This specialized hydraulic fluid is vital for the operation of the power steering system, providing lubrication and helping to transfer pressure.

## **Power Steering Diagram**

The 2007 Honda CRV power steering diagram provides a visual representation of how the various components are interconnected. While a diagram can vary between different models, the following elements are typically included:

- **Pump Connection:** The diagram shows how the power steering pump connects to the reservoir and the steering gear through hoses.
- **Fluid Flow Direction:** Arrows indicate the flow of hydraulic fluid, showing how it moves from the reservoir to the pump and then to the steering gear.
- **Hose Layout:** The arrangement of pressure and return hoses is depicted, which is critical for understanding the system's operation.
- **Component Locations:** Each component is labeled, making it easier to identify their locations within the vehicle.

You can usually find the power steering diagram in the vehicle's service manual or online in forums dedicated to Honda CRVs.

## **Common Power Steering Issues**

While the power steering system in the 2007 Honda CRV is generally reliable, several common issues can arise. Recognizing these problems can help you address them before they lead to more significant complications.

## **1. Low Power Steering Fluid**

- Symptoms: Difficulty steering, whining noise when turning the wheel, and fluid leaks under the vehicle.
- Solution: Check the fluid level in the reservoir and add the appropriate power steering fluid if necessary. Inspect for leaks in hoses or seals.

## **2. Power Steering Pump Failure**

- Symptoms: Whining noise from the pump, stiff steering, and fluid leaking from the pump.
- Solution: If the pump is failing, it may need to be replaced. Regular inspections can help catch issues early.

## **3. Air in the Power Steering System**

- Symptoms: Erratic steering response, bubbling noise, and steering wheel feels stiff.
- Solution: Bleed the power steering system to remove any trapped air. This process typically involves turning the wheel from lock-to-lock while the engine is running.

## **4. Damaged Hoses**

- Symptoms: Visible wear or cracks in hoses, fluid leaks, and loss of steering assist.
- Solution: Inspect hoses regularly for damage and replace any that are worn or leaking.

## **5. Steering Gear Issues**

- Symptoms: Steering wheel feels loose, uneven tire wear, and difficulty maintaining a straight line.
- Solution: Check the steering gear for wear or damage. In some cases, it may need to be adjusted or replaced.

## **Maintenance Tips for Power Steering System**

To keep the power steering system in optimal condition, regular maintenance is essential. Here are some maintenance tips specifically for the 2007 Honda

CRV:

- **Check Fluid Levels Regularly:** Inspect the power steering fluid level monthly and top off as needed. Make sure to use the correct type of power steering fluid.
- **Inspect Hoses and Connections:** Regularly check hoses for signs of wear, cracks, or leaks. Ensure that all connections are secure.
- **Flush the Power Steering System:** Consider flushing the power steering system every 50,000 miles or according to the manufacturer's recommendations. This helps remove contaminants and maintain fluid quality.
- **Listen for Unusual Noises:** Pay attention to any unusual sounds when turning the steering wheel. Whining or grinding noises can indicate problems with the pump or other components.
- **Professional Inspections:** Schedule professional inspections during routine maintenance to catch any potential issues early.

## Conclusion

The 2007 Honda CRV power steering diagram serves as an essential tool for understanding the intricacies of the power steering system. By familiarizing yourself with its components and maintaining the system regularly, you can ensure a smooth and responsive driving experience. Recognizing common issues and addressing them promptly can save you from costly repairs and enhance your vehicle's performance. Whether you are a DIY enthusiast or a seasoned mechanic, understanding the power steering system's design and function will help you keep your 2007 Honda CRV in top shape for years to come.

## Frequently Asked Questions

### **Where can I find the power steering diagram for a 2007 Honda CR-V?**

You can find the power steering diagram for a 2007 Honda CR-V in the vehicle's service manual, which is available for purchase online or at a Honda dealership. Additionally, websites like AutoZone or RepairPal may offer access to repair guides that include diagrams.

### **What are common issues related to the power steering system in a 2007 Honda CR-V?**

Common issues include fluid leaks, steering fluid contamination, and a failing power steering pump. These problems may lead to difficulty in

steering or increased steering effort.

## How do I troubleshoot power steering problems on a 2007 Honda CR-V using the diagram?

Start by checking the power steering fluid level and inspect the hoses for leaks. Use the power steering diagram to trace the system components, ensuring all connections are secure and looking for wear or damage in the pump and rack.

## Can I repair the power steering system of my 2007 Honda CR-V myself using the diagram?

Yes, if you have basic mechanical skills and tools, you can follow the power steering diagram to replace components like hoses or the pump. However, more complex issues may require professional assistance.

## What tools do I need to access the power steering system in a 2007 Honda CR-V?

You will typically need socket wrenches, screwdrivers, pliers, and possibly a power steering fluid pump or hose clamp tool. Refer to the power steering diagram to identify specific bolts or connectors you may need to remove.

Find other PDF article:

<https://soc.up.edu.ph/06-link/Book?docid=weC35-4411&title=ancc-fnp-exam-blueprint.pdf>

## 2007 Honda Crv Power Steering Diagram

**(2007)-CMoney ...**

(TPE:2007)- - (2007)

□□ *Dead Silence* (2007) □□□□□□□□□□ □□□□

Apr 11, 2025 · [Dead Silence \(2007\)](#) [Watch](#) [Download](#) [1](#)

□□□ (2007)□□□□□□□□□□□□ - □□□□

Apr 10, 2025 · □□ □□ (2007)□□□□□□□□□□□□□□ □□ □□□□□□□□□□□□ □□□□□□□□□□□□ □  
□□□□□□□□□□□□ ...

## The Tudors Season 1 (2007)

May 26, 2025 · [The Tudors Season 1 \(2007\)](#) [16](#) ...

2007□□□13□□□□? - □□□□

2007年13月... 2月... 3月... 4月... 5月... 6月... 7月... 8月... 9月... 10月...

2007年 - CMone... (TPE:2007)- (2007)

Dead Silence (2007) Apr 11, 2025 · Dead Silence (2007) 1

(2007) - Apr 10, 2025 · (2007) ...

The Tudors Season 1 (2007) May 26, 2025 · The Tudors Season 1 (2007) 16 ...

2007年13月? - 2007年13月... 2月... 3月... 4月... 5月... 6月... 7月... 8月...

Discover the essential 2007 Honda CR-V power steering diagram to troubleshoot and repair your vehicle's steering system. Learn more for expert tips and guidance!

[Back to Home](#)