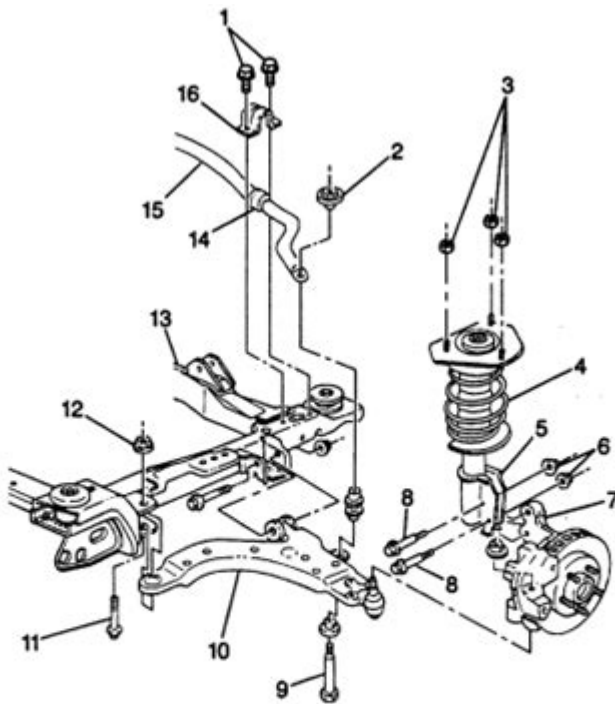


2008 Chevy Impala Rear Suspension Diagram



- | | |
|---|---|
| (1) Front Stabilizer Shaft Insulator Clamp Bolt/screw | (9) Front Stabilizer Shaft Link] |
| (2) Front Stabilizer Shaft Link Nut | (10) Front Lower Control Arm |
| (3) Front Suspension Strut Mount Nut | (11) Front Lower Control Arm Bolt/screw |
| (4) Front Suspension Spring | (12) Front Lower Control Arm Nut |
| (5) Front Suspension Strut | (13) Frame |
| (6) Strut To Knuckle Nut | (14) Front Stabilizer Shaft Insulator |
| (7) Front Steering Knuckle | (15) Front Stabilizer Shaft |
| (8) Strut To Knuckle Bolt/screw | (16) Front Stabilizer Shaft Clamp |

2008 Chevy Impala rear suspension diagram is a crucial resource for mechanics and automotive enthusiasts who want to understand the intricacies of this vehicle's design. The 2008 Chevy Impala is a popular full-size sedan known for its reliability and comfort. Understanding its rear suspension system is essential for maintenance, repairs, and performance upgrades. In this article, we will explore the components of the rear suspension, provide a detailed diagram, and discuss common issues and solutions.

Understanding the Rear Suspension of the 2008 Chevy Impala

The rear suspension system of the 2008 Chevy Impala plays a vital role in ensuring a smooth ride, stability, and handling. It consists of various components that work together to absorb shocks from the road, maintain tire contact, and provide overall vehicle control. The suspension system is designed to support the weight of the vehicle while allowing for vertical movement of the wheels.

Key Components of the Rear Suspension

The rear suspension of the 2008 Chevy Impala includes several key components:

1. **Control Arms:** These are crucial for connecting the rear axle to the vehicle frame, allowing for controlled movement of the wheels.
2. **Shock Absorbers:** Their primary function is to dampen the oscillations of the springs, ensuring that the ride remains smooth and stable.
3. **Springs:** Typically coil springs in the Impala, they support the weight of the vehicle and absorb road bumps.
4. **Stabilizer Bar:** Also known as an anti-roll bar, it helps reduce body roll during cornering by linking the left and right sides of the suspension.
5. **Rear Axle:** This component houses the differential and connects the rear wheels, enabling power transfer from the engine.
6. **Bushings:** These are rubber or polyurethane components that provide cushioning and reduce noise between suspension parts.

Rear Suspension Diagram of the 2008 Chevy Impala

A diagram illustrating the rear suspension system of the 2008 Chevy Impala can be extremely helpful for visual learners and mechanics alike. Below is a basic illustration of the system:

...

[Diagram Placeholder]

- Control Arms
- Shock Absorbers
- Springs
- Stabilizer Bar
- Rear Axle
- Bushings

...

While an actual diagram cannot be displayed here, you can find it in repair manuals or online resources dedicated to Chevy vehicles. This diagram typically labels each component, showing how they interact with one another within the suspension system.

Common Issues with the Rear Suspension

Despite its robust design, the rear suspension of the 2008 Chevy Impala can experience issues over time. Here are some common problems to watch out for:

1. **Worn Shock Absorbers:** If you notice excessive bouncing or a rough ride, your shock absorbers may need replacement. Worn shocks can lead to poor handling and increased stopping distances.
2. **Sagging Springs:** Over time, the coil springs may lose their tension. If the rear of the vehicle appears lower than normal, it might indicate that the springs need replacement.
3. **Control Arm Damage:** Control arms can bend or break after hitting a pothole or during an accident. This can lead to misalignment and uneven tire wear.
4. **Stabilizer Bar Issues:** A broken or worn stabilizer bar can cause excessive body roll during turns, making the vehicle feel unstable.
5. **Bushing Wear:** The bushings can deteriorate due to exposure to the elements, leading to increased noise and vibrations while driving.

Maintenance Tips for the Rear Suspension

To ensure the longevity and proper functioning of your 2008 Chevy Impala's rear suspension, follow these maintenance tips:

- **Regular Inspections:** Check the suspension components for signs of wear or damage at least once a year or during routine service intervals.
- **Keep It Clean:** Dirt and debris can cause premature wear on suspension parts. Regularly wash the undercarriage of your vehicle to prevent buildup.
- **Monitor Tire Pressure:** Keeping your tires properly inflated can reduce stress on the suspension system, enhancing longevity.
- **Listen for Noises:** Pay attention to any unusual sounds while driving, such as clunks or rattles, which could indicate suspension issues.
- **Alignment Checks:** Ensure that your vehicle's alignment is checked regularly, especially after replacing suspension components.

Conclusion

In summary, the **2008 Chevy Impala rear suspension diagram** provides valuable insights into the vehicle's design and functionality. Understanding the components and their roles can help owners maintain their vehicles effectively and address any issues that arise. Regular inspections and maintenance are key to ensuring the longevity of the rear suspension system. If you experience any problems, it's advisable to consult a professional mechanic for a thorough diagnosis and repair. By staying proactive about your vehicle's rear suspension, you can enjoy a smoother, safer ride for years to come.

Frequently Asked Questions

What are the main components of the rear suspension in a 2008 Chevy Impala?

The main components of the rear suspension in a 2008 Chevy Impala include the rear control arms, coil springs, shock absorbers, and the rear axle assembly.

Where can I find a detailed rear suspension diagram for a 2008 Chevy Impala?

A detailed rear suspension diagram for a 2008 Chevy Impala can typically be found in the vehicle's service manual, online automotive repair websites, or forums dedicated to Chevy Impala enthusiasts.

How does the rear suspension design of the 2008 Chevy Impala affect ride quality?

The rear suspension design of the 2008 Chevy Impala, featuring a multi-link setup, helps provide a balance between comfort and handling, offering a smooth ride while maintaining stability during maneuvers.

What are common issues with the rear suspension of a 2008 Chevy Impala?

Common issues with the rear suspension of a 2008 Chevy Impala may include worn out shock absorbers, damaged control arms, and sagging coil springs, which can affect ride quality and handling.

How can I troubleshoot rear suspension problems in my 2008 Chevy Impala?

To troubleshoot rear suspension problems in your 2008 Chevy Impala, inspect for uneven tire wear, listen for unusual noises while driving, check for leaks around the shock absorbers, and visually examine the suspension components for damage.

Is it necessary to replace the entire rear suspension assembly if one component fails on a 2008 Chevy Impala?

It is not always necessary to replace the entire rear suspension assembly if one component fails; often, individual components like control arms or shock absorbers can be replaced independently, depending on the extent of the damage.

Find other PDF article:

<https://soc.up.edu.ph/20-pitch/files?ID=LYL60-9316&title=enterprise-management-trainee-interview-questions.pdf>

2008 Chevy Impala Rear Suspension Diagram

2008 Chevy Impala Rear Suspension Diagram - PDF

2008 Chevy Impala Rear Suspension Diagram - PDF
2008 Chevy Impala Rear Suspension Diagram - PDF
2008 Chevy Impala Rear Suspension Diagram - PDF

2008 Chevy Impala Rear Suspension Diagram - PDF

May 13, 2025 · 2008 Chevy Impala Rear Suspension Diagram - PDF
2008 Chevy Impala Rear Suspension Diagram - PDF

2008 Chevy Impala Rear Suspension Diagram - PDF

2008 Chevy Impala Rear Suspension Diagram - PDF
2008 Chevy Impala Rear Suspension Diagram - PDF
2008 Chevy Impala Rear Suspension Diagram - PDF

2008 Chevy Impala Rear Suspension Diagram - PDF

Dec 21, 2022 · 2008 Chevy Impala Rear Suspension Diagram - PDF
2008 Chevy Impala Rear Suspension Diagram - PDF

2008 Chevy Impala Rear Suspension Diagram - PDF

Mar 22, 2024 · 2008 Chevy Impala Rear Suspension Diagram - PDF
2008 Chevy Impala Rear Suspension Diagram - PDF

2008 Chevy Impala Rear Suspension Diagram - PDF

2008 Chevy Impala Rear Suspension Diagram - PDF
2008 Chevy Impala Rear Suspension Diagram - PDF

2008 Chevy Impala Rear Suspension Diagram - PDF

Dec 15, 2023 · 2008 Chevy Impala Rear Suspension Diagram - PDF
2008 Chevy Impala Rear Suspension Diagram - PDF

2008 Chevy Impala Rear Suspension Diagram - PDF

2008 Chevy Impala Rear Suspension Diagram - PDF
2008 Chevy Impala Rear Suspension Diagram - PDF

Download PDF - PDF

Download PDF - PDF 2020 1946-2021 ...

2008 ...

Jun 11, 2025 · 2008 ...

Download PDF - PDF

Download PDF - PDF 08 ...

2008 ...

May 13, 2025 · 2008 1945 ...

Download PDF - PDF

Download PDF - PDF ...

Download PDF - PDF

Dec 21, 2022 · 1 ...

Download PDF - PDF

Mar 22, 2024 · 1 2001 ...

Microsoft Visual C++ ...

vc 2008 ...

Download PDF - PDF

Dec 15, 2023 · 1 ...

Download PDF - PDF

1921 7 23 31 2 1922 7 16 23 3 1923 6 12 20 4 ...

Download PDF - PDF

Download PDF - PDF 2020 1946-2021 ...

2008 ...

Jun 11, 2025 · 2008 ...

Explore our detailed 2008 Chevy Impala rear suspension diagram

[Back to Home](#)