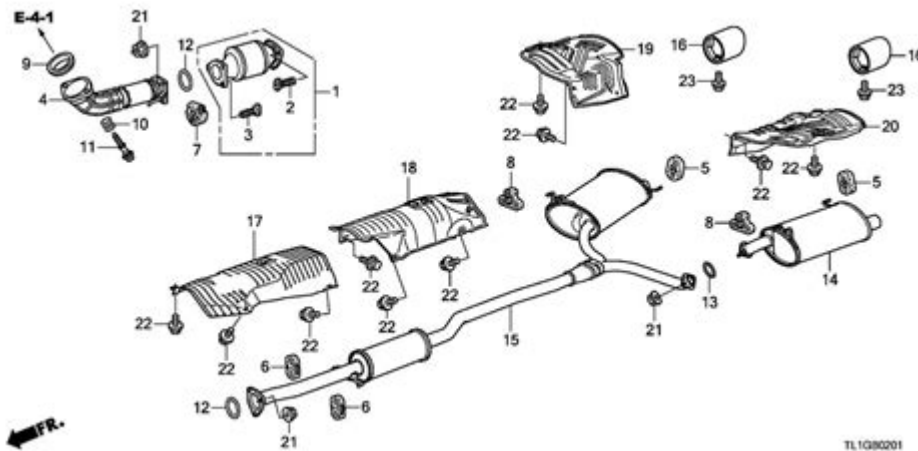


2005 Honda Accord Exhaust System Diagram



2005 Honda Accord exhaust system diagram is an essential component for understanding how the exhaust system functions in this popular vehicle. The exhaust system plays a crucial role in managing the emissions produced by the engine, as well as ensuring optimal performance and fuel efficiency. In this article, we will delve into the various components of the exhaust system, the layout as indicated in the diagram, how it works, and some common issues that may arise. We will also provide tips on maintenance and replacement parts, ensuring your Honda Accord remains in top condition.

Overview of the Exhaust System

The exhaust system in the 2005 Honda Accord is designed to collect and expel gases produced during the combustion process. It consists of several key components that work together to ensure the vehicle runs efficiently while minimizing harmful emissions. The exhaust system not only helps in reducing noise but also enhances engine performance.

Key Components of the Exhaust System

1. Exhaust Manifold:

- The exhaust manifold collects exhaust gases from the engine cylinders and directs them to the exhaust pipe. It is typically made of cast iron or stainless steel to withstand high temperatures.

2. Catalytic Converter:

- This component converts harmful gases such as carbon monoxide, hydrocarbons, and nitrogen oxides into less harmful substances before they exit the exhaust system. It is vital for meeting emissions regulations.

3. Oxygen Sensors:

- The 2005 Honda Accord is equipped with oxygen sensors located before and after the catalytic converter. These sensors monitor the oxygen levels in the exhaust gases and help the engine control unit (ECU) adjust the air-fuel mixture for optimal combustion.

4. Resonator:

- The resonator reduces noise and can also enhance the exhaust sound. It is not always present in every exhaust system.

5. Muffler:

- The muffler is critical for noise reduction. It dampens the sound created by the engine's exhaust gases as they exit the vehicle.

6. Exhaust Pipes:

- These pipes connect the various components of the exhaust system, allowing exhaust gases to flow from the engine to the outside of the vehicle.

7. Tailpipe:

- The tailpipe is the final section of the exhaust system. It directs the exhaust gases away from the vehicle and into the atmosphere.

Understanding the Diagram

The 2005 Honda Accord exhaust system diagram provides a visual representation of how these components are arranged and connected. A typical diagram will illustrate the following:

- Flow Direction: Arrows indicating the direction of exhaust gas flow from the engine to the tailpipe.
- Component Labels: Each part is labeled, including the manifold, catalytic converter, oxygen sensors, resonator, muffler, and tailpipe.
- Connection Points: The diagram shows how each component is connected via pipes and flanges, which are crucial for maintaining a sealed system.

Understanding this diagram is essential for anyone looking to troubleshoot exhaust issues, perform repairs, or upgrade components.

How the Exhaust System Works

The exhaust system in the 2005 Honda Accord operates through a series of steps:

1. Collection of Gases: When the engine runs, exhaust gases are produced in the combustion chamber. These gases are collected by the exhaust manifold.

2. **Initial Filtration:** The gases flow through the catalytic converter, where harmful substances are converted into less harmful emissions through a chemical reaction.
3. **Monitoring:** Oxygen sensors continuously monitor the composition of the exhaust gases. The data collected is sent to the ECU, which adjusts the air-fuel mixture for efficient combustion.
4. **Sound Reduction:** After passing through the catalytic converter, the gases travel to the resonator and then to the muffler, where noise is reduced.
5. **Exhaust Gas Expulsion:** Finally, the treated gases exit the vehicle through the tailpipe, releasing them into the atmosphere.

Common Issues with the Exhaust System

While the exhaust system is designed to be durable, it can experience various problems over time. Some of the common issues include:

1. **Leaks:**
 - Exhaust leaks can occur at joints or due to rust. This can lead to a decrease in performance and increased emissions.
2. **Clogs:**
 - A clogged catalytic converter can lead to a significant drop in engine performance and can cause the check engine light to illuminate.
3. **Faulty Oxygen Sensors:**
 - Malfunctioning oxygen sensors can disrupt the air-fuel mixture, leading to poor fuel economy and increased emissions.
4. **Corrosion:**
 - Over time, components of the exhaust system can corrode, especially in regions with harsh weather conditions or where roads are salted.
5. **Noise Issues:**
 - Unusual noises may indicate a problem with the muffler, resonator, or other components of the exhaust system.

Maintenance Tips for the Exhaust System

Regular maintenance of the exhaust system is crucial to ensure it operates efficiently. Here are some tips:

1. **Regular Inspections:**
 - Periodically check the exhaust system for any visible signs of leaks or

damage. Look for rust, holes, or loose connections.

2. Oxygen Sensor Replacement:

- Replace oxygen sensors as recommended in the owner's manual or when you notice a decrease in fuel economy.

3. Catalytic Converter Care:

- Use high-quality fuel and avoid running the engine when it is misfiring to prevent damage to the catalytic converter.

4. Muffler and Resonator Checks:

- Listen for unusual noises that may indicate a problem with the muffler or resonator. Promptly address any issues to avoid further damage.

5. Professional Servicing:

- If you suspect any issues with the exhaust system, seek professional help for diagnostics and repairs.

Replacement Parts and Upgrades

If any components of the exhaust system need replacement, several options are available:

1. OEM Parts:

- Original Equipment Manufacturer (OEM) parts provide an exact fit and follow factory specifications.

2. Aftermarket Parts:

- Aftermarket components can offer performance enhancements, such as better flow characteristics or reduced weight.

3. Custom Exhaust Systems:

- For those looking to enhance performance or sound, custom exhaust systems can be an option. These systems can be tailored to meet specific preferences.

4. Installation:

- Whether you choose OEM or aftermarket parts, consider professional installation to ensure proper fitting and function.

Conclusion

The 2005 Honda Accord exhaust system diagram is more than just a visual representation; it is a critical tool for understanding how the exhaust system functions and how to maintain it. By familiarizing yourself with the components and their roles, you can better identify issues and ensure your vehicle runs smoothly. Regular maintenance, timely repairs, and appropriate

upgrades can prolong the life of the exhaust system, enhance performance, and keep your Honda Accord compliant with emissions regulations. Whether you're a DIY enthusiast or prefer professional help, keeping your exhaust system in top shape is essential for overall vehicle health.

Frequently Asked Questions

What are the main components of the 2005 Honda Accord exhaust system?

The main components of the 2005 Honda Accord exhaust system include the exhaust manifold, catalytic converter, resonator, muffler, and exhaust pipes.

Where can I find a detailed exhaust system diagram for a 2005 Honda Accord?

A detailed exhaust system diagram for a 2005 Honda Accord can typically be found in the vehicle's service manual, online automotive forums, or websites that specialize in repair diagrams.

How do I interpret the exhaust system diagram for my 2005 Honda Accord?

To interpret the exhaust system diagram, identify each component's location, understand the flow of exhaust gases through the system, and refer to labels and lines that indicate connections and measurements.

What common issues can arise in the 2005 Honda Accord exhaust system?

Common issues in the 2005 Honda Accord exhaust system include exhaust leaks, rusted or damaged pipes, a failing catalytic converter, and muffler deterioration.

Can I upgrade the exhaust system on my 2005 Honda Accord, and what are the benefits?

Yes, you can upgrade the exhaust system on your 2005 Honda Accord. Benefits may include improved engine performance, enhanced sound, and a more aggressive appearance.

Find other PDF article:

<https://soc.up.edu.ph/20-pitch/files?docid=gcg19-1492&title=epic-ambulatory-certification-exam-questions.pdf>

2005 Honda Accord Exhaust System Diagram

-

PDF GENERATED BY PDF24.COM

[illegible]

08 ...

0000000000000000pdf000000 - 00

[illegible]

□□□□**2005**□□□□□□ - □□

□□□2005□□□□ □□□□2005□□□□□□□□□□□□□□□□□□□6□□□□□□□□ ...

□□□□□□□□□□ - □□

[illegible]

-

PDF
2020
1946-2021

□□□□□□□□□□□□□□□□? - □□

08

1

000000000000000000pdf00000000 - 00

[illegible]

□□□□**2005**□□□□□□ - □□

[illegible]

□□□□□□□□□□ - □□

00000000000000000000 000000000000000000000000000000000000 00000000 0000 0 0000 000000000000
 000 0 ...

□□□□□□□□□□□□□□□□ - □□

□□□□ 2005□□□□□□□□13□□□□□□□□□□□□ □□□□□□□□□□13□□□□□□□□□□□□ □□□□□□□□□□13□□□□□□□□□□
□□ 2008□□□□□□□□13□□□□□□□□□□□□ □□□□□□□□□□□□□□

□□□□□□□□□□□□□□□□ - □□

[illegible]

endnote [] {#} [] - []

`##### endnote#### word###1##### 1####2## #####2####`

`#endnote##### 2#endnote##### ..`

□□□□□□□□□□□□ - □□

Utility Patents	(Patent Applications)	Design Patents	Plant
1,234,567	567,890	90,123	45,678
2,345,678	678,901	101,234	56,789
3,456,789	789,012	112,345	67,890
4,567,890	890,123	123,456	78,901
5,678,901	901,234	134,567	89,012
6,789,012	1,012,345	145,678	90,123
7,890,123	1,123,456	156,789	101,234
8,901,234	1,234,567	167,890	112,345
9,012,345	1,345,678	178,901	123,456
10,123,456	1,456,789	189,012	134,567
11,234,567	1,567,890	190,123	145,678
12,345,678	1,678,901	201,234	156,789
13,456,789	1,789,012	212,345	167,890
14,567,890	1,890,123	223,456	178,901
15,678,901	1,901,234	234,567	189,012
16,789,012	2,012,345	245,678	190,123
17,890,123	2,123,456	256,789	201,234
18,901,234	2,234,567	267,890	212,345
19,012,345	2,345,678	278,901	223,456
20,123,456	2,456,789	289,012	234,567
21,234,567	2,567,890	290,123	245,678
22,345,678	2,678,901	301,234	256,789
23,456,789	2,789,012	312,345	267,890
24,567,890	2,890,123	323,456	278,901
25,678,901	2,901,234	334,567	289,012
26,789,012	3,012,345	345,678	290,123
27,890,123	3,123,456	356,789	301,234
28,901,234	3,234,567	367,890	312,345
29,012,345	3,345,678	378,901	323,456
30,123,456	3,456,789	389,012	334,567
31,234,567	3,567,890	390,123	345,678
32,345,678	3,678,901	401,234	356,789
33,456,789	3,789,012	412,345	367,890
34,567,890	3,890,123	423,456	378,901
35,678,901	3,901,234	434,567	389,012
36,789,012	4,012,345	445,678	390,123
37,890,123	4,123,456	456,789	401,234
38,901,234	4,234,567	467,890	412,345
39,012,345	4,345,678	478,901	423,456
40,123,456	4,456,789	489,012	434,567
41,234,567	4,567,890	490,123	445,678
42,345,678	4,678,901	501,234	456,789
43,456,789	4,789,012	512,345	467,890
44,567,890	4,890,123	523,456	478,901
45,678,901	4,901,234	534,567	489,012
46,789,012	5,012,345	545,678	490,123
47,890,123	5,123,456	556,789	501,234
48,901,234	5,234,567	567,890	512,345
49,012,345	5,345,678	578,901	523,456
50,123,456	5,456,789	589,012	534,567
51,234,567	5,567,890	590,123	545,678
52,345,678	5,678,901	601,234	556,789
53,456,789	5,789,012	612,345	567,890
54,567,890	5,890,123	623,456	578,901
55,678,901	5,901,234	634,567	589,012
56,789,012	6,012,345	645,678	590,123
57,890,123	6,123,456	656,789	601,234
58,901,234	6,234,567	667,890	612,345
59,012,345	6,345,678	678,901	623,456
60,123,456	6,456,789	689,012	634,567
61,234,567	6,567,890	690,123	645,678
62,345,678	6,678,901	701,234	656,789
63,456,789	6,789,012	712,345	667,890
64,567,890	6,890,123		

Patent 〇〇〇〇 Reexamination Certificate 〇〇〇〇 (B) Reissue Patent 〇〇〇〇〇〇〇〇 (Re) Defensive Publication 〇〇〇〇 (T) 1985 〇〇〇 Statutory Invention Registration 〇SIR〇〇〇〇〇〇〇〇 ...

[illegible]

2005 12 8

Explore the detailed 2005 Honda Accord exhaust system diagram. Understand components and layout for easy repairs. Learn more for effective maintenance tips!

[Back to Home](#)