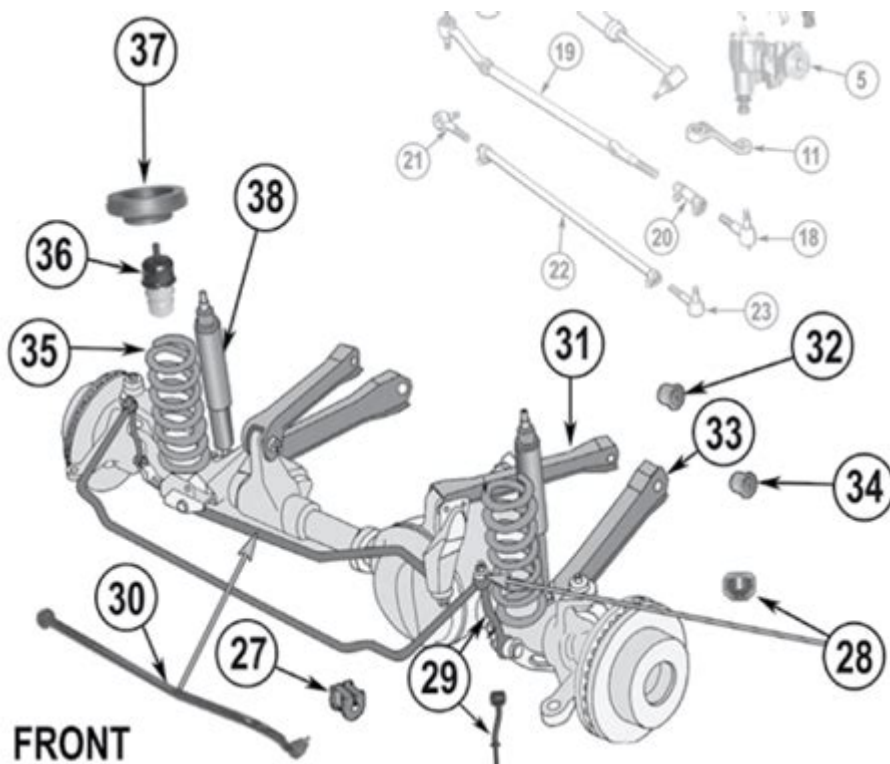


2004 Jeep Grand Cherokee Front Suspension Diagram



2004 Jeep Grand Cherokee front suspension diagram is an essential resource for Jeep owners and mechanics alike. Understanding the layout of the front suspension system not only aids in maintenance and repairs but also enhances the overall performance of the vehicle. This article delves into the intricacies of the 2004 Jeep Grand Cherokee's front suspension, providing a detailed overview of its components, functionality, and common issues.

Understanding the Front Suspension System

The front suspension system of a vehicle plays a crucial role in ensuring a smooth ride, stability, and steering control. It consists of several key components that work together to absorb shocks from the road, maintain tire contact, and support the vehicle's weight.

Key Components of the Front Suspension

The 2004 Jeep Grand Cherokee features a sophisticated front suspension system that includes the following components:

- **Control Arms:** These are pivotal in connecting the wheel hub to the vehicle's frame. The upper and lower control arms allow for vertical wheel movement while maintaining lateral stability.

- **Ball Joints:** These are spherical bearings that connect the control arms to the steering knuckle, allowing for smooth movement and a range of motion as the suspension moves.
- **Steering Knuckle:** This component houses the wheel hub and connects the suspension components to the steering system, allowing for precise steering control.
- **Shock Absorbers:** These components dampen the effects of bumps and road imperfections, providing a comfortable ride by controlling the impact of vibrations.
- **Coil Springs:** These springs support the vehicle's weight and absorb shocks, working in tandem with the shock absorbers to enhance ride quality.
- **Stabilizer Bar (Anti-Roll Bar):** This component reduces body roll during cornering and enhances stability by linking the left and right sides of the suspension.

Functionality of the Front Suspension

The front suspension system of the 2004 Jeep Grand Cherokee is designed to perform several important functions:

1. Shock Absorption

The combination of coil springs and shock absorbers ensures that the vehicle can absorb shocks from uneven surfaces, providing a smooth and comfortable ride.

2. Steering Control

The steering knuckle and ball joints allow the front wheels to pivot, giving the driver precise control over the vehicle's direction.

3. Weight Distribution

The suspension system supports the weight of the vehicle and distributes it evenly across the tires, enhancing traction and stability.

4. Alignment Maintenance

Proper alignment of the suspension components is crucial for tire wear and handling. The control arms and ball joints ensure that the wheels remain aligned during operation.

Common Issues with the Front Suspension

Over time, the front suspension components of the 2004 Jeep Grand Cherokee may experience wear and tear, leading to various issues. Here are some common problems owners may encounter:

1. Worn Ball Joints

Ball joints can wear out due to constant movement and stress, resulting in clunking noises and loose steering. Regular inspection is necessary to identify any signs of wear.

2. Damaged Control Arms

Control arms can bend or break due to severe impacts or corrosion. Damage to these components can lead to misalignment and compromised handling.

3. Leaking Shock Absorbers

If the shock absorbers begin to leak fluid, they can lose their ability to dampen shocks effectively, resulting in a rough ride and decreased stability.

4. Broken Coil Springs

Coil springs can weaken or break over time, causing the vehicle to sag and potentially leading to bottoming out on rough terrain.

5. Faulty Stabilizer Bar Links

Worn stabilizer bar links can lead to increased body roll and poor handling, especially during cornering.

Maintenance Tips for the Front Suspension

To ensure the longevity and performance of the front suspension system in your 2004 Jeep Grand Cherokee, regular maintenance is essential. Here are some tips to keep in mind:

1. **Regular Inspections:** Schedule inspections of the suspension components every 30,000 miles or as recommended in the owner's manual.
2. **Listen for Noises:** Pay attention to any unusual noises while driving, such as clunking or rattling, as these can indicate worn components.
3. **Check for Leaks:** Regularly inspect the shock absorbers for signs of fluid leaks, which could

indicate a failure.

4. **Monitor Tire Wear:** Uneven tire wear can be a sign of suspension issues. Check your tires regularly and address any alignment concerns promptly.
5. **Replace Worn Components:** If you notice any signs of wear or damage, replace the affected components as soon as possible to prevent further issues.

Conclusion

The **2004 Jeep Grand Cherokee front suspension diagram** is a vital tool for understanding the intricate system that keeps your vehicle stable and comfortable on the road. By familiarizing yourself with the key components, their functions, and potential issues, you can better maintain your Jeep and ensure a smooth driving experience. Regular inspections and proper maintenance are crucial to extending the life of your front suspension system, so make it a priority to keep your suspension in top shape. Whether you're a DIY enthusiast or a professional mechanic, having a comprehensive understanding of your vehicle's front suspension can significantly enhance your driving experience.

Frequently Asked Questions

What is the purpose of the front suspension in a 2004 Jeep Grand Cherokee?

The front suspension in a 2004 Jeep Grand Cherokee is designed to support the vehicle's weight, provide stability during driving, absorb shocks from the road, and maintain proper alignment of the wheels for optimal handling.

Where can I find a detailed front suspension diagram for a 2004 Jeep Grand Cherokee?

A detailed front suspension diagram for a 2004 Jeep Grand Cherokee can usually be found in the vehicle's service manual, online forums dedicated to Jeep enthusiasts, or automotive repair websites.

What are the key components of the front suspension system in a 2004 Jeep Grand Cherokee?

The key components of the front suspension system in a 2004 Jeep Grand Cherokee include control arms, struts, sway bars, ball joints, and the steering knuckle.

How can I troubleshoot front suspension issues in a 2004 Jeep Grand Cherokee?

To troubleshoot front suspension issues, inspect for any signs of wear or damage on components like struts and control arms, listen for unusual noises when driving, and check for uneven tire wear.

What tools are needed to work on the front suspension of a 2004 Jeep Grand Cherokee?

Common tools needed include a jack and jack stands, socket set, wrenches, a torque wrench, and possibly a ball joint separator or spring compressor for specific repairs.

What are common problems associated with the front suspension of a 2004 Jeep Grand Cherokee?

Common problems can include worn-out struts, damaged control arms, loose or worn ball joints, and issues with the sway bar links, leading to poor handling and a rough ride.

Is it possible to upgrade the front suspension on a 2004 Jeep Grand Cherokee?

Yes, it is possible to upgrade the front suspension on a 2004 Jeep Grand Cherokee with performance parts such as heavy-duty struts, upgraded control arms, or lift kits for improved off-road capability.

How often should the front suspension be inspected on a 2004 Jeep Grand Cherokee?

It is recommended to inspect the front suspension at least once a year or whenever there are noticeable handling issues, unusual noises, or after driving on rough terrain.

Can I replace the front suspension components myself on a 2004 Jeep Grand Cherokee?

If you have the right tools and mechanical knowledge, you can replace front suspension components yourself. However, if you're unsure, it's best to consult a professional mechanic.

Find other PDF article:

<https://soc.up.edu.ph/61-page/pdf?docid=sXE79-2537&title=the-ritual-adam-nevill.pdf>

2004 Jeep Grand Cherokee Front Suspension Diagram

□□□□□□□□□□□□□□□□□□□□ - □□

PDF 2020 1946-2021

08□□□□□□□□□□□□□□□□? - □□

PC+ Win98 ...

□□□□□□□□□□□□ - □□

Microsoft Excel 97-2004 worksheet - Microsoft Community
Feb 3, 2018 · i'm trying to open Microsoft Excel 97-2004 worksheet on my Apple ipad Air2 what do i have to do Please.

win10 2004? - 08
Mar 30, 2020 · win10 2004? - 08

endnote {#} - 08
endnote {#} - 08

22H2 Win10 - 08
IT 4 28 22H2 Win10 - 08

2025 7 CPU 9 9950X3D - 08
Jun 30, 2025 · 2025 7 CPU 9 9950X3D - 08

08? - 08
08? - 08

win10 2004? - 08
Mar 30, 2020 · win10 2004? - 08

Microsoft Excel 97-2004 worksheet - Microsoft Community
Feb 3, 2018 · i'm trying to open Microsoft Excel 97-2004 worksheet on my Apple ipad Air2 what do i have to do Please.

08? - 08
08? - 08

08? - 08
08? - 08

08? - 08
08? - 08

pdf - 08
pdf - 08

endnote {#} - 08
endnote {#} - 08

22H2 Win10 - 08
IT 4 28 22H2 Win10 - 08

2025 7 CPU 9 9950X3D - 08

Jun 30, 2025 · CPU CPU

? -

08 ...

win102004? -

Mar 30, 2020 · win10“win+i” “Windows” ...

Microsoft Excel 97-2004 worksheet - Microsoft Community

Feb 3, 2018 · i'm trying to open Microsoft Excel 97-2004 worksheet on my Apple ipad Air2 what do i have to do Please.

Explore the 2004 Jeep Grand Cherokee front suspension diagram for detailed insights on parts and maintenance. Learn more to enhance your vehicle's performance!

[Back to Home](#)