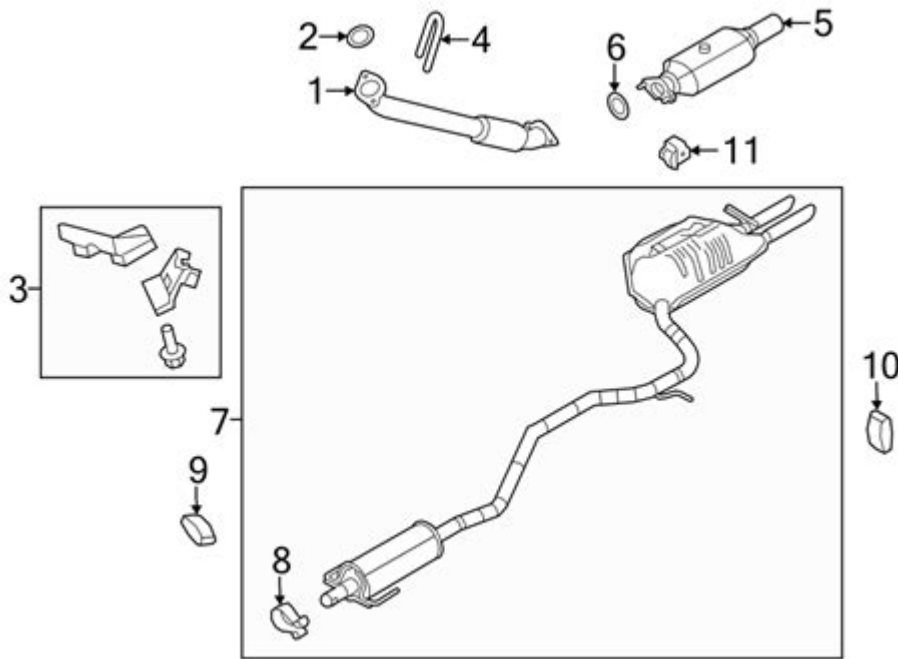


2012 Ford Fusion Exhaust Diagram



2012 Ford Fusion exhaust diagram is an essential resource for any car enthusiast or mechanic looking to understand the intricacies of the exhaust system in this particular model. The exhaust system in a vehicle plays a crucial role in reducing emissions, improving fuel efficiency, and enhancing overall engine performance. In this article, we will delve into the details of the exhaust system of the 2012 Ford Fusion, including its components, functions, and a comprehensive diagram to assist you in visualizing the layout.

Understanding the Exhaust System

The exhaust system is a vital component of any vehicle, including the 2012 Ford Fusion. It is designed to:

- Direct harmful gases away from the engine and passenger compartment.
- Reduce harmful emissions that can contribute to air pollution.
- Minimize engine noise.
- Improve engine performance by maintaining optimal back pressure.

Key Components of the Exhaust System

The exhaust system of the 2012 Ford Fusion comprises several critical components. Understanding these components will help you appreciate how they work together to ensure your vehicle operates efficiently.

1. **Exhaust Manifold:** This is the first component of the exhaust system. It collects exhaust gases from the engine cylinders and directs them into the exhaust pipe.
2. **Oxygen Sensors:** Located in the exhaust system, these sensors monitor the amount of oxygen in the exhaust gases to help the engine control module (ECM) optimize fuel-air mixture.
3. **Catalytic Converter:** This device converts harmful gases, such as carbon monoxide and hydrocarbons, into less harmful emissions before they exit the tailpipe.
4. **Resonator:** The resonator reduces noise in the exhaust system and can enhance the sound of the engine.
5. **Muffler:** This component is responsible for silencing the noise produced by the exhaust gases as they exit the vehicle.
6. **Exhaust Pipes:** These pipes transport exhaust gases from the engine to the tailpipe.
7. **Tailpipe:** The final section of the exhaust system, the tailpipe directs exhaust gases away from the vehicle.

The 2012 Ford Fusion Exhaust Diagram

The exhaust diagram for the 2012 Ford Fusion provides a visual representation of how these components are arranged and connected. Here is a simplified breakdown of the exhaust system layout:

- **Exhaust Manifold:** Positioned at the engine, it collects gases from each cylinder.
- **Oxygen Sensors:** Typically located before and after the catalytic converter to monitor the effectiveness of the converter.
- **Catalytic Converter:** Situated downstream of the exhaust manifold, it plays a key role in reducing harmful emissions.
- **Resonator:** Found between the catalytic converter and the muffler, it aids in noise reduction.
- **Muffler:** Located further down the exhaust line, it minimizes noise before exhaust gases exit through the tailpipe.
- **Tailpipe:** The final exit point for exhaust gases, which directs them away from the vehicle.

Visualizing the Exhaust System

While a textual explanation is valuable, having a visual representation can greatly enhance understanding. Below is a simplified illustration of the exhaust system layout for the 2012 Ford Fusion:

...

[Engine] --> [Exhaust Manifold] --> [Oxygen Sensor 1] --> [Catalytic Converter] --> [Oxygen Sensor 2] --> [Resonator] --> [Muffler] --> [Tailpipe]

...

This diagram gives you a clear view of how the exhaust components are interconnected, allowing for efficient gas flow and emission control.

Importance of Regular Exhaust System Maintenance

Maintaining the exhaust system of your 2012 Ford Fusion is crucial for several reasons:

- Performance Enhancement: A well-maintained exhaust system ensures optimal engine performance by allowing exhaust gases to flow freely.
- Fuel Efficiency: A clogged or damaged exhaust system can lead to decreased fuel efficiency as the engine works harder to expel gases.
- Emissions Control: Regular checks ensure that the catalytic converter and other components are functioning correctly, helping to reduce harmful emissions.
- Noise Reduction: A malfunctioning muffler or resonator can lead to increased noise levels, which can be bothersome and may indicate underlying issues.

Signs of Exhaust System Problems

Being aware of the symptoms of exhaust system issues can help you address problems before they escalate. Common signs include:

- Loud Noises: Excessive noise while driving may indicate a damaged muffler or exhaust leak.
- Reduced Fuel Efficiency: A sudden drop in fuel efficiency can signal a problem within the exhaust system.
- Vibrations: Unusual vibrations or rattling sounds may suggest loose components or damage.
- Strong Odors: A strong smell of exhaust fumes inside the cabin could indicate a leak that needs immediate attention.

DIY Maintenance Tips for the 2012 Ford Fusion Exhaust System

For those interested in maintaining their vehicle, here are some DIY tips for checking and maintaining the exhaust system:

1. **Visual Inspection:** Regularly inspect the exhaust system for signs of rust, corrosion, or damage. Pay special attention to the joints and connections.
2. **Check for Leaks:** Listen for any hissing or popping sounds that may indicate a leak. You can also use soapy water to check for bubbles around joints.
3. **Inspect Oxygen Sensors:** Ensure that the oxygen sensors are clean and functioning properly. This may require professional diagnostics if you suspect issues.
4. **Muffler and Tailpipe Check:** Examine the muffler and tailpipe for dents or damage. Replace them if necessary to maintain proper function and sound.
5. **Professional Service:** If you notice any significant issues or are unsure about your findings, consult a professional mechanic for a thorough inspection.

Conclusion

In summary, the **2012 Ford Fusion exhaust diagram** serves as a valuable guide for understanding the exhaust system's components and their functions. Regular maintenance is vital to ensure the system operates efficiently, contributing to better performance, fuel efficiency, and reduced emissions. By recognizing the signs of exhaust system problems and employing basic maintenance techniques, you can keep your 2012 Ford Fusion running smoothly for years to come. Whether you're a DIY enthusiast or prefer professional help, knowing the layout and function of your exhaust system is crucial for vehicle care.

Frequently Asked Questions

What is the purpose of the exhaust system in a 2012 Ford Fusion?

The exhaust system in a 2012 Ford Fusion is designed to direct exhaust gases away from the engine, reduce harmful emissions, and minimize noise produced by the engine.

Where can I find a detailed exhaust diagram for a 2012 Ford Fusion?

A detailed exhaust diagram for a 2012 Ford Fusion can typically be found in the vehicle's service manual, online automotive forums, or websites specializing in Ford parts.

What are common issues associated with the exhaust system in a 2012 Ford Fusion?

Common issues include exhaust leaks, rusted or damaged components, catalytic converter failure, and problems with the muffler leading to increased noise or poor engine performance.

How can I identify a problem in the exhaust system of my 2012 Ford Fusion?

Signs of a problem in the exhaust system may include unusual noises, a decrease in fuel efficiency, a check engine light, or the smell of exhaust gases inside the cabin.

What components are included in the exhaust system of a 2012 Ford Fusion?

The exhaust system of a 2012 Ford Fusion typically includes the exhaust manifold, catalytic converter, resonator, muffler, and exhaust pipes.

Is it possible to modify the exhaust system of a 2012 Ford Fusion?

Yes, it is possible to modify the exhaust system of a 2012 Ford Fusion with aftermarket parts, but it's important to ensure modifications comply with local emissions regulations.

Find other PDF article:

<https://soc.up.edu.ph/63-zoom/pdf?docid=TXP80-9352&title=trigonometry-pile-up-answer-key.pdf>

2012 Ford Fusion Exhaust Diagram

□□2012□□□□□□□□□□ - □□

[illegible]

2012

2012 年 1 月 1 日 至 2012 年 12 月 31 日止 ...

□□□□□□□□ IP □□□ - □□

```
ipconfig /flushdns windows "cmd" windows Power shell ipconfig ...
```

□□□□□□□□□□ - □□

...

□□□□**CAD**□□□□ - □□

Oct 10, 2023 · cad2004 2007 2012 cad2000 +3d, cad2012-2014 (win7 3d) inventor, cad2016 (win10) ...

ipad , **iPad** **iPad**

Oct 20, 2024 · iPad 4 2012 A6X Lightning iPad2017 A9 9.7 Air ...

PDF2020-1946-2021 ...

endnote word1 2 endnote ...

2012-2022 2012 13 ...

Excel 2. Excel “” -> “” ...

2012 2012 ### 2009 2012 ...

2012 ... 2012 2012 ...

IP windows cmd windows Power shell ipconfig IP ios wifi “IP ...

2012 ...

CAD Oct 10, 2023 · cad2004 2007 2012 cad2000 3d, cad2012-2014 (win7 3d) inventor, cad2016 (win10) (cad 3d viewbase inventor server ...

ipad,iPad iPad Oct 20, 2024 · iPad 4 2012 A6X Lightning iPad2017 A9 9.7 Air ...

PDF2020-1946-2021 ...

endnote word1 2 endnote ...

2012-2022 -

2012 13

Excel -

2. Excel " " -> " " " " " " ...

Explore our detailed 2012 Ford Fusion exhaust diagram to understand the system's layout and components. Discover how to enhance your vehicle's performance today!

[Back to Home](#)