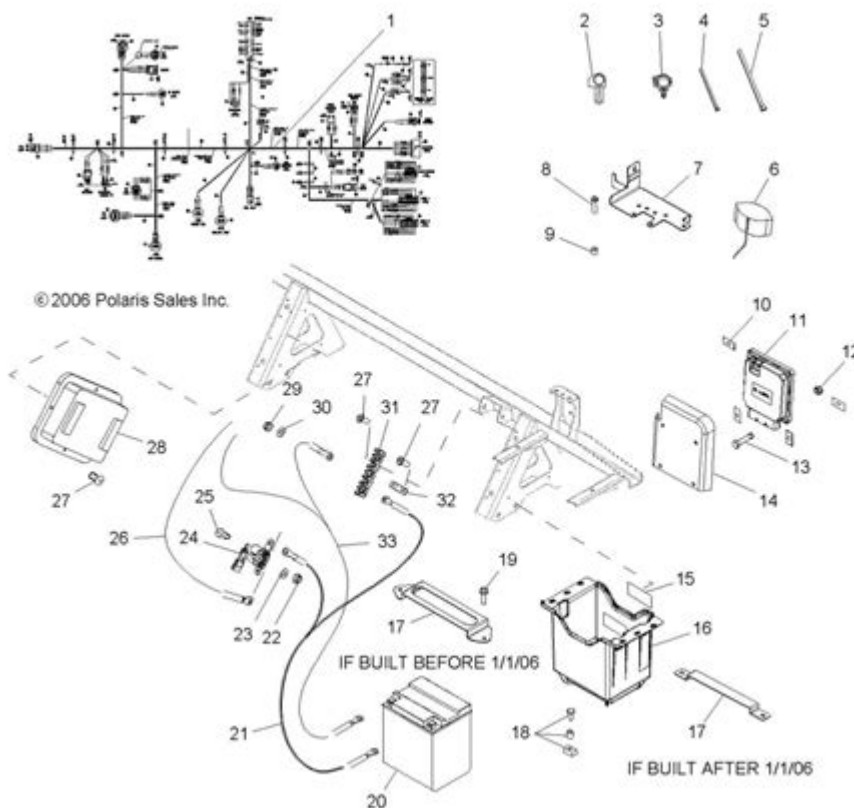


2007 Polaris Ranger 700 Xp Parts Diagram



2007 Polaris Ranger 700 XP Parts Diagram

The 2007 Polaris Ranger 700 XP is a versatile all-terrain vehicle that has gained a reputation for its durability and performance. Understanding the parts and components of this UTV is crucial for maintenance, repairs, and upgrades. A parts diagram serves as a valuable reference for anyone looking to work on their Ranger, providing insights into the organization and functionality of its various systems. This article delves into the specifics of the 2007 Polaris Ranger 700 XP parts diagram, exploring its components, their functions, and where to find replacement parts.

Overview of the Polaris Ranger 700 XP

The Polaris Ranger 700 XP is part of the Ranger series, known for its robust design and powerful performance in off-road conditions. The "XP" stands for "Xtreme Performance," highlighting the vehicle's capability to tackle rough terrain while offering a smooth ride. The 700 XP model is equipped with a powerful 700cc engine, ample cargo space, and advanced suspension systems, making it a popular choice for both recreational and work-related tasks.

Key Specifications

Before diving into the parts diagram, it's essential to understand some of the key specifications of the 2007 Polaris Ranger 700 XP:

- Engine Type: 700cc, liquid-cooled, SOHC, 4-stroke, single-cylinder
- Power Output: Approximately 50 horsepower
- Transmission: Automatic PVT (Polaris Variable Transmission) with high/low range and reverse
- Towing Capacity: Up to 1,500 lbs
- Payload Capacity: Up to 1,000 lbs in the cargo box
- Ground Clearance: 11 inches
- Wheelbase: 79 inches

Understanding the Parts Diagram

A parts diagram for the 2007 Polaris Ranger 700 XP typically includes detailed illustrations of various components, indicating their placement and connection to other parts. Here's how the diagram is usually organized:

- Engine Components
- Transmission and Drivetrain
- Suspension and Steering
- Braking System
- Electrical Components
- Body and Frame Parts

Each section of the parts diagram provides both a visual representation and a corresponding part number, which is crucial for ordering replacements.

Engine Components

The engine is the heart of the Polaris Ranger 700 XP, and understanding its components is vital for maintenance and repairs. Key parts include:

- Cylinder Head
- Piston and Rings
- Crankshaft
- Camshaft
- Valves and Springs
- Fuel Injectors

In the parts diagram, these components are often labeled, allowing users to identify specific parts that may need attention or replacement.

Transmission and Drivetrain

The transmission and drivetrain are responsible for transferring power from the engine to the wheels. Important parts include:

- Transmission Housing
- Clutch Assembly
- Drive Belt
- Differential
- Axles

Understanding how these components work together helps in diagnosing issues related to acceleration and power delivery.

Suspension and Steering

The suspension system plays a critical role in providing a smooth ride, especially on uneven terrain. Key components include:

- Shock Absorbers
- A-Arms
- Bushings
- Steering Rack
- Tie Rods

A well-maintained suspension system enhances handling and stability, making it essential to keep these parts in good condition.

Braking System

The braking system is crucial for safety and control. Components typically illustrated in the parts diagram include:

- Brake Calipers
- Brake Pads
- Rotors
- Master Cylinder
- Brake Lines

Regular checks and replacements of these components are essential for maintaining optimal braking performance.

Electrical Components

The electrical system powers various features and controls on the Ranger. Key parts include:

- Battery
- Starter Motor
- Ignition Coil
- Wiring Harness
- Fuses and Relays

Understanding the electrical layout can help in troubleshooting issues related to starting or electrical accessories.

Body and Frame Parts

The body and frame of the Ranger provide structural integrity and protection for the rider. Important components include:

- Chassis Frame
- Body Panels
- Bumpers
- Cargo Box
- Windshield

Keeping these parts intact not only enhances the vehicle's appearance but also its functionality.

Finding Replacement Parts

When it comes to finding replacement parts for the 2007 Polaris Ranger 700 XP, there are several avenues to explore:

Authorized Dealers

- Polaris Dealerships: The best source for OEM (Original Equipment Manufacturer) parts. They provide genuine parts that ensure compatibility and reliability.

Online Retailers

- Websites: Many online retailers specialize in UTV parts, offering both OEM and aftermarket options. Some popular sites include:

- Amazon
- eBay
- PartsTree
- BikeBandit

Local Auto Parts Stores

- Automotive Stores: Many local stores stock common parts for UTVs, including batteries, filters, and fluids.

Common Maintenance Tips

To keep your 2007 Polaris Ranger 700 XP running smoothly, regular maintenance is essential. Here are some tips:

- Regular Oil Changes: Change the oil every 50 hours or as recommended in the owner's manual.
- Air Filter Maintenance: Clean or replace the air filter regularly to ensure optimal engine performance.
- Check Tire Pressure: Maintain the recommended tire pressure for better handling and fuel efficiency.
- Inspect Brake System: Regularly check brake pads and fluid levels for safety.
- Battery Care: Keep the battery terminals clean and check the charge before long rides.

Conclusion

The 2007 Polaris Ranger 700 XP is a robust and reliable vehicle that can tackle various tasks, from recreational riding to heavy-duty work. Understanding the parts diagram is essential for anyone looking to maintain or repair their Ranger. By familiarizing yourself with the various components, sourcing replacement parts, and following proper maintenance practices, you can ensure that your Polaris Ranger remains in top condition for years to come. Whether you're an experienced mechanic or a casual user, having access to a comprehensive parts diagram is an invaluable resource in your UTV ownership journey.

Frequently Asked Questions

What is a parts diagram for a 2007 Polaris Ranger 700 XP?

A parts diagram for the 2007 Polaris Ranger 700 XP is a visual representation that details the different components and their arrangement within the vehicle, helping users identify and order replacement parts.

Where can I find the parts diagram for a 2007 Polaris Ranger 700 XP?

You can find the parts diagram for a 2007 Polaris Ranger 700 XP on the official Polaris website, in the owner's manual, or through authorized Polaris dealers.

What are the common issues that can be identified using the

parts diagram for a 2007 Polaris Ranger 700 XP?

Common issues include electrical failures, engine problems, suspension wear, and drivetrain issues, which can all be diagnosed by referencing the parts diagram.

How do I use the parts diagram to order replacement parts for my 2007 Polaris Ranger 700 XP?

To order replacement parts, locate the specific part on the diagram, note the part number, and then contact a Polaris dealer or online retailer to place your order.

Are there aftermarket parts available for the 2007 Polaris Ranger 700 XP?

Yes, there are many aftermarket parts available for the 2007 Polaris Ranger 700 XP, often providing alternative options for performance upgrades or cost savings.

What should I do if I can't find the parts diagram for my 2007 Polaris Ranger 700 XP?

If you can't find the parts diagram, consider reaching out to a Polaris dealer, checking online forums, or visiting Polaris enthusiast websites for assistance.

Is the parts diagram for the 2007 Polaris Ranger 700 XP the same as for other models?

No, the parts diagram for the 2007 Polaris Ranger 700 XP is specific to that model and may differ significantly from diagrams for other Ranger models.

Can I repair my 2007 Polaris Ranger 700 XP using the parts diagram?

Yes, the parts diagram can help you understand the layout of components, making it easier to perform repairs and maintenance on your vehicle.

What tools do I need to replace parts on my 2007 Polaris Ranger 700 XP using the parts diagram?

You'll typically need basic hand tools such as wrenches, sockets, screwdrivers, and possibly specialized tools depending on the parts you are replacing.

How often should I consult the parts diagram for my 2007 Polaris Ranger 700 XP?

It's a good practice to consult the parts diagram during routine maintenance, repairs, or when troubleshooting any issues with your vehicle.

Find other PDF article:

2007 (2007) -

Apr 10, 2025 · (2007) 16 episodes

The Tudors Season 1 (2007)

May 26, 2025 · The Tudors Season 1 (2007) 16 episodes

2007 13?

2007 13 2 3 4 5 6 7 8 ...

Explore the complete 2007 Polaris Ranger 700 XP parts diagram for easy reference. Discover how to find the right parts for your vehicle today!

[Back to Home](#)